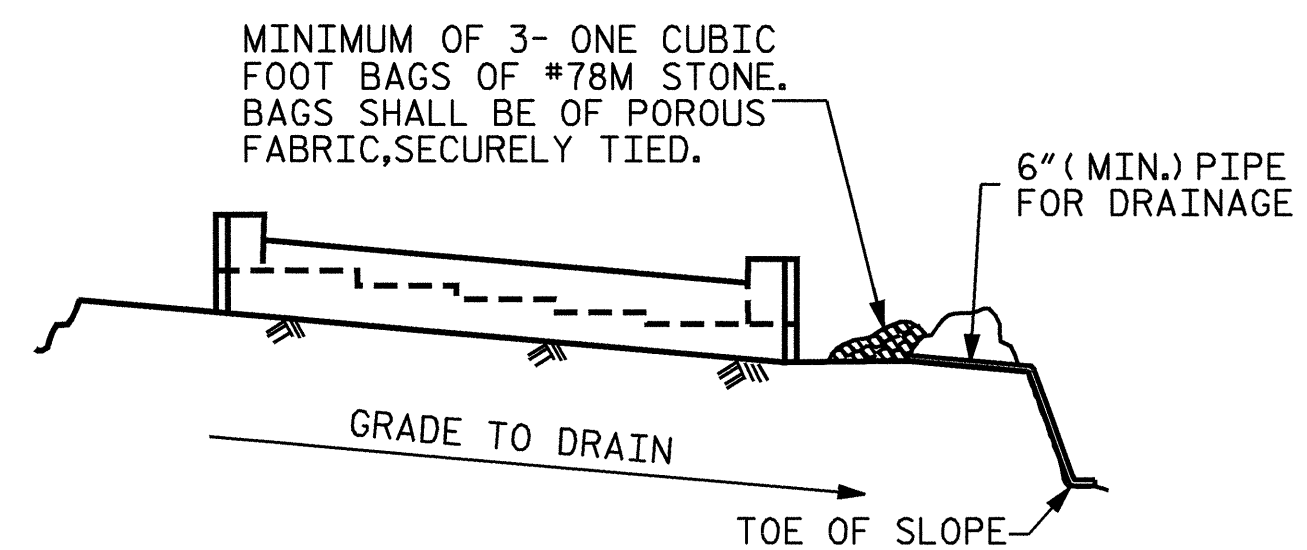


SECTION "A-A"



MINIMUM OF 3- ONE CUBIC FOOT BAGS OF #78M STONE. BAGS SHALL BE OF POROUS FABRIC, SECURELY TIED.

BAGGED STONE AND PIPE SHALL BE PLACED IMMEDIATELY AFTER COMPLETION OF END BENT EXCAVATION. PIPE MAY BE EITHER CONCRETE, CORRUGATED STEEL, CORRUGATED ALUMINUM ALLOY, OR CORRUGATED PLASTIC. PERFORATED PIPE WILL NOT BE ALLOWED.

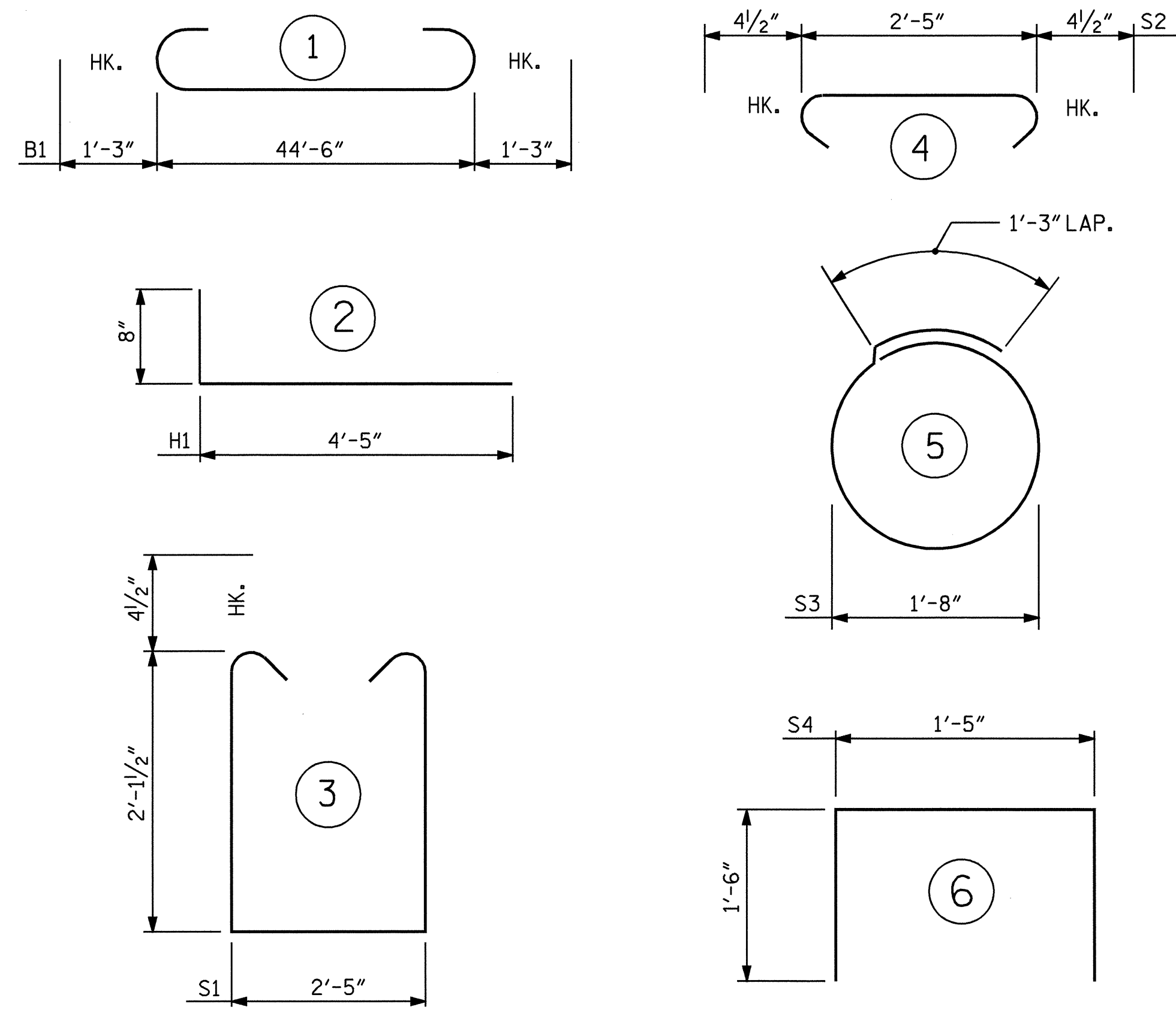
BAGGED STONE SHALL REMAIN IN PLACE UNTIL THE ENGINEER DIRECTS THAT IT BE REMOVED. THE CONTRACTOR SHALL REMOVE AND DISPOSE OF SILT ACCUMULATIONS AT BAGGED STONE WHEN SO DIRECTED BY THE ENGINEER. BAGS SHALL BE REMOVED AND REPLACED WHENEVER THE ENGINEER DETERMINES THAT THEY HAVE DETERIORATED AND LOST THEIR EFFECTIVENESS.

NO SEPARATE PAYMENT WILL BE MADE FOR THIS WORK AND THE ENTIRE COST OF THIS WORK SHALL BE INCLUDED IN THE UNIT CONTRACT PRICE BID FOR THE SEVERAL PAY ITEMS.

**TEMPORARY DRAINAGE AT END BENT**

DRAWN BY : M.G. SHAIKH DATE : 10-21-04  
CHECKED BY : D.A. GLADDEN DATE : 10-26-04

**BAR TYPES**



ALL BAR DIMENSIONS ARE OUT TO OUT.

**BILL OF MATERIAL FOR END BENT #1**

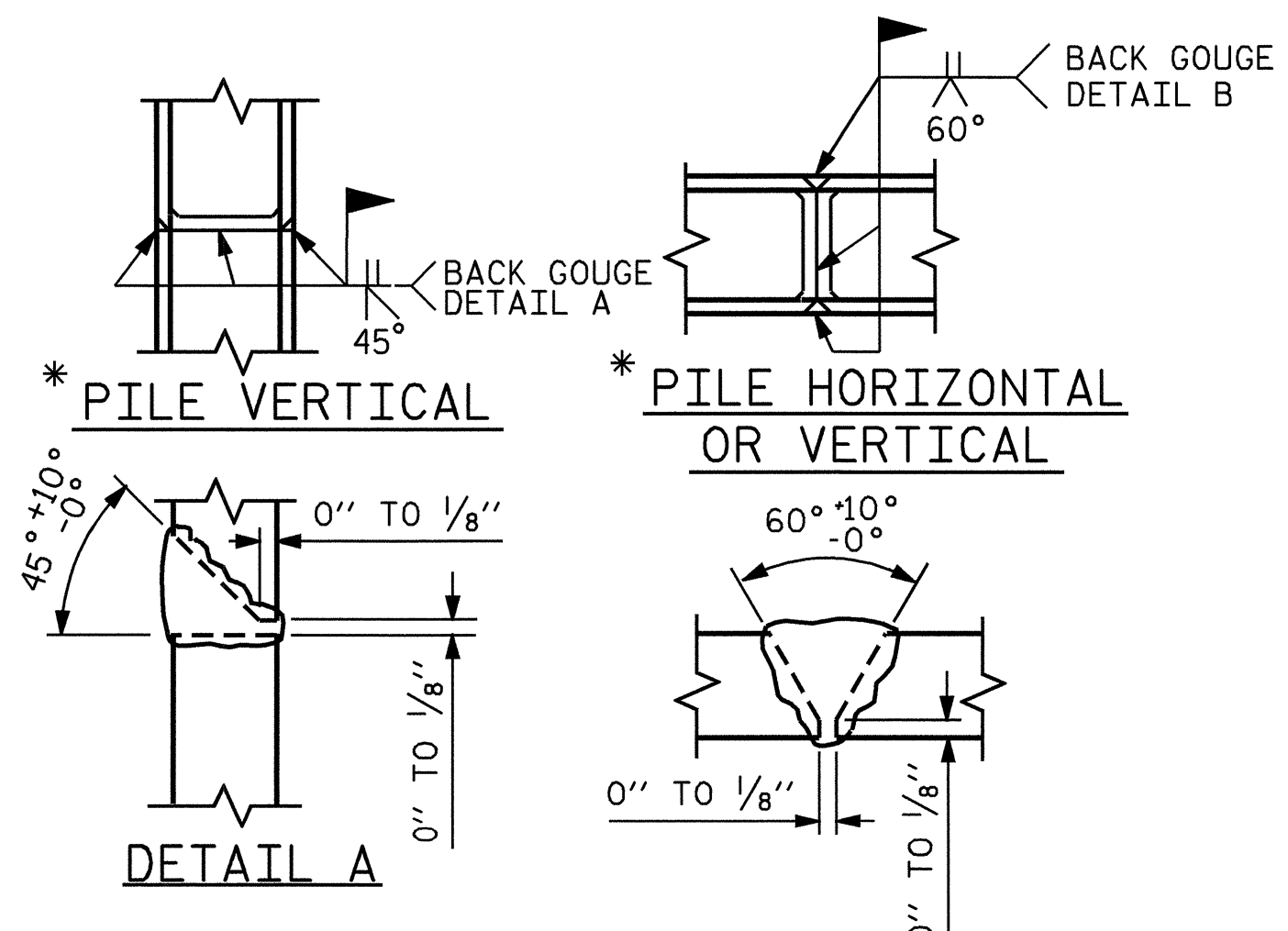
BAR NO.	SIZE	TYPE	LENGTH	WEIGHT
B1	#9	1	47'-0"	1278
B2	#6	STR	44'-8"	134
B3	#4	STR	23'-7"	126
B4	#4	STR	2'-5"	18
D1	#6	STR	1'-6"	59
H1	#4	2	5'-1"	68
S1	#4	3	7'-5"	218
S2	#4	4	3'-2"	93
S3	#4	5	6'-6"	69
S4	#4	6	4'-5"	12
S5	#4	STR	2'-6"	13
V1	#4	STR	3'-11"	42
V2	#4	STR	4'-1"	44

REINFORCING STEEL = 2174 LBS

CLASS A CONCRETE BREAKDOWN

POUR	DESCRIPTION	C.Y.	WEIGHT
POUR #1	CAP & LOWER PORTION OF WINGS		
	C.Y.	12.3	
POUR #2	WINGS		
	C.Y.	1.0	
LATERAL GUIDES	C.Y.	0.1	
TOTAL CLASS A CONCRETE	C.Y.	13.4	

HP 12 X 53 STEEL PILES  
NO. 8 LIN. FT. 240



\* POSITION OF PILE DURING WELDING.

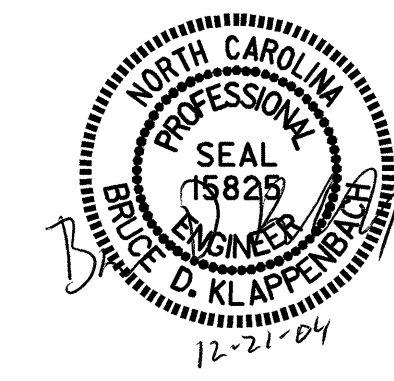
**PILE SPLICE DETAILS**

PROJECT NO. B-3703  
WAKE COUNTY  
STATION: 18+17.85 -L-

SHEET 3 OF 3

STATE OF NORTH CAROLINA  
DEPARTMENT OF TRANSPORTATION  
RALEIGH

**SUBSTRUCTURE END BENT #1**



REVISIONS						SHEET NO.
NO.	BY:	DATE:	NO.	BY:	DATE:	S-16
1			3			TOTAL SHEETS
2			4			27