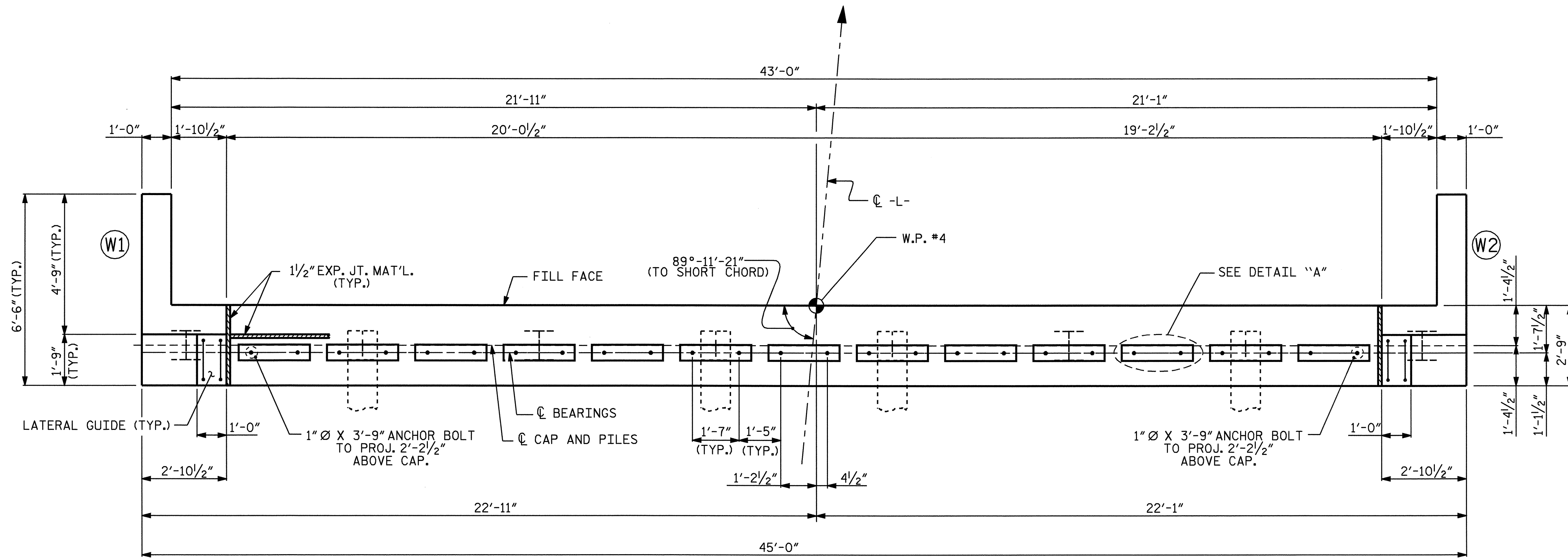


**NOTES**

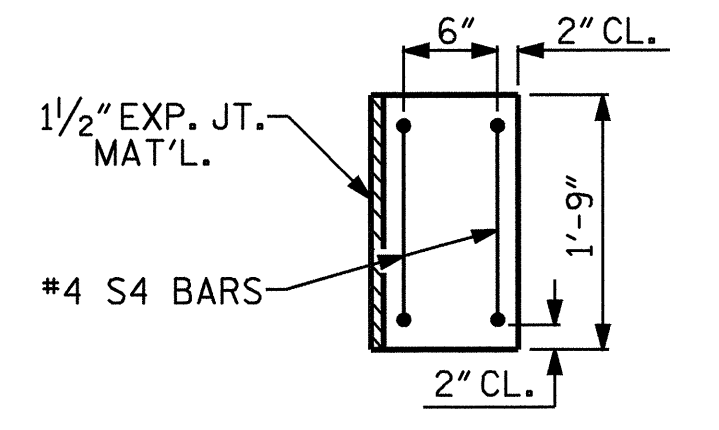
STIRRUPS IN CAP MAY BE SHIFTED AS NECESSARY TO CLEAR DOWELS.

THE LATERAL GUIDE AT EACH END OF THE CAP IS NOT TO BE POURED UNTIL AFTER THE CORED SLAB UNITS ARE IN PLACE.

THE CONTRACTOR SHALL PROVIDE FOR INSTALLATION OF THE 4" DIAMETER DRAIN PIPE THROUGH THE WING WALL AS REQUIRED FOR REINFORCED BRIDGE APPROACH FILLS, SEE THE ROADWAY PLANS. REINFORCING STEEL IN THE WING WALL MAY BE SHIFTED AS NECESSARY TO CLEAR THE DRAIN PIPE.

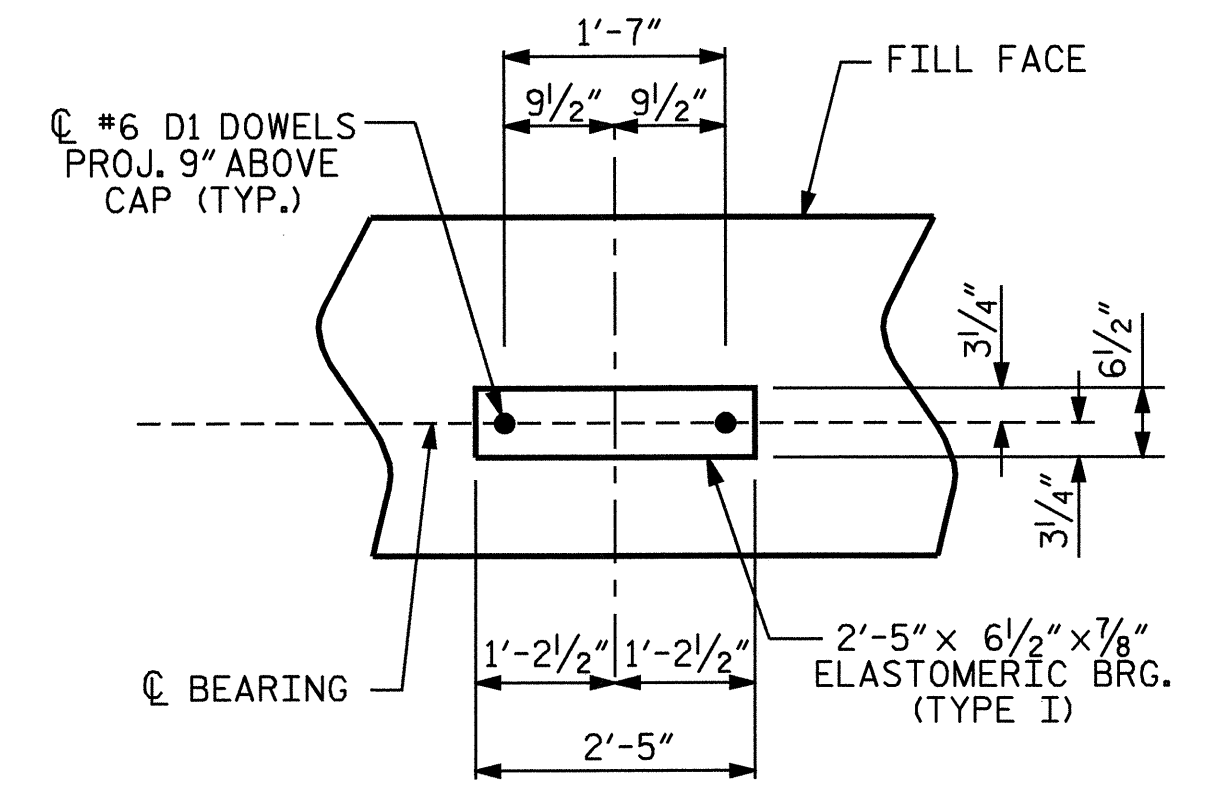


**PLAN**

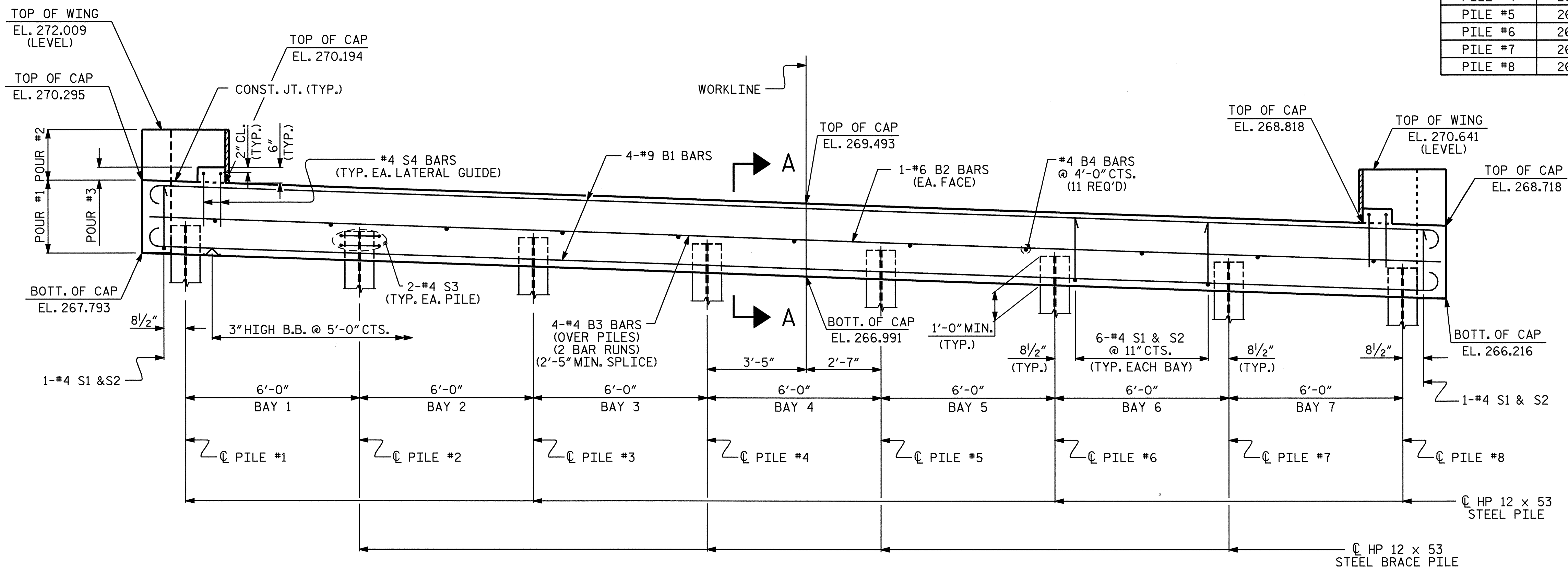


**LATERAL GUIDE**

TOP OF PILE ELEVATIONS	ELEVATION
PILE #1	268.758
PILE #2	268.548
PILE #3	268.337
PILE #4	268.127
PILE #5	267.917
PILE #6	267.707
PILE #7	267.496
PILE #8	267.286



**DETAIL "A"**



**ELEVATION**

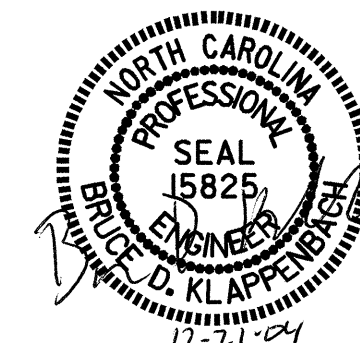
PROJECT NO. B-3703  
 WAKE COUNTY  
 STATION: 18+17.85 -L-

SHEET 1 OF 3

STATE OF NORTH CAROLINA  
 DEPARTMENT OF TRANSPORTATION  
 RALEIGH

**SUBSTRUCTURE  
 END BENT #2**

REVISIONS				SHEET NO.
DATE	NO.	BY	DATE	S-21
	3			TOTAL SHEETS
	4			27



DRAWN BY: M. G. SHAIKH DATE: 10-21-04  
 CHECKED BY: D. A. GLADDEN DATE: 10-26-04

20-DEC-2004 09:01  
 W:\squad1\B3703\mshalkh\MICROS\B-3703\B.DGN  
 mshalkh