

**DATUM DESCRIPTION**

THE LOCALIZED COORDINATE SYSTEM DEVELOPED FOR THIS PROJECT IS BASED ON THE STATE PLANE COORDINATES ESTABLISHED BY MCDOT FOR MONUMENT "B3703-1" WITH NAD 1983/95 STATE PLANE GRID COORDINATES OF NORTHING: 690589255(11) EASTING: 20779803432(11) THE AVERAGE COMBINED GRID FACTOR USED ON THIS PROJECT (GROUND TO GRID) IS: 0.99988555

THE N.C. LAMBERT GRID BEARING AND LOCALIZED HORIZONTAL GROUND DISTANCE FROM "B3703-1" TO -L- STATION 14+80.00 IS S 36° 41' 37.81" W 2615.0552 FT

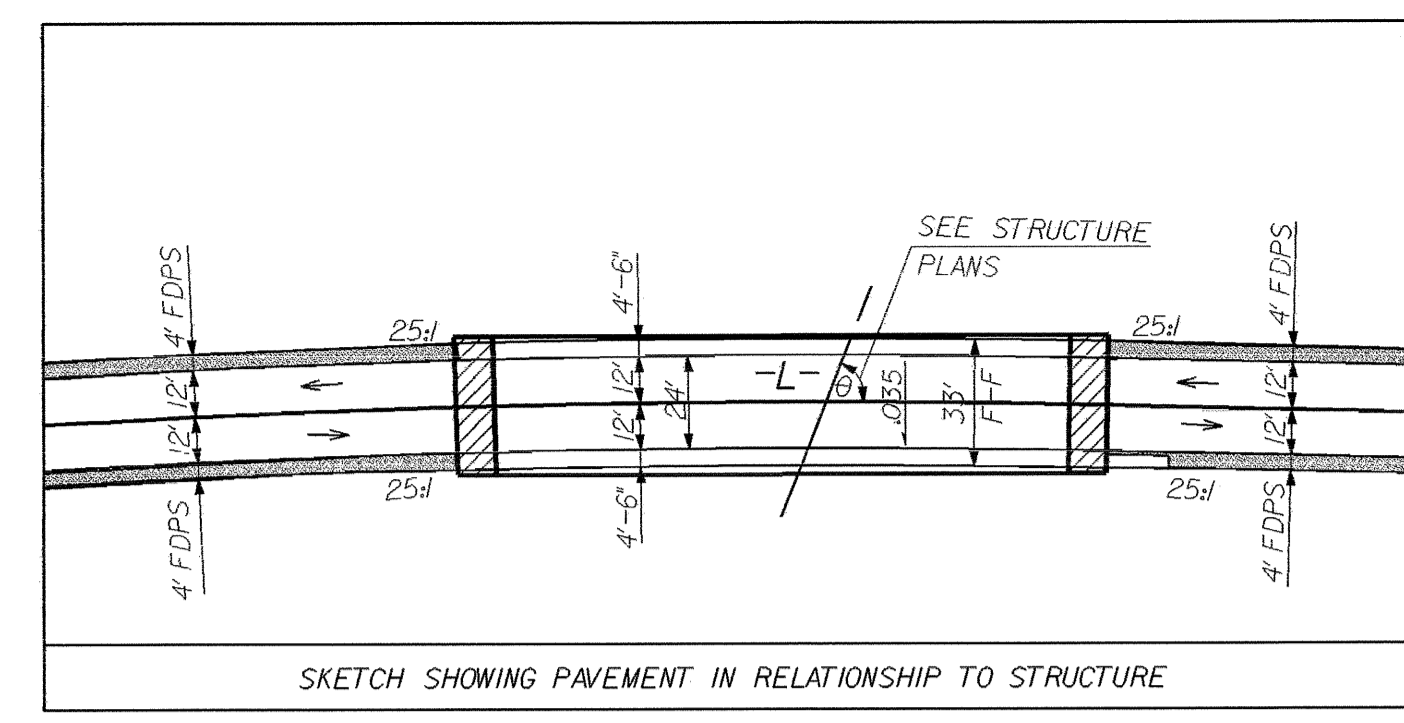
ALL LINEAR DIMENSIONS ARE LOCALIZED HORIZONTAL DISTANCES VERTICAL DATUM USED IS NAVD88

-L-

PI Sta 10+69.25	PI Sta 17+46.57
$\Delta = 4' 49" 06.5" (RT)$	$\Delta = 5' 18" 19.0" (RT)$
$D = 5' 43" 46.5"$	$D = 1' 38" 13.3"$
$L = 84.10'$	$L = 324.08'$
$T = 42.07'$	$T = 162.16'$
$R = 1,000.00'$	$R = 3,500.00'$

RUNOFF = SEE PLANS  
SE = 035\*  
DESIGN SPEED = 50 mph

\*SE = 035 USED DUE TO DRAINAGE SPREAD ACROSS BRIDGE.



**NOTE:** TEMPORARY SILT FENCE SHALL BE INSTALLED A MINIMUM OF 3 FEET FROM TOE OF FILL IN WETLAND AREAS

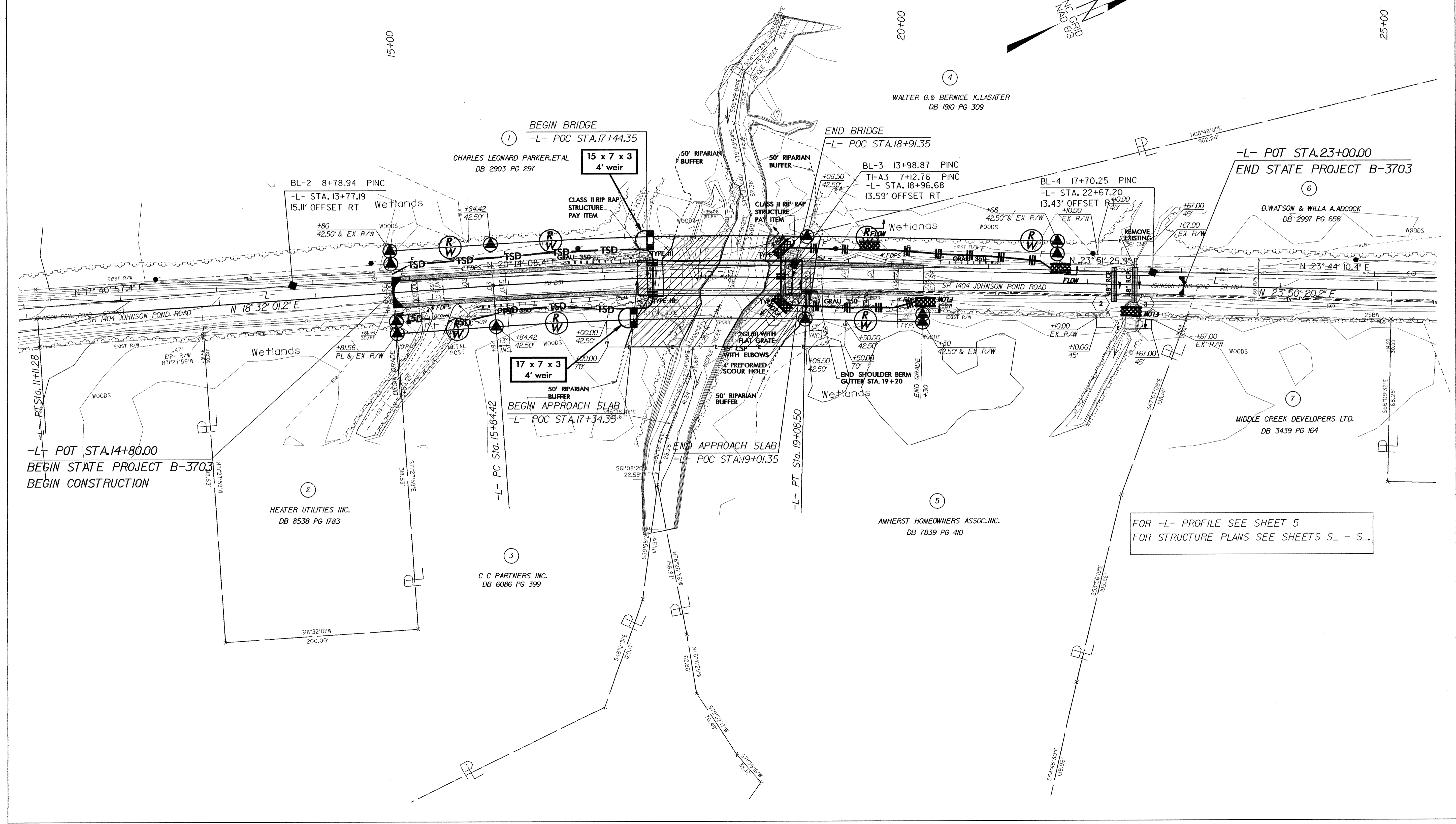
**NOTE:** UTILIZE TEMPORARY ROCK SEDIMENT DAM TYPE - B AS STILLING BASIN WHERE APPLICABLE.

**NOTE:** PLACE TEMPORARY ROCK SEDIMENT DAMS TYPE - B AND TEMPORARY ROCK SILT CHECKS TYPE - A AT DRAINAGE OUTLETS.

ENVIRONMENTALLY SENSITIVE AREA SEE PROJECT SPECIAL PROVISIONS

PROJECT REFERENCE NO. B-3703	SHEET NO. EC-3/CONST.4
ROADWAY DESIGN ENGINEER	HYDRAULICS ENGINEER

CLEARING AND GRUBBING EROSION CONTROL FOR CONSTRUCTION SHEET 4



FOR -L- PROFILE SEE SHEET 5  
FOR STRUCTURE PLANS SEE SHEETS S. - S.