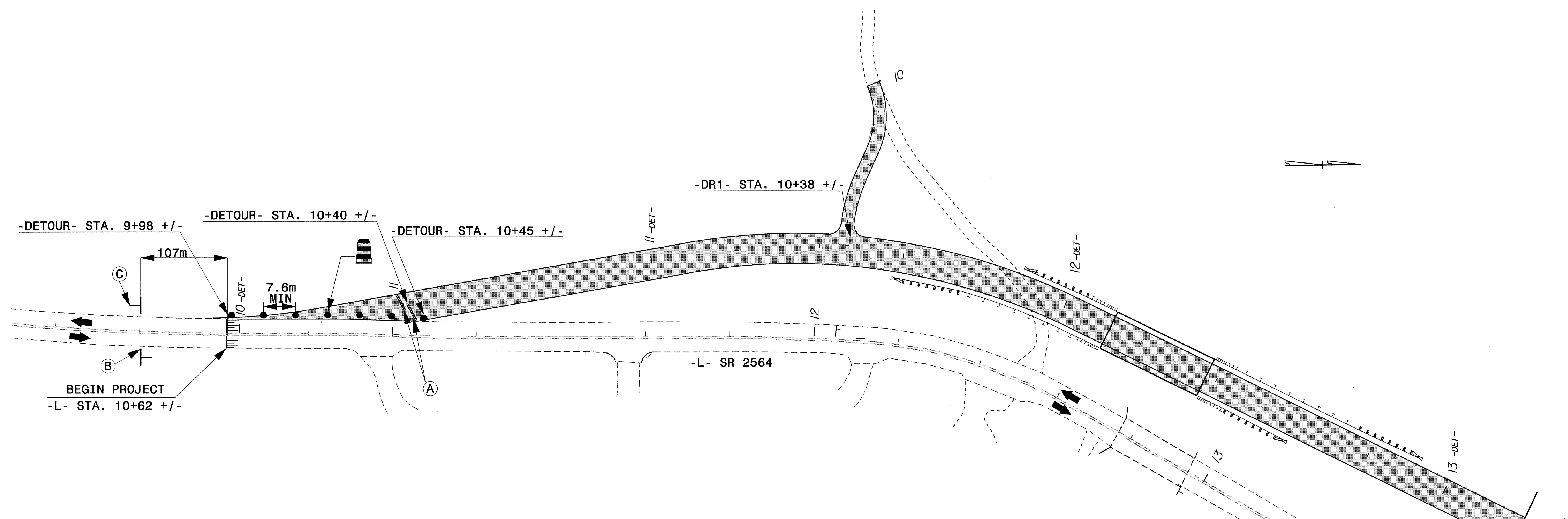




PROJ. REFERENCE NO.	SHEET NO.
B-3376	TCP-3

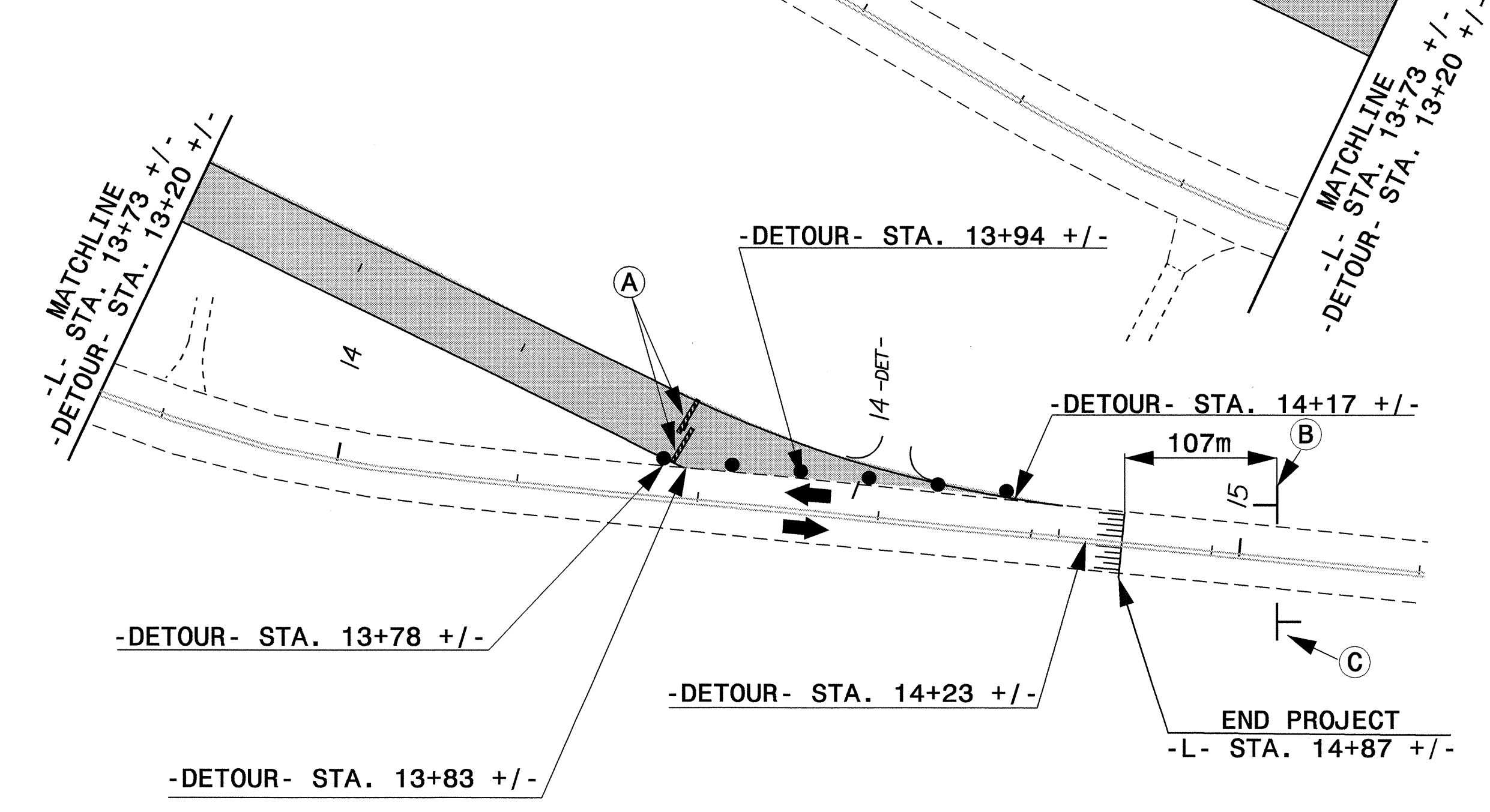
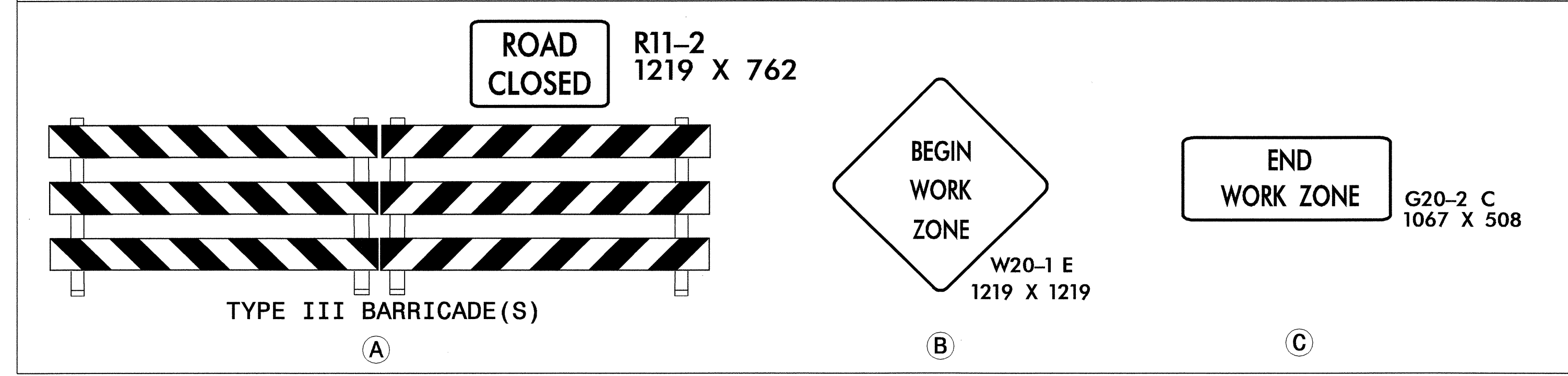


PHASE I

STEP 1: INSTALL ALL ADVANCE WARNING SIGNS ON SR 2564. IF WORK IS NOT PURSUED WITHIN THREE (3) DAYS OF SIGN INSTALLATION, THE SIGNS SHALL BE COVERED OR REMOVED IN A METHOD APPROVED BY THE ENGINEER ACCORDING TO SECTION 1110 AT NO EXPENSE TO THE DEPARTMENT. MAINTAIN ACCESS AT ALL TIMES TO ALL DRIVEWAYS WITHIN THE PROJECT LIMITS.

STEP 2: USING ROADWAY STANDARD DRAWING 1101.02 SHEET 1 OF 7, AS NEEDED, CONSTRUCT DETOUR BRIDGE AND ROADWAY APPROACHES FROM -DETOUR- STA. 9+98 +/- TO -DETOUR- STA. 14+17 +/- UP TO BUT NOT INCLUDING FINAL LAYER OF SURFACE COURSE AND -DR1- FROM -DR1- STA. 10+00 +/- TO -DR1- STA. 10+38 +/- UP TO THE EDGE AND ELEVATION OF -DETOUR- AND MAINTAIN DRIVE WITH INCIDENTAL

SEE TCP-2 FOR GENERAL NOTES FOR ADVANCE WORK ZONE WARNING SIGNS



APPROVED: *Jessica Kuse* DATE: 9/1/04

SEAL:

PHASE I

SCALE: NONE		REVISIONS
DATE: 7/2004		
DWG. BY: MLM		
DESIGN BY: MLM		
REVIEWED BY: JDK		

01-SEP-2004 10:39
 H:\TCP\B3376.TC\cp03.dgn
 mmarley AT TETC088647