

NOTES

THE COST OF THE BARRIER RAIL ON THE APPROACH SLAB SHALL BE INCLUDED IN THE LUMP SUM CONTRACT PRICE BID FOR BRIDGE APPROACH SLABS.

APPROACH SLAB SHALL NOT BE CONSTRUCTED PRIOR TO COMPLETION OF THE BRIDGE DECK.

FOR REINFORCED BRIDGE APPROACH FILL INCLUDING FABRIC, IMPERMEABLE GEOMEMBRANE, 102mm Ø DRAINAGE PIPE, #78M STONE, AND SELECT MATERIAL, SEE ROADWAY PLANS.

TEMPORARY DRAINAGE AND TEMPORARY BERM AND SLOPE DRAINS WILL BE PAID FOR UNDER THE LUMP SUM PRICE FOR BRIDGE APPROACH SLAB.

AREA BETWEEN THE WINGWALL AND APPROACH SLAB SHALL BE GRADED TO DRAIN THE WATER AWAY FROM THE FILL FACE OF THE BRIDGE AND SHALL BE PAVED. SEE ROADWAY PLANS.

THE 150mm COMP. A.B.C. SHALL EXTEND 3m BEYOND THE END OF THE APPROACH SLAB AND 300mm OUTSIDE OF EACH EDGE OF THE SLAB.

THE CONTRACTOR MAY USE 100mm TYPE B-25.0B ASPHALT CONCRETE COURSE IN LIEU OF 150mm COMP. A.B.C. IF THIS OPTION IS USED, THE BASE COURSE SHALL EXTEND 300mm BEYOND THE END OF THE APPROACH SLAB AND THE WIDTH SHALL BE THE SAME AS THAT OF THE APPROACH SLAB.

THE CONTRACTOR MAY USE 125mm CLASS "A" CONCRETE BASE IN LIEU OF 150mm COMP. A.B.C. IF THIS OPTION IS USED, THE CONCRETE BASE SHALL EXTEND 300mm BEYOND THE END OF THE APPROACH SLAB AND THE WIDTH SHALL BE THE SAME AS THAT OF THE APPROACH SLAB. THE CONCRETE SHALL BE FINISHED TO A SMOOTH SURFACE AND A LAYER OF 13.6 kg. ROOFING FELT SHALL BE PLACED BETWEEN THE CONCRETE BASE AND THE APPROACH SLAB TO PREVENT BOND. THE APPROACH SLAB SHALL NOT BE CAST UNTIL THE CONCRETE BASE HAS REACHED AN AGE OF THREE CURING DAYS.

THE JOINT SHALL BE SAWED PRIOR TO THE CASTING OF THE BARRIER RAIL.

APPROACH SLAB GROOVING IS REQUIRED. PAYMENT FOR APPROVED SLAB GROOVING IS INCLUDED IN THE "GROOVING BRIDGE FLOORS" PAY ITEM.

WITH EVAZOTE JOINT SEAL

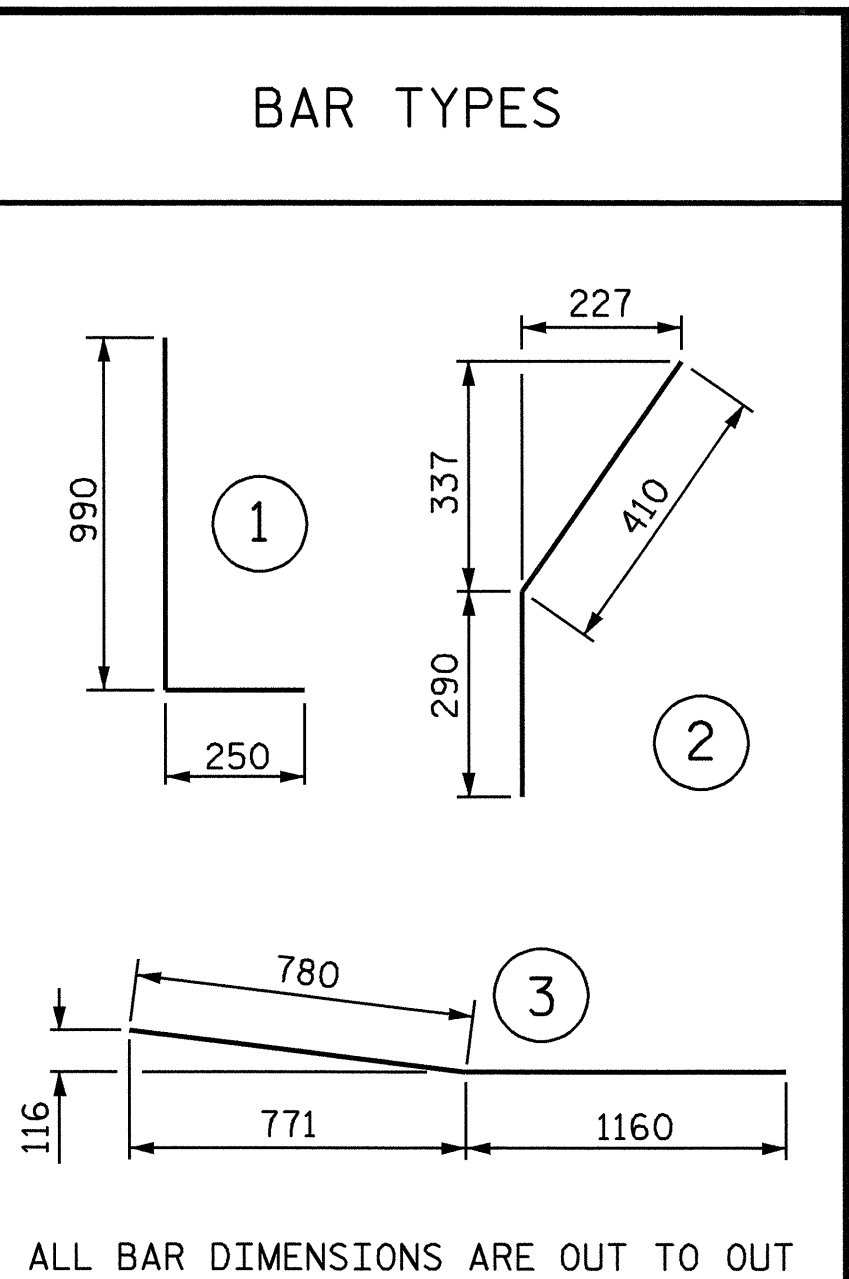
FOR EVAZOTE JOINT SEALS, SEE SPECIAL PROVISIONS.

THE NOMINAL UNCOMPRESSED SEAL WIDTH OF THE EVAZOTE JOINT SEAL SHALL BE 64mm.

FOR ELASTOMERIC CONCRETE, SEE SPECIAL PROVISIONS.

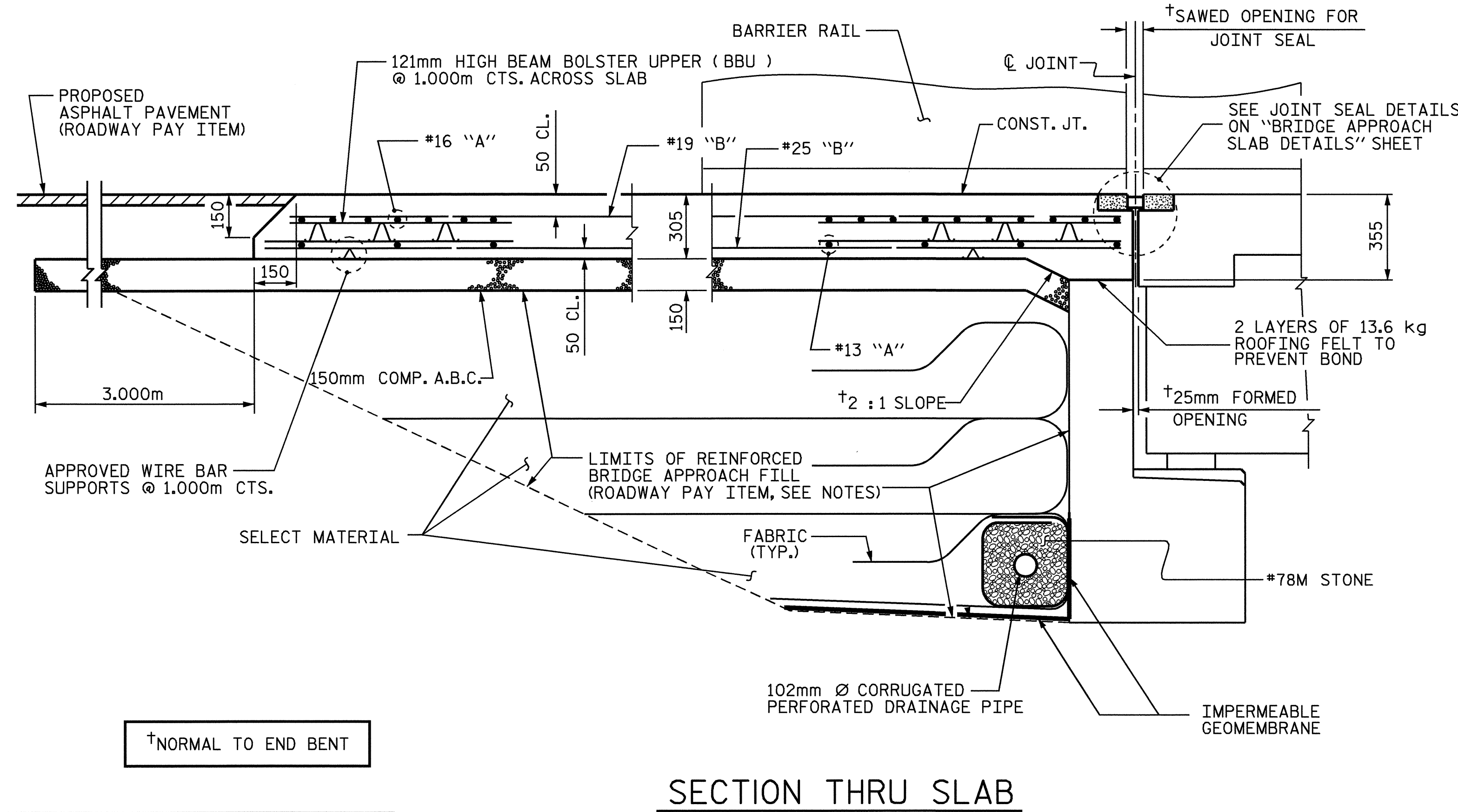
PAYMENT FOR ELASTOMERIC CONCRETE SHALL BE INCLUDED IN THE LUMP SUM PAY ITEM FOR EVAZOTE JOINT SEALS.

BILL OF MATERIAL FOR APPROACH SLAB @ END BENT 1						
BAR	NO.	SIZE	TYPE	LENGTH	WEIGHT	
*A100	24	#16	STR	11480	428	
*A101	28	#16	STR	11360	494	
A200	48	#13	STR	6020	132	
A201	56	#13	STR	5960	332	
*B100	9	#19	STR	7400	149	
*B101	18	#19	STR	7500	302	
*B102	9	#19	STR	7600	153	
*B103	9	#19	STR	7700	155	
*B104	18	#19	STR	7800	314	
*B105	13	#19	STR	7900	230	
B200	9	#25	STR	7500	268	
B201	9	#25	STR	7600	272	
B202	9	#25	STR	7700	275	
B203	18	#25	STR	7800	558	
B204	9	#25	STR	7900	282	
B205	18	#25	STR	8000	572	
B206	4	#25	STR	8100	129	
*B300	14	#16	STR	3540	77	
*B400	2	#16	3	1940	6	
*S1	58	#16	STR	1000	90	
*S2	42	#16	1	1240	81	
*S3	20	#16	2	700	22	
REINFORCING STEEL					kg.	2820
*EPOXY COATED REINFORCING STEEL					kg.	2501
CLASS AA CONCRETE BREAKDOWN						
POUR 1 SLAB					C. M.	28.3
POUR 2 RAIL					C. M.	1.6
CLASS AA CONCRETE					C. M.	29.9
ELASTOMERIC CONCRETE					C. M.	.2

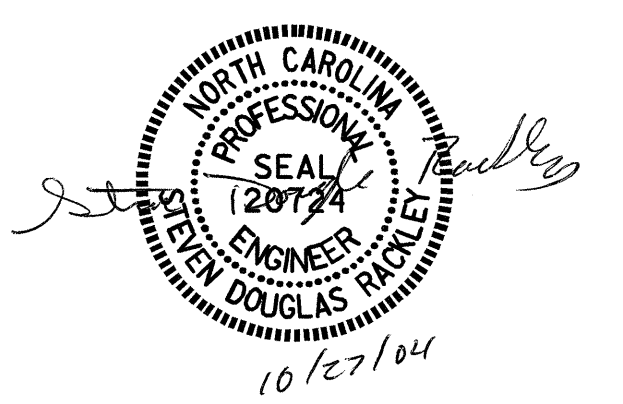
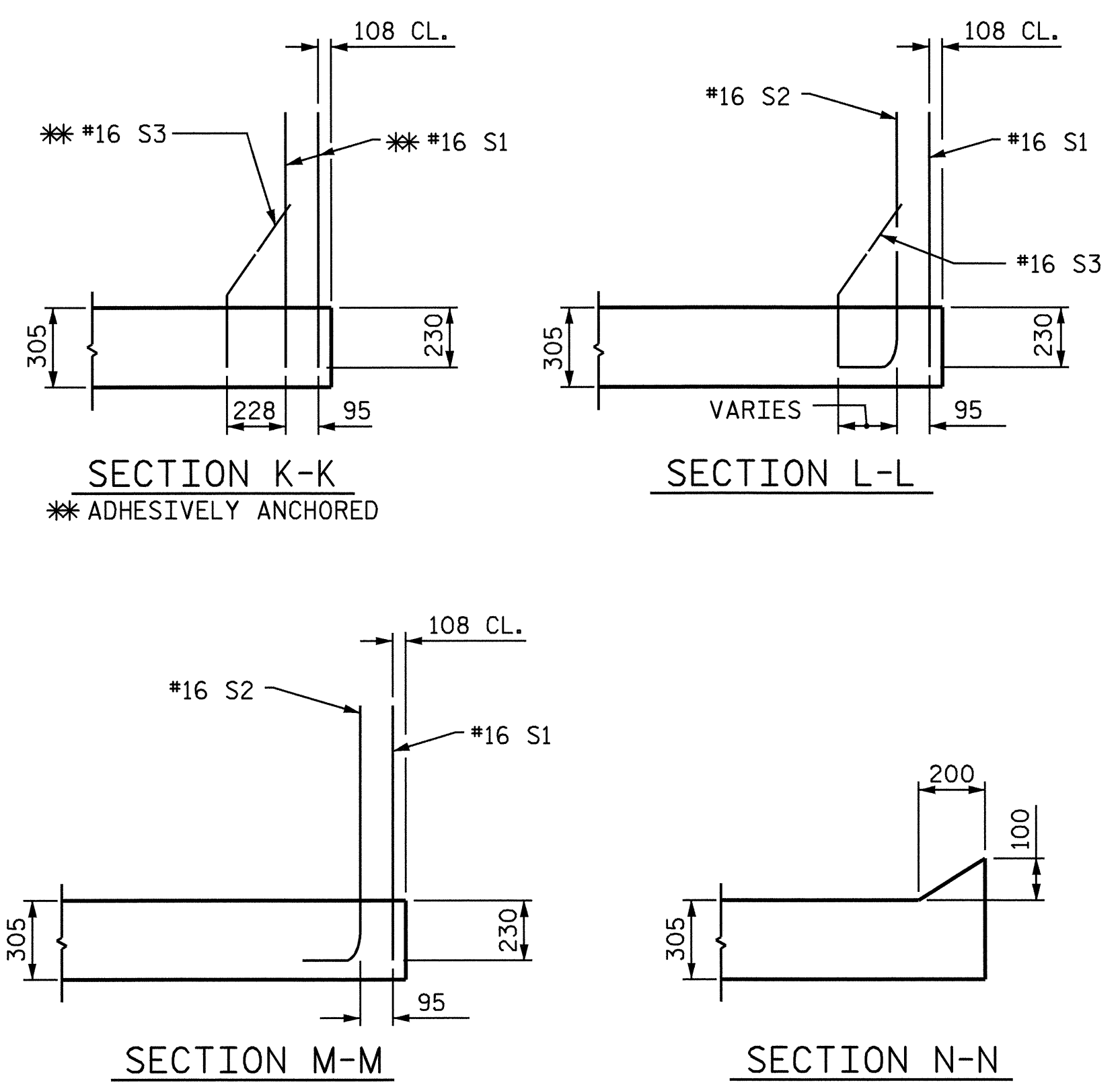


ALL BAR DIMENSIONS ARE OUT TO OUT

BILL OF MATERIAL FOR APPROACH SLAB @ END BENT 2						
BAR	NO.	SIZE	TYPE	LENGTH	WEIGHT	
*A100	24	#16	STR	11480	428	
*A101	26	#16	STR	11360	458	
A200	48	#13	STR	6020	287	
A201	54	#13	STR	5960	320	
*B100	77	#19	STR	7360	1267	
B200	77	#25	STR	7520	2301	
*B300	14	#16	STR	3540	77	
*B400	2	#16	3	1940	6	
*S1	58	#16	STR	1000	90	
*S2	42	#16	1	1240	81	
*S3	20	#16	2	700	22	
REINFORCING STEEL					kg.	2908
*EPOXY COATED REINFORCING STEEL					kg.	2429
CLASS AA CONCRETE BREAKDOWN						
POUR 1 SLAB					C. M.	27.2
POUR 2 RAIL					C. M.	1.6
CLASS AA CONCRETE					C. M.	28.8
ELASTOMERIC CONCRETE					C. M.	.2



SECTION THRU SLAB



PROJECT NO. B-3376
WAKE COUNTY
 STATION: 12+90.000 -L-

SHEET 2 OF 4
 STATE OF NORTH CAROLINA
 DEPARTMENT OF TRANSPORTATION
 RALEIGH
 STANDARD
 BRIDGE APPROACH SLAB
 FOR FLEXIBLE PAVEMENT
 WITH BARRIER RAIL

REVISIONS						SHEET NO.
NO.	BY:	DATE:	NO.	BY:	DATE:	S-21
1			3			TOTAL SHEETS 23
2			4			

ASSEMBLED BY : M.K. BEARD	DATE : 05/13/04
CHECKED BY : A.K. PATEL	DATE : 06/07/04
DRAWN BY : RWW	8/01
CHECKED BY : LES	8/01
ADDED	12/01
REV.	5/7/03
RWW/JTE	