

ENVIRONMENTALLY SENSITIVE AREA
SEE PROJECT SPECIAL PROVISIONS

-DET-
PI Sta 10+11.615 PI Sta 11+62.483
 $\Delta = 10' 37" 01.6" (LT)$ $\Delta = 36' 08" 59.6" (RT)$
L = 23J63 L = 94.640
T = 11.615 T = 48.955
R = 125.000 R = 150.000

NOTE:
UTILIZE TEMPORARY ROCK SEDIMENT DAM TYPE - B
AS STILLING BASIN WHERE APPLICABLE.

NOTE:
PLACE TEMPORARY ROCK SEDIMENT DAMS TYPE-B
AND TEMPORARY ROCK SILT CHECKS TYPE-A AT
DRAINAGE OUTLETS.

METRIC

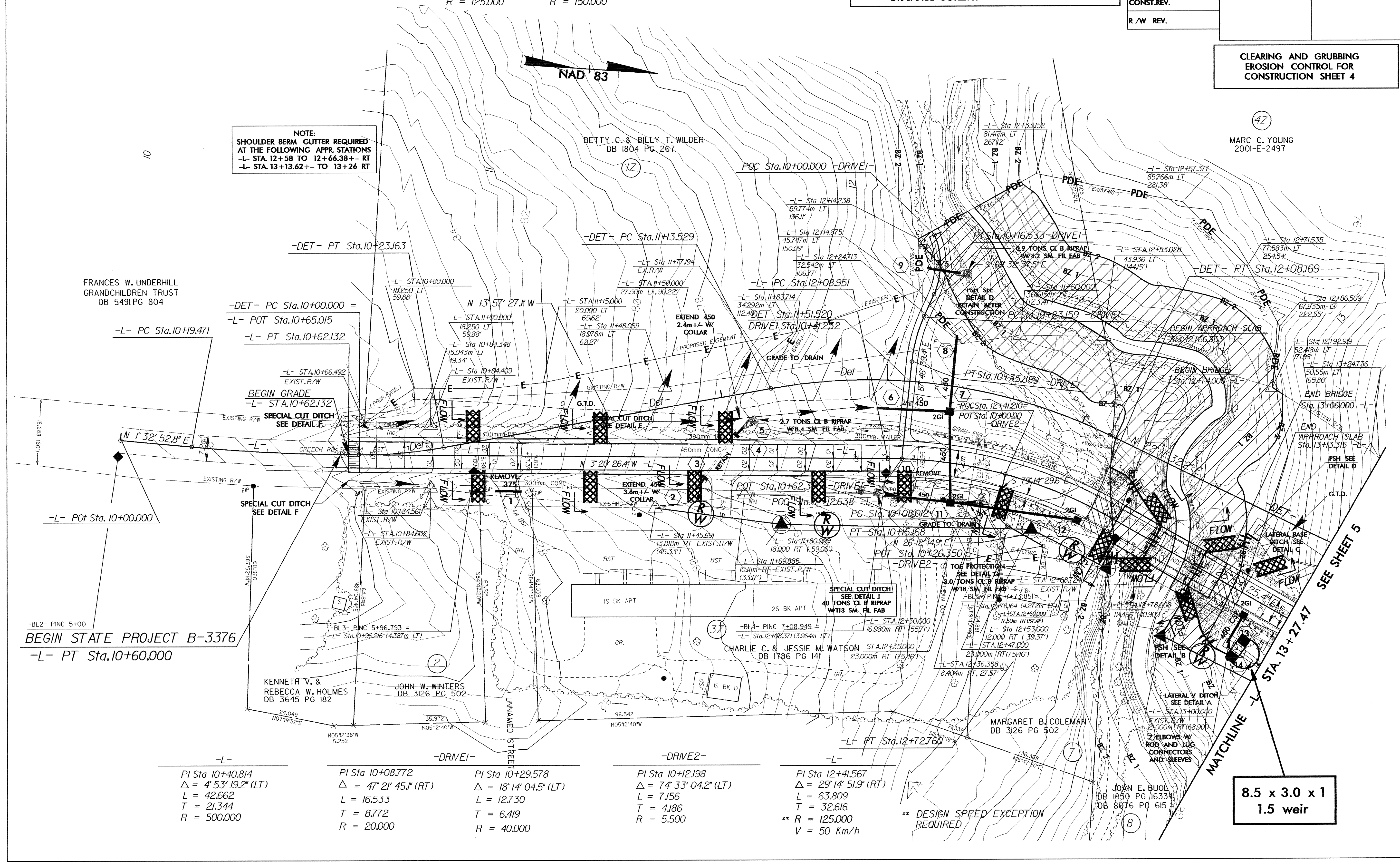
CONST. REV.
R / W REV.

PROJECT REFERENCE NO. B-3376	SHEET NO. EC-3/CONST.4
R / W SHEET NO.	HYDRAULICS ENGINEER
ROADWAY DESIGN ENGINEER	

CLEARING AND GRUBBING
EROSION CONTROL FOR
CONSTRUCTION SHEET 4

(42)
MARC C. YOUNG
2001-E-2497

NOTE:
SHOULDER BERM GUTTER REQUIRED
AT THE FOLLOWING APPR. STATIONS
-L- STA. 12+58 TO 12+66.38+- RT
-L- STA. 13+13.62+- TO 13+26 RT



BEGIN STATE PROJECT B-3376
-L- PT Sta. 10+60.000

-L-
PI Sta 10+40.814
 $\Delta = 4' 53" 19.2" (LT)$
L = 42.662
T = 21.344
R = 500.000

-DRIVE1-
PI Sta 10+08.772
 $\Delta = 47' 21" 45.1" (RT)$
L = 16.533
T = 8.772
R = 20.000

PI Sta 10+29.578
 $\Delta = 18' 14" 04.5" (LT)$
L = 12.730
T = 6.419
R = 40.000

-DRIVE2-
PI Sta 10+12.198
 $\Delta = 74' 33" 04.2" (LT)$
L = 7.156
T = 4.186
R = 5.500

-L-
PI Sta 12+41.567
 $\Delta = 29' 14" 51.9" (RT)$
L = 63.809
T = 32.616
R = 125.000
V = 50 Km/h

** DESIGN SPEED EXCEPTION
REQUIRED

8.5 x 3.0 x 1
1.5 weir

SEE SHEET 5

MATCHLINE -
STA. 13+27.47