

22-MAY-2003 13:53 \\er\shared\stds\02\stds to Special Details\english\86202\086202.dgn
 er\ward At 05/22/03

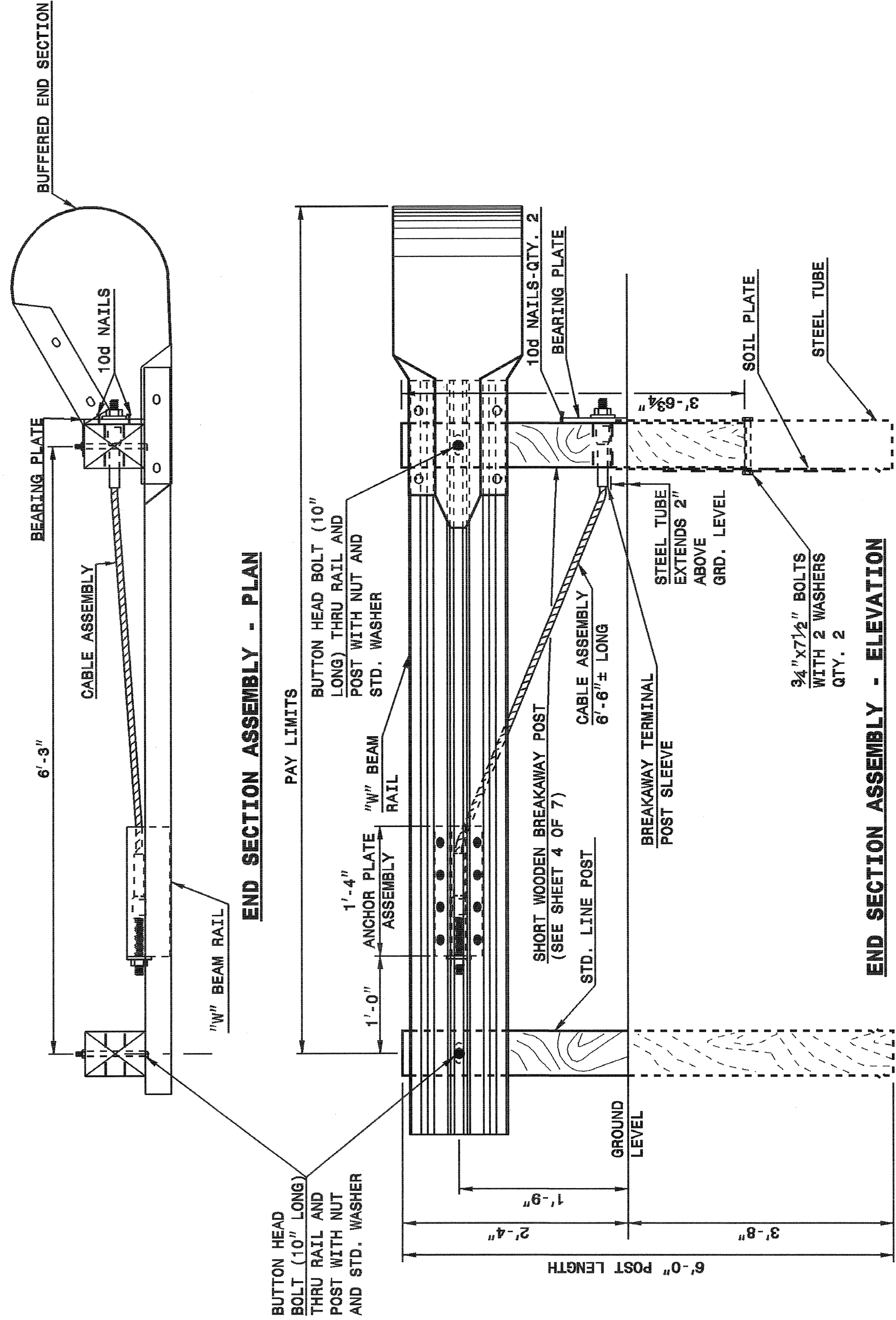
5/14/99

STATE OF NORTH CAROLINA
 DEPT. OF TRANSPORTATION
 DIVISION OF HIGHWAYS
 RALEIGH, N.C.

STATE OF NORTH CAROLINA
 DEPT. OF TRANSPORTATION
 DIVISION OF HIGHWAYS
 RALEIGH, N.C.

ENGLISH DETAIL DRAWING FOR
GUARDRAIL INSTALLATION

ENGLISH DETAIL DRAWING FOR
GUARDRAIL INSTALLATION



SHEET 1 OF 7
862D02

C.A.T.-1 SYSTEM

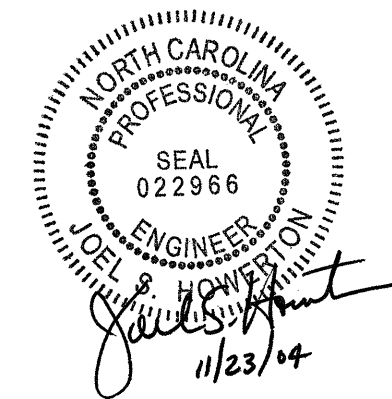
END SECTION ASSEMBLY - ELEVATION

END SECTION ASSEMBLY - PLAN

ORIGINAL BY: 2002 STD. 862.02 DATE:
 MODIFIED BY: E.E. WARD DATE: 02-09-03
 CHECKED BY: DATE:
 FILE SPEC.: /usr/stds/02stdetail/english/86202/862d02.dgn

DESIGN SERVICES UNIT
 STANDARDS AND SPECIAL DESIGN
 Office 919-250-4128 FAX 919-250-4119

SEE PLATE FOR TITLE

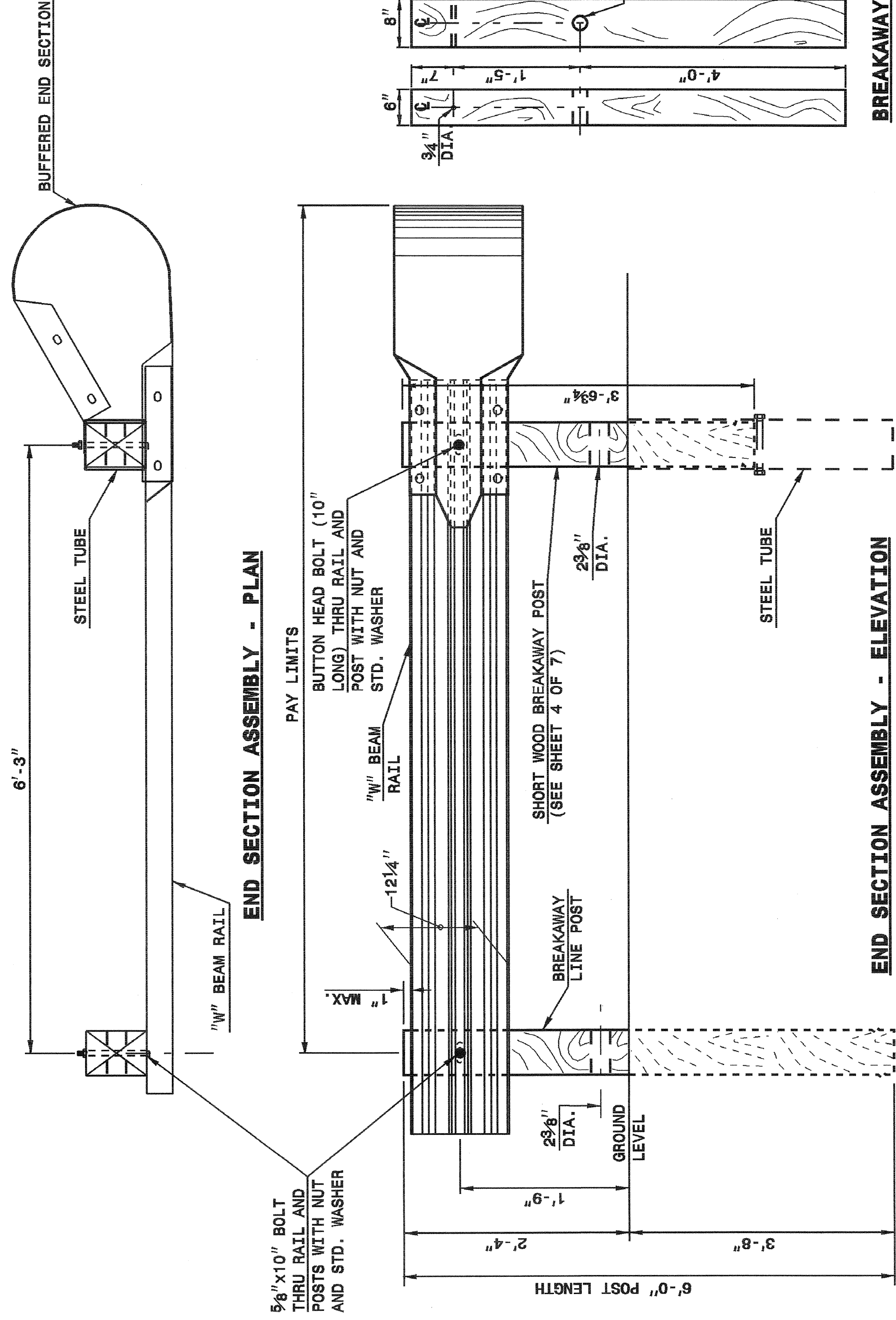


STATE OF NORTH CAROLINA
 DEPT. OF TRANSPORTATION
 DIVISION OF HIGHWAYS
 RALEIGH, N.C.

STATE OF NORTH CAROLINA
 DEPT. OF TRANSPORTATION
 DIVISION OF HIGHWAYS
 RALEIGH, N.C.

ENGLISH DETAIL DRAWING FOR
GUARDRAIL INSTALLATION

ENGLISH DETAIL DRAWING FOR
GUARDRAIL INSTALLATION



SHEET 2 OF 7
862D02

A.T.-1 SYSTEM

END SECTION ASSEMBLY - ELEVATION

END SECTION ASSEMBLY - PLAN

BREAKAWAY
 LINE POST