

# REINFORCING BAR SCHEDULE

## BAR TYPES

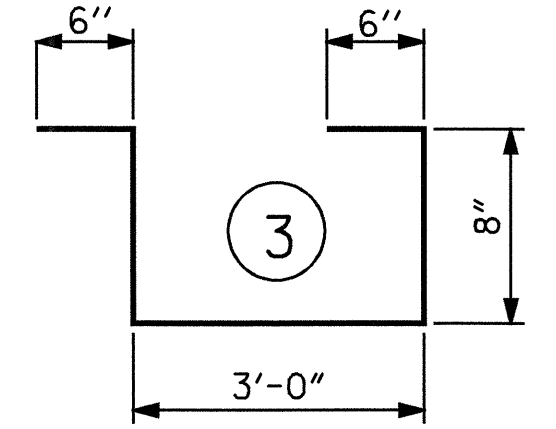
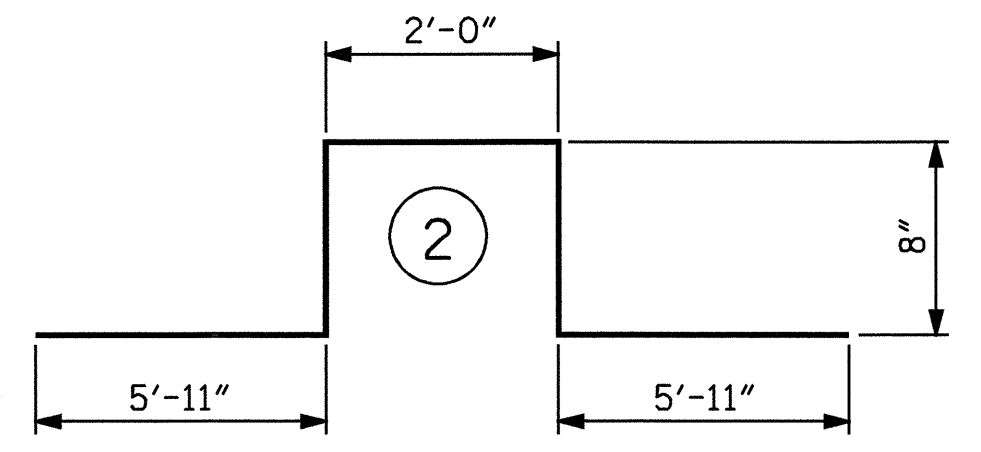
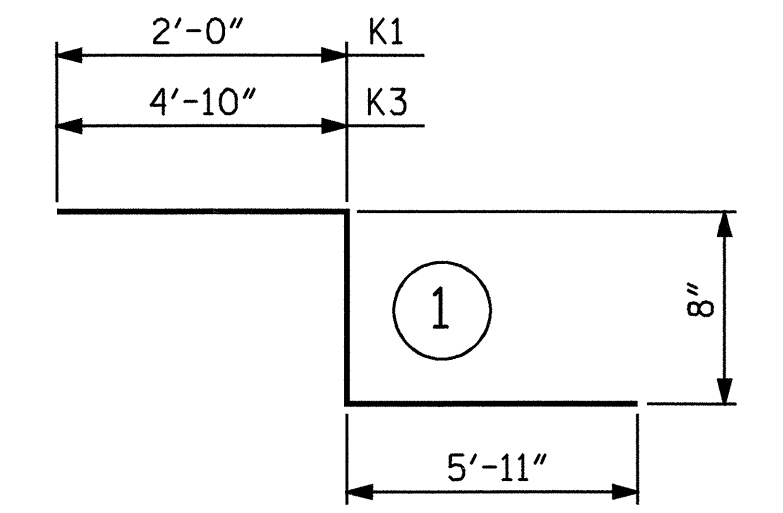
SUPERSTRUCTURE REINFORCING STEEL LENGTHS ARE BASED ON THE FOLLOWING MINIMUM SPLICE LENGTHS

BAR SIZE	SUPERSTRUCTURE EXCEPT APPROACH SLABS, PARAPET, AND BARRIER RAIL		APPROACH SLABS		PARAPET AND BARRIER RAIL
	EPOXY COATED	UNCOATED	EPOXY COATED	UNCOATED	
#4	2'-0"	1'-9"	2'-0"	1'-9"	2'-9"
#5	2'-6"	2'-2"	2'-6"	2'-2"	3'-5"
#6	3'-0"	2'-7"	3'-10"	2'-7"	4'-4"
#7	5'-3"	3'-6"			
#8	6'-10"	4'-7"			

STAGE I CONSTRUCTION					
BAR	NUM	SZ	TYP	LENGTH	WEIGHT
*A1	269	5	STR	30-11	8674
A2	271	5	STR	30-11	8739
*A7	3	6	STR	4-6	20
*A101	4	5	STR	29-7	123
*A102	4	5	STR	28-1	117
*A103	4	5	STR	26-7	111
*A104	4	5	STR	25-1	105
*A105	4	5	STR	23-7	98
*A106	4	5	STR	22-1	92
*A107	4	5	STR	20-7	86
*A108	4	5	STR	19-2	80
*A109	4	5	STR	17-8	74
*A110	4	5	STR	16-2	67
*A111	4	5	STR	14-8	61
*A112	4	5	STR	13-2	55
*A113	4	5	STR	11-8	49
*A114	4	5	STR	10-2	42
*A115	4	5	STR	8-8	36
*A116	4	5	STR	7-2	30
*A117	4	5	STR	5-9	24
*A118	4	5	STR	4-3	18
*A119	4	5	STR	2-9	11
A201	4	5	STR	29-7	123
A202	4	5	STR	28-1	117
A203	4	5	STR	26-7	111
A204	4	5	STR	25-1	105
A205	4	5	STR	23-7	98
A206	4	5	STR	22-1	92
A207	4	5	STR	20-7	86
A208	4	5	STR	19-2	80
A209	4	5	STR	17-8	74
A210	4	5	STR	16-2	67
A211	4	5	STR	14-8	61
A212	4	5	STR	13-2	55
A213	4	5	STR	11-8	49
A214	4	5	STR	10-2	42
A215	4	5	STR	8-8	36
A216	4	5	STR	7-2	30
A217	4	5	STR	5-9	24
A218	4	5	STR	4-3	18
A219	4	5	STR	2-9	11
*B1	132	4	STR	29-11	2638
B2	114	5	STR	57-10	6876
*D1	307	5	STR	1-10	587
*G1	2	5	STR	38-3	80
*K1	6	5	1	8-7	54
*K2	12	5	2	15-2	190
*K3	6	5	1	11-5	71
*S1	48	4	3	5-4	171
REINFORCING STEEL					LBS. 16894
* EPOXY COATED REINFORCING STEEL					LBS. 13764

STAGE II CONSTRUCTION					
BAR	NUM	SZ	TYP	LENGTH	WEIGHT
*A3	283	5	STR	20-11	6174
A4	285	5	STR	20-11	6218
*A7	3	6	STR	4-6	20
*A301	4	5	STR	19-5	81
*A302	4	5	STR	17-11	75
*A303	4	5	STR	16-5	68
*A304	4	5	STR	14-11	62
*A305	4	5	STR	13-5	56
*A306	4	5	STR	11-11	50
*A307	4	5	STR	10-5	43
*A308	4	5	STR	8-11	37
*A309	4	5	STR	7-6	31
*A310	4	5	STR	6-0	25
*A311	4	5	STR	4-6	19
*A312	4	5	STR	3-0	13
A401	4	5	STR	19-5	81
A402	4	5	STR	17-11	75
A403	4	5	STR	16-5	68
A404	4	5	STR	14-11	62
A405	4	5	STR	13-5	56
A406	4	5	STR	11-11	50
A407	4	5	STR	10-5	43
A408	4	5	STR	8-11	37
A409	4	5	STR	7-6	31
A410	4	5	STR	6-0	25
A411	4	5	STR	4-6	19
A412	4	5	STR	3-0	13
*B1	90	4	STR	29-11	1799
B2	75	5	STR	57-10	4524
*D1	308	5	STR	1-10	589
*G2	2	5	STR	25-10	54
*K1	6	5	1	8-7	54
*K2	6	5	2	15-2	95
*K3	6	5	1	11-5	71
*S1	28	4	3	5-4	100
REINFORCING STEEL					LBS. 11302
* EPOXY COATED REINFORCING STEEL					LBS. 9516

STAGE III CONSTRUCTION					
BAR	NUM	SZ	TYP	LENGTH	WEIGHT
*A5	308	5	STR	1-8	535
A6	308	5	STR	1-8	535
*B1	12	4	STR	29-11	240
B2	9	5	STR	57-10	543
*G3	2	5	STR	2-0	4
REINFORCING STEEL					LBS. 1078
* EPOXY COATED REINFORCING STEEL					LBS. 779



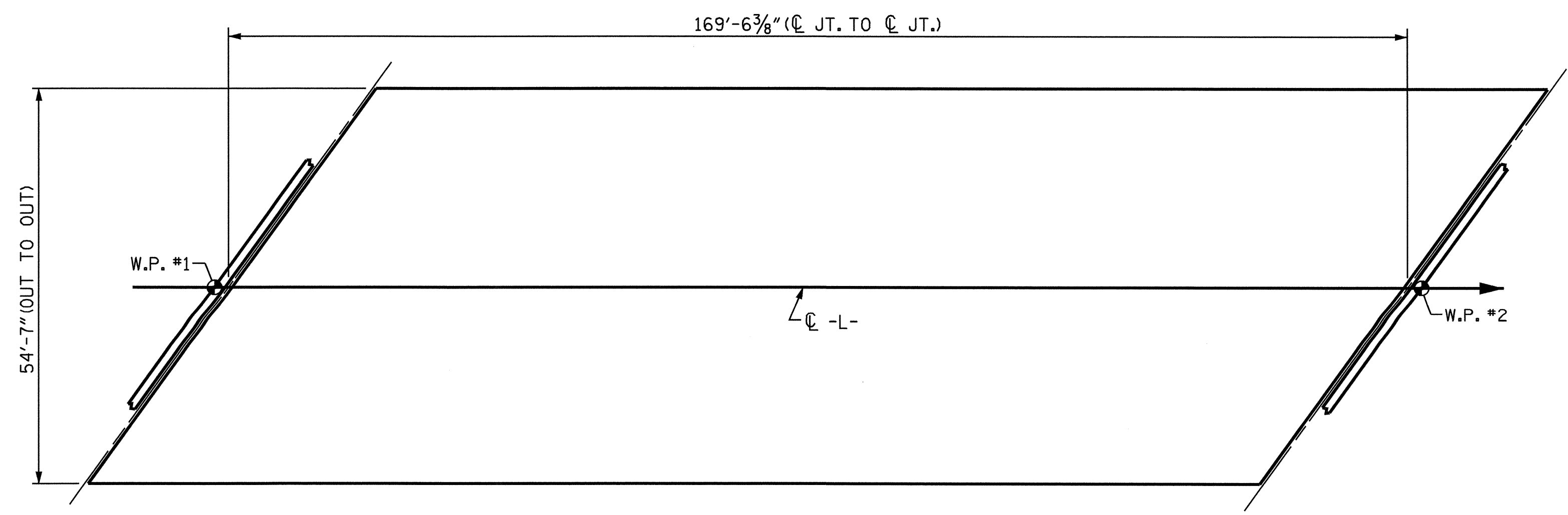
ALL BAR DIMENSIONS ARE OUT TO OUT

### — SUPERSTRUCTURE BILL OF MATERIAL —

	CLASS AA CONCRETE (CU.YDS.)	REINFORCING STEEL (LBS.)	EPOXY COATED REINFORCING STEEL (LBS.)
STAGE I	169.2	16894	13764
STAGE II	116.4	11302	9516
STAGE III	11.8	1078	779
TOTALS**	297.4	29274	24059

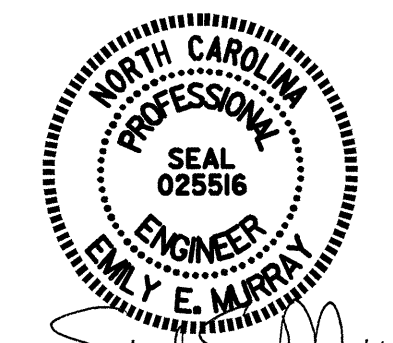
\*\*QUANTITIES FOR PARAPET & END POSTS ARE NOT INCLUDED

PROJECT NO. B-3375  
WAKE COUNTY  
 STATION: 43+81.84 -L-



LAYOUT FOR COMPUTING AREA OF REINFORCED CONCRETE DECK SLAB (SQ. FT. = 9254)

	GROOVING BRIDGE FLOORS	
STAGE I	BRIDGE DECK	4784 SQ.FT.
	APPROACH SLABS	1334 SQ.FT.
	TOTAL	6118 SQ.FT.
STAGE II & III	BRIDGE DECK	3441 SQ.FT.
	APPROACH SLABS	960 SQ.FT.
	TOTAL	4401 SQ.FT.



*Emily E. Murray*  
12/17/04

STATE OF NORTH CAROLINA DEPARTMENT OF TRANSPORTATION RALEIGH SUPERSTRUCTURE					
BILL OF MATERIAL					
REVISIONS					
NO.	BY:	DATE:	NO.	BY:	DATE:
1			3		
2			4		

SHEET NO. S-24
TOTAL SHEETS 37

DRAWN BY: M. M. PARSONS DATE: 6/2/04  
 CHECKED BY: W. D. CRUTCHER DATE: 10/04