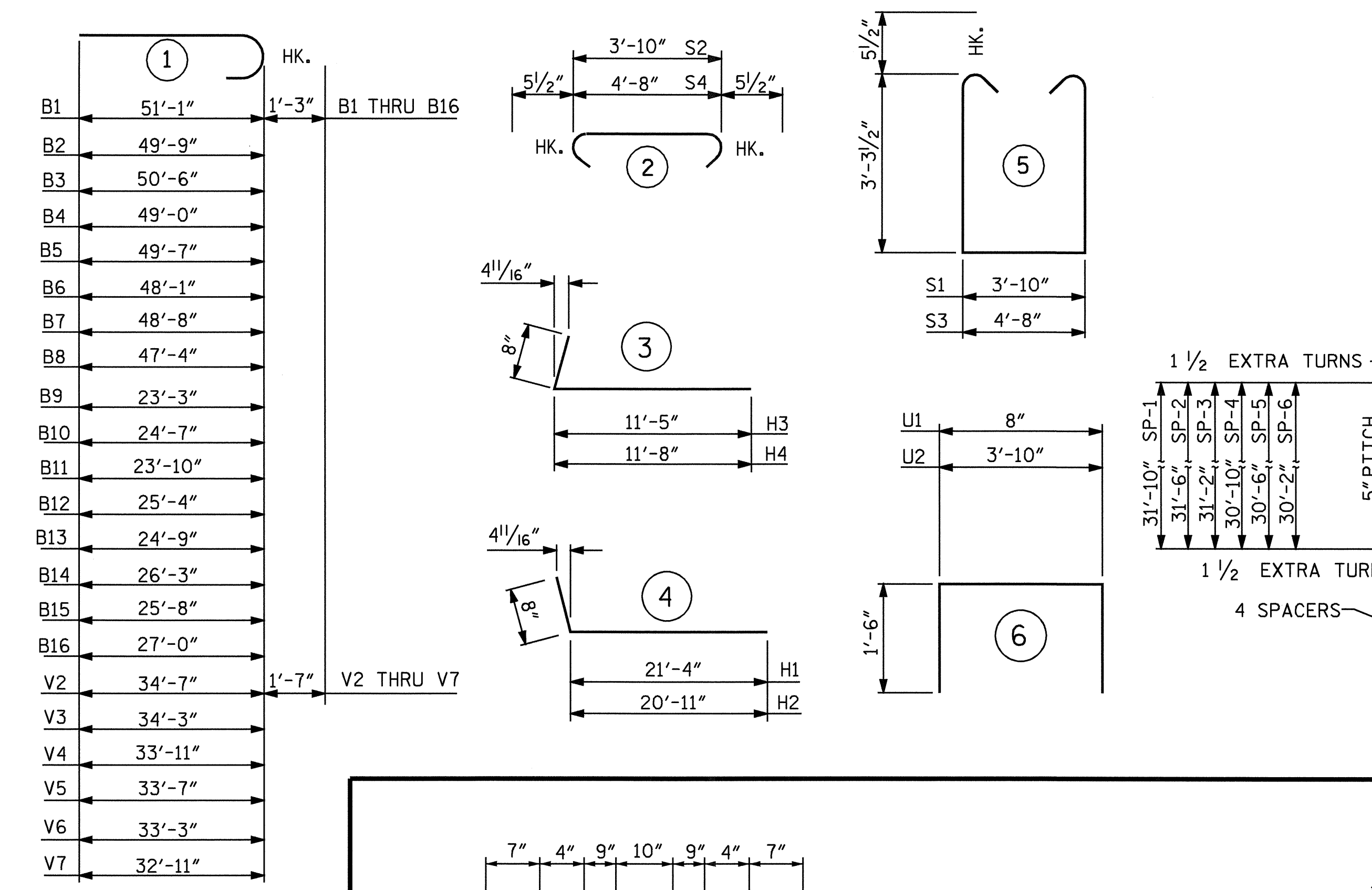
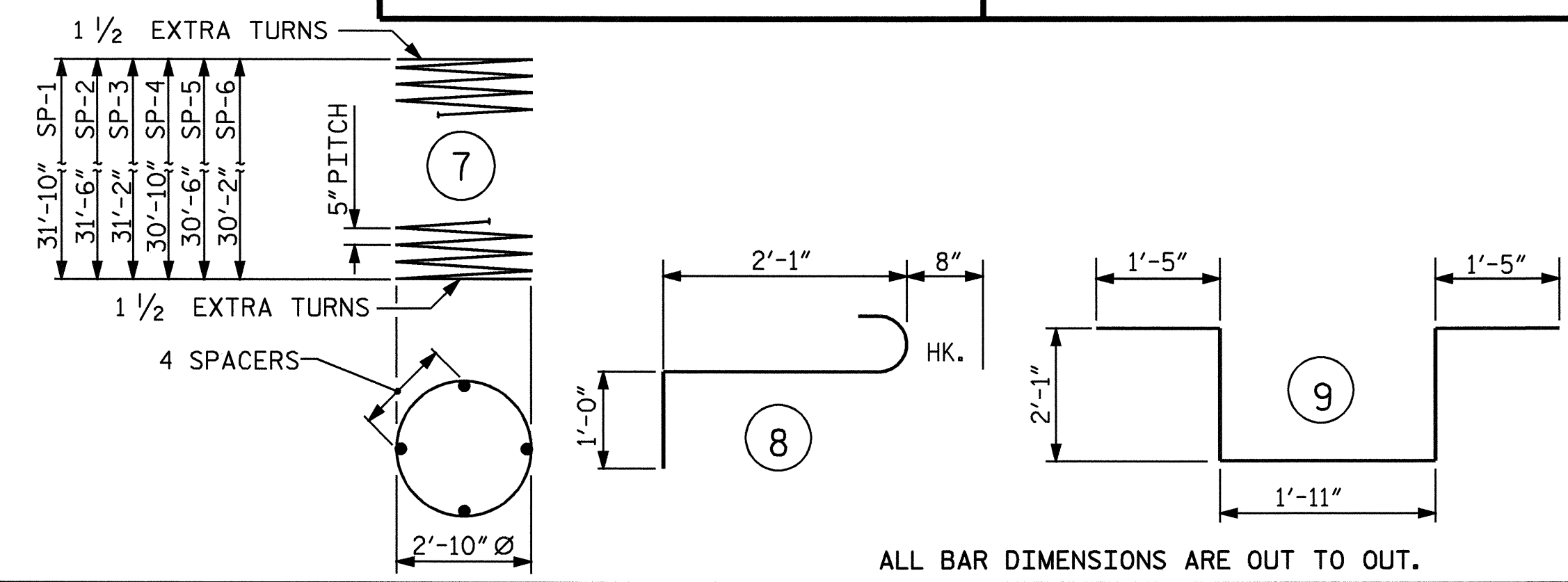


BAR TYPES



BILL OF MATERIAL		BILL OF MATERIAL	
STAGE I		STAGE II	
DRILLED PIER CONCRETE POUR #1 DRILLED PIERS	44.4 CU. YD.	DRILLED PIER CONCRETE POUR #1 DRILLED PIERS	22.9 CU. YD.
3'-6" Ø DRILLED PIERS IN SOIL	111.4 L.F.	3'-6" Ø DRILLED PIERS IN SOIL	57.6 L.F.
3'-6" Ø DRILLED PIERS NOT IN SOIL	13.3 L.F.	3'-6" Ø DRILLED PIERS NOT IN SOIL	6.7 L.F.
CSL TUBES	538.7 L.F.	CSL TUBES	277.3 L.F.
HP 12 X 53 STEEL PILES NO. 1	15 L.F.	HP 12 X 53 STEEL PILES NO. 1	12 L.F.
PILE EXCAVATION IN SOIL	15 L.F.	PILE EXCAVATION IN SOIL	12 L.F.

BILL OF MATERIAL						BILL OF MATERIAL					
STAGE I						STAGE II					
BAR	NO.	SIZE	TYPE	LENGTH	WEIGHT	BAR	NO.	SIZE	TYPE	LENGTH	WEIGHT
B1	2	9	1	52'-4"	356	B9	2	9	1	24'-6"	167
B2	2	9	1	51'-0"	347	B10	2	9	1	25'-10"	176
B3	2	9	1	51'-9"	352	B11	2	9	1	25'-1"	171
B4	2	9	1	50'-3"	342	B12	2	9	1	26'-7"	181
B5	2	9	1	50'-10"	346	B13	2	9	1	26'-0"	177
B6	2	9	1	49'-4"	335	B14	2	9	1	27'-6"	187
B7	2	9	1	49'-11"	339	B15	2	9	1	26'-11"	183
B8	2	9	1	48'-7"	330	B16	2	9	1	28'-3"	192
B17	12	5	STR	27'-7"	345	B18	12	5	STR	15'-7"	195
B19	32	4	STR	2'-9"	59	B19	8	4	STR	2'-9"	15
H1	13	5	4	22'-0"	298	H3	13	5	3	12'-1"	164
H2	13	5	4	21'-7"	293	H4	13	5	3	12'-4"	167
K1	28	4	STR	27'-1"	507	K2	28	4	STR	14'-2"	265
K3	4	5	STR	4'-0"	17	K3	4	5	STR	4'-0"	17
S1	34	5	5	11'-4"	402	S1	19	5	5	11'-4"	225
S2	34	5	2	4'-9"	168	S2	19	5	2	4'-9"	94
S3	1	5	5	12'-2"	13	S3	1	5	5	12'-2"	13
S4	1	5	2	5'-7"	6	S4	1	5	2	5'-7"	6
S5	3	6	8	3'-9"	17	S5	3	6	8	3'-9"	17
S6	1	6	9	8'-11"	13	S6	1	6	9	8'-11"	13
U1	44	4	6	3'-8"	108	U1	21	4	6	3'-8"	51
U2	12	4	6	6'-10"	55	U2	3	4	6	6'-10"	14
V1	88	5	STR	9'-2"	841	V1	42	5	STR	9'-2"	402
V4	22	11	1	35'-6"	4149	V2	22	11	1	36'-2"	4227
V5	22	11	1	35'-2"	4110	V3	22	11	1	35'-10"	4188
V6	22	11	1	34'-10"	4072	V8	20	5	STR	10'-8"	223
V7	22	11	1	34'-6"	4033	V9	12	5	STR	10'-5"	130
V10	10	5	STR	11'-1"	116						
V11	10	5	STR	10'-0"	104						
V12	10	5	STR	10'-3"	107						
V13	10	5	STR	10'-5"	109						
V14	12	5	STR	10'-8"	134						



ALL BAR DIMENSIONS ARE OUT TO OUT.

TOTAL BILL OF MATERIAL	
REINFORCING STEEL	34683 LBS.
SPIRAL COLUMN REINFORCING STEEL	4237 LBS.
CLASS A CONCRETE	74.3 C.Y.
DRILLED PIER CONCRETE	67.3 C.Y.
3'-6" Ø DRILLED PIERS IN SOIL	169.0 L.F.
3'-6" Ø DRILLED PIERS NOT IN SOIL	20.0 L.F.
CSL TUBES	816.0 L.F.
HP 12 X 53 STEEL PILES	27 L.F.
SPT TESTING	6 EACH
SID INSPECTION	6 EACH
CROSSHOLE SONIC LOGGING	2 EACH
PILE EXCAVATION IN SOIL	27 L.F.

REINFORCING STEEL						REINFORCING STEEL					
SP-3	1	**	7	680'-7"	710	SP-1	1	**	7	694'-7"	724
SP-4	1	**	7	673'-7"	703	SP-2	1	**	7	687'-7"	717
SP-5	1	**	7	666'-7"	695						
SP-6	1	**	7	659'-7"	688						
SPIRAL COLUMN REINFORCING STEEL						SPIRAL COLUMN REINFORCING STEEL					
2796 LBS.						1441 LBS.					
CLASS A CONCRETE						CLASS A CONCRETE					
POUR #2 CAP & LOWER WING						POUR #2 CAP & LOWER WING					
29.6 CU. YD.						17.3 CU. YD.					
POUR #3 BACKWALL & UPPER WING						POUR #3 BACKWALL & UPPER WING					
16.8 CU. YD.						10.6 CU. YD.					
TOTAL CLASS A CONCRETE						TOTAL CLASS A CONCRETE					
46.4 CU. YD.						27.9 CU. YD.					

** THE DRILLED PIER SPIRAL REINFORCING STEEL SHALL BE W31 OR D-31 COLD DRAWN WIRE OR #5 PLAIN OR DEFORMED BAR.

PROJECT NO. B-3375
WAKE COUNTY
 STATION: 43+81.84 -L-

SHEET 5 OF 5

STATE OF NORTH CAROLINA
 DEPARTMENT OF TRANSPORTATION
 RALEIGH

SUBSTRUCTURE
 END BENT #1

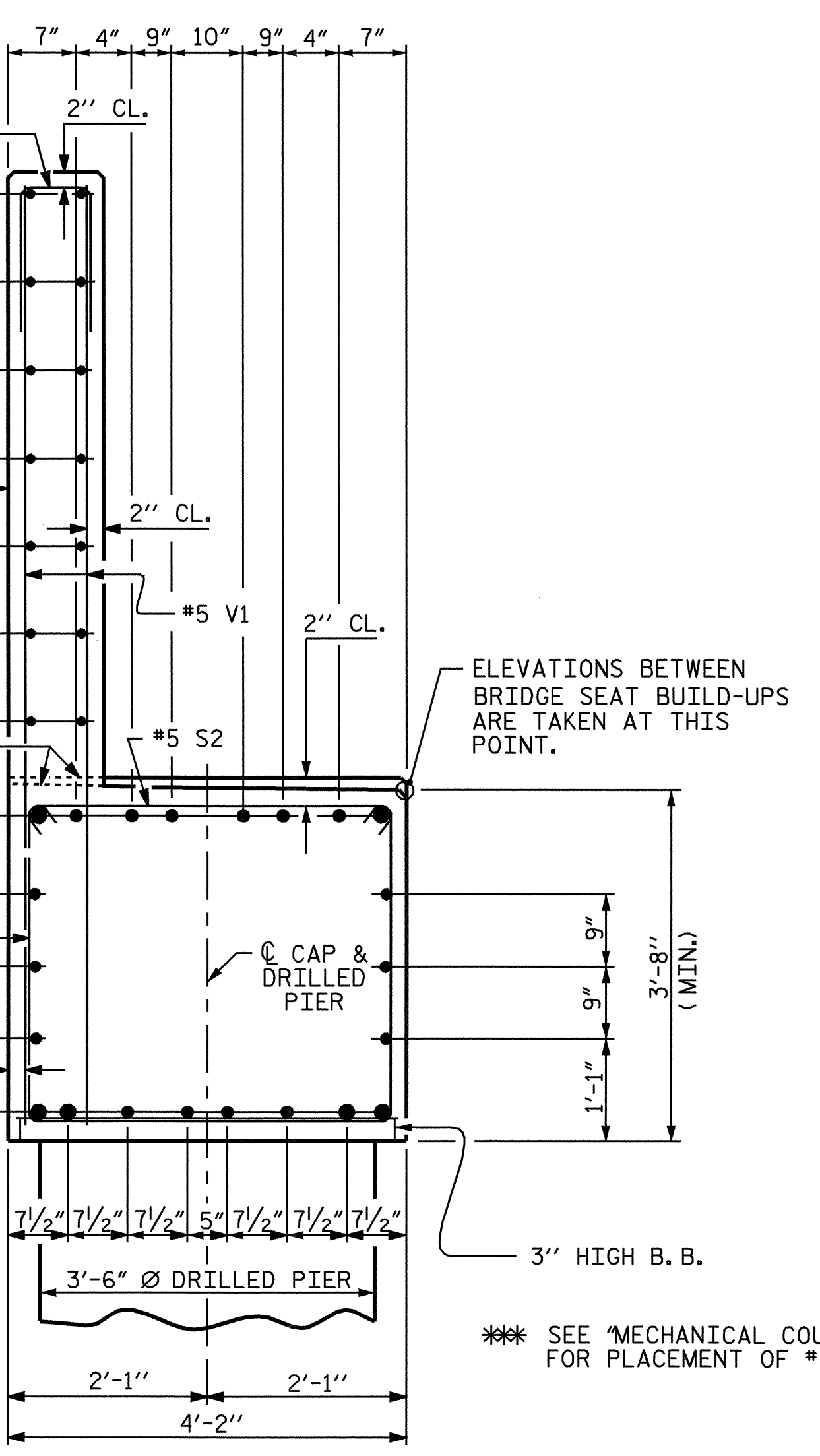


REVISIONS						SHEET NO.	
NO.	BY:	DATE:	NO.	BY:	DATE:	S-29	
1			3			TOTAL SHEETS	31
2			4				

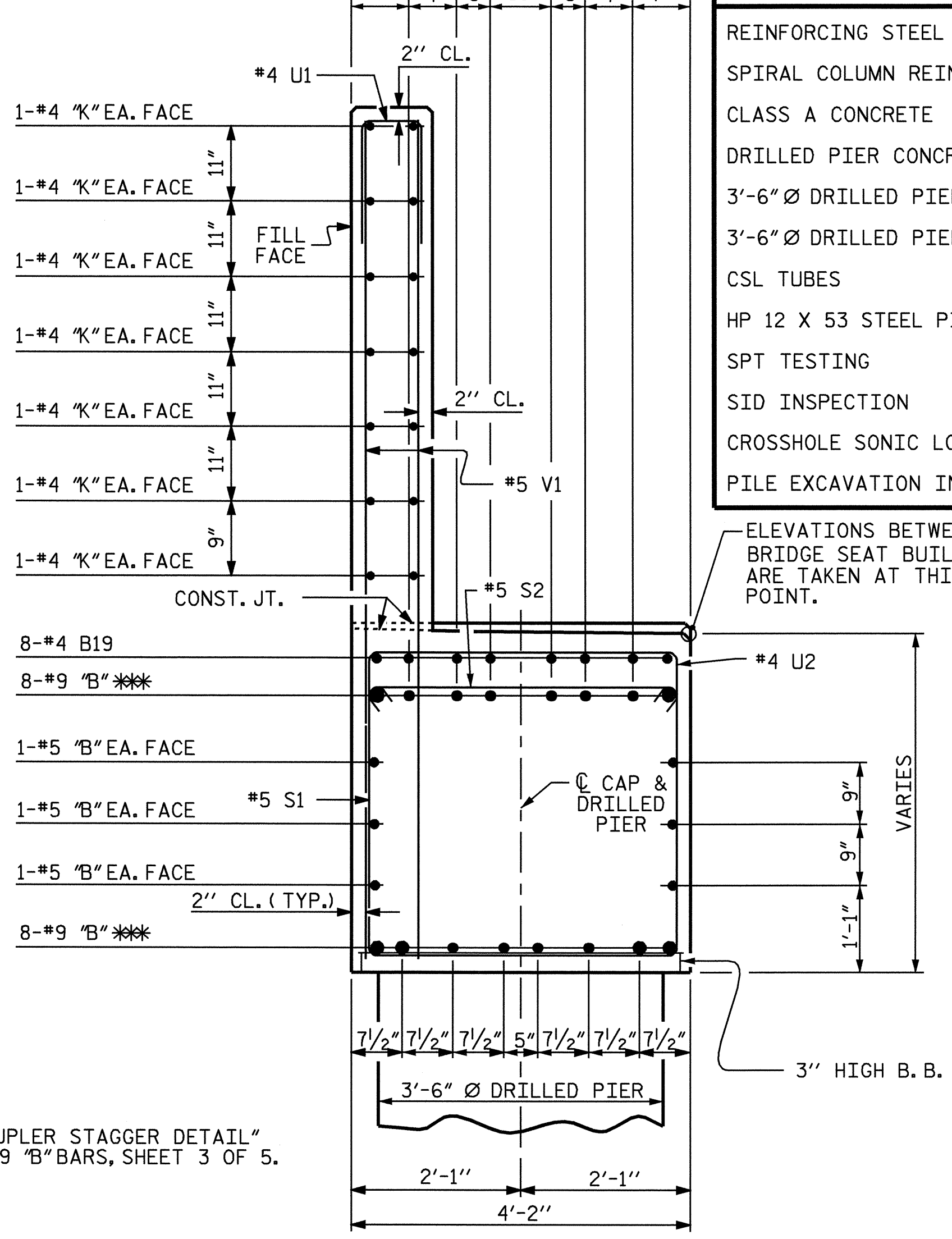
STR. #1

DRAWN BY : PEGGY ADKINS DATE : 9-04
 CHECKED BY : W. D. CRUTCHER DATE : 11-04

SECTION A-A



** SEE "MECHANICAL COUPLER STAGGER DETAIL" FOR PLACEMENT OF #9 "B" BARS, SHEET 3 OF 5.



SECTION B-B