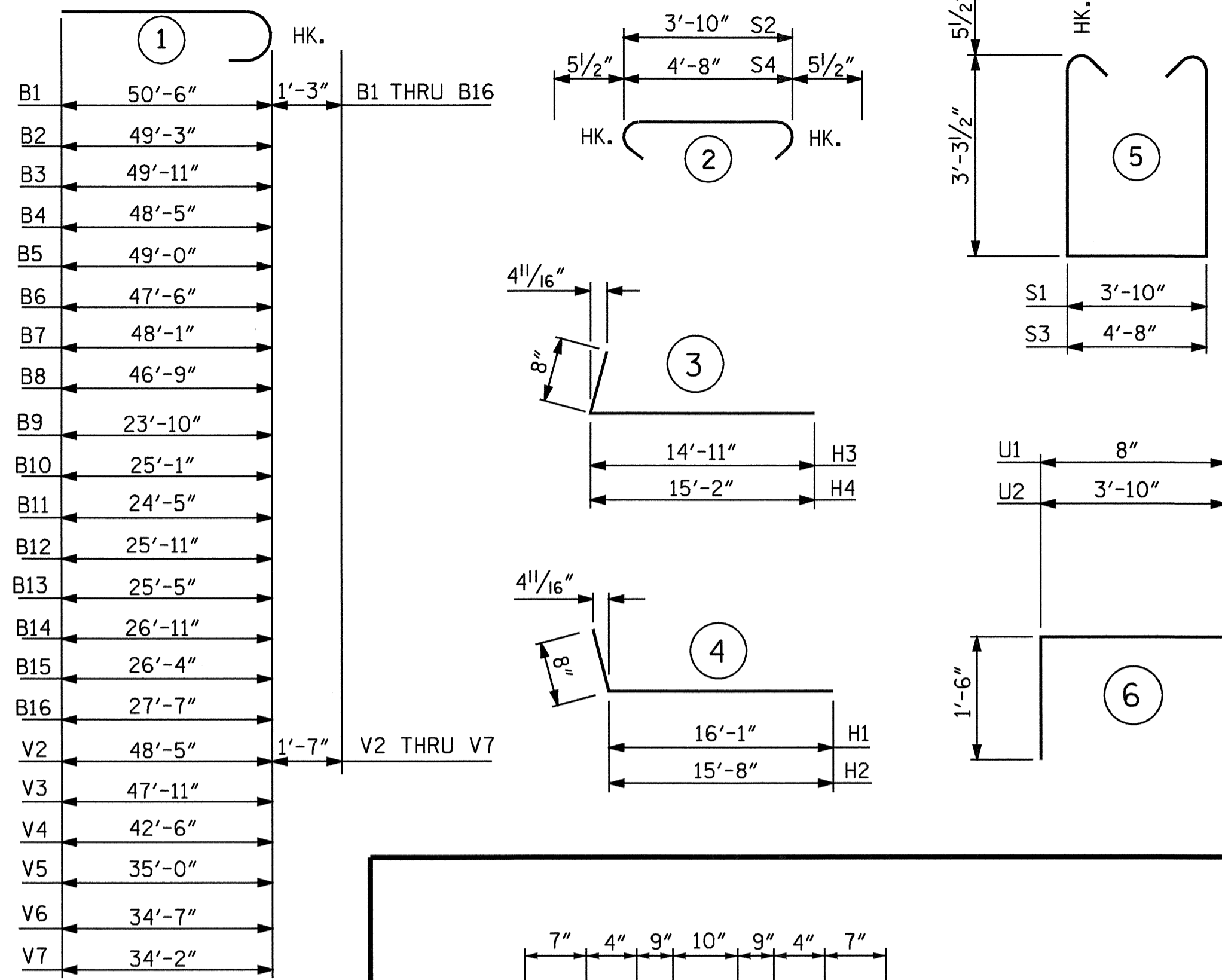
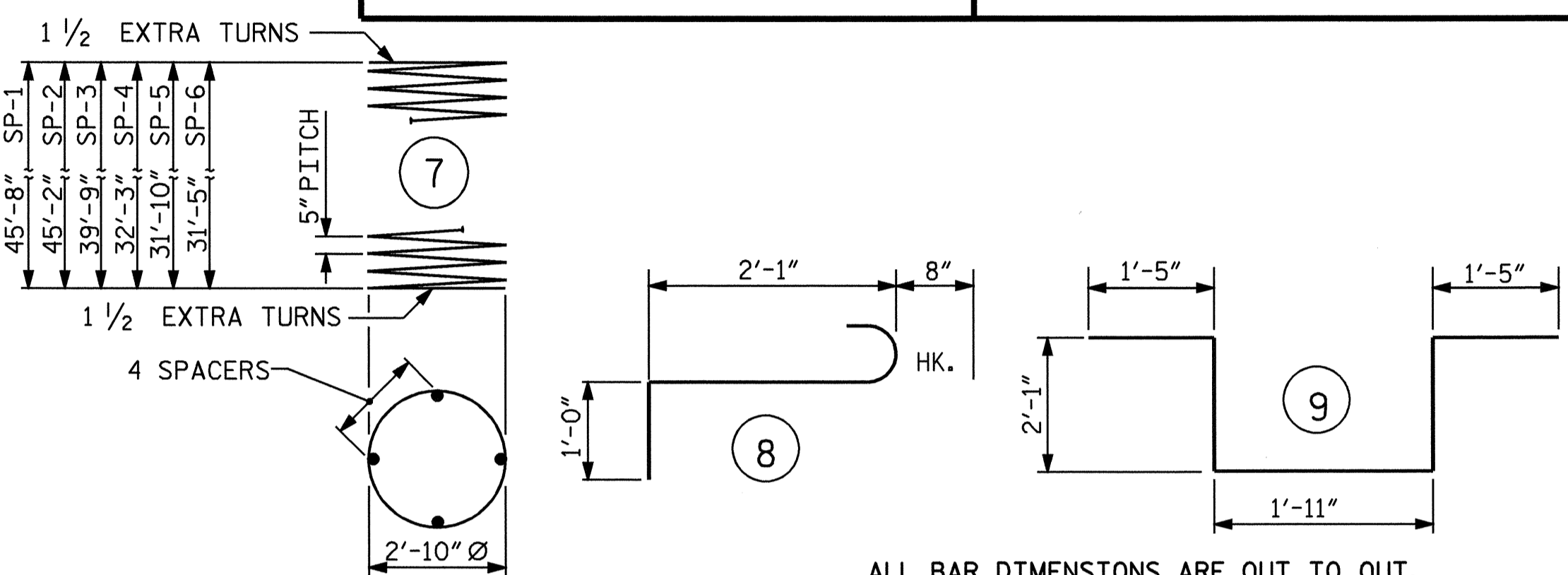


BAR TYPES



BILL OF MATERIAL			BILL OF MATERIAL			BILL OF MATERIAL					BILL OF MATERIAL						
STAGE I			STAGE II			STAGE I					STAGE II						
DRILLED PIER CONCRETE POUR #1 DRILLED PIERS	48.9 CU. YD.		DRILLED PIER CONCRETE POUR #1 DRILLED PIERS	32.7 CU. YD.		BAR	NO.	SIZE	TYPE	LENGTH	WEIGHT	BAR	NO.	SIZE	TYPE	LENGTH	WEIGHT
3'-6" Ø DRILLED PIERS IN SOIL	124.0 L.F.		3'-6" Ø DRILLED PIERS IN SOIL	85.1 L.F.		B1	2	9	1	51'-9"	352	B9	2	9	1	25'-1"	171
3'-6" Ø DRILLED PIERS NOT IN SOIL	13.3 L.F.		3'-6" Ø DRILLED PIERS NOT IN SOIL	6.7 L.F.		B2	2	9	1	50'-6"	343	B10	2	9	1	26'-4"	179
CSL TUBES	589.2 L.F.		CSL TUBES	387.2 L.F.		B3	2	9	1	51'-2"	348	B11	2	9	1	25'-8"	175
HP 12 X 53 STEEL PILES NO. 1	15 L.F.		HP 12 X 53 STEEL PILES NO. 1	15 L.F.		B4	2	9	1	49'-8"	338	B12	2	9	1	27'-2"	185
PILE EXCAVATION IN SOIL	15 L.F.		PILE EXCAVATION IN SOIL	15 L.F.		B5	2	9	1	50'-3"	342	B13	2	9	1	26'-8"	181
						B6	2	9	1	48'-9"	332	B14	2	9	1	28'-2"	192
						B7	2	9	1	49'-4"	335	B15	2	9	1	27'-7"	188
						B8	2	9	1	48'-0"	326	B16	2	9	1	28'-10"	196
						B17	12	5	STR	27'-4"	342	B18	12	5	STR	15'-11"	199
						B19	32	4	STR	2'-9"	59	B19	8	4	STR	2'-9"	15
						H3	13	5	3	15'-7"	211	H1	13	5	4	16'-9"	227
						H4	13	5	3	15'-10"	215	H2	13	5	4	16'-4"	221
						K1	28	4	STR	25'-8"	480	K2	28	4	STR	15'-4"	287
						K3	4	5	STR	4'-0"	17	K3	4	5	STR	4'-0"	17
						S1	39	5	5	11'-4"	461	S1	23	5	5	11'-4"	272
						S2	39	5	2	4'-9"	193	S2	23	5	2	4'-9"	114
						S3	1	5	5	12'-2"	13	S3	1	5	5	12'-2"	13
						S4	1	5	2	5'-7"	6	S4	1	5	2	5'-7"	6
						S5	3	6	8	3'-9"	17	S5	3	6	8	3'-9"	17
						S6	1	6	9	8'-11"	13	S6	1	6	9	8'-11"	13
						U1	41	4	6	3'-8"	100	U1	24	4	6	3'-8"	59
						U2	12	4	6	6'-10"	55	U2	3	4	6	6'-10"	14
						V1	82	5	STR	9'-5"	805	V1	48	5	STR	9'-5"	471
						V4	22	11	1	44'-1"	5153	V2	22	11	1	50'-0"	5844
						V5	22	11	1	36'-7"	4276	V3	22	11	1	49'-6"	5786
						V6	22	11	1	36'-2"	4227	V11	20	5	STR	11'-1"	231
						V7	22	11	1	35'-9"	4179	V12	10	5	STR	11'-4"	118
						V8	20	5	STR	11'-4"	236	V13	10	5	STR	11'-8"	122
						V9	10	5	STR	11'-6"	120						
						V10	10	5	STR	11'-9"	123						



ALL BAR DIMENSIONS ARE OUT TO OUT.

TOTAL BILL OF MATERIAL

REINFORCING STEEL	39530 LBS.
SPIRAL COLUMN REINFORCING STEEL	5114 LBS.
CLASS A CONCRETE	75.4 C.Y.
DRILLED PIER CONCRETE	81.6 C.Y.
3'-6" Ø DRILLED PIERS IN SOIL	209.1 L.F.
3'-6" Ø DRILLED PIERS NOT IN SOIL	20.0 L.F.
CSL TUBES	976.4 L.F.
HP 12 X 53 STEEL PILES	30 L.F.
SPT TESTING	6 EACH
SID INSPECTION	6 EACH
CROSSHOLE SONIC LOGGING	2 EACH
PILE EXCAVATION IN SOIL	30 L.F.

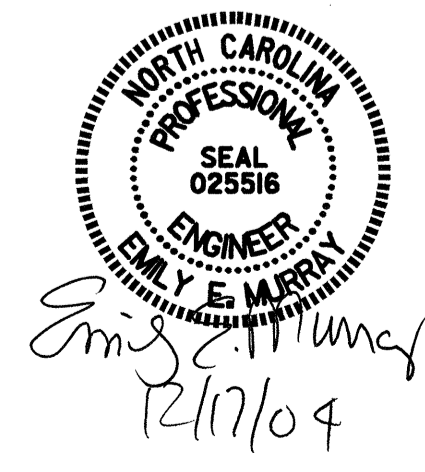
REINFORCING STEEL 24027 LBS.						REINFORCING STEEL 15513 LBS.					
SP-3	1	**	7	860'-10"	898	SP-1	1	**	7	985'-0"	1027
SP-4	1	**	7	703'-4"	734	SP-2	1	**	7	974'-6"	1016
SP-5	1	**	7	694'-7"	724						
SP-6	1	**	7	685'-10"	715						
SPIRAL COLUMN REINFORCING STEEL 3071 LBS.						SPIRAL COLUMN REINFORCING STEEL 2043 LBS.					
CLASS A CONCRETE POUR #2 CAP & LOWER WING 29.7 CU. YD.						CLASS A CONCRETE POUR #2 CAP & LOWER WING 18.7 CU. YD.					
POUR #3 BACKWALL & UPPER WING 15.5 CU. YD.						POUR #3 BACKWALL & UPPER WING 11.5 CU. YD.					
TOTAL CLASS A CONCRETE 45.2 CU. YD.						TOTAL CLASS A CONCRETE 30.2 CU. YD.					

** THE DRILLED PIER SPIRAL REINFORCING STEEL SHALL BE W31 OR D-31 COLD DRAWN WIRE OR #5 PLAIN OR DEFORMED BAR.

PROJECT NO. B-3375
WAKE COUNTY
 STATION: 43+81.84 -L-

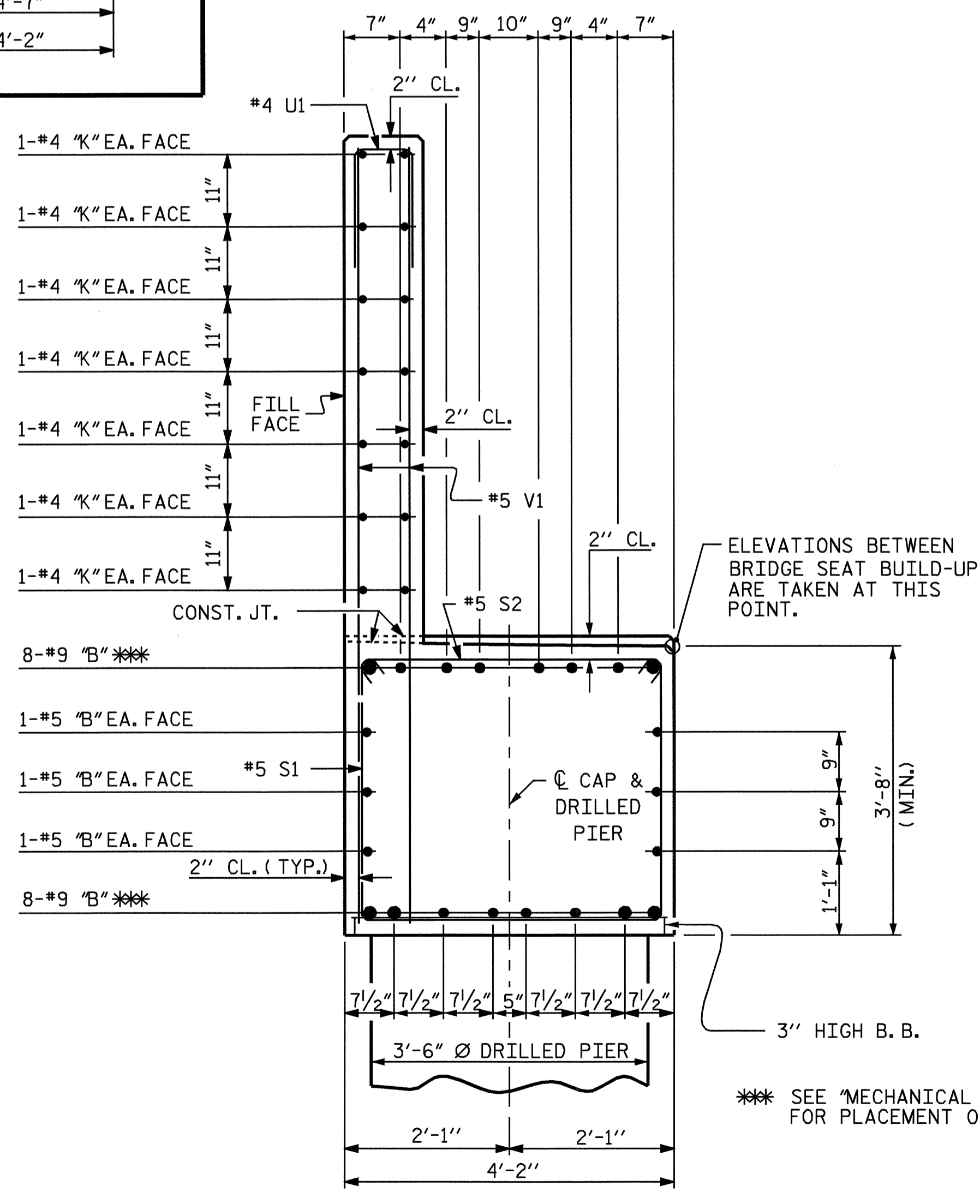
SHEET 5 OF 5

REVISIONS						SHEET NO. S-34	
NO.	BY:	DATE:	NO.	BY:	DATE:	TOTAL SHEETS 37	
1			3				
2			4				

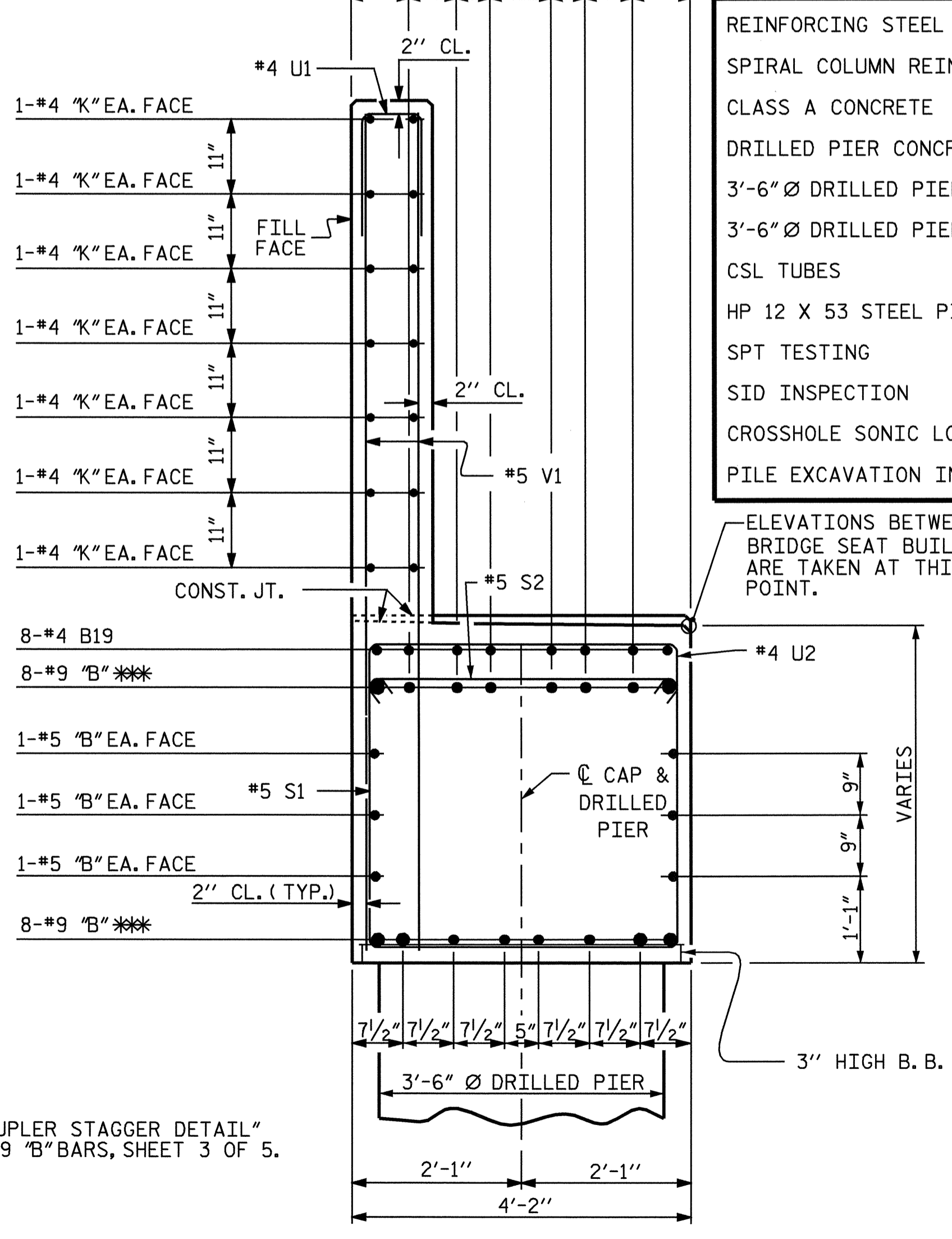


SUBSTRUCTURE
 END BENT #2

STR. #1



SECTION A-A



SECTION B-B

*** SEE "MECHANICAL COUPLER STAGGER DETAIL" FOR PLACEMENT OF #9 "B" BARS, SHEET 3 OF 5.

DRAWN BY : PEGGY ADKINS DATE : 9-04
 CHECKED BY : W. D. CRUTCHER DATE : 11-04