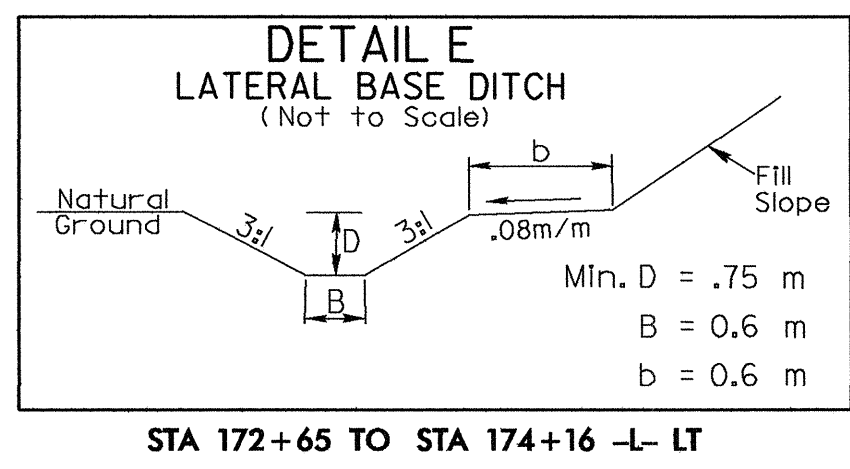


REVISIONS	

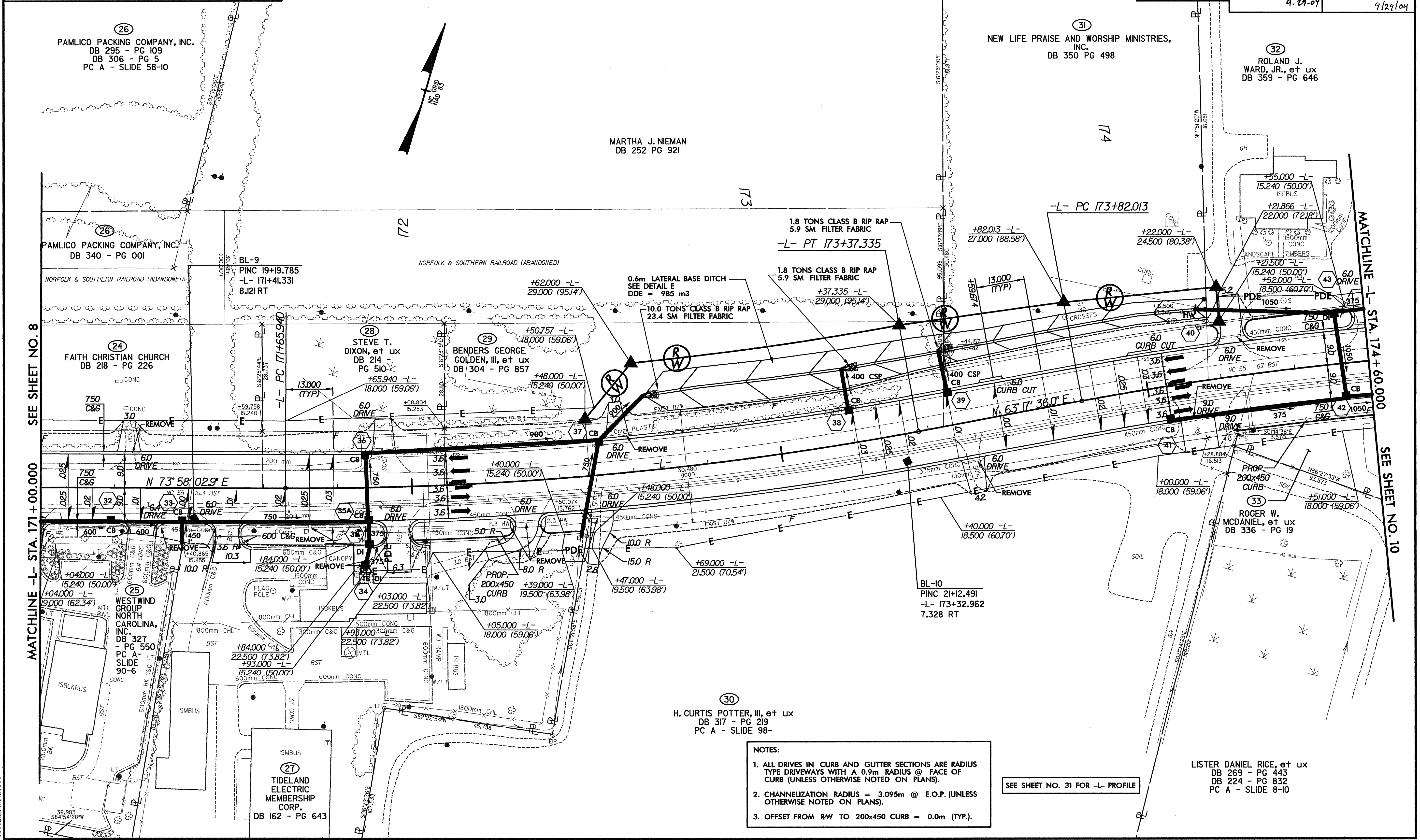
-L-
 PI Sta 172+51.886
 $\Delta = 10^\circ 40' 26.8" (LT)$
 L = 171.395
 T = 85.946
 R = 920.000
 S.E. = .03
 R'OFF = 39.0

-L-
 PI Sta 174+62.032
 $\Delta = 10^\circ 16' 30.8" (RT)$
 L = 159.609
 T = 80.019
 R = 890.000
 S.E. = .03
 R'OFF = 39.0



GREENHORNE & O'MARA, INC.
 5565 CENTERVIEW DRIVE, SUITE 107
 RALEIGH, NORTH CAROLINA 27606
 (919) 851-1919

PROJECT REFERENCE NO. R-2539C		SHEET NO. 9	
R/W SHEET NO.			
ROADWAY DESIGN ENGINEER NORTH CAROLINA PROFESSIONAL SEAL MANNA G. KEELER 9-29-04		HYDRAULICS ENGINEER NORTH CAROLINA PROFESSIONAL SEAL TRACEY H. BALLEW 9/29/04	
CONST. REV.			
R/W REV.			



- NOTES:
1. ALL DRIVES IN CURB AND GUTTER SECTIONS ARE RADIUS TYPE DRIVEWAYS WITH A 0.9m RADIUS @ FACE OF CURB (UNLESS OTHERWISE NOTED ON PLANS).
 2. CHANNELIZATION RADIUS IS 3.095m @ E.O.P. (UNLESS OTHERWISE NOTED ON PLANS).
 3. OFFSET FROM RW TO 200x450 CURB = 0.0m (TYP.).

SEE SHEET NO. 31 FOR -L- PROFILE

LISTER DANIEL RICE, et ux
 DB 269 - PG 443
 DB 224 - PG 832
 PC A - SLIDE 8-10