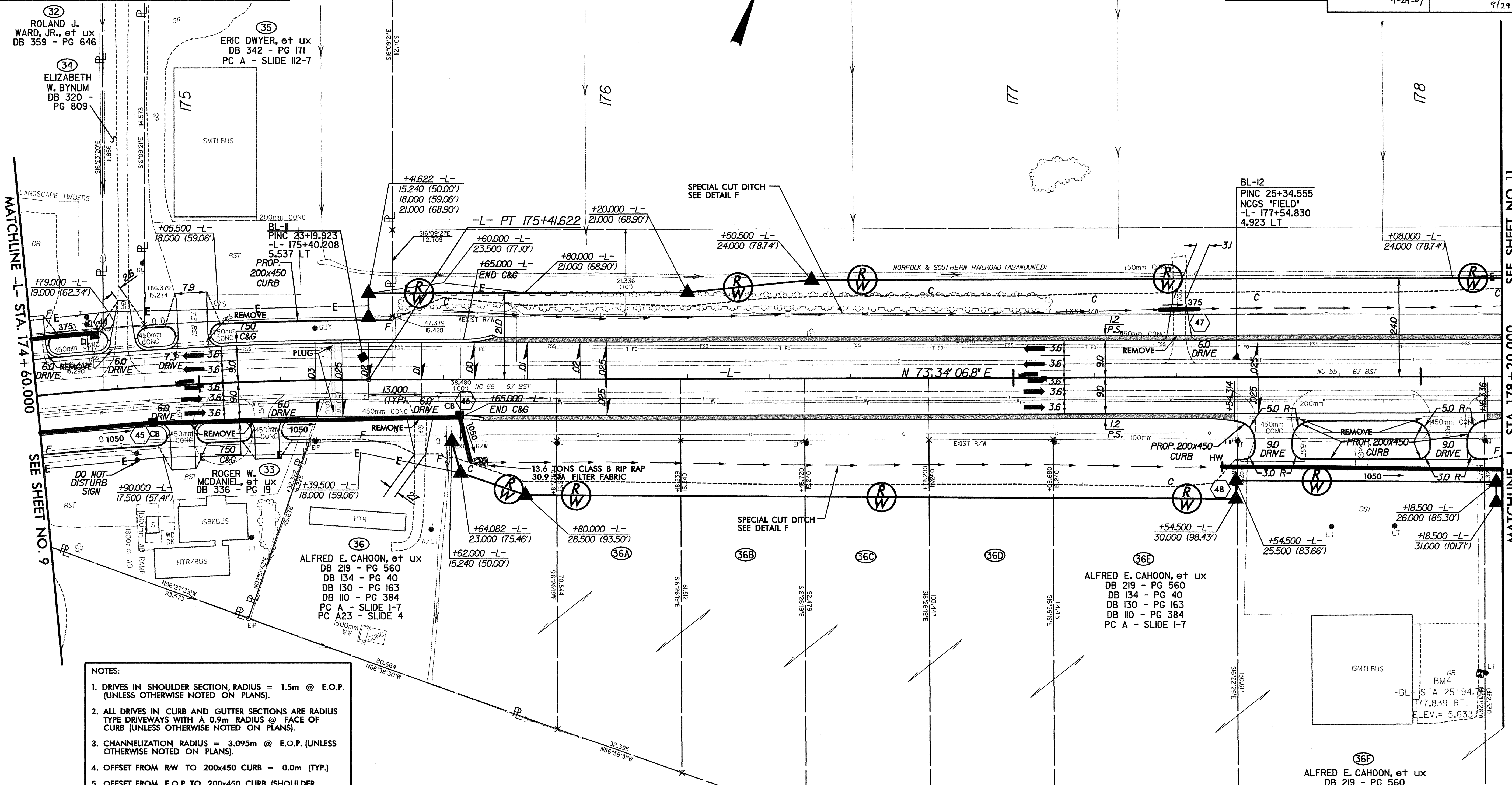


REVISIONS

GREENHORNE & O'MARA, INC.
 5565 CENTERVIEW DRIVE, SUITE 107
 RALEIGH, NORTH CAROLINA 27606
 (919) 851-1919

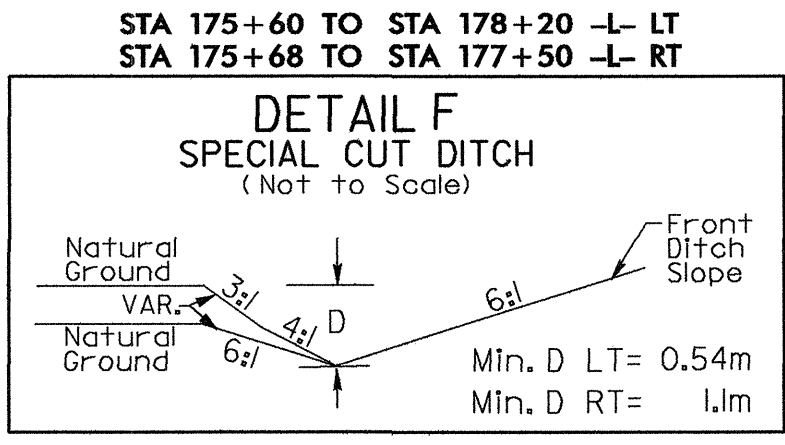
PROJECT REFERENCE NO. R-2539C		SHEET NO. 10	
R/W SHEET NO.			
ROADWAY DESIGN ENGINEER HERMAN L. IRELAND, et ux SEAL 18505 9-29-04		HYDRAULICS ENGINEER WACEY H. BAILEY SEAL 24451 9/29/04	
CONST. REV.			
R/W REV.			



- NOTES:**
1. DRIVES IN SHOULDER SECTION, RADIUS = 1.5m @ E.O.P. (UNLESS OTHERWISE NOTED ON PLANS).
 2. ALL DRIVES IN CURB AND GUTTER SECTIONS ARE RADIUS TYPE DRIVEWAYS WITH A 0.9m RADIUS @ FACE OF CURB (UNLESS OTHERWISE NOTED ON PLANS).
 3. CHANNELIZATION RADIUS = 3.095m @ E.O.P. (UNLESS OTHERWISE NOTED ON PLANS).
 4. OFFSET FROM RW TO 200x450 CURB = 0.0m (TYP.)
 5. OFFSET FROM E.O.P. TO 200x450 CURB (SHOULDER SECTION) = 1.8m (TYP.)

LISTER DANIEL RICE, et ux
 DB 269 - PG 443
 DB 224 - PG 832
 PC A - SLIDE 8-10

-L-
 PI Sta 174+62.032
 $\Delta = 10' 16' 30.8''$ (RT)
 L = 159.609
 T = 80.019
 R = 890.000
 S.E. = .03
 R'OFF = 39.0



SEE SHEET NO. 32 FOR -L- PROFILE