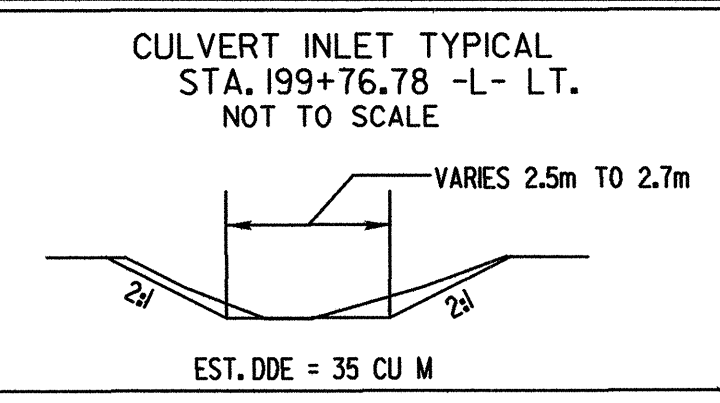
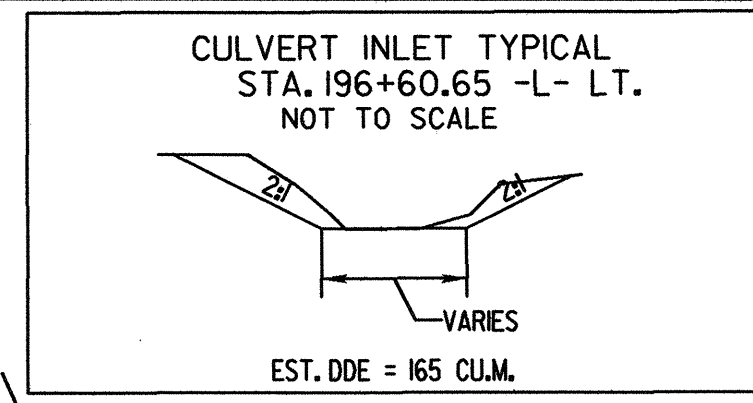


| REVISIONS |
|-----------|
| |
| |
| |



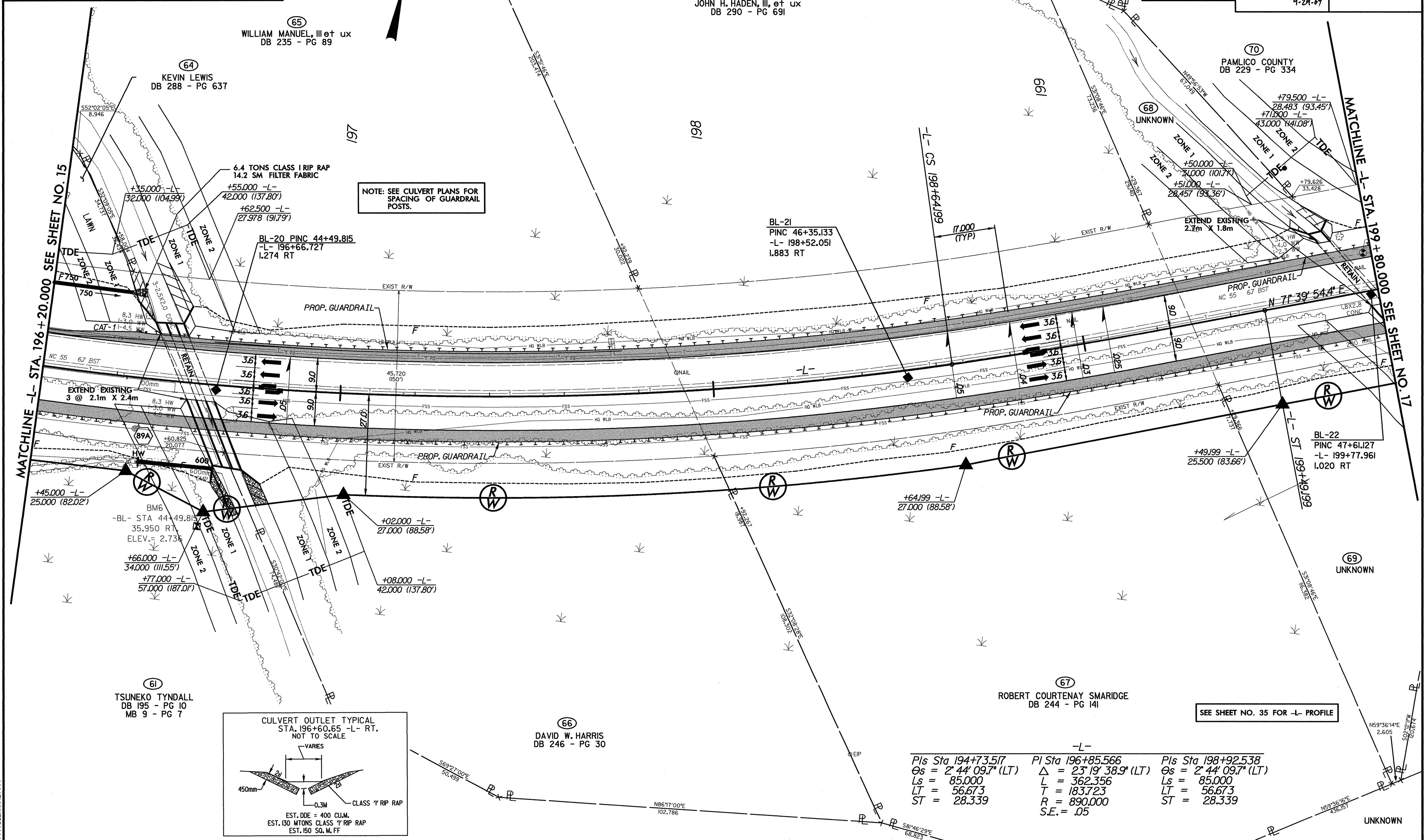
GREENHORNE & O'MARA, INC.
5565 CENTERVIEW DRIVE, SUITE 107
RALEIGH, NORTH CAROLINA 27606
(919) 851-1919

METRIC

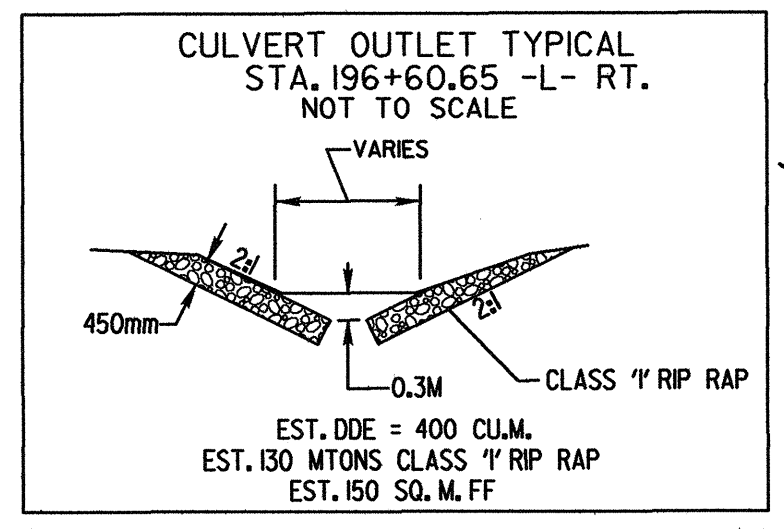
5 0 10

CONST. REV.
R/W REV.

| | |
|---|--|
| PROJECT REFERENCE NO. R-2539C | SHEET NO. 16 |
| R/W SHEET NO. | |
| ROADWAY DESIGN ENGINEER NORTH CAROLINA PROFESSIONAL SEAL 18506 RICHARD A. MOORE | HYDRAULICS ENGINEER NORTH CAROLINA PROFESSIONAL SEAL 026603 RICHARD A. MOORE |
| 9-29-04 | |



NOTE: SEE CULVERT PLANS FOR SPACING OF GUARDRAIL POSTS.



| Sta | PI | Sta | PI | Sta | PI |
|---------------------------------|--------------------------------|---------------------------------|----|-----|----|
| 194+73.517 | 196+85.566 | 198+92.538 | | | |
| $\theta_s = 2' 44' 09.7''$ (LT) | $\Delta = 23' 19' 38.9''$ (LT) | $\theta_s = 2' 44' 09.7''$ (LT) | | | |
| $L_s = 85.000$ | $L = 362.356$ | $L_s = 85.000$ | | | |
| $LT = 56.673$ | $T = 183.723$ | $LT = 56.673$ | | | |
| $ST = 28.339$ | $R = 890.000$ | $ST = 28.339$ | | | |
| | $S.E. = .05$ | | | | |

SEE SHEET NO. 35 FOR -L- PROFILE