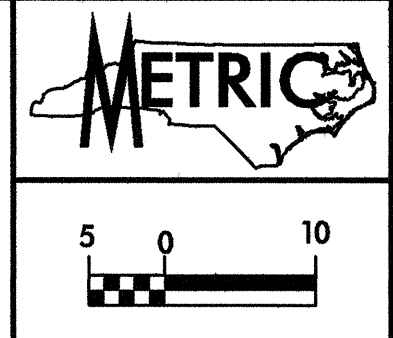
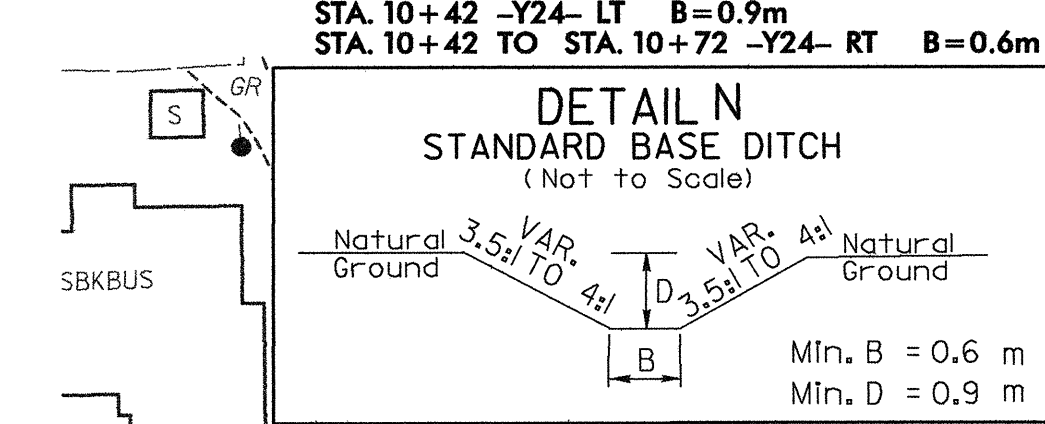


REVISIONS

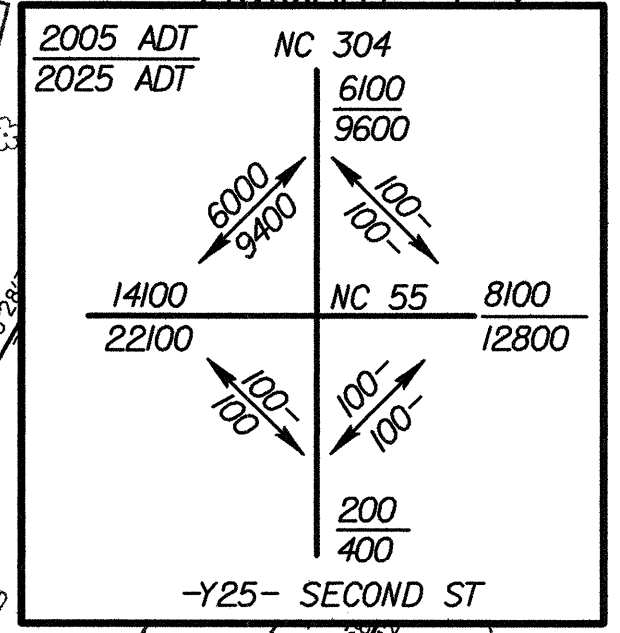
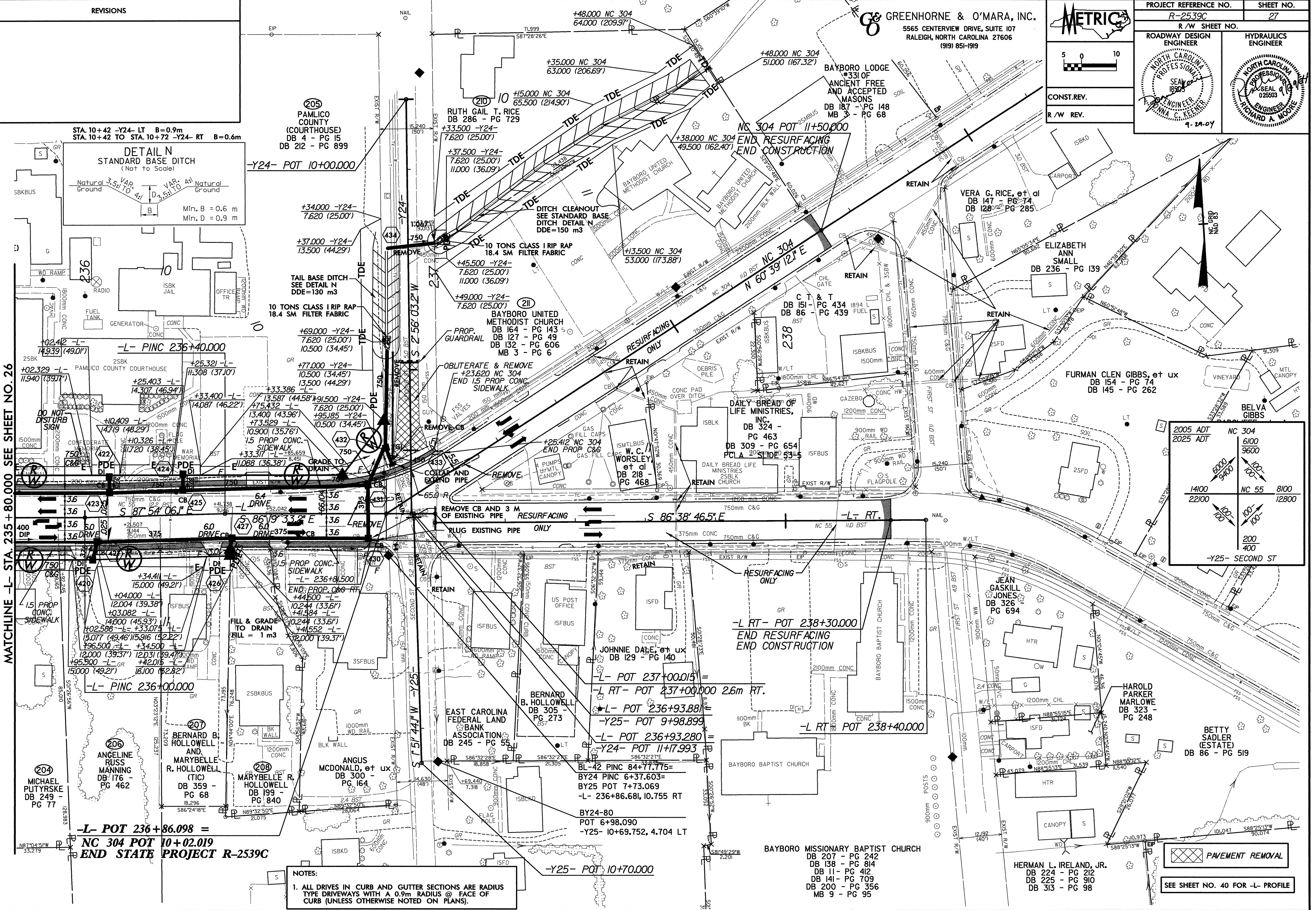
GREENHORNE & O'MARA, INC.  
5565 CENTERVIEW DRIVE, SUITE 107  
RALEIGH, NORTH CAROLINA 27606  
(919) 851-1919



PROJECT REFERENCE NO. R-2539C	SHEET NO. 27
R/W SHEET NO.	
ROADWAY DESIGN ENGINEER SEAN G. KEENER NORTH CAROLINA PROFESSIONAL ENGINEER NO. 11000	HYDRAULICS ENGINEER RICHARD A. MOORE NORTH CAROLINA PROFESSIONAL ENGINEER NO. 025603
CONST. REV.	
R/W REV.	



MATCHLINE -L- STA. 235 + 80.000 SEE SHEET NO. 26



-L- POT 236 + 86.098 =  
NC 304 POT 10 + 02.019  
END STATE PROJECT R-2539C

NOTES:  
1. ALL DRIVES IN CURB AND GUTTER SECTIONS ARE RADIUS TYPE DRIVEWAYS WITH A 0.9m RADIUS @ FACE OF CURB (UNLESS OTHERWISE NOTED ON PLANS).

PAVEMENT REMOVAL  
SEE SHEET NO. 40 FOR -L- PROFILE