

REVISIONS

BENNIE RAY PAUL  
DB 199 - PG 444

**GREENHORNE & O'MARA, INC.**  
5565 CENTERVIEW DRIVE, SUITE 107  
RALEIGH, NORTH CAROLINA 27606  
(919) 851-1919

**METRIC**

CONST. REV.  
R / W REV.

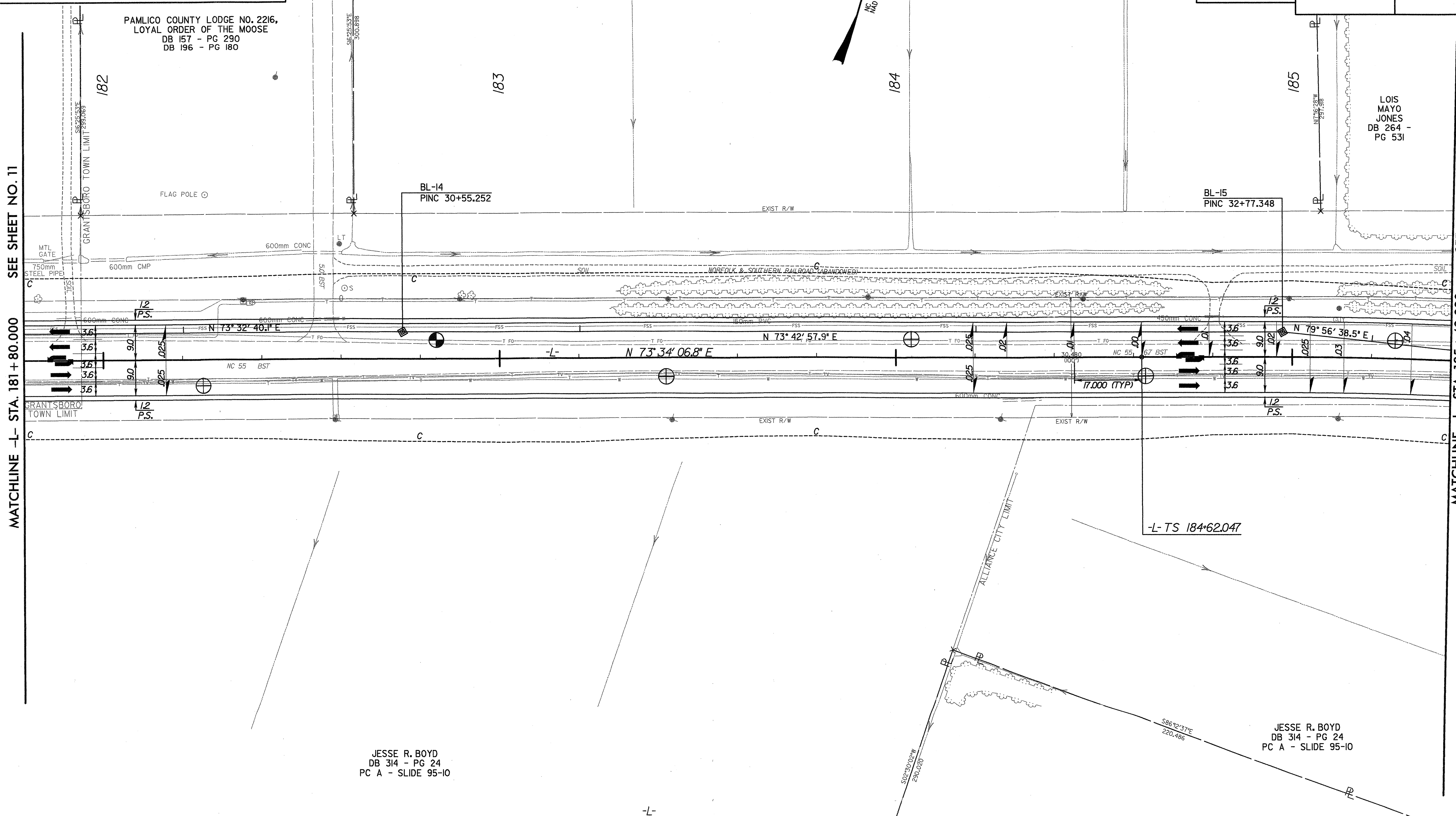
PROJECT REFERENCE NO. R-2539C	SHEET NO. 12
R / W SHEET NO.	
ROADWAY DESIGN ENGINEER	HYDRAULICS ENGINEER
<b>PRELIMINARY PLANS</b> DO NOT USE FOR CONSTRUCTION <b>INCOMPLETE PLANS</b> DO NOT USE FOR R/W ACQUISITION	

PAMLICO COUNTY LODGE NO. 2216,  
LOYAL ORDER OF THE MOOSE  
DB 157 - PG 290  
DB 196 - PG 180

LOIS MAYO JONES  
DB 264 -  
PG 531

MATCHLINE -L- STA. 181+80.000 SEE SHEET NO. 11

MATCHLINE -L- STA. 185+40.000 SEE SHEET NO. 13



JESSE R. BOYD  
DB 314 - PG 24  
PC A - SLIDE 95-10

JESSE R. BOYD  
DB 314 - PG 24  
PC A - SLIDE 95-10

-L-

PIs Sta 185+41.421 Os = 5° 40' 54.6" (RT) Ls = 119.000 LT = 79.374 ST = 39.704	PI Sta 186+58.383 Δ = 14° 41' 20.7" (RT) L = 153.824 T = 77.336 R = 600.000 S.E. = .07	PIs Sta 187+74.574 Os = 5° 40' 54.6" (RT) Ls = 119.000 LT = 79.374 ST = 39.704
--	---	--

UNKNOWN

SEE SHEET NO. 29 FOR -L- PROFILE