

REVISIONS

-Y5-
 PI Sta 10+94.810
 $\Delta = 7^{\circ} 58' 16.7''$ (LT)
 L = 62.607
 T = 31.354
 R = 450.000

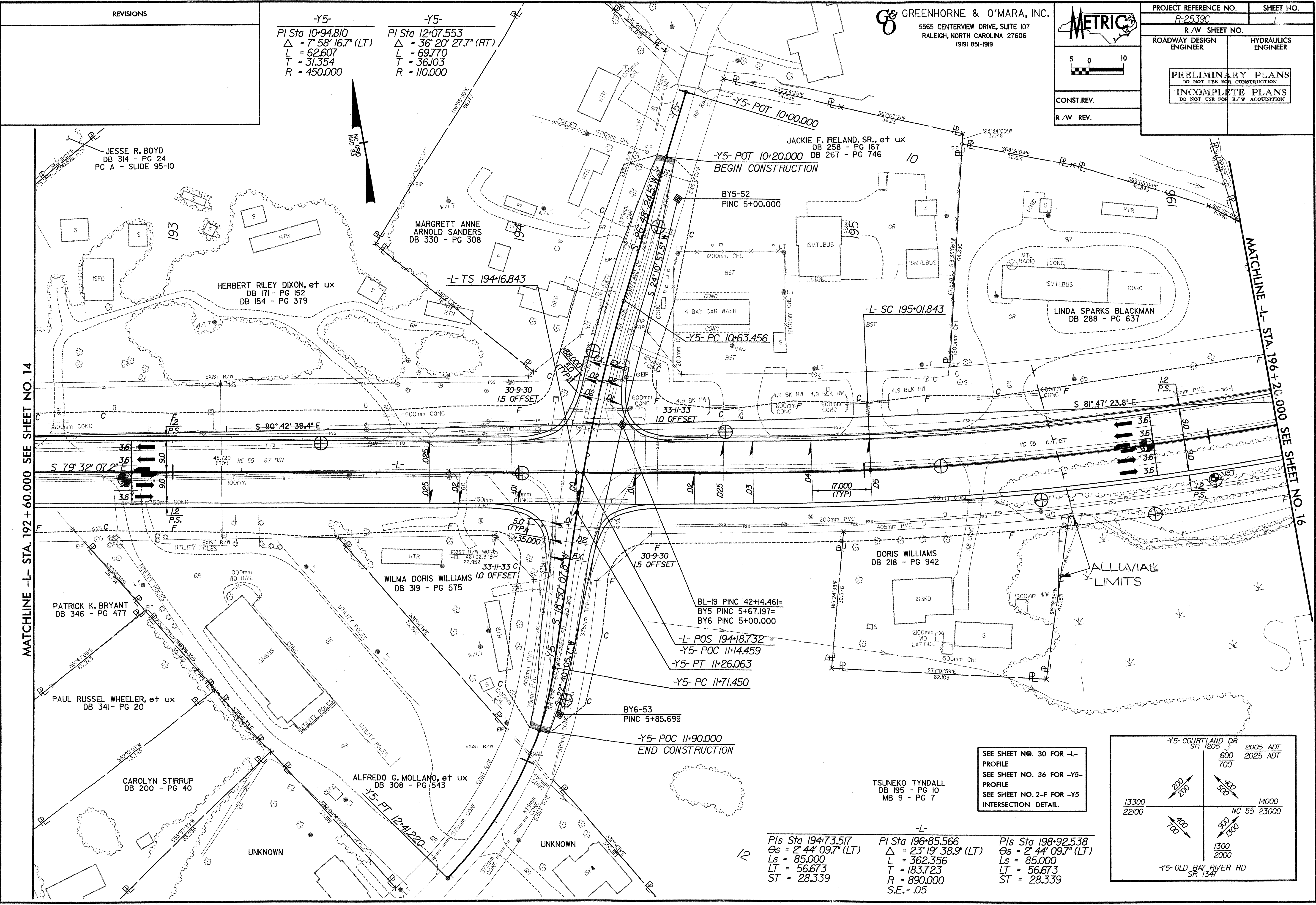
-Y5-
 PI Sta 12+07.553
 $\Delta = 36^{\circ} 20' 27.7''$ (RT)
 L = 69.770
 T = 36.103
 R = 110.000

GREENHORNE & O'MARA, INC.
 5565 CENTERVIEW DRIVE, SUITE 107
 RALEIGH, NORTH CAROLINA 27606
 (919) 851-1919



CONST. REV.
 R/W REV.

PROJECT REFERENCE NO. R-2539C	SHEET NO.
R/W SHEET NO.	
ROADWAY DESIGN ENGINEER	HYDRAULICS ENGINEER
PRELIMINARY PLANS DO NOT USE FOR CONSTRUCTION INCOMPLETE PLANS DO NOT USE FOR R/W ACQUISITION	



MATCHLINE -L- STA. 192+60.000 SEE SHEET NO. 14

MATCHLINE -L- STA. 196+20.000 SEE SHEET NO. 16

JESSE R. BOYD
 DB 314 - PG 24
 PC A - SLIDE 95-10

HERBERT RILEY DIXON, et ux
 DB 171 - PG 152
 DB 154 - PG 379

MARGRETT ANNE
 ARNOLD SANDERS
 DB 330 - PG 308

JACKIE F. IRELAND, SR., et ux
 DB 258 - PG 167
 DB 267 - PG 746

LINDA SPARKS BLACKMAN
 DB 288 - PG 637

PATRICK K. BRYANT
 DB 346 - PG 477

PAUL RUSSEL WHEELER, et ux
 DB 341 - PG 20

CAROLYN STIRRUP
 DB 200 - PG 40

ALFREDO G. MOLLANO, et ux
 DB 308 - PG 543

WILMA DORIS WILLIAMS 10 OFFSET
 DB 319 - PG 575

DORIS WILLIAMS
 DB 218 - PG 942

TSUNEKO TYNDALL
 DB 195 - PG 10
 MB 9 - PG 7

SEE SHEET NO. 30 FOR -L- PROFILE
 SEE SHEET NO. 36 FOR -Y5- PROFILE
 SEE SHEET NO. 2-F FOR -Y5 INTERSECTION DETAIL.

-L-
 Pls Sta 194+73.517
 $\Delta = 2^{\circ} 44' 09.7''$ (LT)
 Ls = 85.000
 LT = 56.673
 ST = 28.339

-L-
 PI Sta 196+85.566
 $\Delta = 23^{\circ} 19' 38.9''$ (LT)
 L = 362.356
 LT = 183.723
 R = 890.000
 S.E. = .05

-L-
 Pls Sta 198+92.538
 $\Delta = 2^{\circ} 44' 09.7''$ (LT)
 Ls = 85.000
 LT = 56.673
 ST = 28.339

