

REVISIONS

GREENHORNE & O'MARA, INC.
 5565 CENTERVIEW DRIVE, SUITE 107
 RALEIGH, NORTH CAROLINA 27606
 (919) 851-1919

METRIC

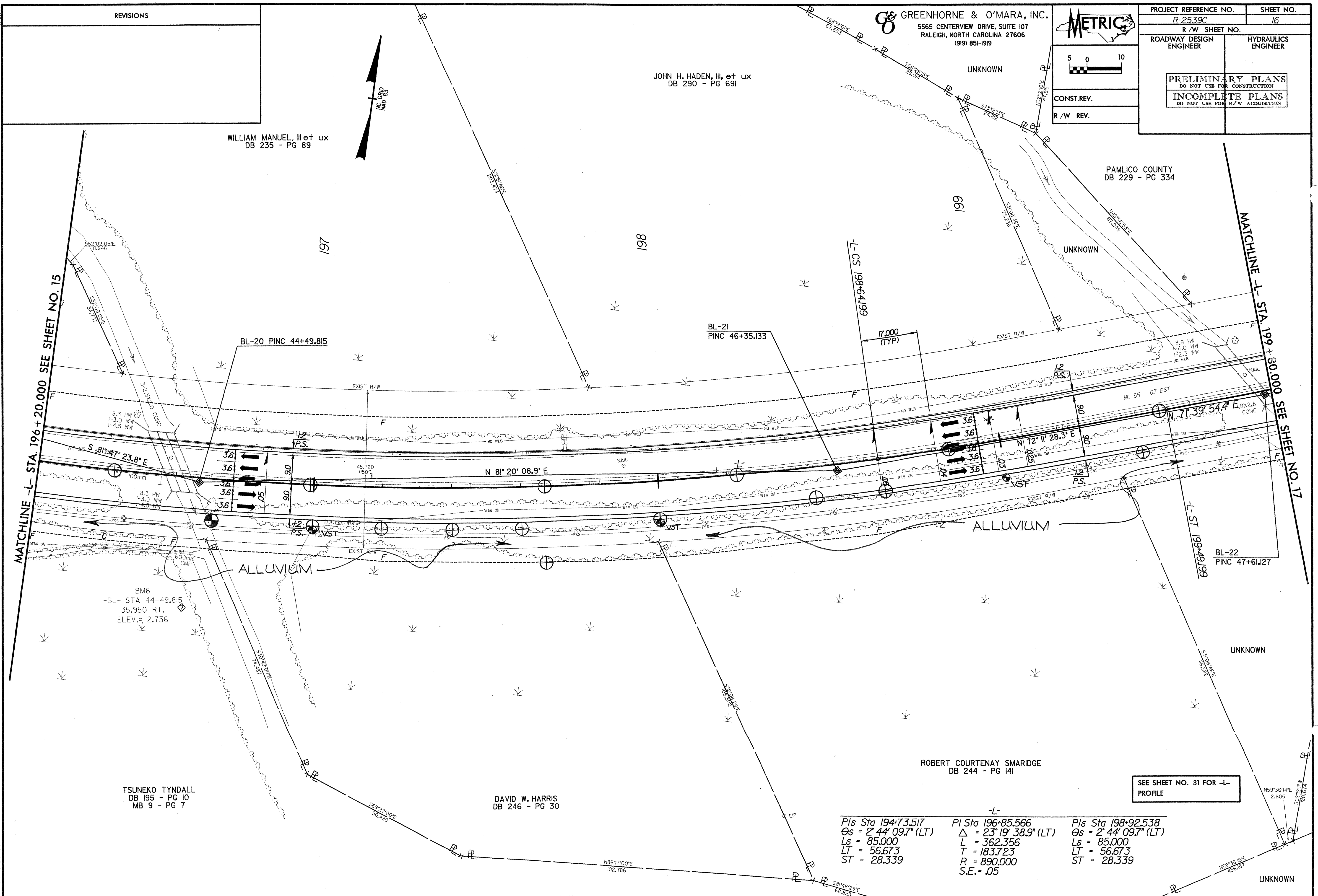
CONST. REV.
 R/W REV.

PROJECT REFERENCE NO. R-2539C	SHEET NO. 16
R/W SHEET NO.	
ROADWAY DESIGN ENGINEER	HYDRAULICS ENGINEER
PRELIMINARY PLANS DO NOT USE FOR CONSTRUCTION INCOMPLETE PLANS DO NOT USE FOR R/W ACQUISITION	

WILLIAM MANUEL, III et ux
 DB 235 - PG 89

JOHN H. HADEN, III, et ux
 DB 290 - PG 69I

PAMLICO COUNTY
 DB 229 - PG 334



MATCHLINE -L- STA. 196 + 20.000 SEE SHEET NO. 15

MATCHLINE -L- STA. 199 + 80.000 SEE SHEET NO. 17

BM6
 -BL- STA 44+49.815
 35.950 RT.
 ELEV. = 2.736

TSUNEKO TYNDALL
 DB 195 - PG 10
 MB 9 - PG 7

DAVID W. HARRIS
 DB 246 - PG 30

ROBERT COURTENAY SMARIDGE
 DB 244 - PG 14I

Pls Sta 194+73.517 $\Theta_s = 2^\circ 44' 09.7''$ (LT) $L_s = 85.000$ $LT = 56.673$ $ST = 28.339$	-L- Pl Sta 196+85.566 $\Delta = 23^\circ 19' 38.9''$ (LT) $L = 362.356$ $T = 183.723$ $R = 890.000$ $S.E. = .05$	Pls Sta 198+92.538 $\Theta_s = 2^\circ 44' 09.7''$ (LT) $L_s = 85.000$ $LT = 56.673$ $ST = 28.339$
----------------------------------------------------------------------------------------------------------------	------------------------------------------------------------------------------------------------------------------------------------	----------------------------------------------------------------------------------------------------------------

SEE SHEET NO. 31 FOR -L- PROFILE

UNKNOWN