

REVISIONS

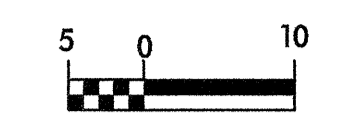
GREENHORNE & O'MARA, INC.
5565 CENTERVIEW DRIVE, SUITE 107
RALEIGH, NORTH CAROLINA 27606
(919) 851-1919



PROJECT REFERENCE NO. R-2539C SHEET NO. 24

R/W SHEET NO. ROADWAY DESIGN ENGINEER HYDRAULICS ENGINEER

PRELIMINARY PLANS
DO NOT USE FOR CONSTRUCTION
INCOMPLETE PLANS
DO NOT USE FOR R/W ACQUISITION



CONST. REV.

R/W REV.

ALBERT RANDOLPH GIBBS
DB 145 - PG 405
MB 5 - PG 6

GERALD D. MORRIS, et al
DB 324 - PG 882

ROLAND M. HUMPHREY, et ux
DB 303 - PG 462

GERALD D. MORRIS, et al

ROBERT RAY SANDERS, et ux
DB 319 - PG 397

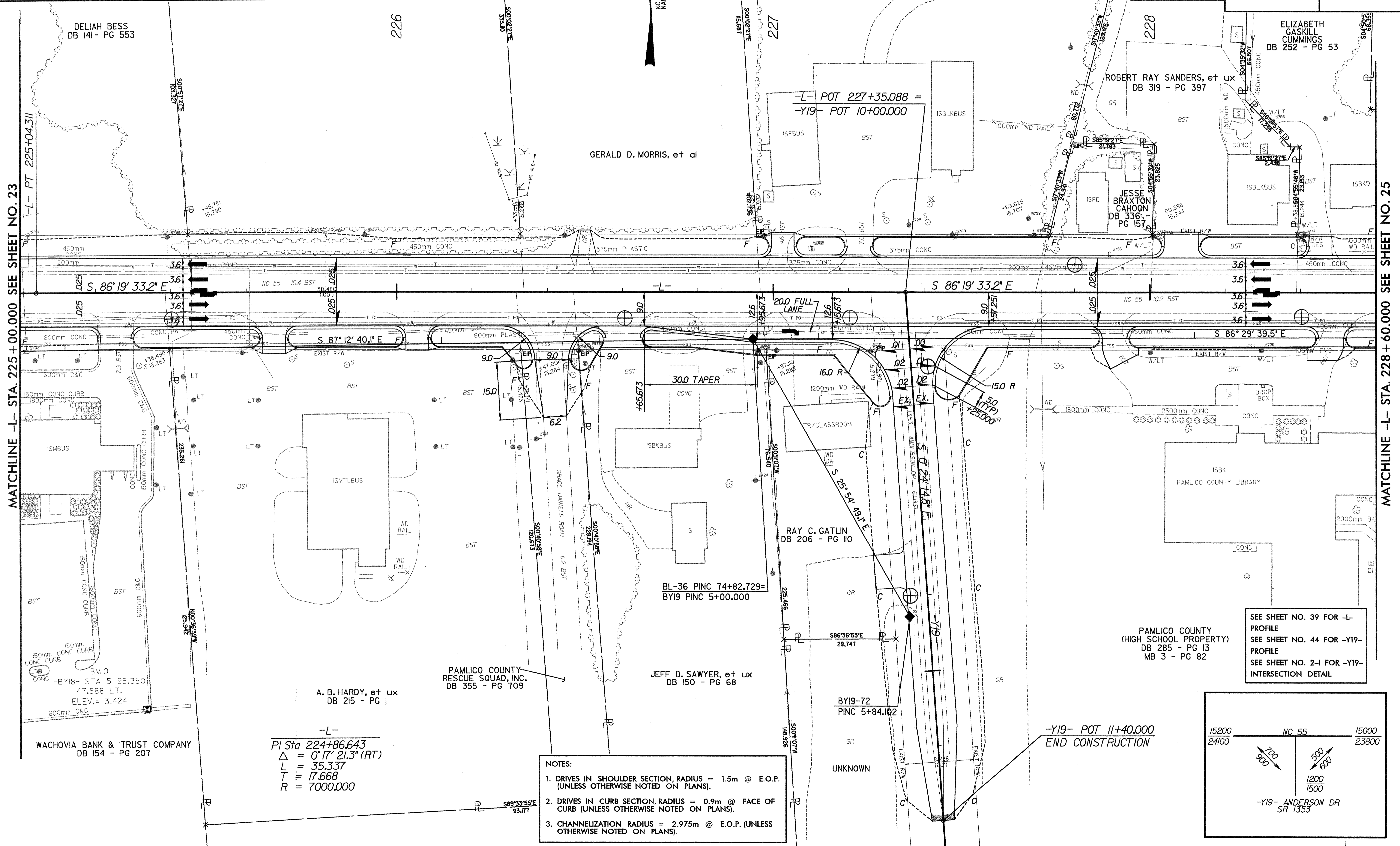
ELIZABETH GASKILL CUMMINGS
DB 252 - PG 53

DELIAH BESS
DB 141 - PG 553

JESSIE BRAXTON CAHOON
DB 336 - PG 157

MATCHLINE -L- STA. 225 + 00.000 SEE SHEET NO. 23

MATCHLINE -L- STA. 228 + 60.000 SEE SHEET NO. 25



WACHOVIA BANK & TRUST COMPANY
DB 154 - PG 207

A. B. HARDY, et ux
DB 215 - PG 1

PAMLICO COUNTY RESCUE SQUAD, INC.
DB 355 - PG 709

JEFF D. SAWYER, et ux
DB 150 - PG 68

RAY C. GATLIN
DB 206 - PG 110

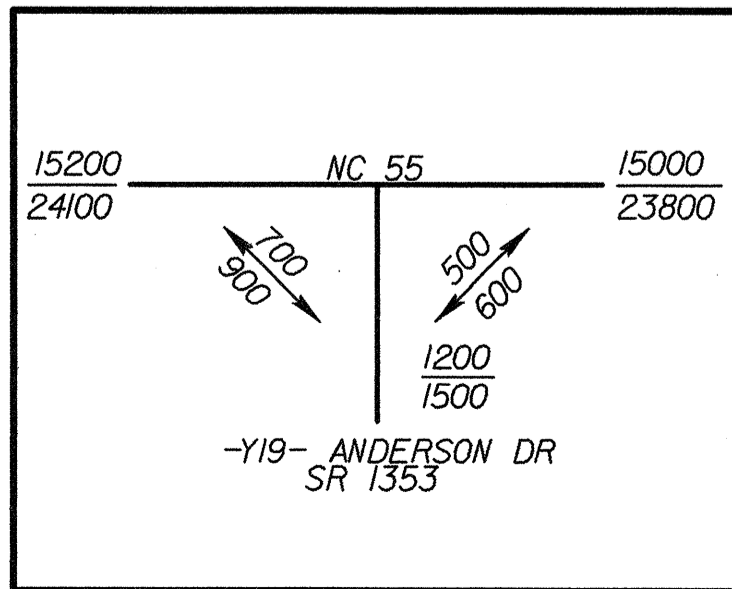
BL-36 PINC 74+82.729=
BY19 PINC 5+00.000

PAMLICO COUNTY (HIGH SCHOOL PROPERTY)
DB 285 - PG 13
MB 3 - PG 82

SEE SHEET NO. 39 FOR -L- PROFILE
SEE SHEET NO. 44 FOR -Y19- PROFILE
SEE SHEET NO. 2-I FOR -Y19- INTERSECTION DETAIL

-Y19- POT 11+40.000
END CONSTRUCTION

- NOTES:
1. DRIVES IN SHOULDER SECTION, RADIUS = 1.5m @ E.O.P. (UNLESS OTHERWISE NOTED ON PLANS).
 2. DRIVES IN CURB SECTION, RADIUS = 0.9m @ FACE OF CURB (UNLESS OTHERWISE NOTED ON PLANS).
 3. CHANNELIZATION RADIUS = 2.975m @ E.O.P. (UNLESS OTHERWISE NOTED ON PLANS).



-L-
PI Sta 224+86.643
Δ = 0°17'21.3" (RT)
L = 35.337
T = 17.668
R = 7000.000

*****SYSTEMTIME*****