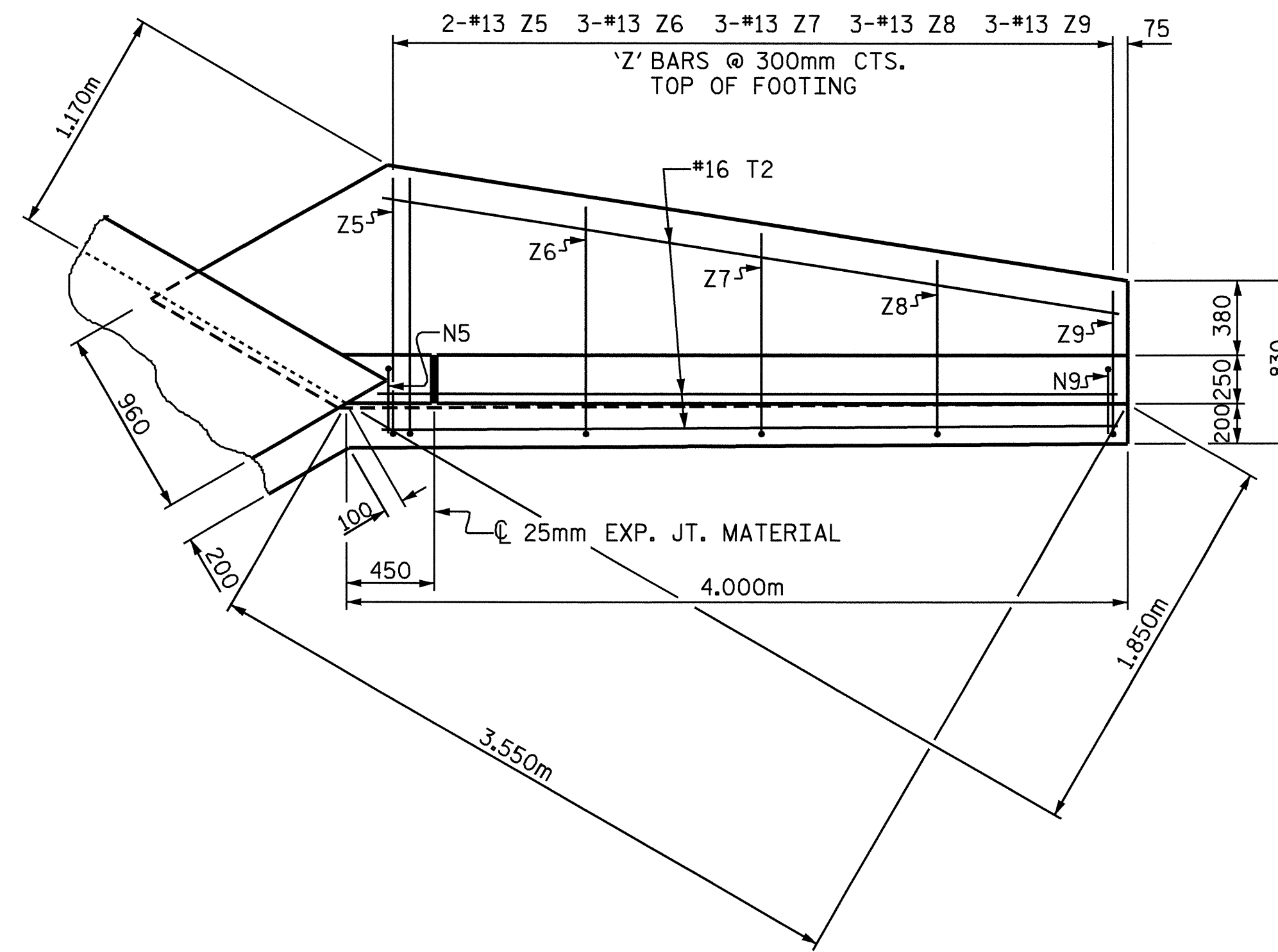
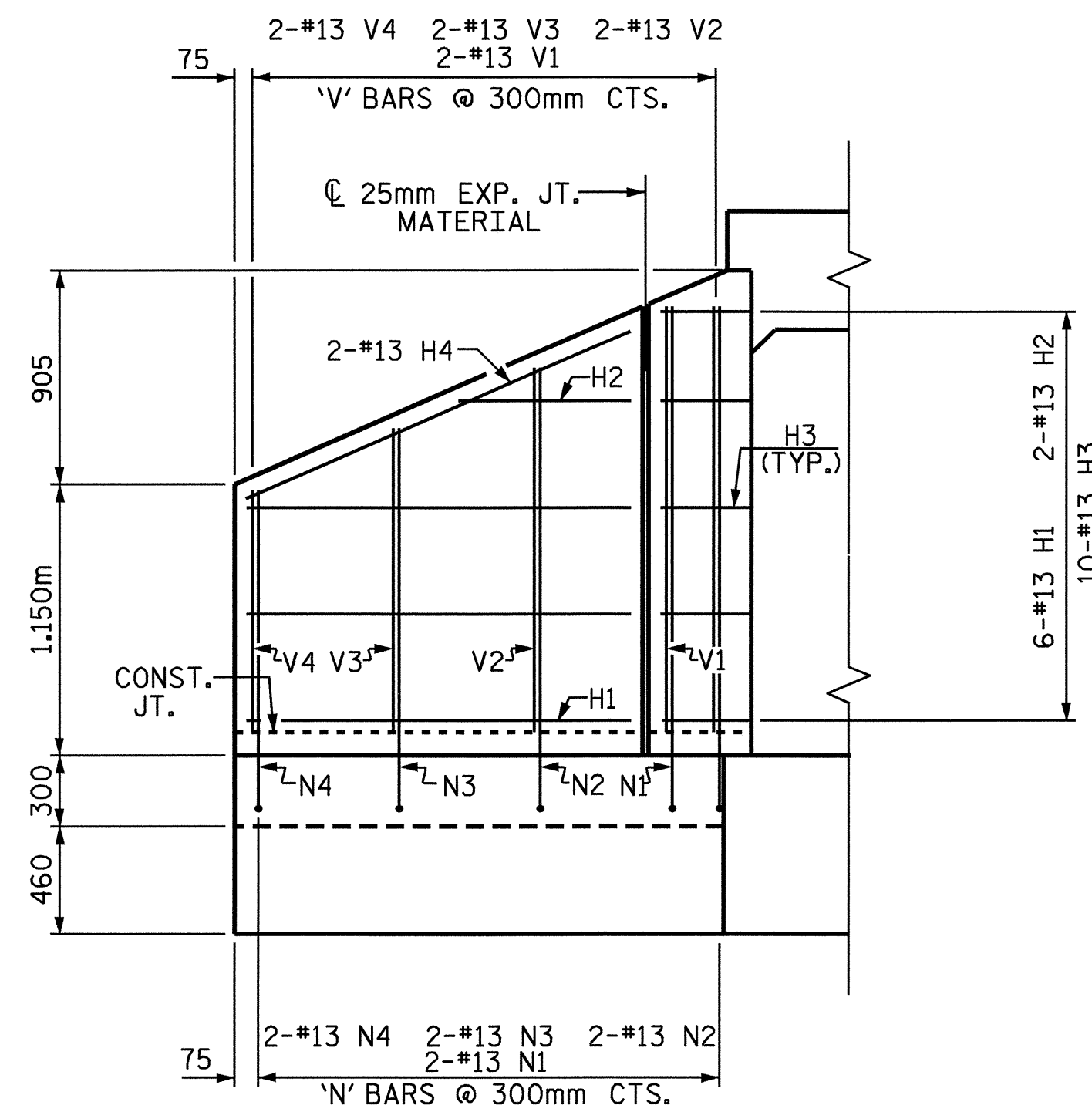


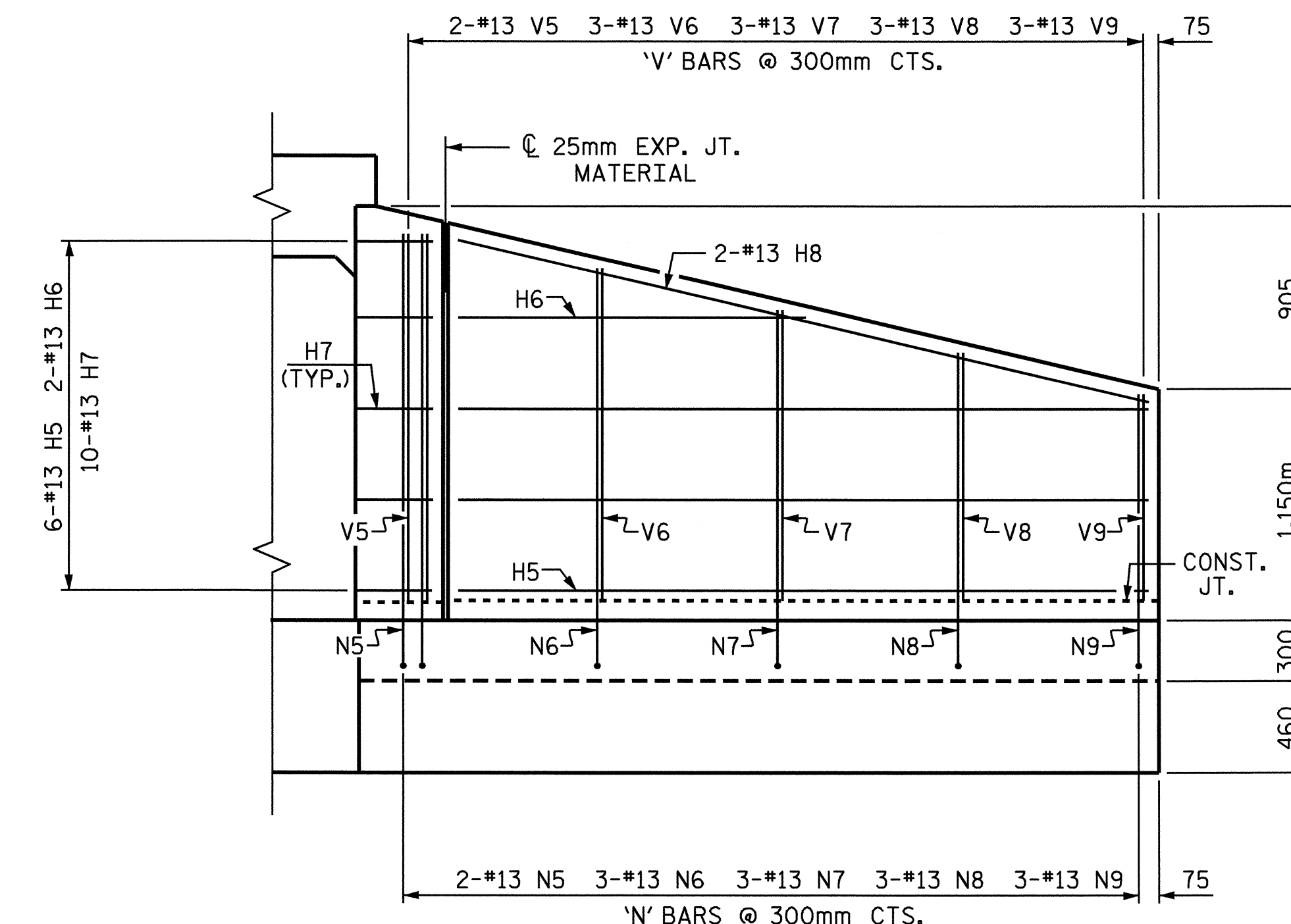
PLAN W2



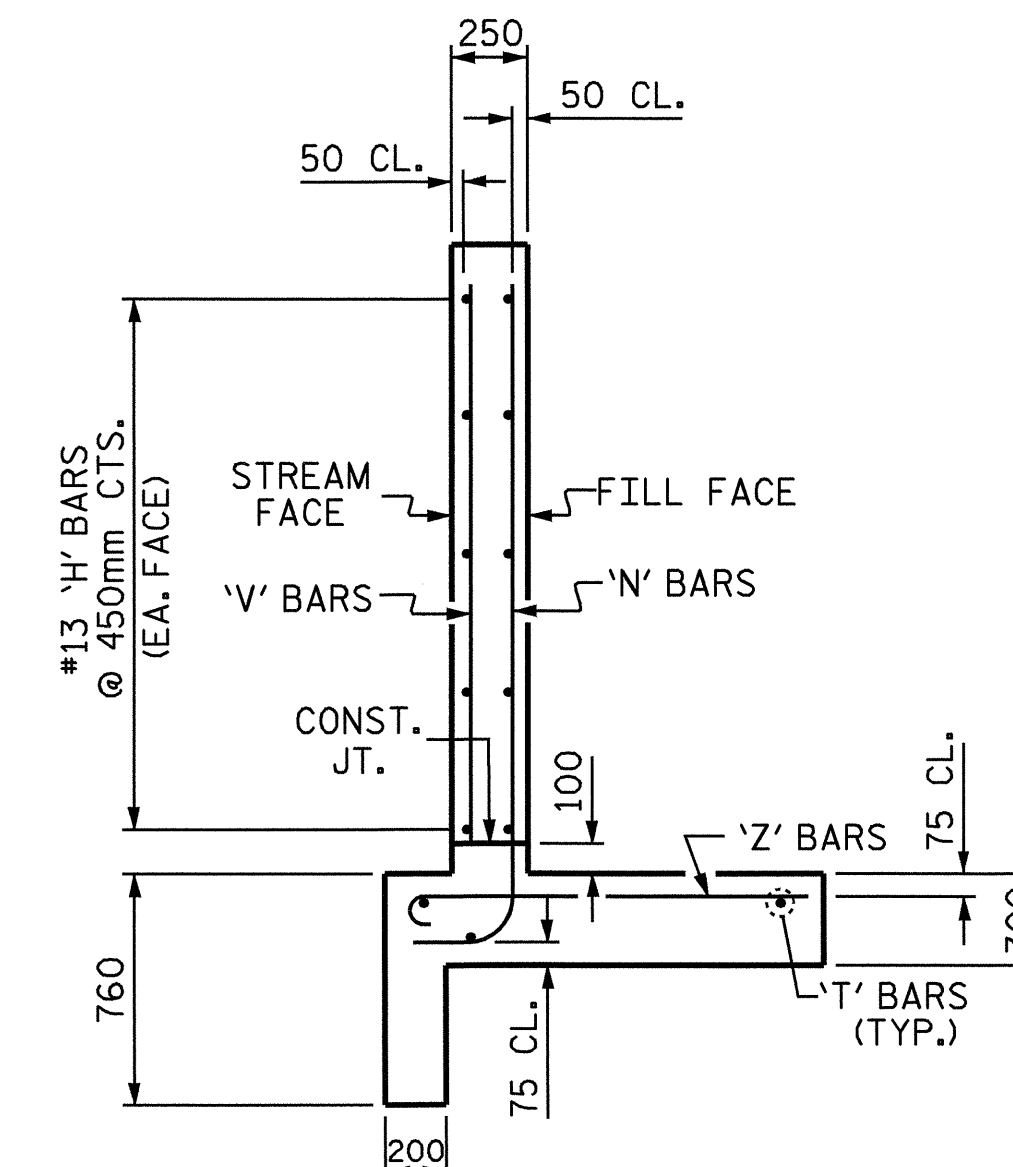
PLAN W1



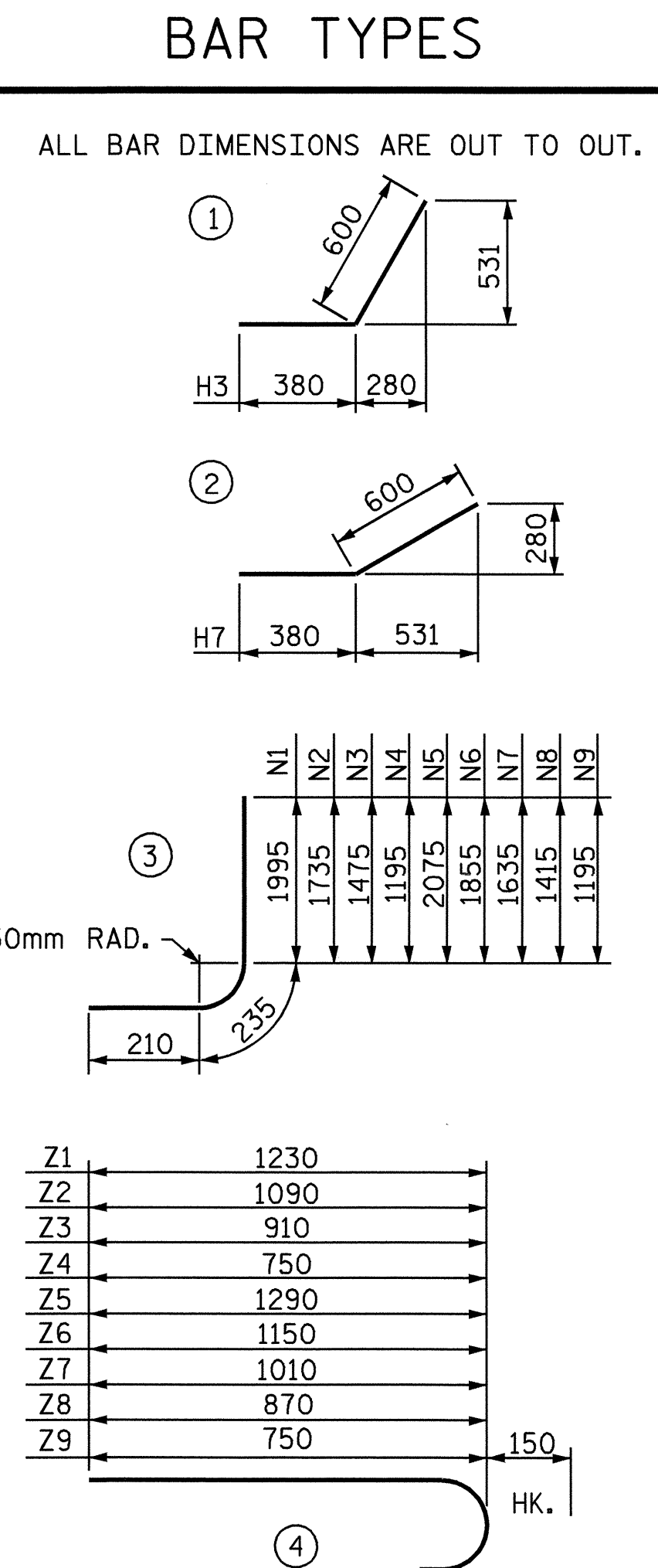
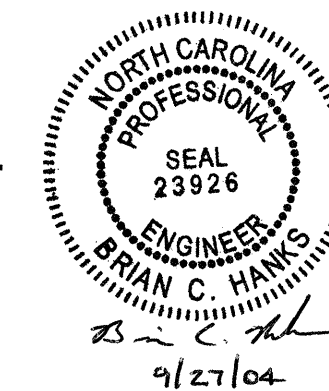
ELEVATION W2



ELEVATION W1



TYPICAL WING SECTION



BILL OF MATERIAL FOR RIGHT EXTENSION WINGS					
BAR	NO.	SIZE	TYPE	LENGTH	WEIGHT
H1	6	13	STR	1640	10
H2	2	13	STR	780	2
H3	10	13	1	980	10
H4	2	13	STR	1780	4
H5	6	13	STR	3440	21
H6	2	13	STR	1940	4
H7	10	13	2	980	10
H8	2	13	STR	3520	7
N1	2	13	3	2440	5
N2	2	13	3	2180	4
N3	2	13	3	1920	4
N4	2	13	3	1640	3
N5	2	13	3	2520	5
N6	3	13	3	2300	7
N7	3	13	3	2080	6
N8	3	13	3	1860	6
N9	3	13	3	1640	5
T1	3	16	STR	2200	10
T2	3	16	STR	4000	19
V1	2	13	STR	1820	4
V2	2	13	STR	1560	3
V3	2	13	STR	1300	3
V4	2	13	STR	1020	2
V5	2	13	STR	1900	4
V6	3	13	STR	1680	5
V7	3	13	STR	1460	4
V8	3	13	STR	1240	4
V9	3	13	STR	1020	3
Z1	2	13	4	1380	3
Z2	2	13	4	1240	2
Z3	2	13	4	1060	2
Z4	2	13	4	900	2
Z5	2	13	4	1440	3
Z6	3	13	4	1300	3
Z7	3	13	4	1160	3
Z8	3	13	4	1020	3
Z9	3	13	4	900	3
EPOXY COATED REINFORCING STEEL FOR 2 WING WALLS					198 kgs
CLASS A CONCRETE					
2 WINGS					5.3 m³
1 HEADWALL					0.4 m³
1 END CURTAIN WALL					0.5 m³
2 EDGE BEAMS					0.7 m³
TOTAL					6.9 m³

PROJECT NO. R-2539C  
PAMLICO COUNTY  
 STATION: 199+76.780 -L-

SHEET 6 OF 6  
 STATE OF NORTH CAROLINA  
 DEPARTMENT OF TRANSPORTATION  
 RALEIGH  
**WINGS FOR  
 CONCRETE BOX CULVERT  
 H=1.800m 55°SKEW  
 RIGHT EXTENSION**

ASSEMBLED BY : KEITH D. LAYNE DATE : 01-08-04  
 CHECKED BY : A. B. NAIK DATE : 2-25-04  
 DRAWN BY : JLR 6/97  
 CHECKED BY : VAP 6/97

FOR WING ORIENTATION, SEE BARREL STANDARD SHEET.

REVISIONS						SHEET NO.
NO.	BY:	DATE:	NO.	BY:	DATE:	C-15
1			3			TOTAL SHEETS
2			4			20