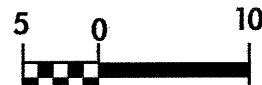
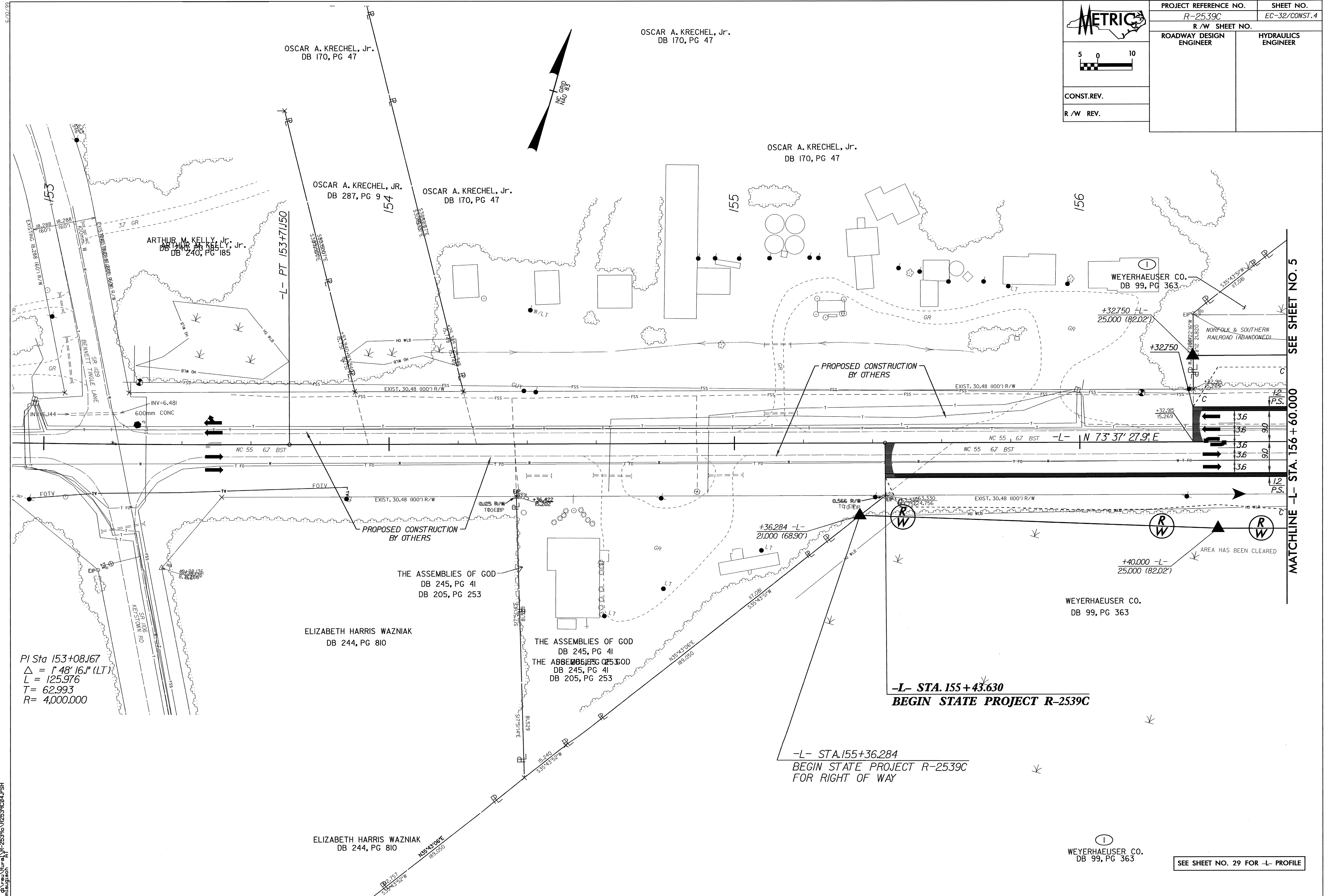
 5 0 10 	PROJECT REFERENCE NO. R-2539C	SHEET NO. EC-32/CONST. 4
	R / W SHEET NO.	
CONST. REV.	ROADWAY DESIGN ENGINEER	HYDRAULICS ENGINEER
R / W REV.		



PI Sta 153+08.167  
 $\Delta = 1' 48" 16.1" (LT)$   
 $L = 125.976$   
 $T = 62.993$   
 $R = 4,000.000$

**-L- STA. 155+43.630**  
**BEGIN STATE PROJECT R-2539C**

**-L- STA. 155+36.284**  
**BEGIN STATE PROJECT R-2539C**  
**FOR RIGHT OF WAY**

MATCHLINE -L- STA. 156 + 60.000 SEE SHEET NO. 5

SEE SHEET NO. 29 FOR -L- PROFILE

04 NOV 2004 01:52  
 C:\Users\m\OneDrive\Documents\2539c\1255904\FISH