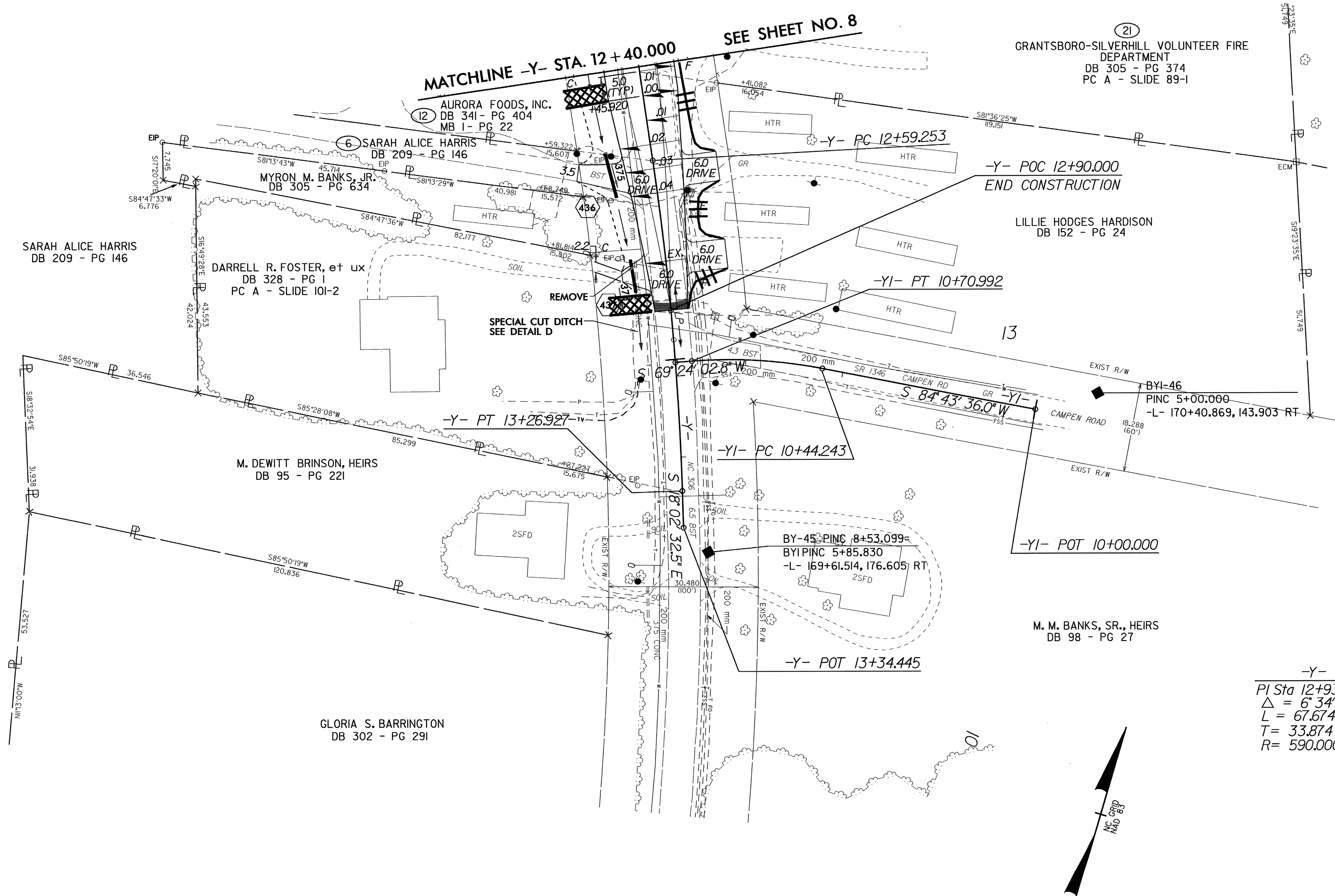
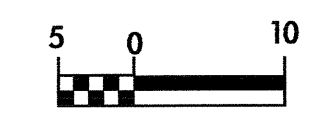




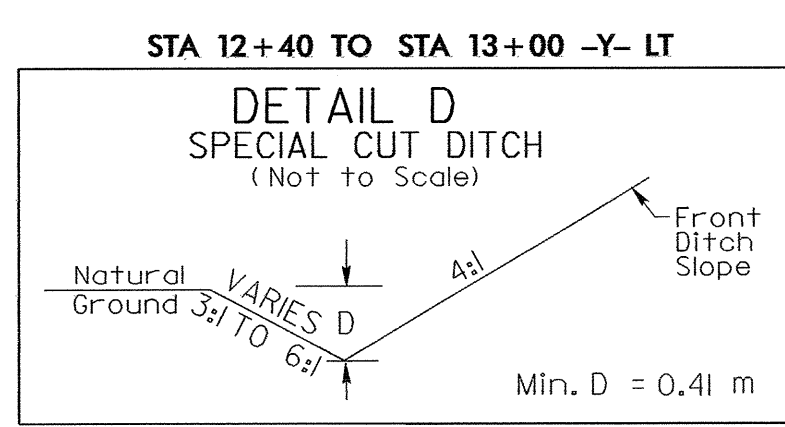
PROJECT REFERENCE NO. R-2539C		SHEET NO. EC-56/CONST.28	
R/W SHEET NO.			
ROADWAY DESIGN ENGINEER		HYDRAULICS ENGINEER	
CONST.REV.			
R/W REV.			



-Y-  
 PI Sta 12+93.127  
 $\Delta = 6' 34' 18.8''$  (RT)  
 L = 67.674  
 T = 33.874  
 R = 590.000

NOTES:  
 1. DRIVES IN SHOULDER SECTION, RADIUS = 1.5m @ E.O.P.  
 (UNLESS OTHERWISE NOTED ON PLANS).

SEE SHEET NO. 41 FOR -Y- PROFILE



6/10/99  
 CA 11/1/2004 12:17  
 CA 11/1/2004 12:17  
 mlaig@metric.com