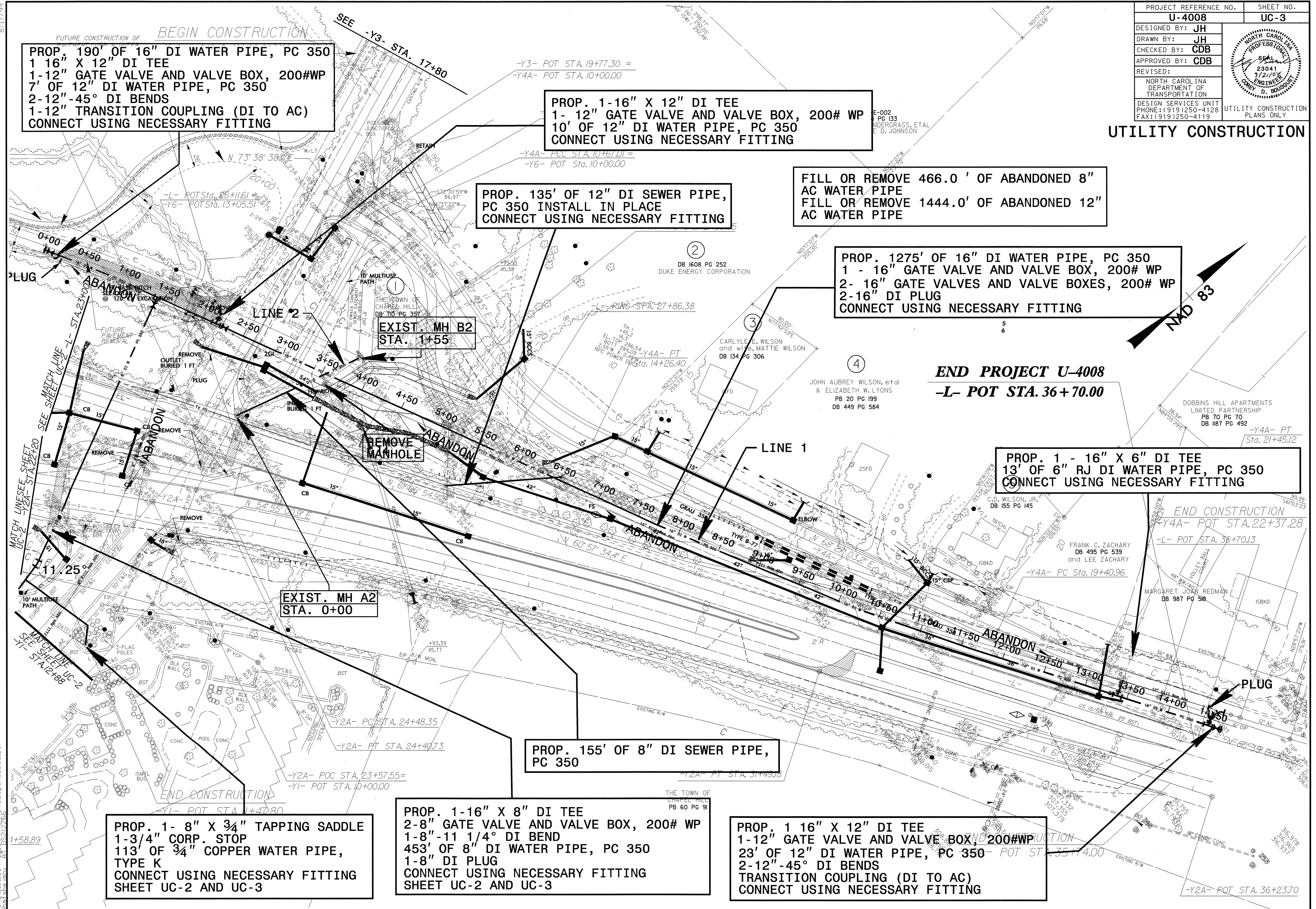


PROJECT REFERENCE NO.	SHEET NO.
U-4008	UC-3
DESIGNED BY: JH	
DRAWN BY: JH	
CHECKED BY: CDB	
APPROVED BY: CDB	
REVISED:	
NORTH CAROLINA DEPARTMENT OF TRANSPORTATION DESIGN SERVICES UNIT PHONE: (919) 250-4128 FAX: (919) 250-4119	
UTILITY CONSTRUCTION PLANS ONLY	

UTILITY CONSTRUCTION



PROP. 190' OF 16" DI WATER PIPE, PC 350
 1 16" X 12" DI TEE
 1-12" GATE VALVE AND VALVE BOX, 200#WP
 7' OF 12" DI WATER PIPE, PC 350
 2-12"-45° DI BENDS
 1-12" TRANSITION COUPLING (DI TO AC)
 CONNECT USING NECESSARY FITTING

PROP. 1-16" X 12" DI TEE
 1- 12" GATE VALVE AND VALVE BOX, 200# WP
 10' OF 12" DI WATER PIPE, PC 350
 CONNECT USING NECESSARY FITTING

PROP. 135' OF 12" DI SEWER PIPE, PC 350
 INSTALL IN PLACE
 CONNECT USING NECESSARY FITTING

FILL OR REMOVE 466.0' OF ABANDONED 8" AC WATER PIPE
FILL OR REMOVE 1444.0' OF ABANDONED 12" AC WATER PIPE

PROP. 1275' OF 16" DI WATER PIPE, PC 350
 1 - 16" GATE VALVE AND VALVE BOX, 200# WP
 2- 16" GATE VALVES AND VALVE BOXES, 200# WP
 2-16" DI PLUG
 CONNECT USING NECESSARY FITTING

END PROJECT U-4008
-L- POT STA. 36+70.00

PROP. 1 - 16" X 6" DI TEE
 13' OF 6" RJ DI WATER PIPE, PC 350
 CONNECT USING NECESSARY FITTING

PROP. 155' OF 8" DI SEWER PIPE, PC 350

PROP. 1- 8" X 3/4" TAPPING SADDLE
 1-3/4" CORP. STOP
 113' OF 3/4" COPPER WATER PIPE, TYPE K
 CONNECT USING NECESSARY FITTING
 SHEET UC-2 AND UC-3

PROP. 1-16" X 8" DI TEE
 2-8" GATE VALVE AND VALVE BOX, 200# WP
 1-8"-11 1/4" DI BEND
 453' OF 8" DI WATER PIPE, PC 350
 1-8" DI PLUG
 CONNECT USING NECESSARY FITTING
 SHEET UC-2 AND UC-3

PROP. 1 16" X 12" DI TEE
 1-12" GATE VALVE AND VALVE BOX, 200#WP
 23' OF 12" DI WATER PIPE, PC 350
 2-12"-45° DI BENDS
 TRANSITION COUPLING (DI TO AC)
 CONNECT USING NECESSARY FITTING

8/17/09

21-SEP-2004 11:39 AM
 R:\Utilities\Proj\U4008\psh5_UC3.DGN
 15/12/2009