

UTILITIES BY OTHERS

NOTE:
ALL PROPOSED UTILITY WORK
SHOWN ON THIS SHEET WILL
BE DONE BY OTHERS

END PROJECT B-3350
-L- STA. 21+00

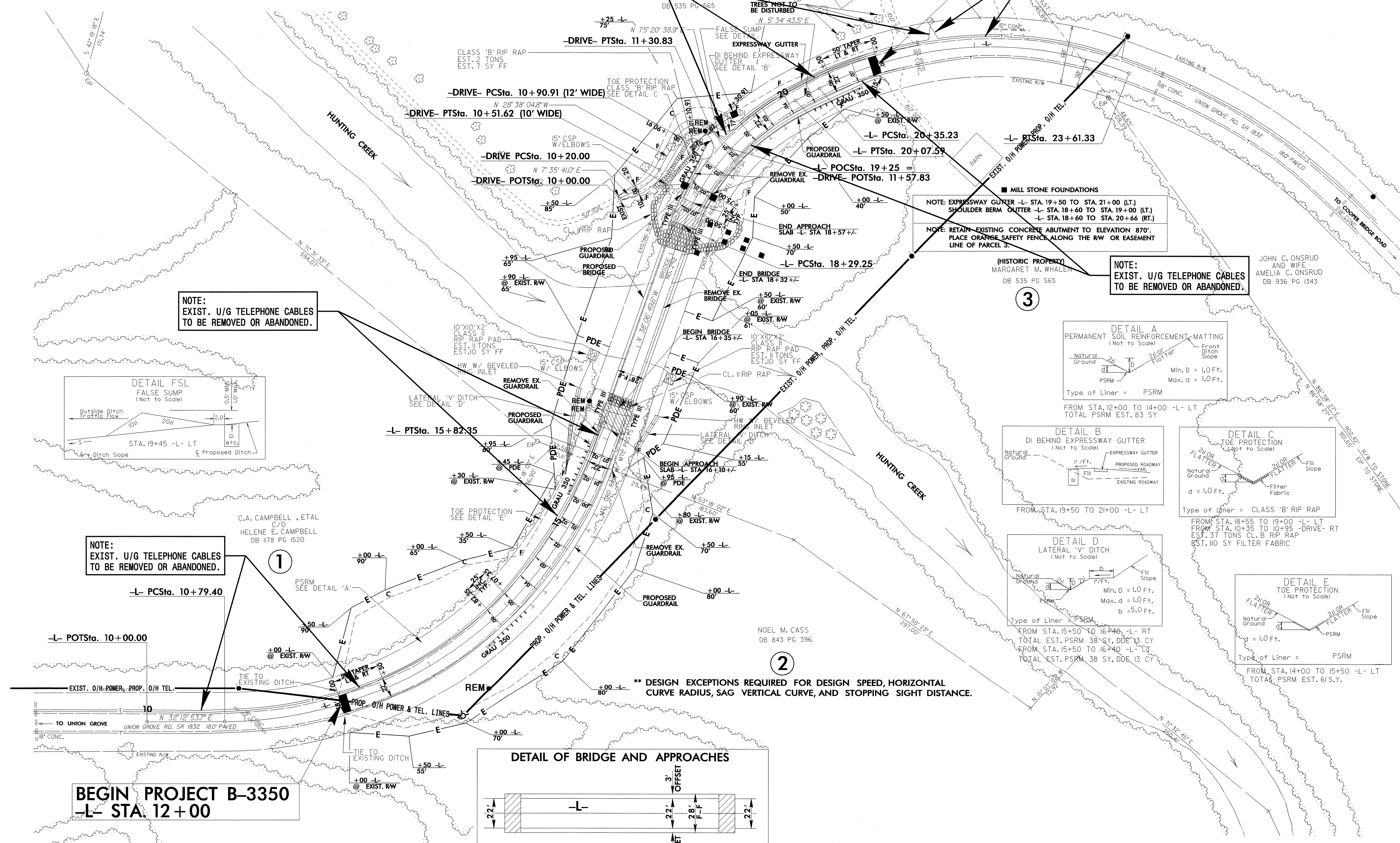
NOTE:
EXIST. U/G TELEPHONE CABLES
TO REMAIN IN SERVICE.

NOTE: HISTORIC STONE FOUNDATIONS WHICH ARE UNAVOIDABLY
IMPACTED BY THE CONSTRUCTION ARE TO BE RELOCATED
AT A SITE ON PARCEL 3 AS DIRECTED BY THE ENGINEER.

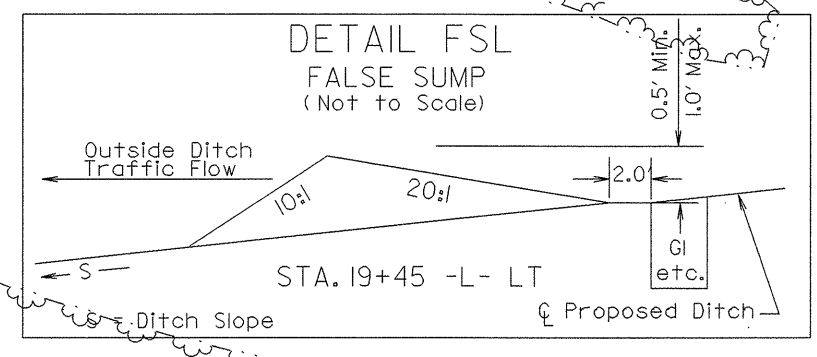
-L-		
PI Sta 13+68.06 Δ = 70° 19' 43.2" (LT) D = 13° 59' 00.0" ** L = 502.95' T = 288.66' R = 409.74' SE = .06 RO = SEE PLANS	PI Sta 19+23.01 Δ = 43° 41' 33.1" (RT) D = 24° 30' 00.0" ** L = 178.34' T = 93.76' R = 233.86' SE = .08 RO = SEE PLANS	PI Sta 22+08.58 Δ = 48° 05' 56.8" (RT) D = 14° 45' 00.0" ** L = 326.10' T = 173.35' R = 388.45' SE = .08 RO = SEE PLANS

-DRIVE-	
PI Sta 10+36.36 Δ = 36° 13' 45.8" (LT) D = 114° 35' 00.0" ** L = 31.62' T = 16.36' R = 50.00' SE = SEE PLANS	PI Sta 11+19.06 Δ = 103° 58' 43.8" (RT) D = 260° 26' 00.0" ** L = 39.93' T = 20.15' R = 22.00' SE = SEE PLANS

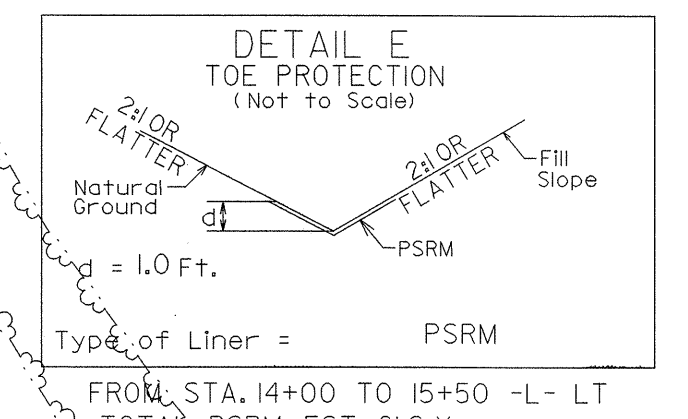
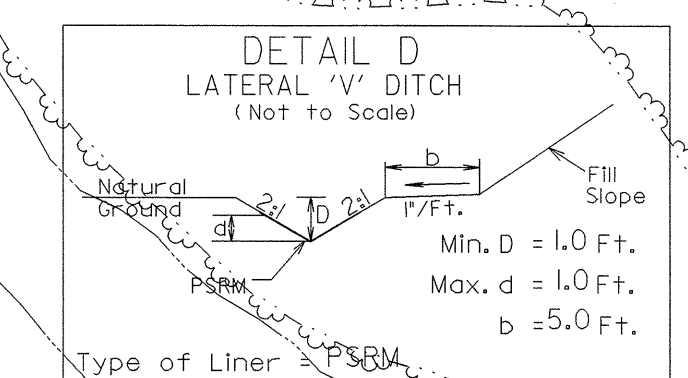
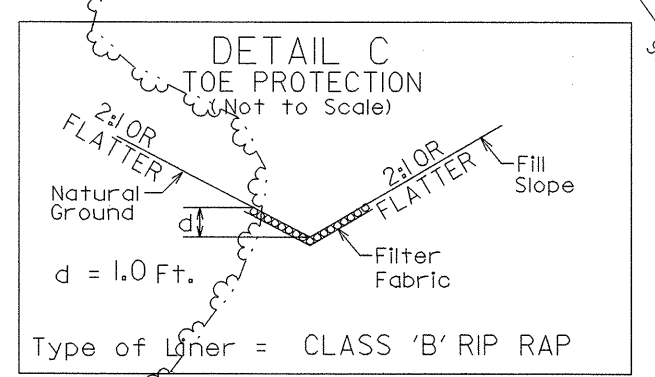
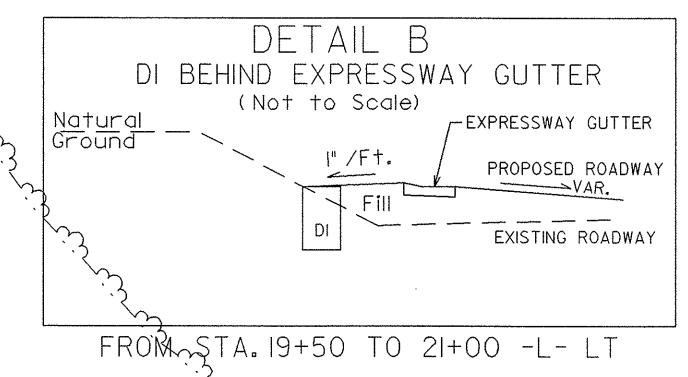
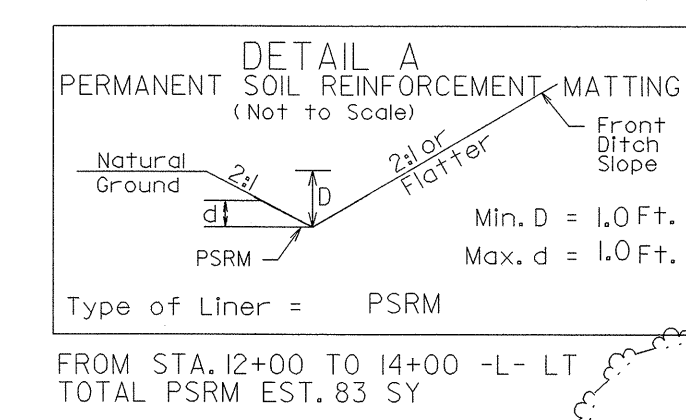
NOTE:
EXIST. U/G TELEPHONE CABLES
TO BE REMOVED OR ABANDONED.



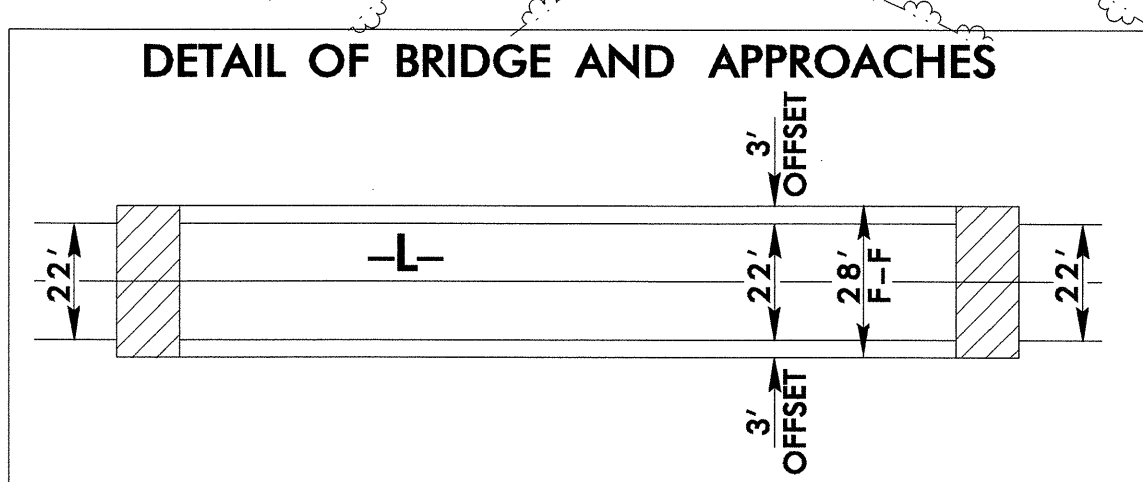
NOTE:
EXIST. U/G TELEPHONE CABLES
TO BE REMOVED OR ABANDONED.



NOTE:
EXIST. U/G TELEPHONE CABLES
TO BE REMOVED OR ABANDONED.



** DESIGN EXCEPTIONS REQUIRED FOR DESIGN SPEED, HORIZONTAL
CURVE RADIUS, SAG VERTICAL CURVE, AND STOPPING SIGHT DISTANCE.



BEGIN PROJECT B-3350
-L- STA. 12+00

8/17/99

NOV 2004 16:24 U:\Projects\B3350s4_U02.ut-pshdgm
C:\Users\j... \AppData\Local\Temp\DS213533
doug.touner