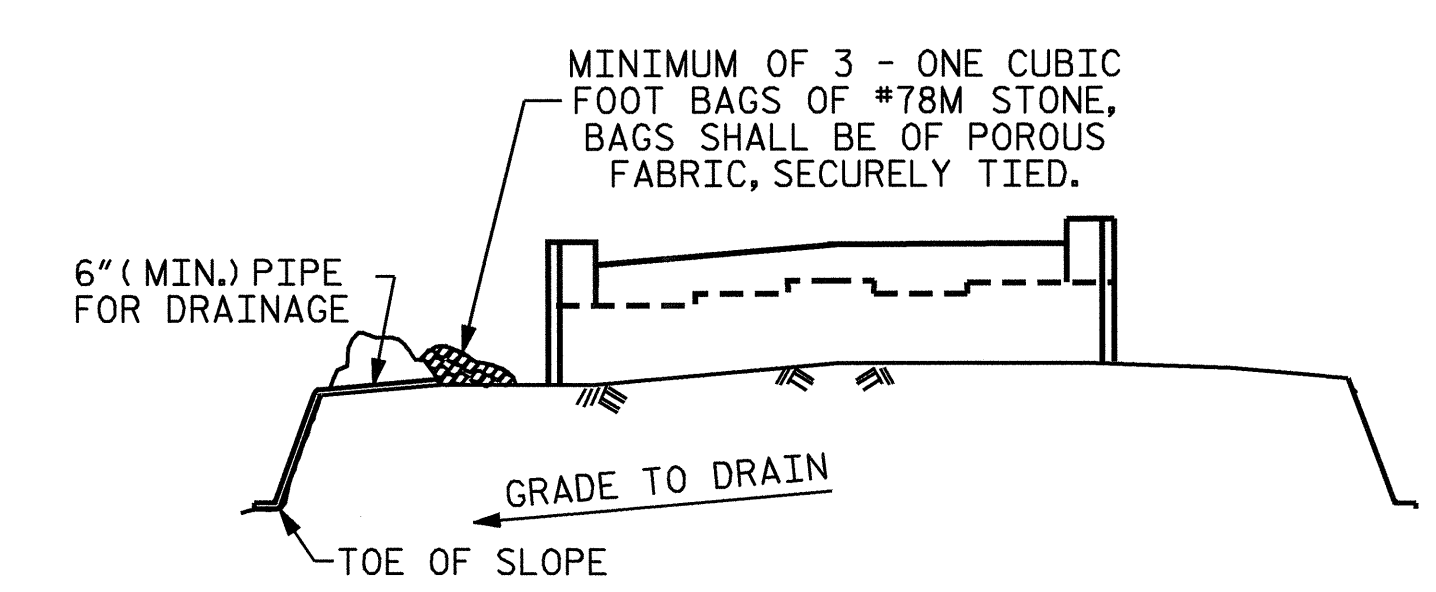


BILL OF MATERIAL					
END BENT 1					
BAR	NO.	SIZE	TYPE	LENGTH	WEIGHT
B1	8	10	1	38'-9"	1334
B2	2	6	STR	35'-11"	108
H1	40	5	2	10'-10"	452
K1	20	4	STR	19'-2"	256
K2	8	4	STR	2'-11"	16
S1	30	5	4	7'-10"	245
S2	30	5	3	3'-7"	112
S3	21	5	5	9'-6"	208
T1	21	6	STR	5'-6"	173
T2	27	7	STR	5'-6"	304
T3	18	6	STR	6'-6"	176
T4	24	7	STR	6'-6"	319
V1	62	5	STR	6'-8"	431
V2	56	5	STR	8'-4"	487
V3	10	9	7	8'-3"	281
V4	10	9	7	8'-10"	300
V5	10	9	7	9'-3"	315
U1	31	4	6	3'-8"	76
REINFORCING STEEL					5517 lbs.
CLASS A CONCRETE					
POUR #1 (FOOTINGS)					9.3 CU. YD.
POUR #2 (COLUMNS)					2.2 CU. YD.
POUR #3 CAP & LOWER PORTION OF WINGS					12.9 CU. YD.
POUR #4 BACKWALL & UPPER PORTION OF WINGS					10.8 CU. YD.
TOTAL CLASS A CONCRETE					35.2 CU. YD.

**PLAN OF FOOTING**

DETAILS SHOWN ARE TYPICAL FOR ALL FOOTINGS

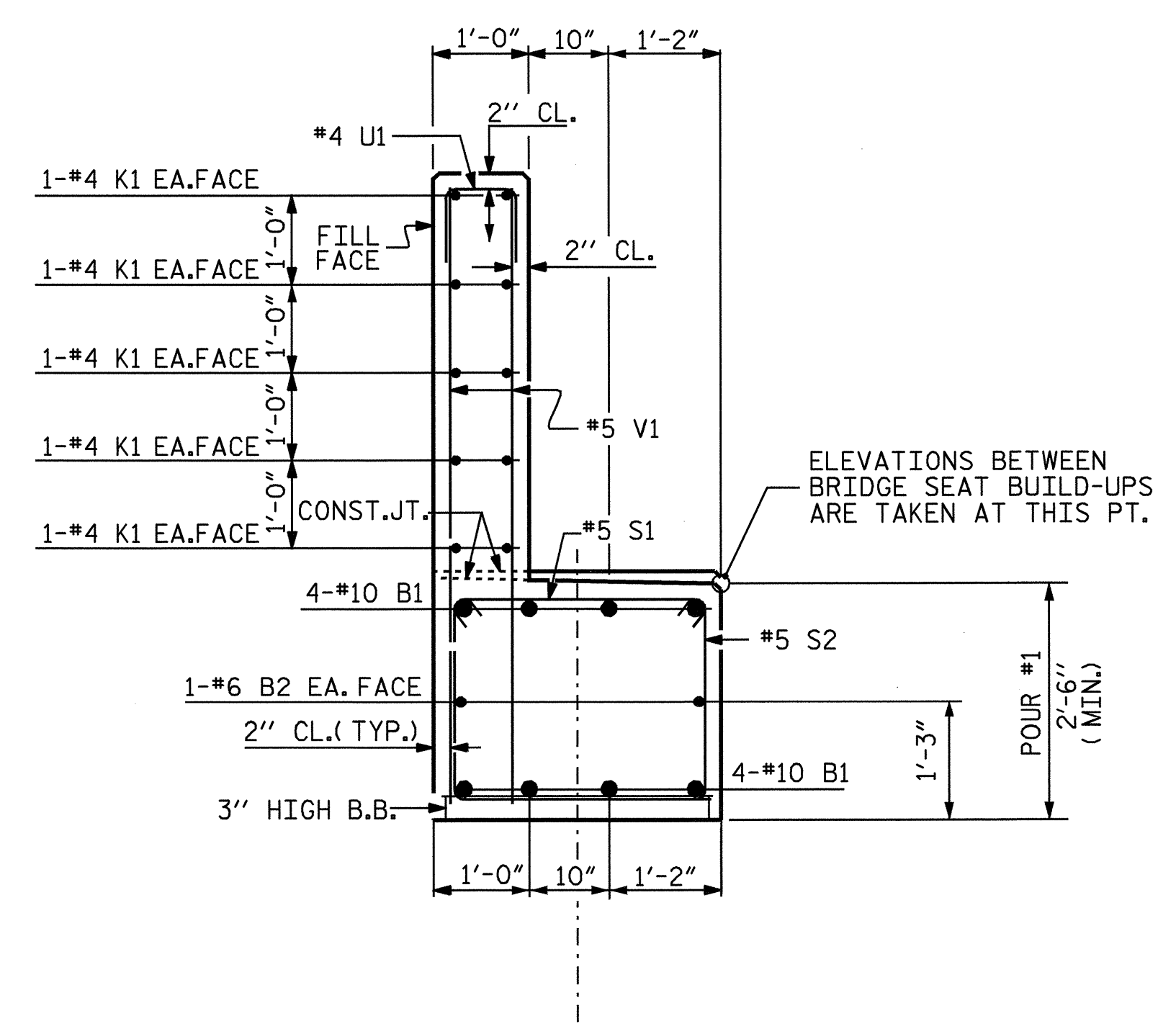


BAGGED STONE AND PIPE SHALL BE PLACED IMMEDIATELY AFTER COMPLETION OF END BENT EXCAVATION. PIPE MAY BE EITHER CONCRETE, CORRUGATED STEEL, CORRUGATED ALUMINUM ALLOY, OR CORRUGATED PLASTIC. PERFORATED PIPE WILL NOT BE ALLOWED.

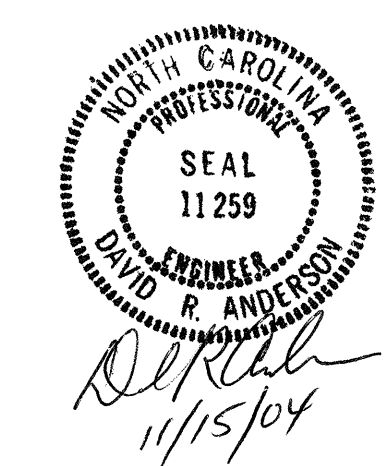
BAGGED STONE SHALL REMAIN IN PLACE UNTIL THE ENGINEER DIRECTS THAT IT BE REMOVED. THE CONTRACTOR SHALL REMOVE AND DISPOSE OF SILT ACCUMULATIONS AT BAGGED STONE WHEN SO DIRECTED BY THE ENGINEER. BAGS SHALL BE REMOVED AND REPLACED WHENEVER THE ENGINEER DETERMINES THAT THEY HAVE DETERIORATED AND LOST THEIR EFFECTIVENESS.

NO SEPARATE PAYMENT WILL BE MADE FOR THIS WORK AND THE ENTIRE COST OF THIS WORK SHALL BE INCLUDED IN THE UNIT CONTRACT PRICE BID FOR THE SEVERAL PAY ITEMS.

**TEMPORARY DRAINAGE AT END BENT**



**SECTION A-A**



PROJECT NO. **B-3350**  
**IREDELL** COUNTY  
 STATION: **17+33.50 -L-**  
 SHEET 3 OF 3

STATE OF NORTH CAROLINA  
 DEPARTMENT OF TRANSPORTATION  
 RALEIGH  
 SUBSTRUCTURE  
**END BENT 1**

REVISIONS				SHEET NO.	
NO.	BY:	DATE:	NO.	BY:	DATE:
1			3		
2			4		

S-21  
TOTAL SHEETS  
35

DRAWN BY **S. M. RASHIDI** DATE **5/2/03**  
 CHECKED BY **N. TRAN** DATE **5/19/03**