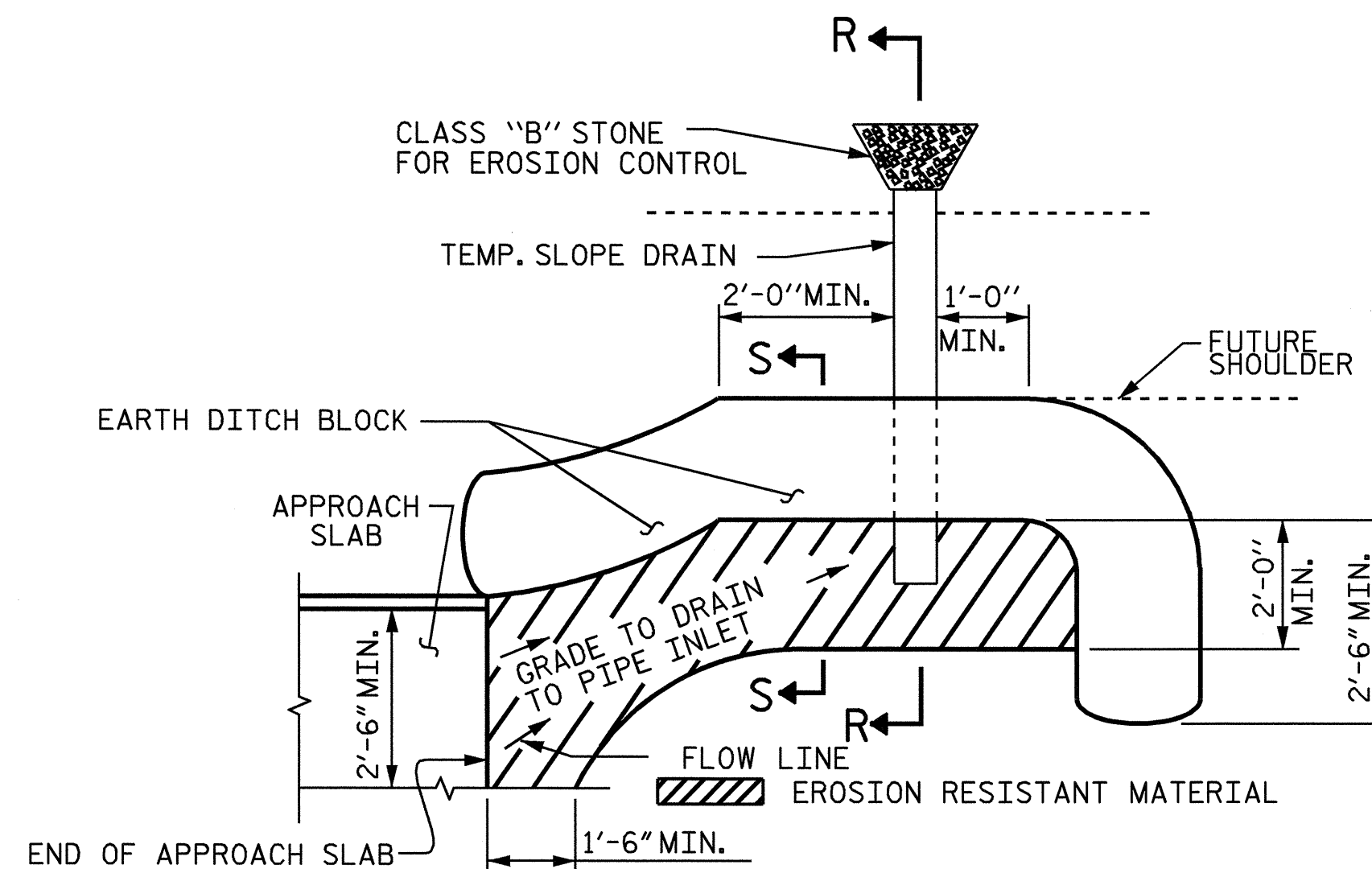


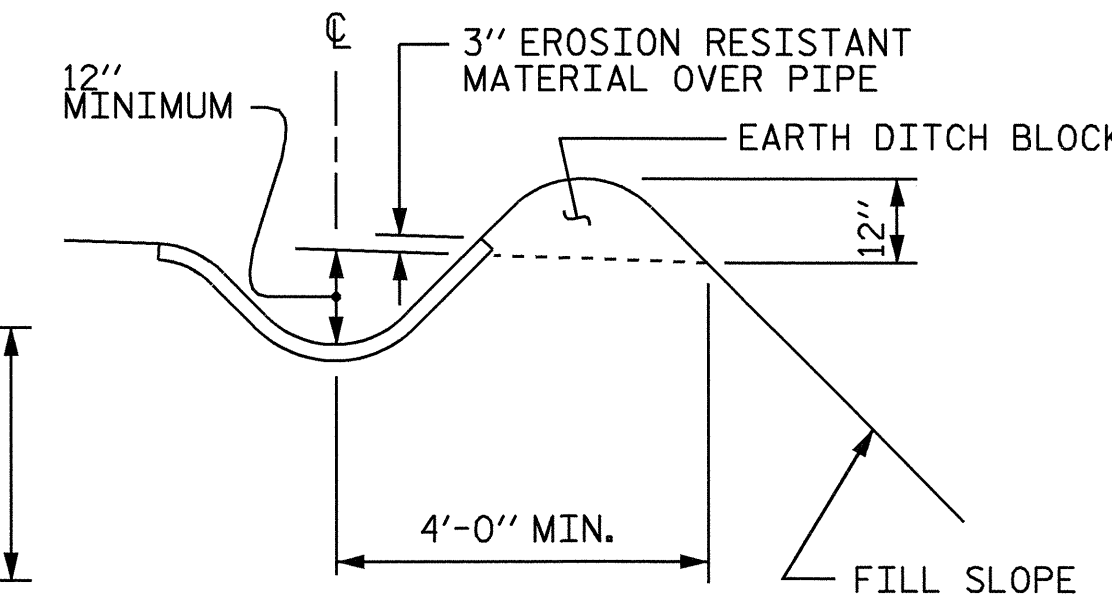
NOTE: IF THE APPROACH SLAB IS NOT CONSTRUCTED IMMEDIATELY AFTER THE BACKFILLING OF THE END BENT EXCAVATION, GRADE TO DRAIN TO THE BOTTOM OF THE SLOPE AND PROVIDE EROSION RESISTANT MATERIAL, SUCH AS FIBERGLASS ROVING OR AS DIRECTED BY THE ENGINEER TO PREVENT SOIL EROSION AND TO PROTECT THE AREA ADJACENT TO THE STRUCTURE. THE CONTRACTOR WILL BE REQUIRED TO REMOVE THESE MATERIALS PRIOR TO CONSTRUCTION OF THE APPROACH SLAB.

TEMPORARY DRAINAGE DETAIL

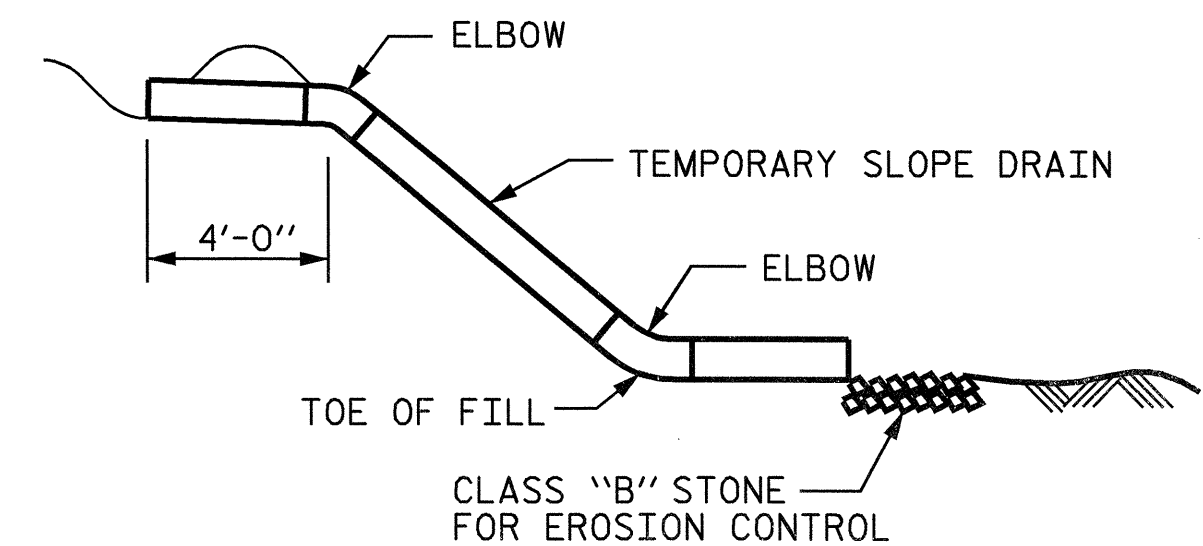


NOTE: IMMEDIATELY AFTER THE CONSTRUCTION OF THE APPROACH SLAB, THE CONTRACTOR SHALL PROVIDE TEMPORARY BERM AND SLOPE DRAIN. CONTRACTOR SHALL GRADE TO PIPE INLET AND PROVIDE EROSION RESISTANT MATERIAL AS SHOWN. THE EROSION RESISTANT MATERIAL SHALL BE EITHER 1) ASPHALT PLANT MIX, TYPE 1 OR TYPE 2, MIN. 2" DEPTH, 2) EROSION CONTROL MAT, OR 3) CONCRETE, AS DIRECTED BY THE ENGINEER. THE SLOPE DRAIN SHALL CONSIST OF A NON-PERFORATED TEMPORARY DRAINAGE PIPE, 12 INCHES IN DIAMETER.

PLAN VIEW

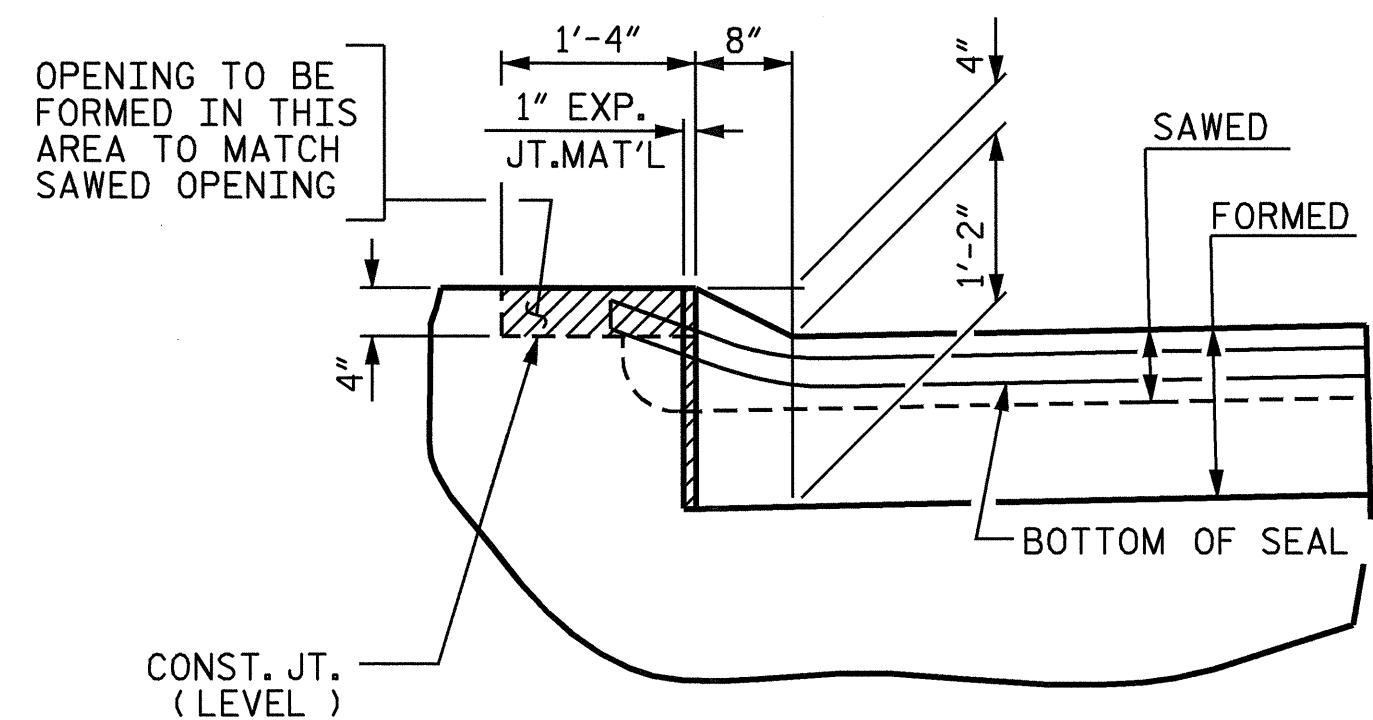


SECTION S-S

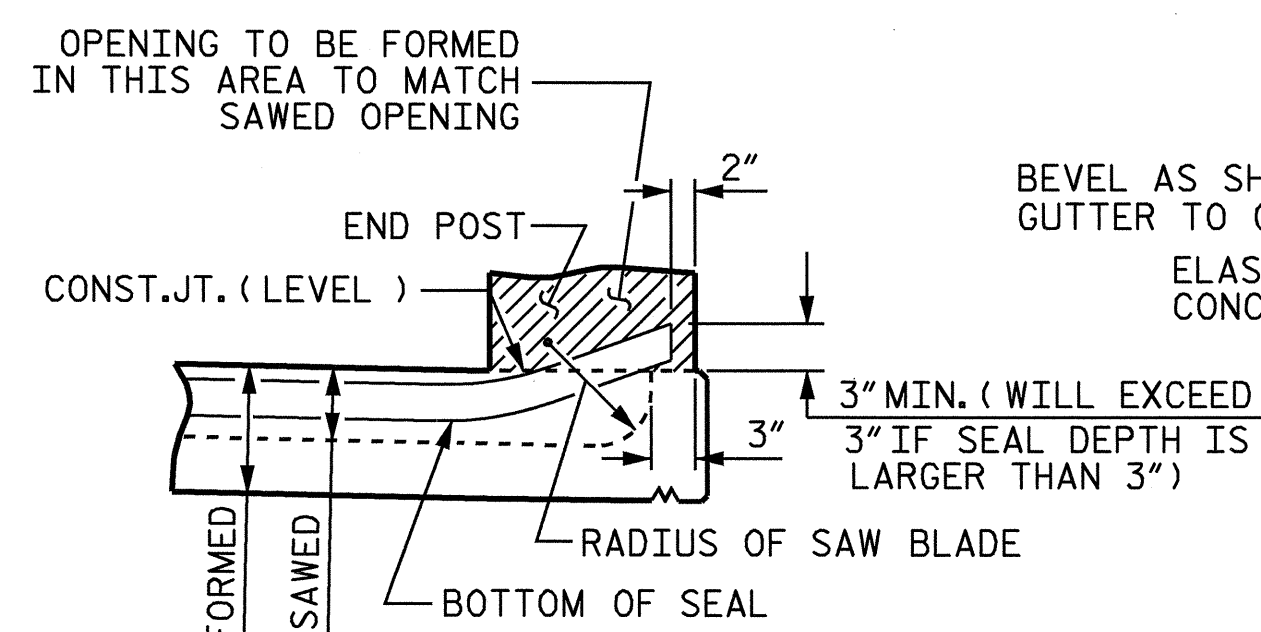


SECTION R-R

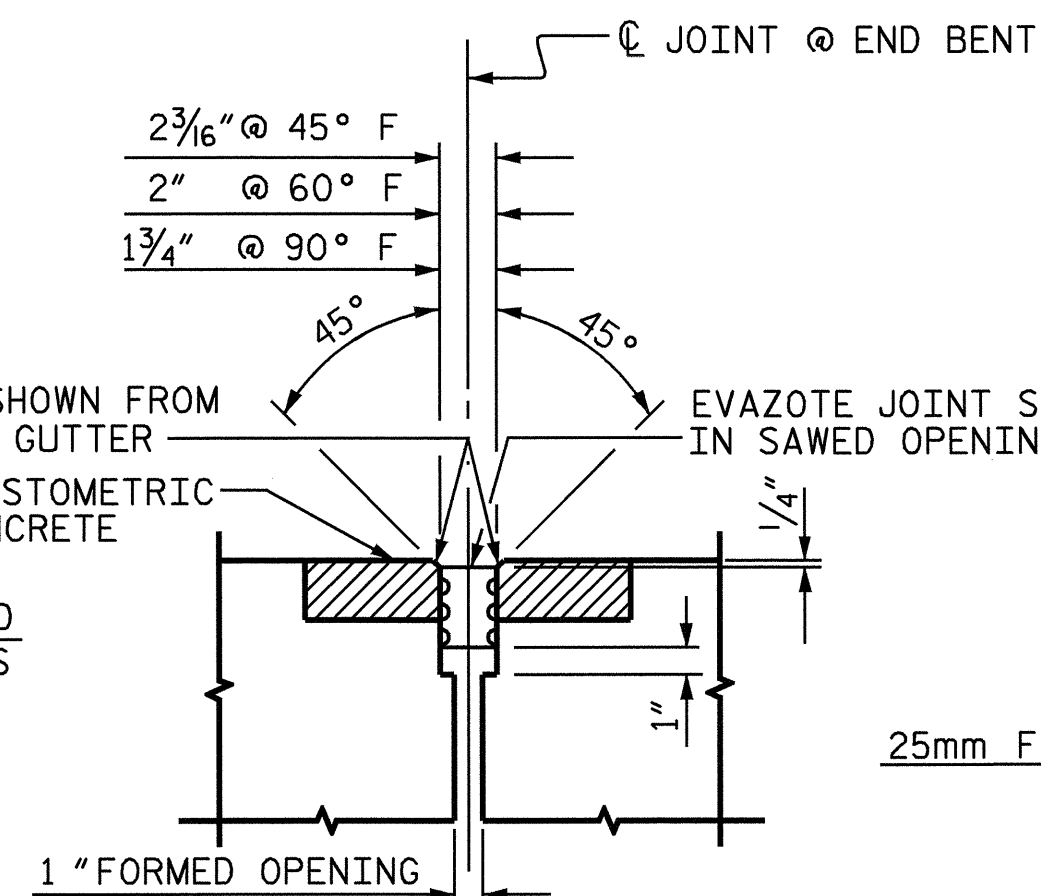
TEMPORARY BERM AND SLOPE DRAIN DETAILS



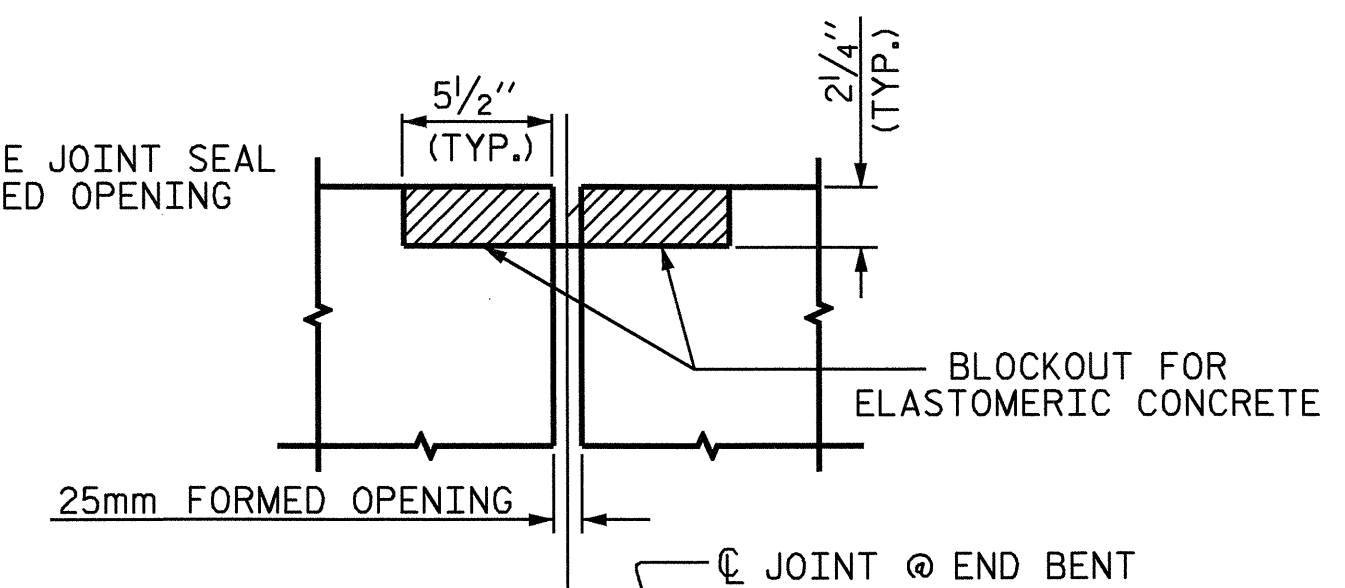
SECTION B-B



SECTION A-A



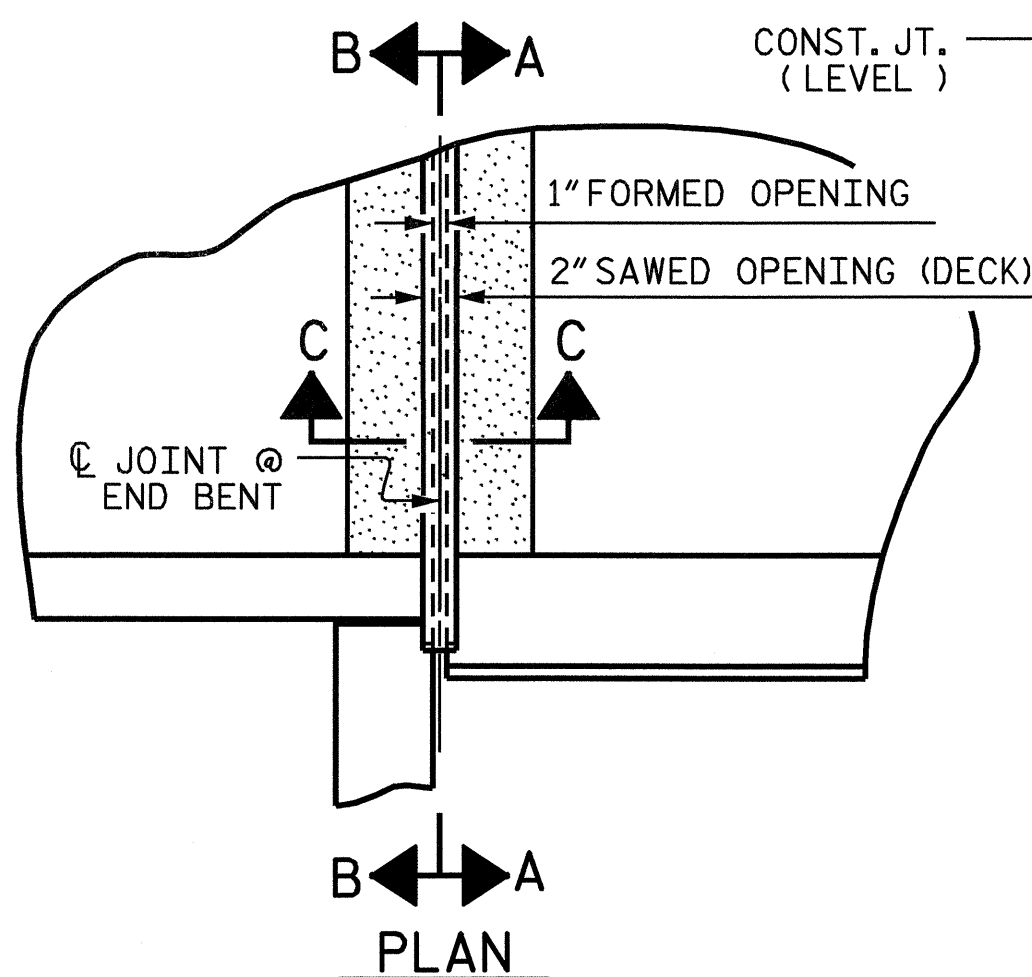
SECTION C-C
(EVAZOTE JOINT SEAL @ EB #1 & #2)
(FOR EVAZOTE JOINT SEAL SEE SPECIAL PROVISIONS)



SECTION C-C
(EVAZOTE JOINT SEAL @ EB #1 & #2)
(PRE- SAWS ELASTOMERIC CONCRETE DIMENSIONS)

TYPICAL EVAZOTE JOINT SEAL DETAILS @ END BENT

(FOR BARRIER RAIL)

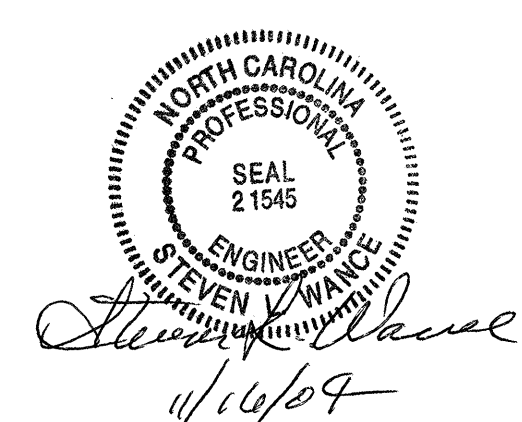


BILL OF MATERIAL		
END BENT NO.	ELASTOMERIC CONCRETE * (CU. FOOT)	
1	5.1	
2	5.1	

* BASED ON THE MINIMUM BLOCKOUT SHOWN.

PROJECT NO. B-3350
IREDELL COUNTY
STATION: 17+33.50 -L-

SHEET 3 OF 3



STATE OF NORTH CAROLINA
DEPARTMENT OF TRANSPORTATION
RALEIGH
STANDARD
BRIDGE APPROACH
SLAB DETAILS

REVISIONS				SHEET NO.	
NO.	BY:	DATE:	NO.	BY:	DATE:
1			3		
2			4		

TOTAL SHEETS: 35