

PROJECT REFERENCE NO.	SHEET NO.
B-3659	EC-4/CONST.4
RW SHEET NO.	
ROADWAY DESIGN ENGINEER	HYDRAULICS ENGINEER

BL-2 PINC 8+36.96=
 BY-5 PINC 8+47.36
 -L- STA 13+86.12 16.49' RT
 REBAR SET ELEV=3020.97'

UTILITIES
 CAROLINA POWER & LIGHT COMPANY
 I-800-452-2777
 BELLSOUTH
 (828) 780 2355
 TOWN OF WAYNESVILLE
 WATER DEPARTMENT
 129 LEGION DRIVE
 WAYNESVILLE, NC 28786
 (828) 456-3706
 WATERLINE LOCATIONS ARE APPROXIMATE.
 WATERLINE INFORMATION PROVIDED BY
 MUGILL & ASSOCIATES.

OBERIA WYATT BRYSON and
 LYNNE BRYSON
 D.B. 407 PG. 387

BL-1 5+00.00 POT
 -L- 10+43.53 12.95' RT
 REBAR SET ELEV. = 3027.38'

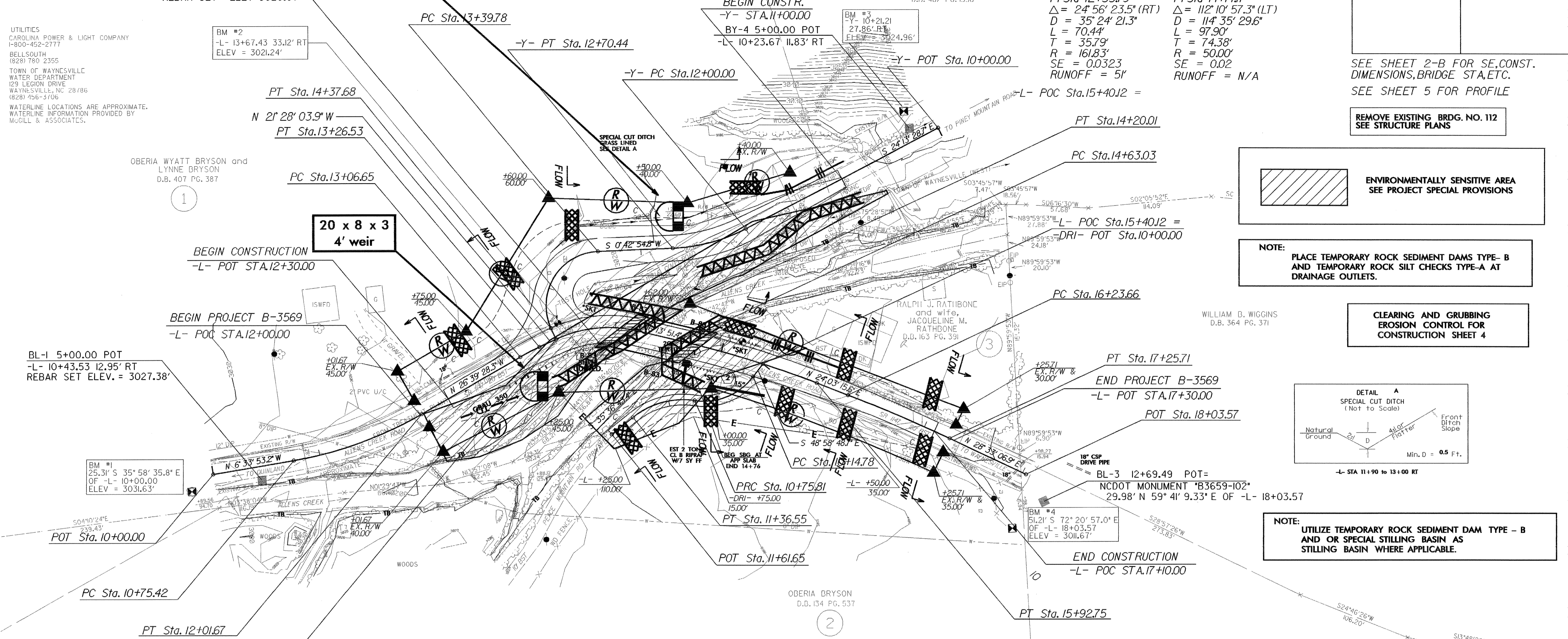
BM #1
 25.31' S 35° 58' 35.8" E
 OF -L- 10+00.00
 ELEV = 3031.63'

-Y- POT Sta.14+48.68 =
 -L- PC Sta.13+43.36

PI Sta 11+39.20 Δ = 20° 05' 35.1" (LT) D = 15° 54' 55.8" L = 126.25' T = 6.378' R = 360.00'	PI Sta 13+16.59 Δ = 5° 11' 24.4" (RT) D = 26° 06' 41.9" L = 19.88' T = 9.95' R = 219.43' SE = 0.02 RUNOFF = N/A	PI Sta 13+83.13 Δ = 37° 41' 55.3" (RT) D = 49° 10' 51.3" L = 76.65' T = 39.77' R = 116.50' SE = 0.02 RUNOFF = N/A	PI Sta 15+27.99 Δ = 7° 49' 24.2" (RT) D = 6° 01' 52.1" L = 129.72' T = 64.96' R = 950.00' SE = 0.02 RUNOFF = N/A
--	--	--	---

DESIGN EXCEPTION
 FOR DESIGN SPEED
 DS = 15 mph

NAD 83



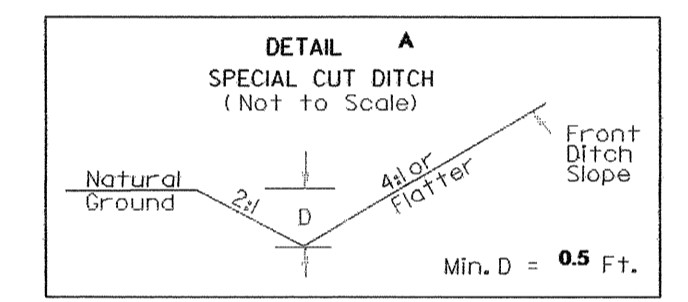
SEE SHEET 2-B FOR SE, CONST.
 DIMENSIONS, BRIDGE STA, ETC.
 SEE SHEET 5 FOR PROFILE

REMOVE EXISTING BRDG. NO. 112
 SEE STRUCTURE PLANS

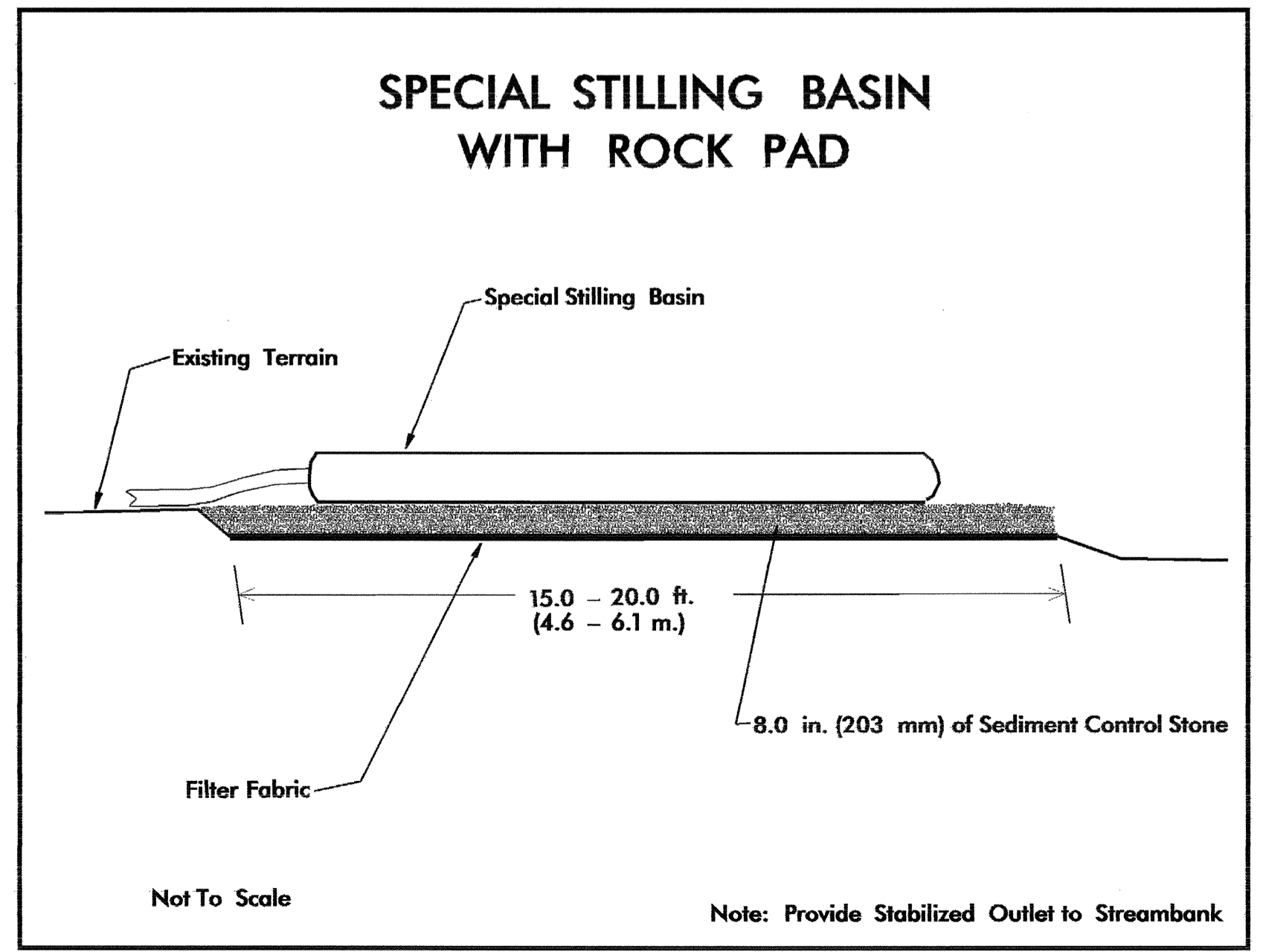


NOTE:
 PLACE TEMPORARY ROCK SEDIMENT DAMS TYPE-B
 AND TEMPORARY ROCK SILT CHECKS TYPE-A AT
 DRAINAGE OUTLETS.

CLEARING AND GRUBBING
 EROSION CONTROL FOR
 CONSTRUCTION SHEET 4

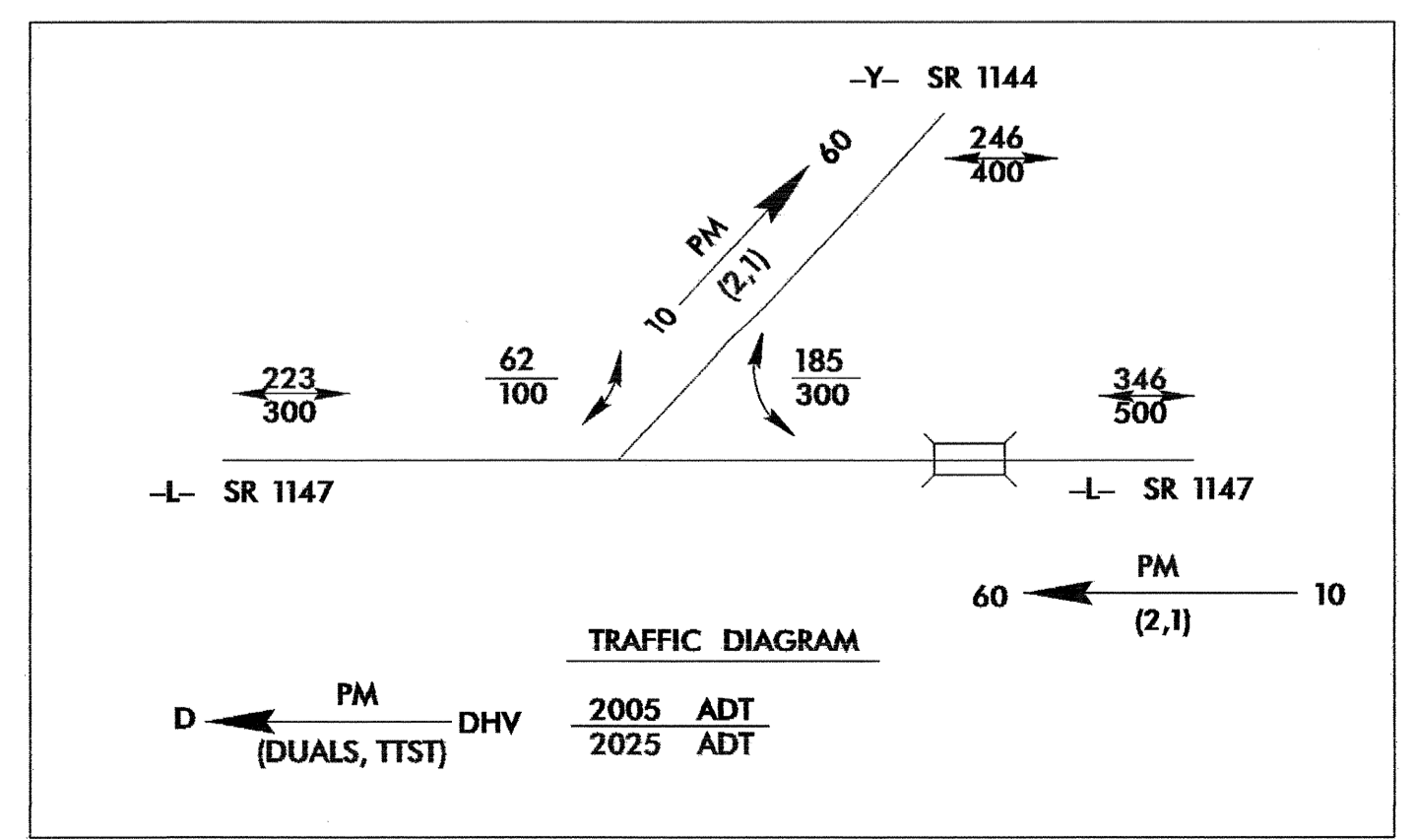


NOTE:
 UTILIZE TEMPORARY ROCK SEDIMENT DAM TYPE - B
 AND OR SPECIAL STILLING BASIN AS
 STILLING BASIN WHERE APPLICABLE.



Not To Scale

Note: Provide Stabilized Outlet to Streambank



WILLIAM B. WIGGINS
 D.B. 364 PG. 371

OBERIA BRYSON
 D.B. 134 PG. 537

TOWN OF WAYNESVILLE
 I.H. 487 PG. 1558

WILLIAM B. WIGGINS
 D.B. 364 PG. 371

RALPH J. RATHBONE
 and wife,
 JACQUELINE M.
 RATHBONE
 D.B. 163 PG. 391