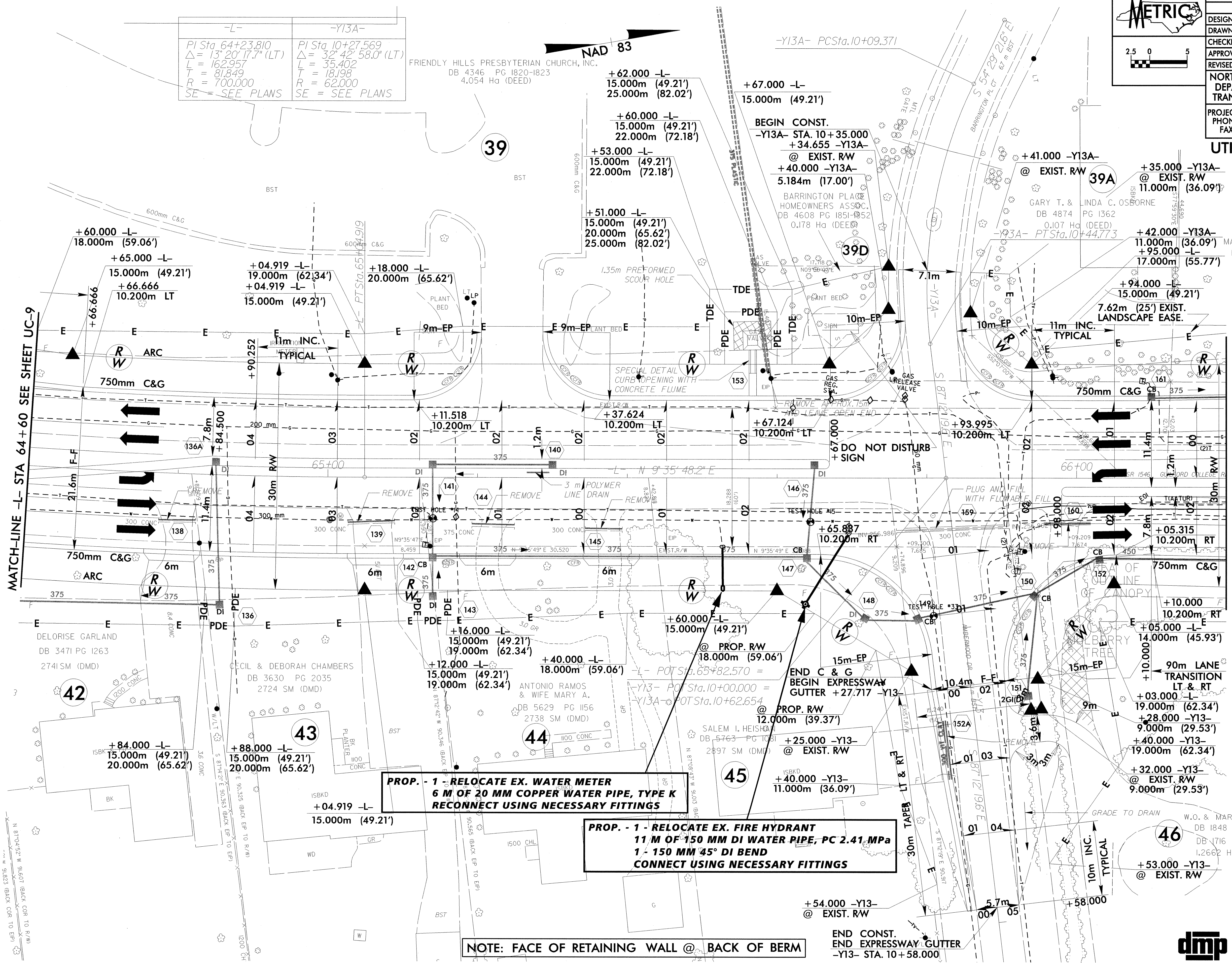


PROJECT REFERENCE NO.	U-2913B	SHEET NO.	UC-10
DESIGNED BY:	DMP		
DRAWN BY:	DMP		
CHECKED BY:	DMP		
APPROVED BY:			
REVISED:			
NORTH CAROLINA DEPARTMENT OF TRANSPORTATION		UTILITY CONSTRUCTION PLANS ONLY	
PROJECT SERVICES UNIT PHONE: (919) 250-4128 FAX: (919) 250-4119		MARK A. & ANCHALEE HARMS DB 4805 PG 664 0.145 Ha (DEED)	

**UTILITY CONSTRUCTION**

-L-	-Y13A-
PI Sta 64+23.810	PI Sta 10+27.569
$\Delta = 13^{\circ} 20' 17.7" (LT)$	$\Delta = 32^{\circ} 42' 58.0" (LT)$
L = 162.957	L = 35.402
T = 81.849	T = 18.198
R = 700.000	R = 62.000
SE = SEE PLANS	SE = SEE PLANS

FRIENDLY HILLS PRESBYTERIAN CHURCH, INC.  
DB 4346 PG 1820-1823  
4.054 Ha (DEED)



MATCH-LINE -L- STA 64+60 SEE SHEET UC-9

**PROP. - 1 - RELOCATE EX. WATER METER  
6 M OF 20 MM COPPER WATER PIPE, TYPE K  
RECONNECT USING NECESSARY FITTINGS**

**PROP. - 1 - RELOCATE EX. FIRE HYDRANT  
11 M OF 150 MM DI WATER PIPE, PC 2.41 MPa  
1 - 150 MM 45° DI BEND  
CONNECT USING NECESSARY FITTINGS**

**NOTE: FACE OF RETAINING WALL @ BACK OF BERM**

**NOTE: DO NOT DISTURB  
MULBERRY TREE.  
TIE TO EXISTING JOINT  
FOR DRIVEWAY.**