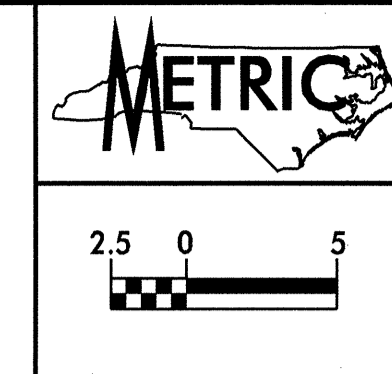
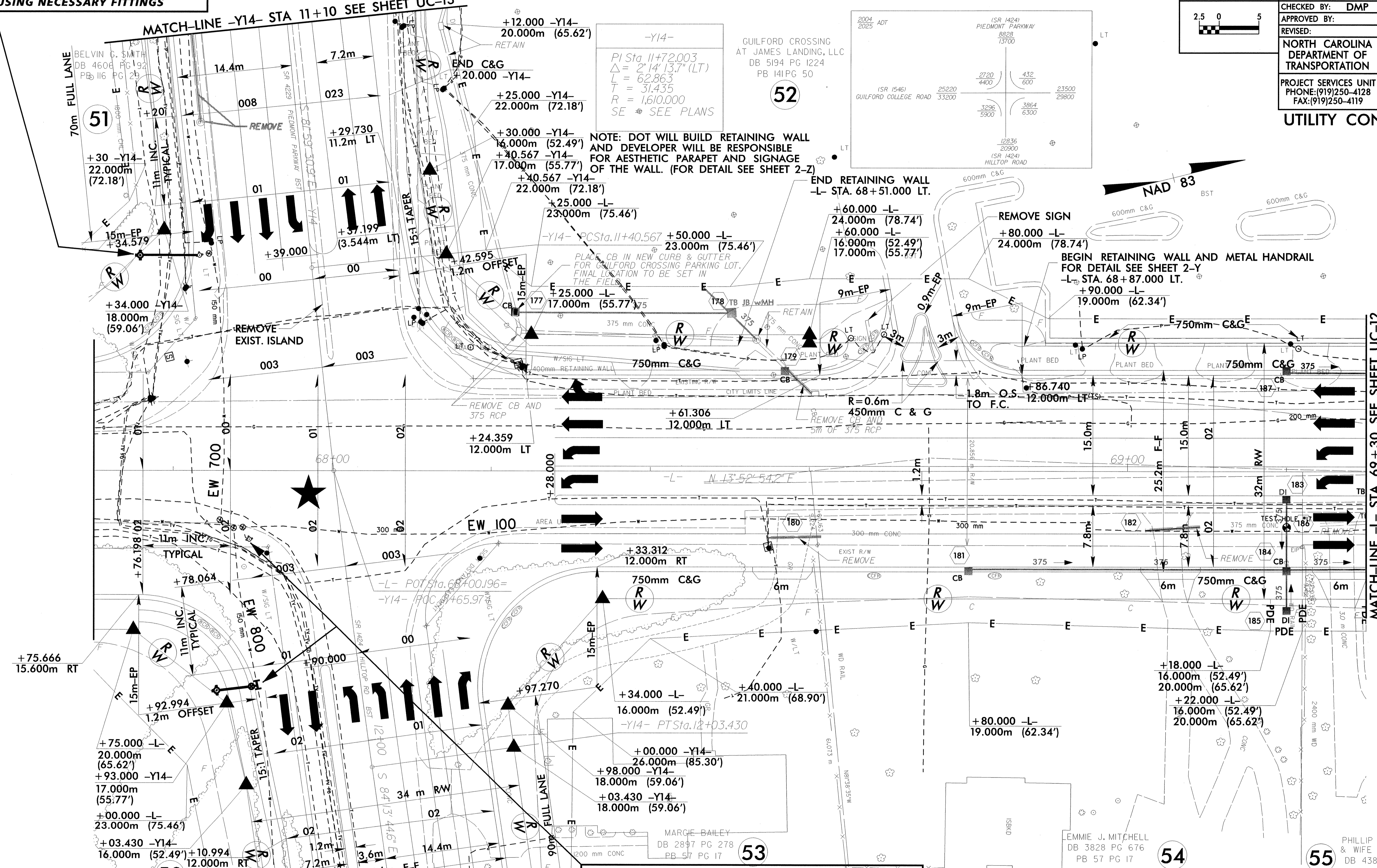


**PROP. - 1 - RELOCATE EX. FIRE HYDRANT
8 M OF 150 MM DI WATER PIPE, PC 2.41 MPa
CONNECT USING NECESSARY FITTINGS**



PROJECT REFERENCE NO. U-2913B	SHEET NO. UC-11
DESIGNED BY: DMP	
DRAWN BY: DMP	
CHECKED BY: DMP	
APPROVED BY:	
REVISED:	
NORTH CAROLINA DEPARTMENT OF TRANSPORTATION	
PROJECT SERVICES UNIT PHONE: (919) 250-4128 FAX: (919) 250-4119	UTILITY CONSTRUCTION PLANS ONLY

UTILITY CONSTRUCTION



-Y14-
PI Sta. 11+72.003
 $\Delta = 2' 14" (3.7' (LT))$
 $L = 62.863$
 $T = 31.435$
 $R = 1,610.000$
SE * SEE PLANS

NOTE: DOT WILL BUILD RETAINING WALL AND DEVELOPER WILL BE RESPONSIBLE FOR AESTHETIC PARAPET AND SIGNAGE OF THE WALL. (FOR DETAIL SEE SHEET 2-Z)

**PROP. - 1 - RELOCATE EX. FIRE HYDRANT
1 - 150 MM X 150 MM TAPPING SLEEVE, VALVE AND VALVE BOX, 1.38 MPa WP
5 M OF 150 MM DI WATER PIPE, PC 2.41 MPa
CONNECT USING NECESSARY FITTINGS**

NOTE: FACE OF RETAINING WALL @ BACK OF BERM

NOTE: SIGNAL IS PART OF HIGH POINT SIGNAL SYSTEM

NOTE: BEGIN 1.5m CONC. SIDEWALK -Y14- STA. 11+79.833 RT.

★ SIGNALIZED INTERSECTION

UTILITY CONSTRUCTION PLANS DESIGNED BY:
dmp DAVIS-MARTIN-POWELL & ASSOC., INC.
ENGINEERING-LAND PLANNING-SURVEYING
HIGH POINT, NORTH CAROLINA

11/10/2014 10:40:13 AM
 U-2913B-updates-10-94-uc-11.dwg 9/16/2014 10:40:13 AM