

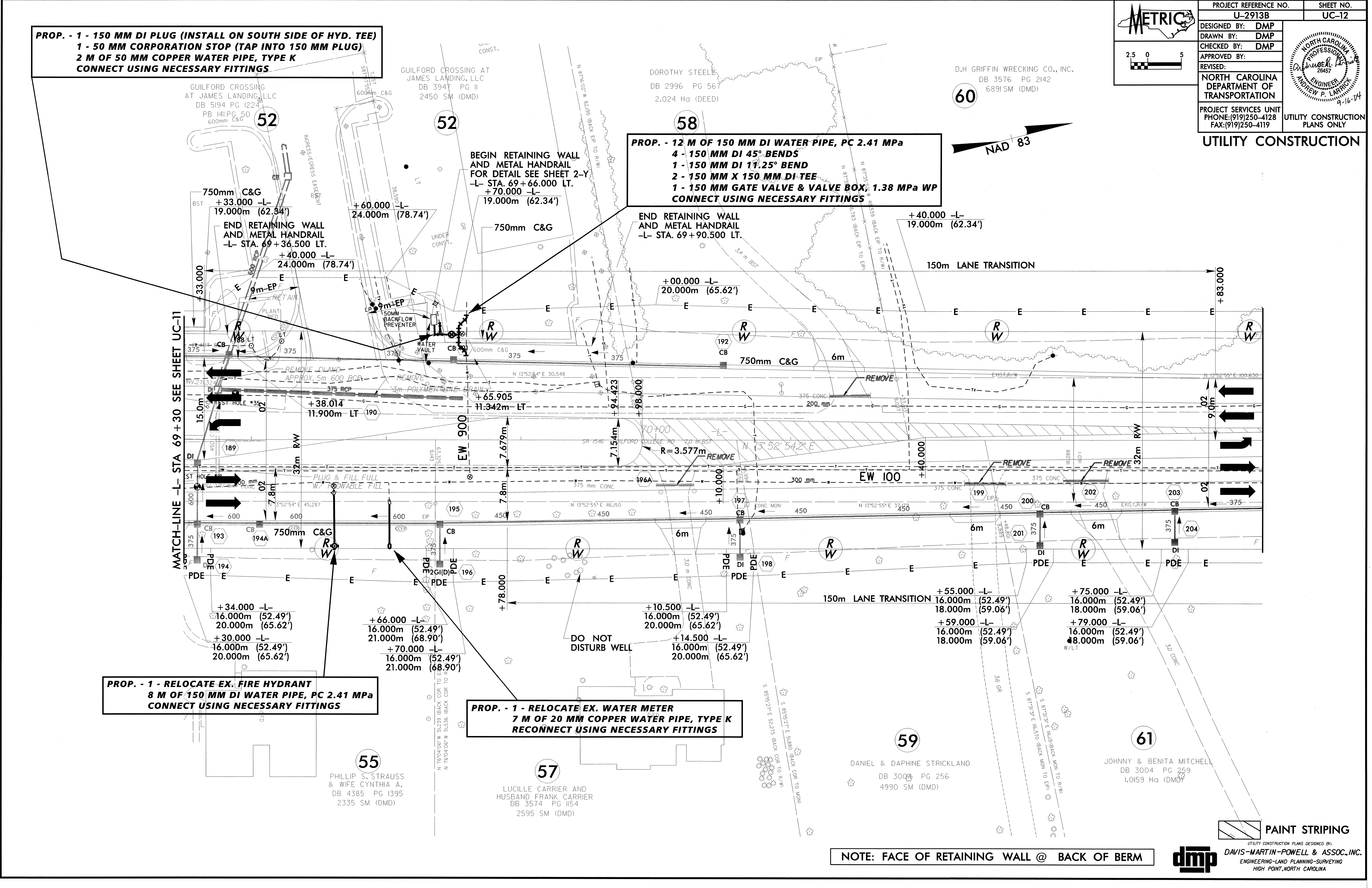
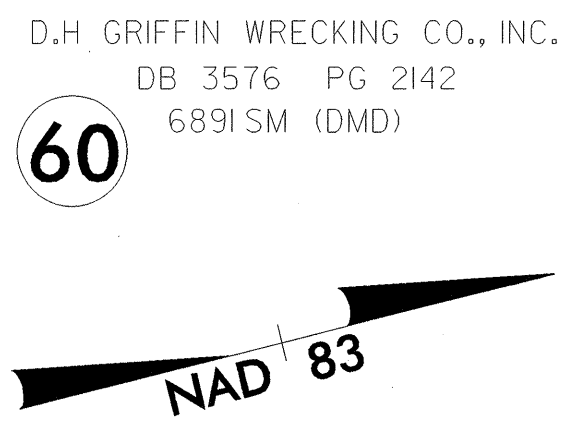
PROJECT REFERENCE NO. U-2913B	SHEET NO. UC-12
DESIGNED BY: DMP	
DRAWN BY: DMP	
CHECKED BY: DMP	
APPROVED BY:	
REVISED:	
NORTH CAROLINA DEPARTMENT OF TRANSPORTATION PROJECT SERVICES UNIT PHONE: (919) 250-4128 FAX: (919) 250-4119	
UTILITY CONSTRUCTION PLANS ONLY	

**PROP. - 1 - 150 MM DI PLUG (INSTALL ON SOUTH SIDE OF HYD. TEE)  
1 - 50 MM CORPORATION STOP (TAP INTO 150 MM PLUG)  
2 M OF 50 MM COPPER WATER PIPE, TYPE K  
CONNECT USING NECESSARY FITTINGS**

**PROP. - 12 M OF 150 MM DI WATER PIPE, PC 2.41 MPa  
4 - 150 MM DI 45° BENDS  
1 - 150 MM DI 17.25° BEND  
2 - 150 MM X 150 MM DI TEE  
1 - 150 MM GATE VALVE & VALVE BOX, 1.38 MPa WP  
CONNECT USING NECESSARY FITTINGS**

**PROP. - 1 - RELOCATE EX. FIRE HYDRANT  
8 M OF 150 MM DI WATER PIPE, PC 2.41 MPa  
CONNECT USING NECESSARY FITTINGS**

**PROP. - 1 - RELOCATE EX. WATER METER  
7 M OF 20 MM COPPER WATER PIPE, TYPE K  
RECONNECT USING NECESSARY FITTINGS**



NOTE: FACE OF RETAINING WALL @ BACK OF BERM

