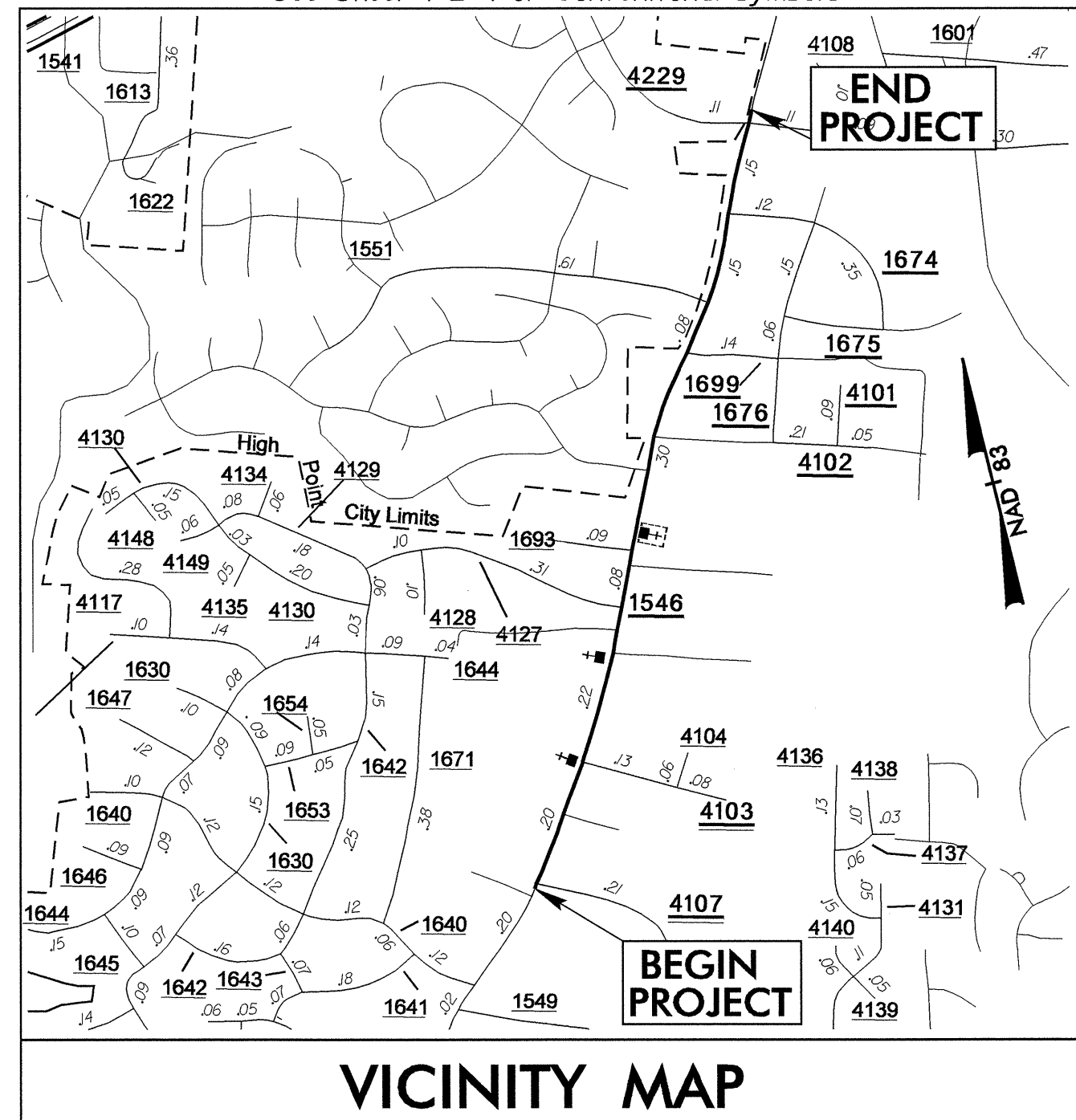


See Sheet 1-A For Index of Sheets
See Sheet 1-B For Conventional Symbols



VICINITY MAP

STATE OF NORTH CAROLINA
DIVISION OF HIGHWAYS

**UTILITIES BY OTHERS PLANS
GUILFORD COUNTY**

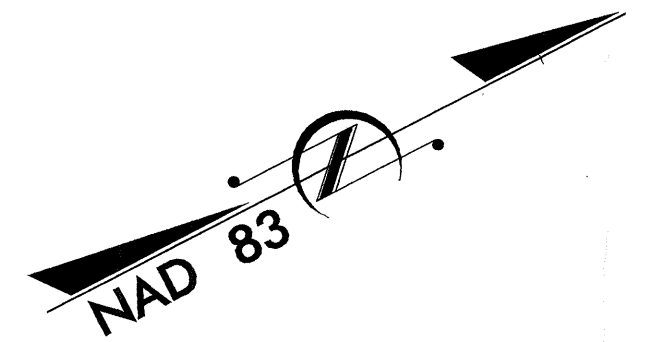
**LOCATION: SR 1546 (GUILFPRD COLLEGE ROAD) FROM
NORTH OF SR 1549 (MACKAY ROAD) TO
SOUTH OF SR 1541 (WENDOVER AVE.)**

TYPE OF WORK: UTILITIES

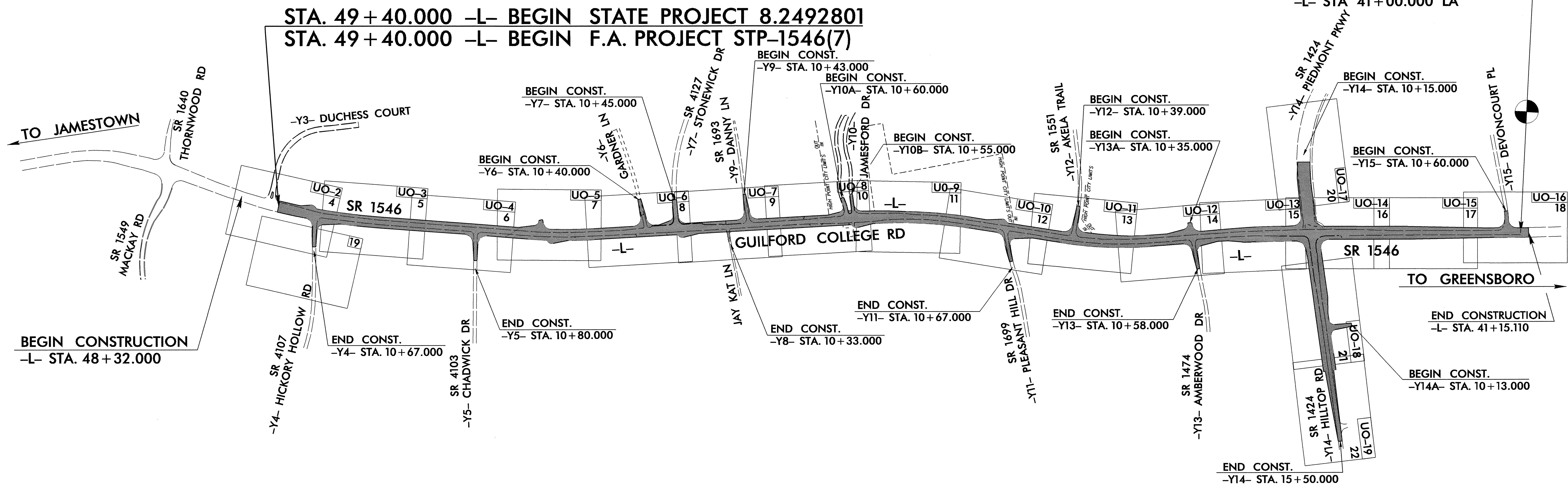
STA. 71+83.981 -L- END STATE PROJECT 8.2492801
STA. 71+83.981 -L- END F.A. PROJECT STP-1546(7)



T.I.P. NO.	SHEET NO.
U-2913B	UO-1

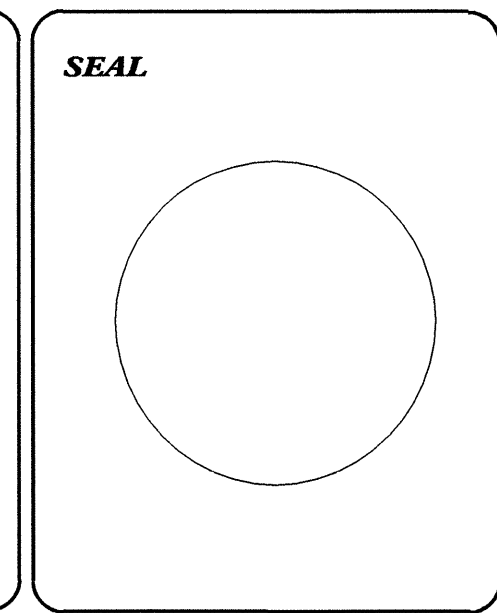


TIP: U-2913B



INDEX OF SHEETS	
SHEET NO.	DESCRIPTION
UO-1	TITLE SHEET
UO-X THRU UO-XX	UTILITIES BY OTHERS PLAN SHEETS

UTILITY OWNERS ON PROJECT
(1) DUKE ENERGY CORPORATION
(2) NORTH STATE COMMUNICATIONS
(3) BELL SOUTH TELECOMMUNICATIONS
(4) TIME WARNER CABLE
(5) PIEDMONT NATURAL GAS
(6) COLONIAL PIPELINE



DEPARTMENT OF TRANSPORTATION

PREPARED IN THE OFFICE OF:
**DIVISION OF HIGHWAYS
PROJECT SERVICES
UTILITY SECTION**

1591 MAIL SERVICES CENTER
RALEIGH NC 27699-1591
PHONE (919) 250-4128
FAX (919) 250-4119

Roger Worthington, P.E. UTILITIES SECTION ENGINEER
Steve Mckee, P.E. UTILITIES SQUAD LEADER PROJECT ENGINEER
Alonza Yancey UTILITIES PROJECT DESIGNER DATE