

UTILITIES BY OTHERS

NOTE: ALL PROPOSED UTILITY WORK SHOWN ON THIS SHEET WILL BE DONE BY OTHERS

D.J. GRIFFIN WRECKING CO., INC. DB 3576 PG 2142 6891 SM (DMD)

60



GUILFORD CROSSING AT JAMES LANDING, LLC DB 5194 PG 1224 PB 141 PG 50 600mm C&G

52

GUILFORD CROSSING AT JAMES LANDING, LLC DB 3947 PG II 2450 SM (DMD)

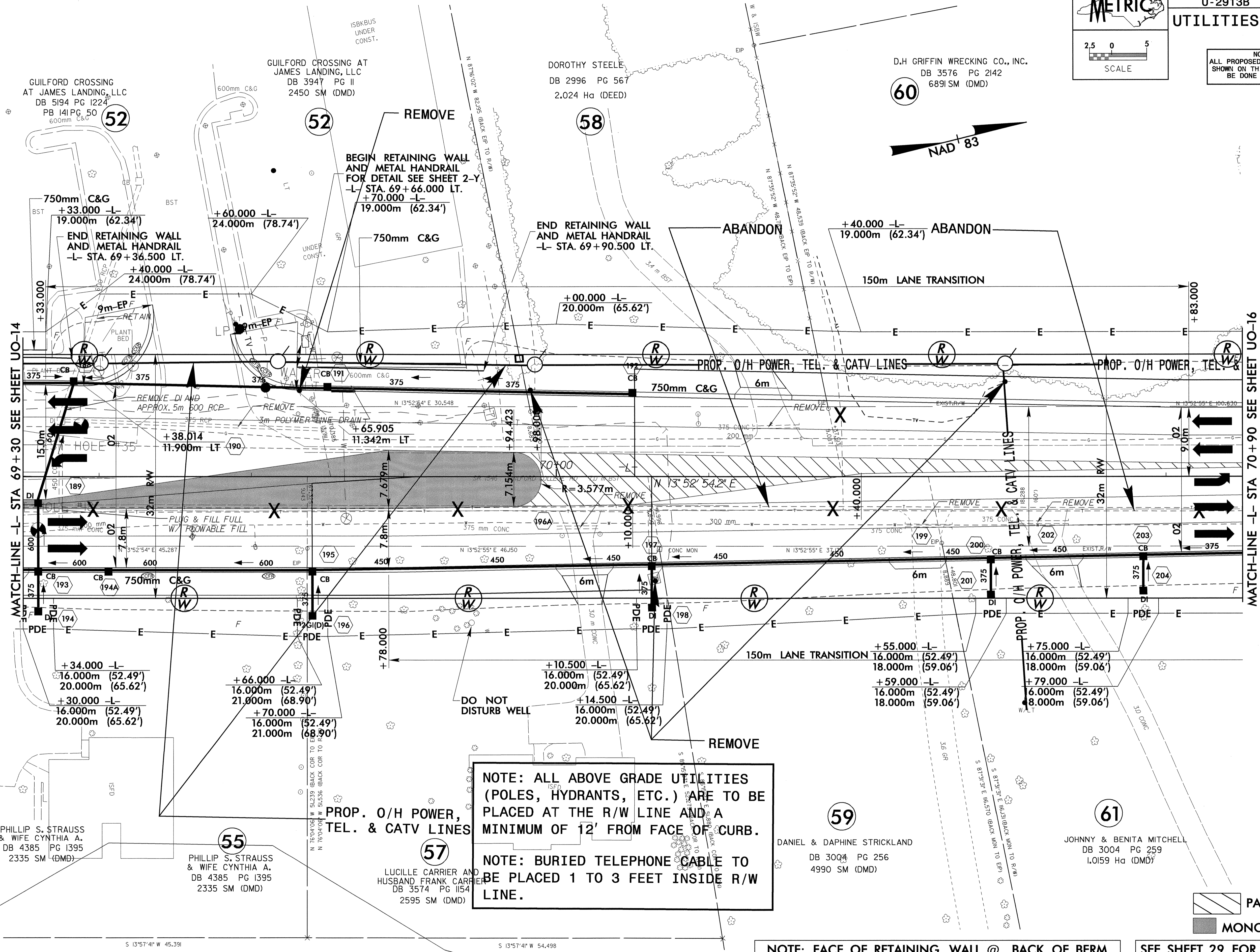
52

DOROTHY STEELE DB 2996 PG 567 2,024 Ha (DEED)

58

MATCH-LINE -L- STA 69+30 SEE SHEET UO-14

MATCH-LINE -L- STA 70+90 SEE SHEET UO-16



NOTE: ALL ABOVE GRADE UTILITIES (POLES, HYDRANTS, ETC.) ARE TO BE PLACED AT THE R/W LINE AND A MINIMUM OF 12' FROM FACE OF CURB.
NOTE: BURIED TELEPHONE CABLE TO BE PLACED 1 TO 3 FEET INSIDE R/W LINE.

55 PHILLIP S. STRAUSS & WIFE CYNTHIA A. DB 4385 PG 1395 2335 SM (DMD)

55

55 PHILLIP S. STRAUSS & WIFE CYNTHIA A. DB 4385 PG 1395 2335 SM (DMD)

55

57 PROP. O/H POWER, TEL. & CATV LINES

57 LUCILLE CARRIER AND HUSBAND FRANK CARRIER DB 3574 PG II54 2595 SM (DMD)

59 DANIEL & DAPHNE STRICKLAND DB 3004 PG 256 4990 SM (DMD)

59

61 JOHNNY & BENITA MITCHELL DB 3004 PG 259 1,0159 Ha (DMD)

61



NOTE: FACE OF RETAINING WALL @ BACK OF BERM

SEE SHEET 29 FOR -L- PROFILE SEE SHEET 39 FOR WALL PROFILES

042597
07-OCT-2004 12:47 PM u2913bs_uo15.dwg
author: j...
plotter: ...