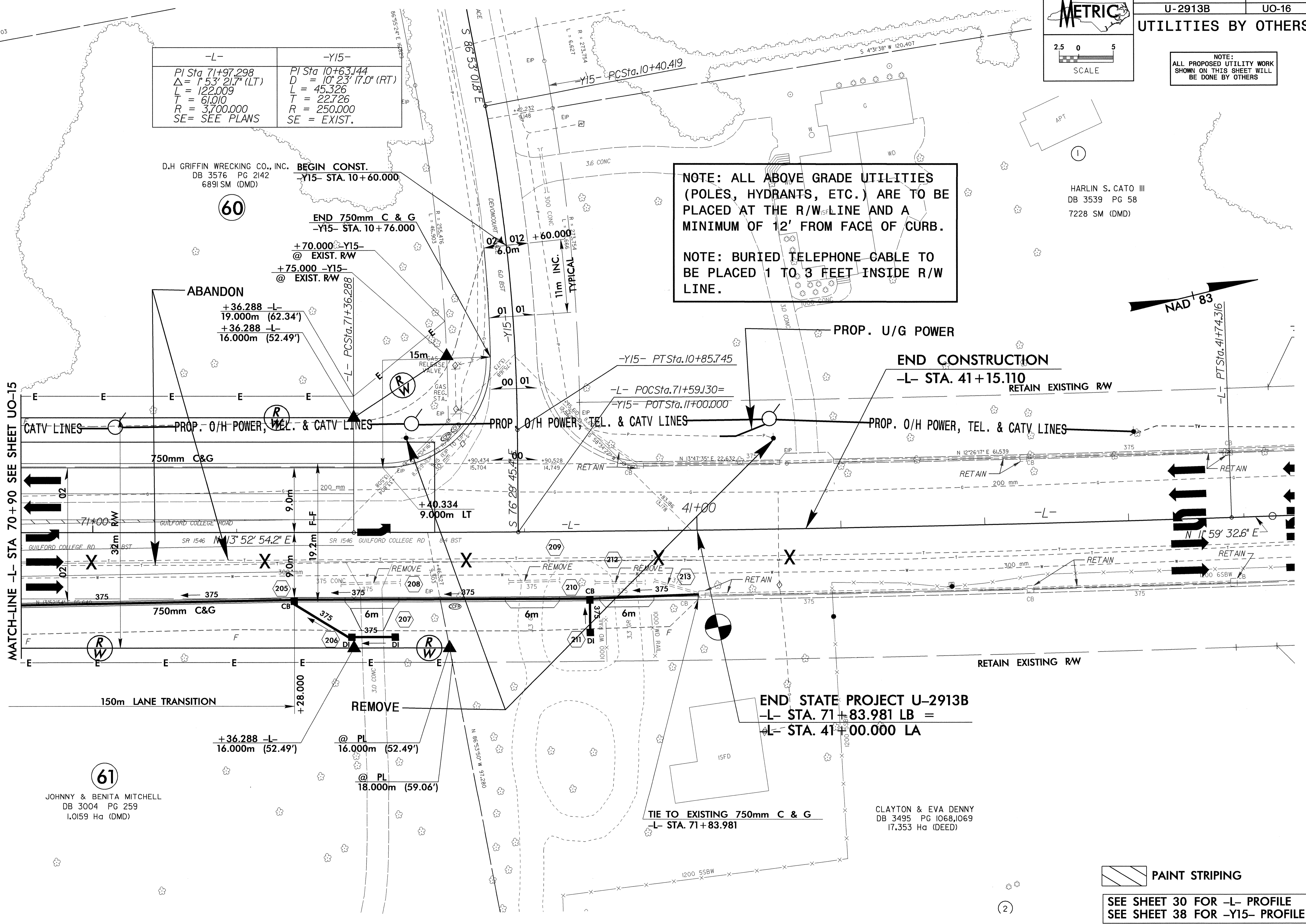


NOTE:
 ALL PROPOSED UTILITY WORK
 SHOWN ON THIS SHEET WILL
 BE DONE BY OTHERS

-L-	-Y15-
PI Sta 71+97.298	PI Sta 10+63.144
$\Delta = 1' 53' 21.7''$ (LT)	$D = 10' 23' 17.0''$ (RT)
L = 122.009	L = 45.326
T = 61.010	T = 22.726
R = 3,700.000	R = 250.000
SE = SEE PLANS	SE = EXIST.

NOTE: ALL ABOVE GRADE UTILITIES
 (POLES, HYDRANTS, ETC.) ARE TO BE
 PLACED AT THE R/W LINE AND A
 MINIMUM OF 12' FROM FACE OF CURB.

 NOTE: BURIED TELEPHONE CABLE TO
 BE PLACED 1 TO 3 FEET INSIDE R/W
 LINE.



D.H. GRIFFIN WRECKING CO., INC.
 DB 3576 PG 2142
 6891 SM (DMD)

HARLIN S. CATO III
 DB 3539 PG 58
 7228 SM (DMD)

JOHNNY & BENITA MITCHELL
 DB 3004 PG 259
 1.0159 Ha (DMD)

CLAYTON & EVA DENNY
 DB 3495 PG 1068,1069
 17.353 Ha (DEED)

PAINT STRIPING

SEE SHEET 30 FOR -L- PROFILE
 SEE SHEET 38 FOR -Y15- PROFILE

07-OCT-2004 13:47 C:\p02\2913bs_UO16.psh