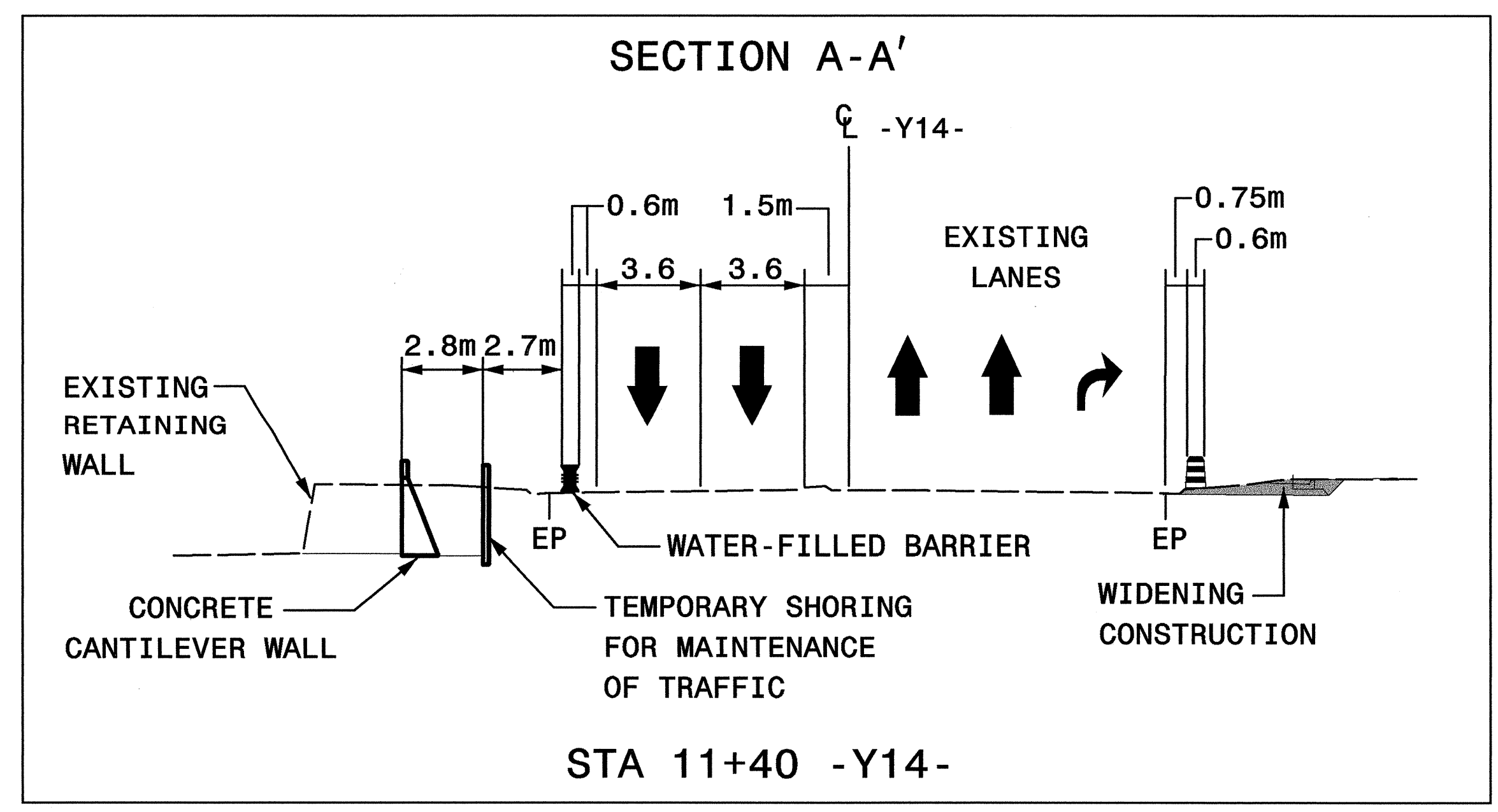
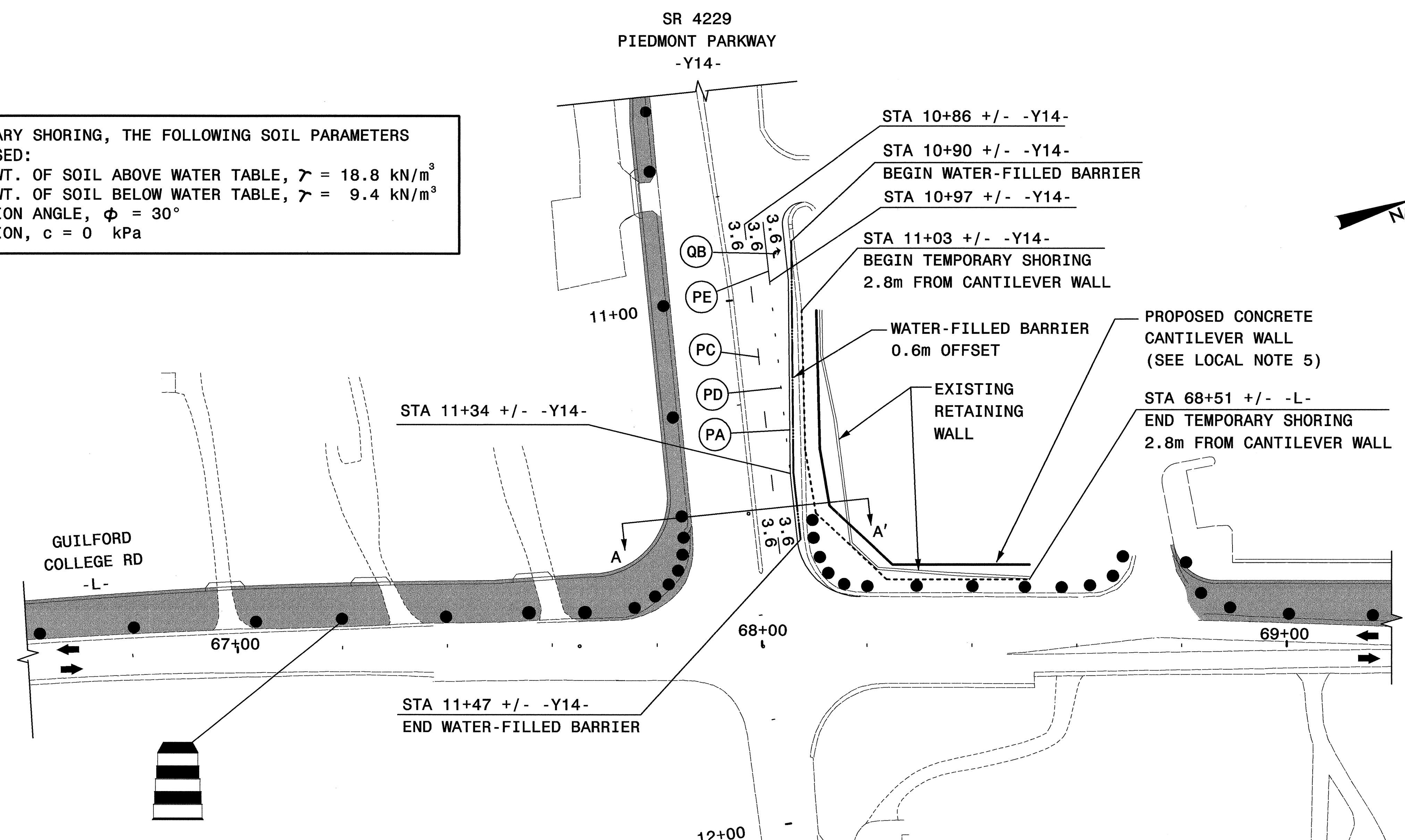
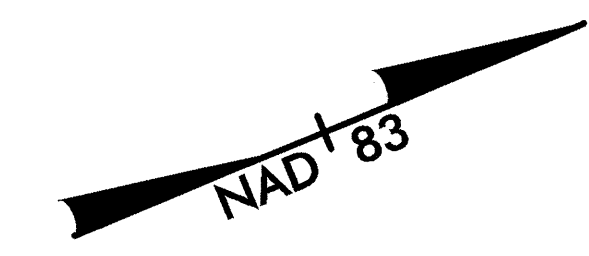




PROJ. REFERENCE NO.	SHEET NO.
U-2913B	TCP-6A

GREENHORNE & O'MARA, INC.  
 5565 CENTERVIEW DRIVE, SUITE 107  
 RALEIGH, NORTH CAROLINA 27606  
 (919) 851-1919

FOR TEMPORARY SHORING, THE FOLLOWING SOIL PARAMETERS SHALL BE USED:  
 UNIT WT. OF SOIL ABOVE WATER TABLE,  $\gamma = 18.8 \text{ kN/m}^3$   
 UNIT WT. OF SOIL BELOW WATER TABLE,  $\gamma = 9.4 \text{ kN/m}^3$   
 FRICTION ANGLE,  $\phi = 30^\circ$   
 COHESION,  $c = 0 \text{ kPa}$



**LEGEND**  
 = PROPOSED CONSTRUCTION

NOTE: SEE GENERAL NOTE (Z) FOR SPACING OF CHANNELIZING DEVICES.

APPROVED: <i>Donna C. Keener</i> DATE: 10/12/04	<b>DETAIL FOR SHORING LOCATION</b>	
	SCALE: NONE	
	DATE: 10/7/04	
	DWG. BY: PMW	
	DESIGN BY: PMW	
REVIEWED BY: DCK	REVISIONS	

SYSTEMS  
 SUPERVISOR