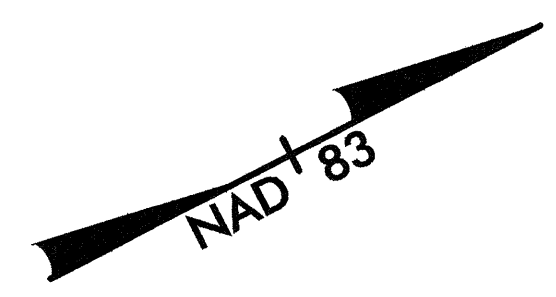


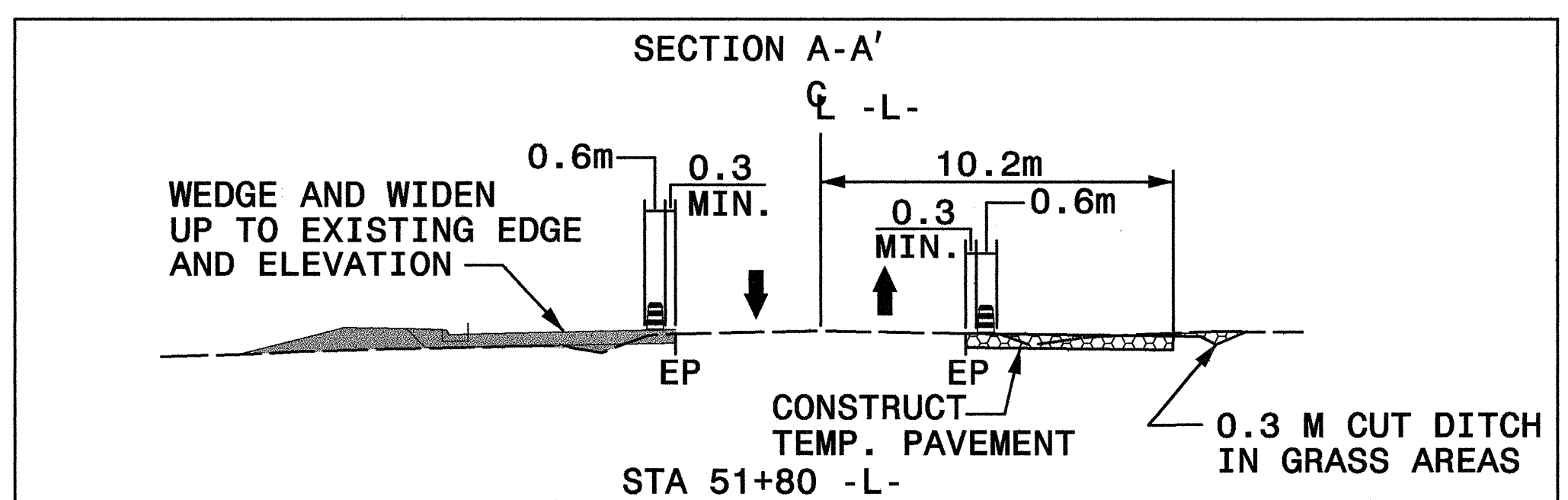
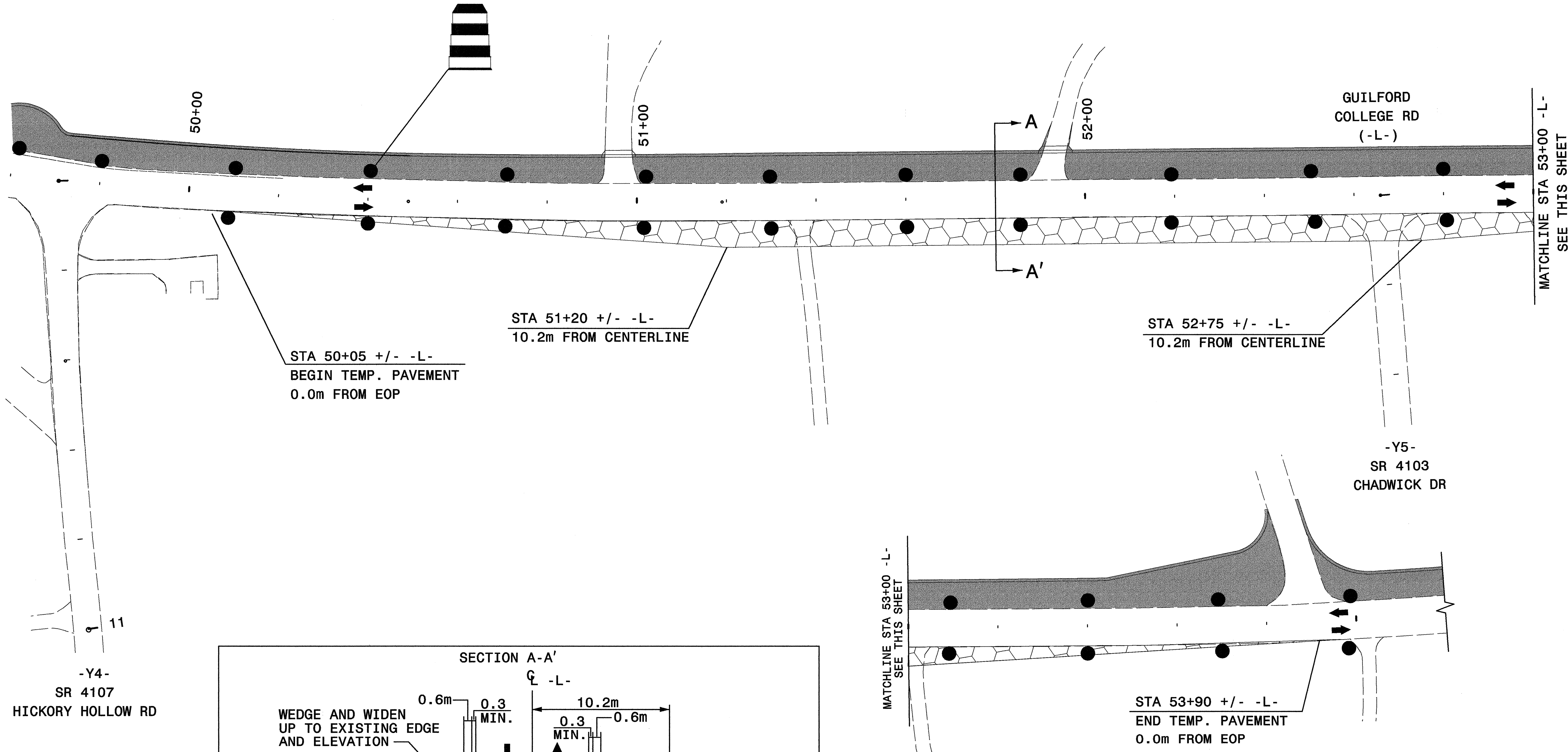


PROJ. REFERENCE NO.	SHEET NO.
U-2913B	TCP-7

GREENHORNE & O'MARA, INC.
 5565 CENTERVIEW DRIVE, SUITE 107
 RALEIGH, NORTH CAROLINA 27606
 (919) 851-1919



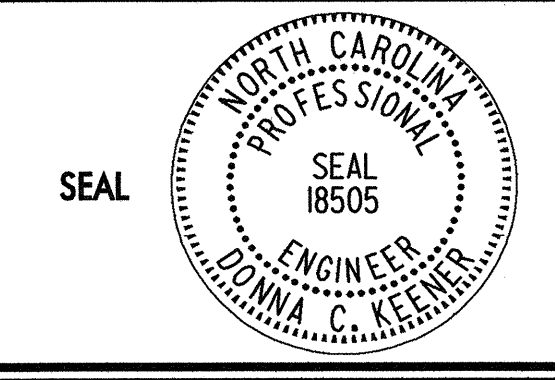
NOTE: SEE GENERAL NOTE (Z) FOR SPACING OF CHANNELIZING DEVICES.



NOTE: THIS CUT SECTION IS TYPICAL FOR ALL TEMPORARY PAVEMENT LOCATIONS. (SEE DETAIL I-B, I-C, AND I-D)

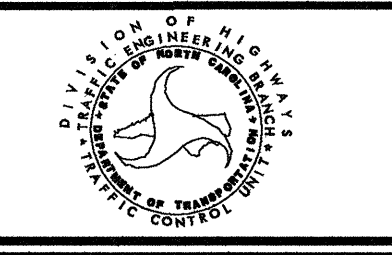
- LEGEND**
- = PROPOSED CONSTRUCTION
 - = TEMPORARY ASPHALT

APPROVED: *Donna C. Keener* DATE: 9/14/04



DETAIL I-A
TEMPORARY PAVEMENT CONSTRUCTION

SCALE:	NONE
DATE:	9/14/04
DWG. BY:	PMW
DESIGN BY:	JAP/PMW
REVIEWED BY:	DCK



REVISIONS	

\$\$\$\$\$SYTIME\$\$\$\$\$
 \$\$\$SERVICES\$\$\$\$\$