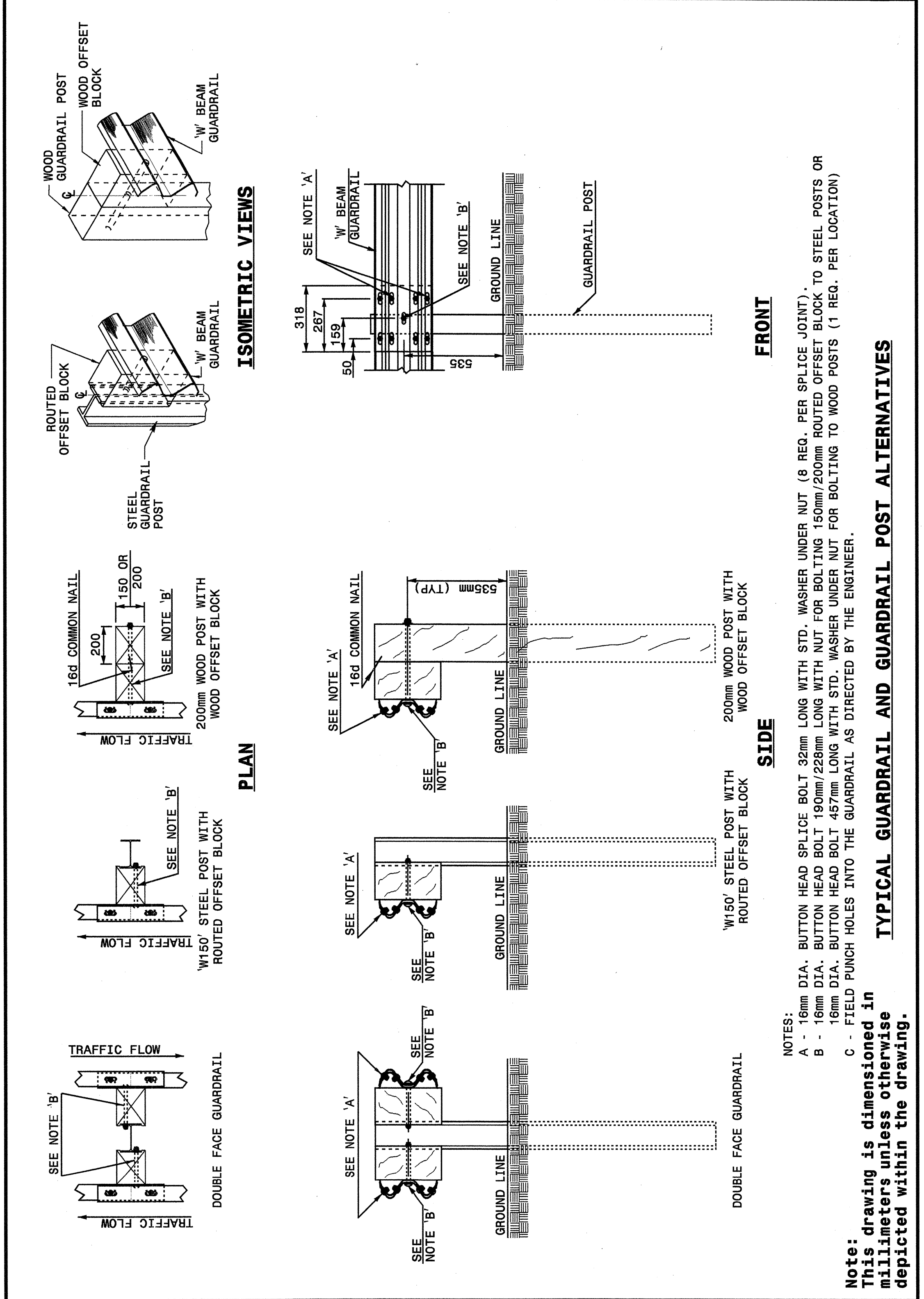




STATE OF NORTH CAROLINA  
DEPT. OF TRANSPORTATION  
DIVISION OF HIGHWAYS  
RALEIGH, N.C.

METRIC DETAIL DRAWING FOR  
GUARDRAIL INSTALLATION

SHEET 3 OF 7  
862D02



STATE OF NORTH CAROLINA  
DEPT. OF TRANSPORTATION  
DIVISION OF HIGHWAYS  
RALEIGH, N.C.

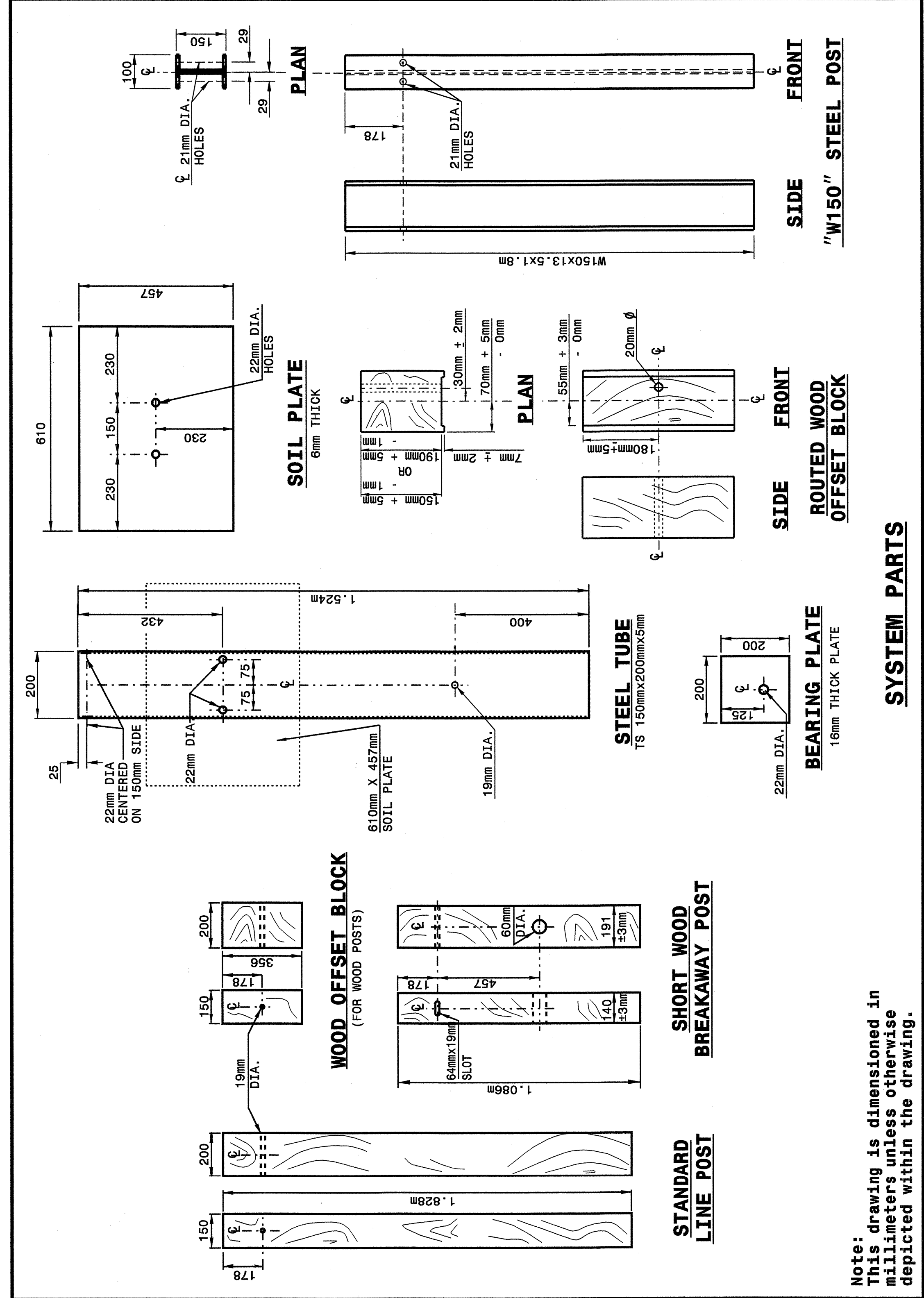
METRIC DETAIL DRAWING FOR  
GUARDRAIL INSTALLATION

SHEET 3 OF 7  
862D02

STATE OF NORTH CAROLINA  
DEPT. OF TRANSPORTATION  
DIVISION OF HIGHWAYS  
RALEIGH, N.C.

METRIC DETAIL DRAWING FOR  
GUARDRAIL INSTALLATION

SHEET 4 OF 7  
862D02



STATE OF NORTH CAROLINA  
DEPT. OF TRANSPORTATION  
DIVISION OF HIGHWAYS  
RALEIGH, N.C.

METRIC DETAIL DRAWING FOR  
GUARDRAIL INSTALLATION

SHEET 4 OF 7  
862D02

DESIGN SERVICES UNIT  
STANDARDS AND SPECIAL DESIGN  
Office 919-250-4128 FAX 919-250-4119

SEE PLATE FOR TITLE

ORIGINAL BY: 2002 STD.862.02 DATE: 02-09-03  
 MODIFIED BY: E.E. WARD DATE: 7/13/04  
 CHECKED BY: DATE: 10/21/04  
 FILE SPEC.: /usr/stds/02todetail/metric/86202/862d02m.dgn



12-JUL-2004 15:07  
 M:\Special Details\02\stds to Special Details\metric\86202\0862d02m.dgn  
 Eric Ward