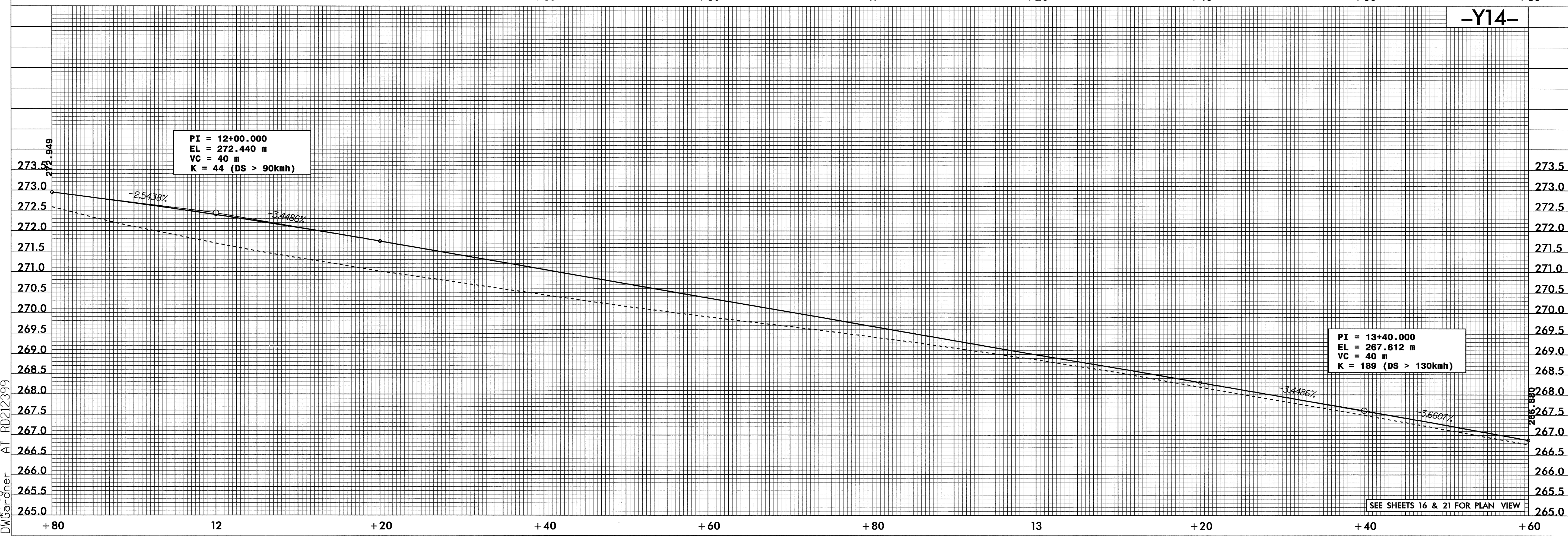
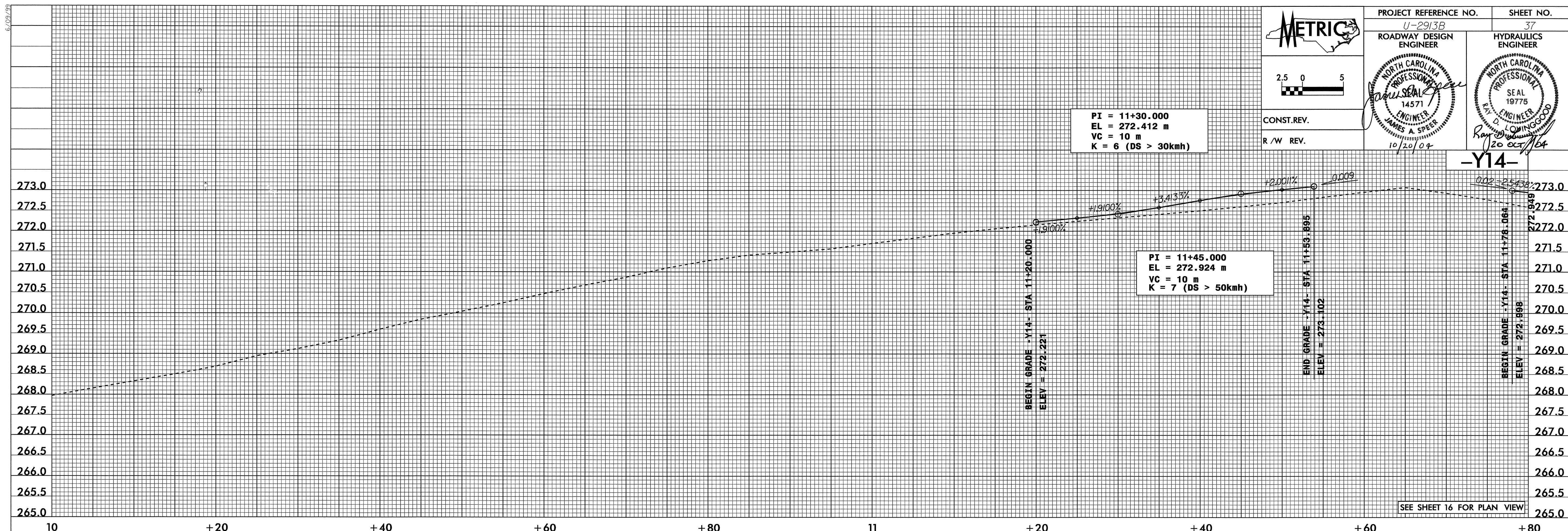


PROJECT REFERENCE NO. U-2913B	SHEET NO. 37
ROADWAY DESIGN ENGINEER	HYDRAULICS ENGINEER
<i>James A. Speer</i> NORTH CAROLINA PROFESSIONAL ENGINEER 14571 10/20/04	<i>Raymond L. Winwood</i> NORTH CAROLINA PROFESSIONAL ENGINEER 19775 10/20/04

PI = 11+30.000
EL = 272.412 m
VC = 10 m
K = 6 (DS > 30kmh)

PI = 11+45.000
EL = 272.924 m
VC = 10 m
K = 7 (DS > 50kmh)

CONST. REV.
R / W REV.



6.08/99
 06-AUG-2004 10:36
 R:\proj\2913\pfl\DWGardner At RD212399