

DATUM DESCRIPTION

The Localized Coordinates used on this project are based on the State Plane Coordinates of GPS station "U-2913-8" established by NCDOT.
 The NAD 83 State Plane Coordinates of "U-2913-8" are:
 Northing: 251880.5664 (m) Easting: 526,006.5789 (m)
 The Combined Grid Factor used on this project (ground to grid) is: 0.99992172
 The bearing and ground distance from -L- POT Station 49+40.000 to U-2913-8 is:
 N 18° 21' 27.551" E 724.214 m
 The bearing and ground distance from -L- POT Station 71+83.981 to U-2913-8 is:
 N 15° 43' 05.100" E 2960.510 m
 All distances shown are in horizontal ground meters.

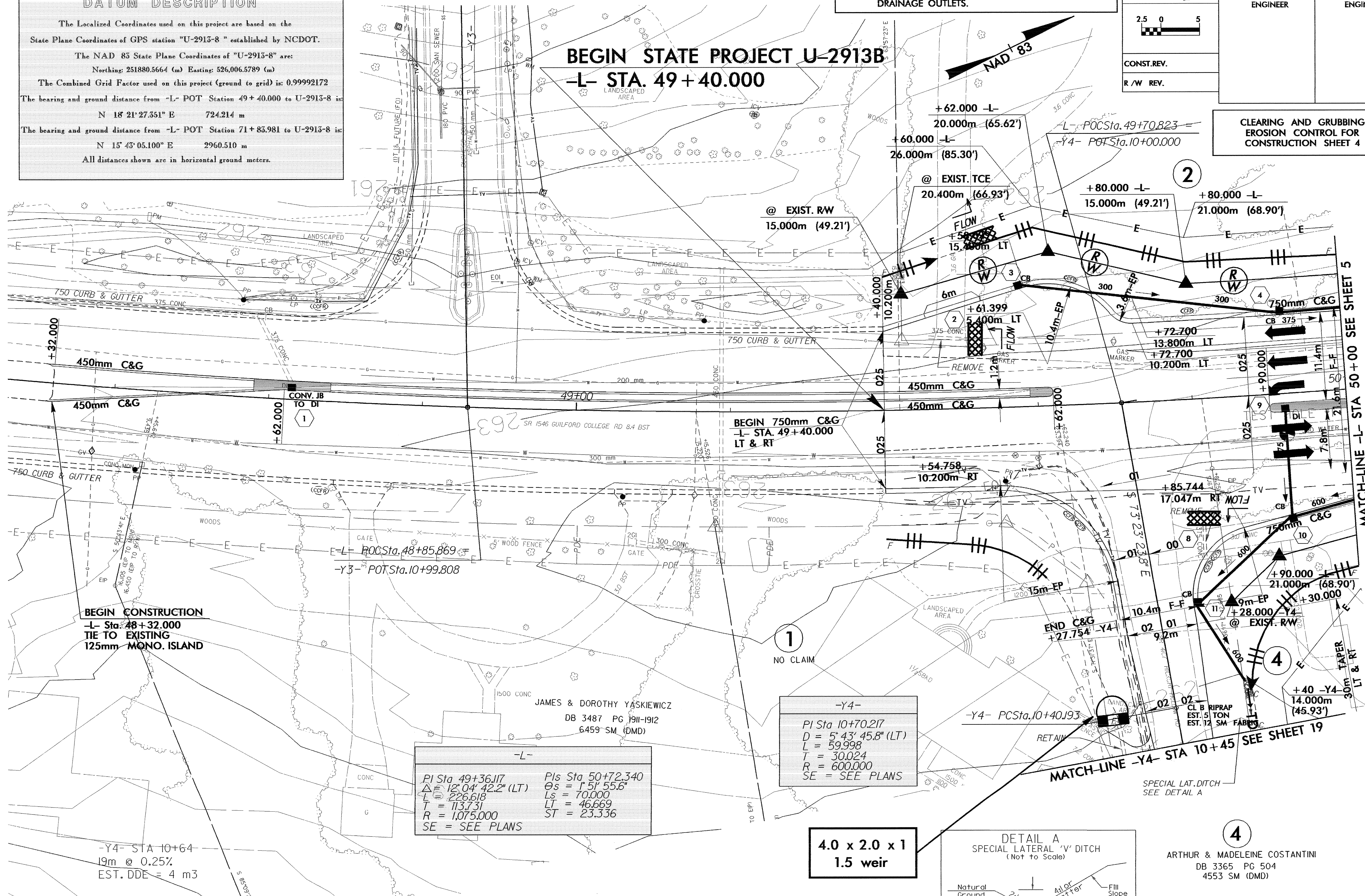
NOTE:
 PLACE TEMPORARY ROCK SEDIMENT DAMS TYPE-B AND TEMPORARY ROCK SILT CHECKS TYPE-A AT DRAINAGE OUTLETS.



CONST. REV.
 R/W REV.

PROJECT REFERENCE NO. U-2913B	SHEET NO. EC-3/CONST.4
R/W SHEET NO.	HYDRAULICS ENGINEER
ROADWAY DESIGN ENGINEER	

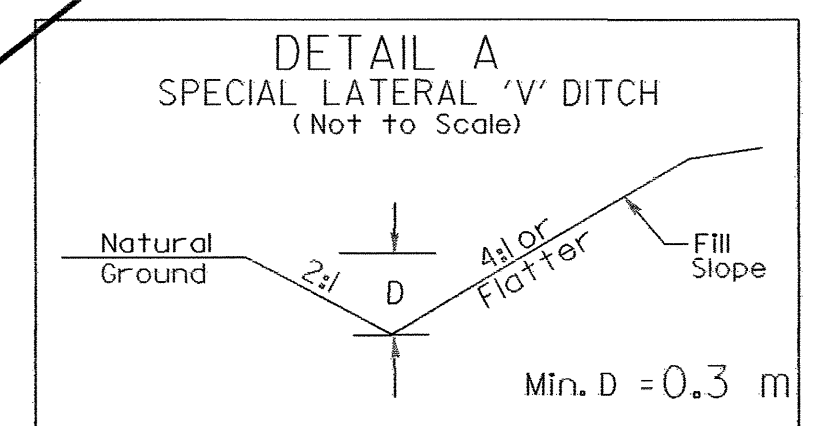
**CLEARING AND GRUBBING
 EROSION CONTROL FOR
 CONSTRUCTION SHEET 4**



-L-
 PI Sta 49+36.17 Pls Sta 50+72.340
 $\Delta = 128^\circ 04' 42.2''$ (LT) $\Theta_s = 1^\circ 51' 55.6''$
 $L = 226.618$ $L_s = 70.000$
 $T = 1137.731$ $LT = 46.669$
 $R = 1,075.000$ $ST = 23.336$
 SE = SEE PLANS

-Y4-
 PI Sta 10+70.217
 $D = 5^\circ 43' 45.8''$ (LT)
 $L = 59.998$
 $T = 30.024$
 $R = 600.000$
 SE = SEE PLANS

**4.0 x 2.0 x 1
 1.5 weir**



4
 ARTHUR & MADELEINE COSTANTINI
 DB 3365 PG 504
 4553 SM (DMD)

MONOLITHIC ISLAND
 SEE SHEET 24 FOR -L- PROFILE
 SEE SHEET 31 FOR -Y4- PROFILE

NOTE: CONSTRUCTION LIMITS WILL BE CONTAINED WITHIN R/W AND EASEMENTS PURCHASED UNDER TIP PROJECT U-2913A. THERE WILL BE NO ADDITIONAL CLAIMS ON PARCEL 1 (JAMES & JUNE STANCI) FOR TIP PROJECT U-2913B.

FROM -Y4- STA 10+39 LT TO 10+59 LT