

DATUM DESCRIPTION

The Localized Coordinates used on this project are based on the State Plane Coordinates of GPS station "U-2913-8" established by NCDOT.

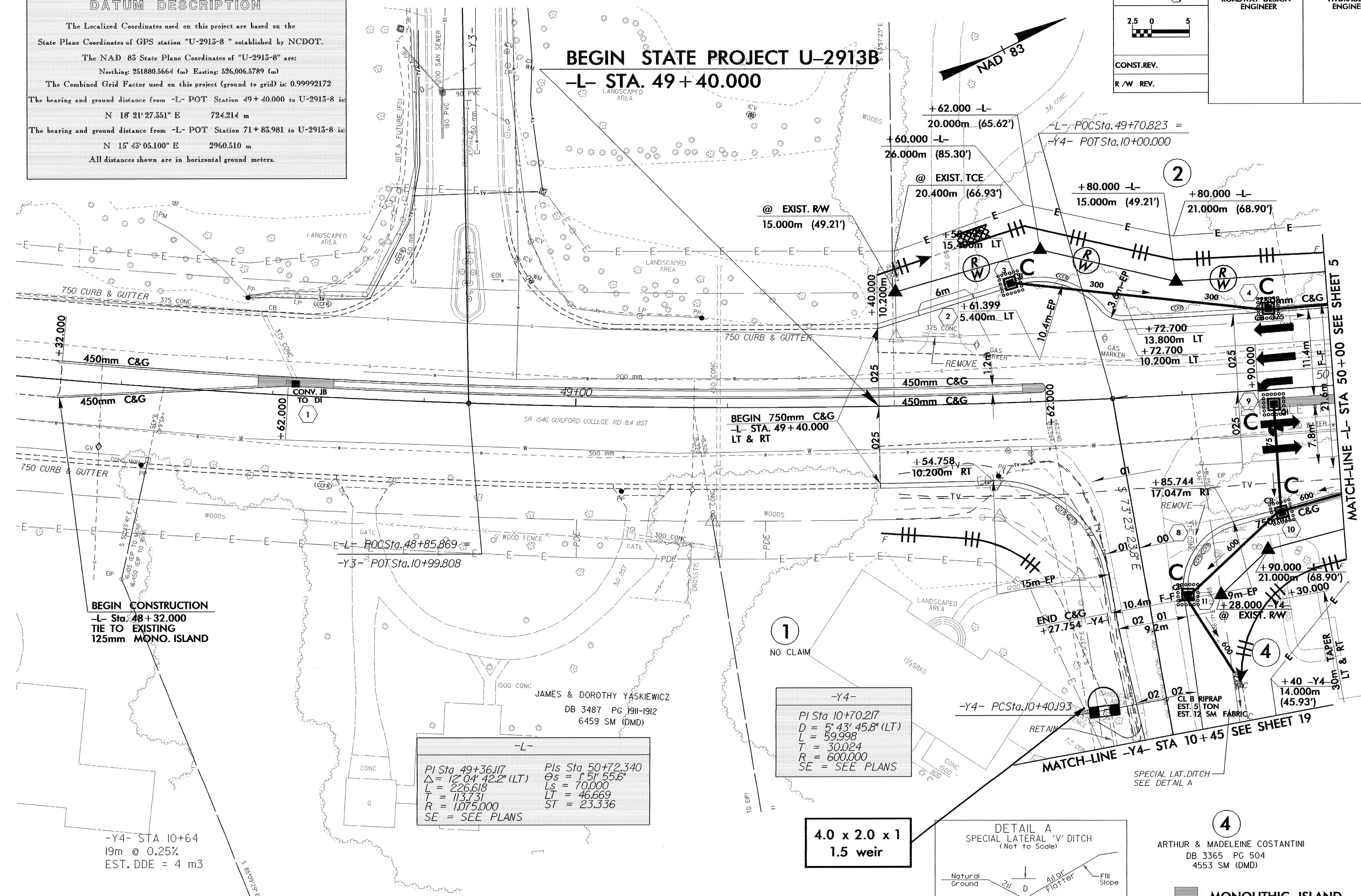
The NAD 85 State Plane Coordinates of "U-2913-8" are:
 Northing: 251880.5664 (m) Easting: 526,006.5789 (m)

The Combined Grid Factor used on this project (ground to grid) is: 0.99992172

The bearing and ground distance from -L- POT Station 49+40.000 to U-2913-8 is:
 N 18° 21' 27.351" E 724.214 m

The bearing and ground distance from -L- POT Station 71+83.981 to U-2913-8 is:
 N 15° 43' 05.100" E 2960.510 m

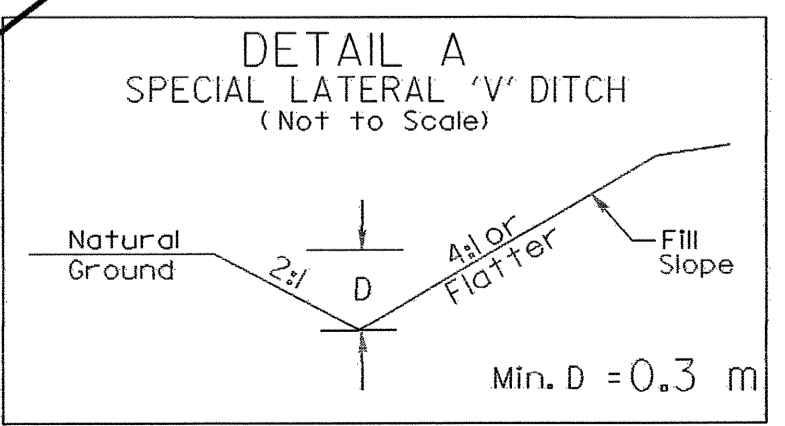
All distances shown are in horizontal ground meters.



-L-	
PI Sta. 49+36.117	PIs Sta. 50+72.340
$\Delta = 12^\circ 04' 42.2''$ (LT)	$\Theta_s = 1^\circ 51' 55.6''$
L = 226.618	Ls = 70.000
T = 113.731	LT = 46.669
R = 1,075.000	ST = 23.336
SE = SEE PLANS	

-Y4-	
PI Sta. 10+70.217	
$D = 5^\circ 43' 45.8''$ (LT)	
L = 59.998	
T = 30.024	
R = 600.000	
SE = SEE PLANS	

**4.0 x 2.0 x 1
1.5 weir**



NOTE: CONSTRUCTION LIMITS WILL BE CONTAINED WITHIN RW AND EASEMENTS PURCHASED UNDER TIP PROJECT U-2913A. THERE WILL BE NO ADDITIONAL CLAIMS ON PARCEL 1 (JAMES & JUNE STANCIL) FOR TIP PROJECT U-2913B.

FROM -Y4- STA 10+39 LT TO 10+59 LT

MONOLITHIC ISLAND
 SEE SHEET 24 FOR -L- PROFILE
 SEE SHEET 31 FOR -Y4- PROFILE

4
 ARTHUR & MADELINE COSTANTINI
 DB 3365 PG 504
 4553 SM (DMD)