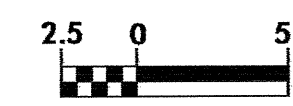
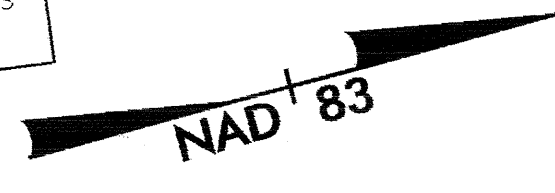




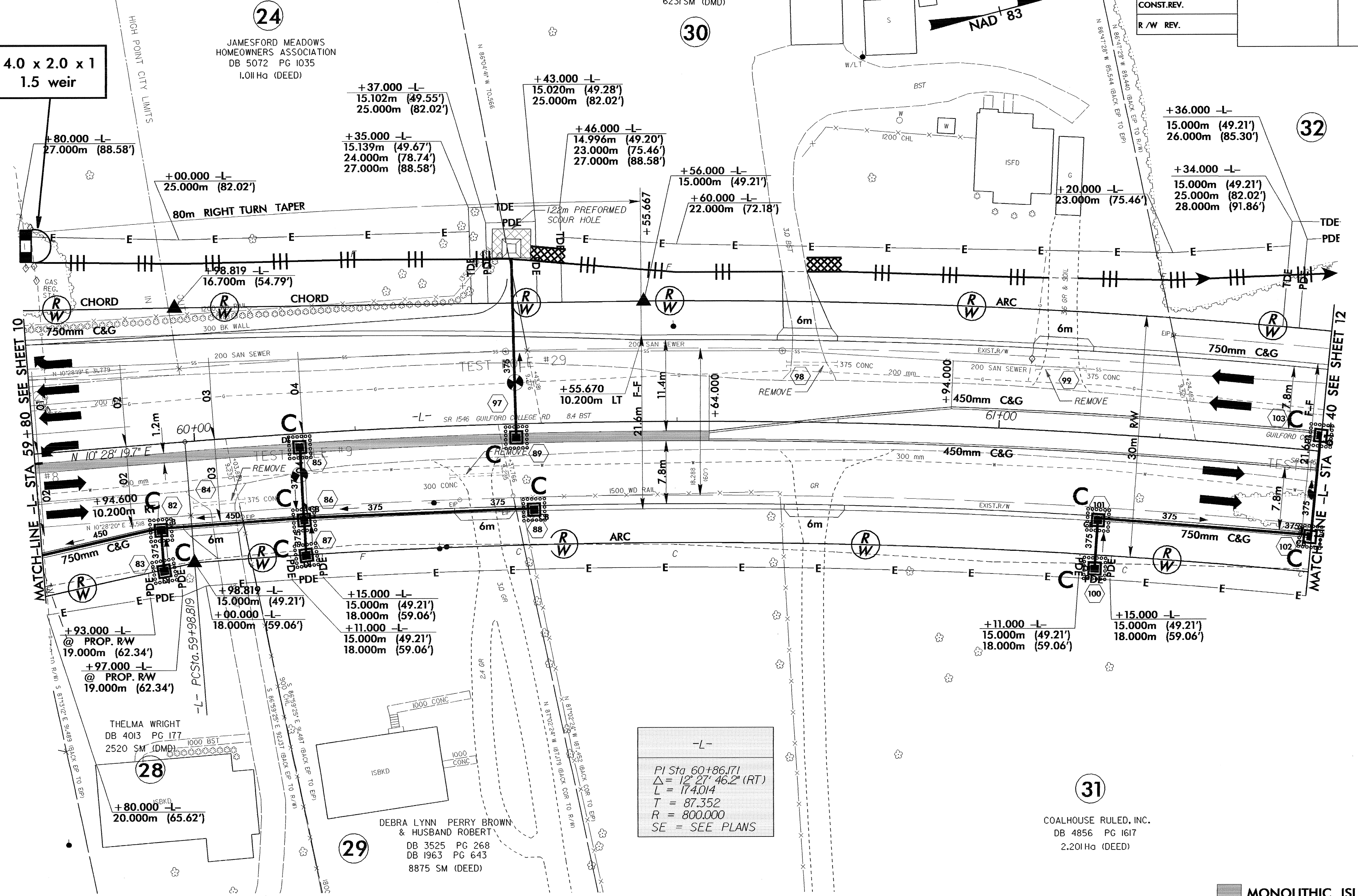
PROJECT REFERENCE NO. U-2913B	SHEET NO. EC-30/CONST.II
R/W SHEET NO.	
ROADWAY DESIGN ENGINEER	HYDRAULICS ENGINEER
CONST.REV.	
R/W REV.	



JOHN ROBERT DILLON &
WIFE RHONDA C. DILLON
DB 5933 PG 2225
6231 SM (DMD)



4.0 x 2.0 x 1
1.5 weir



-L-
PI Sta 60+86.171
Δ = 12° 27' 46.2" (RT)
L = 174.014
T = 87.352
R = 800.000
SE = SEE PLANS

MONOLITHIC ISLAND
SEE SHEET 27 FOR -L- PROFILE