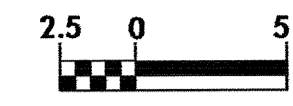
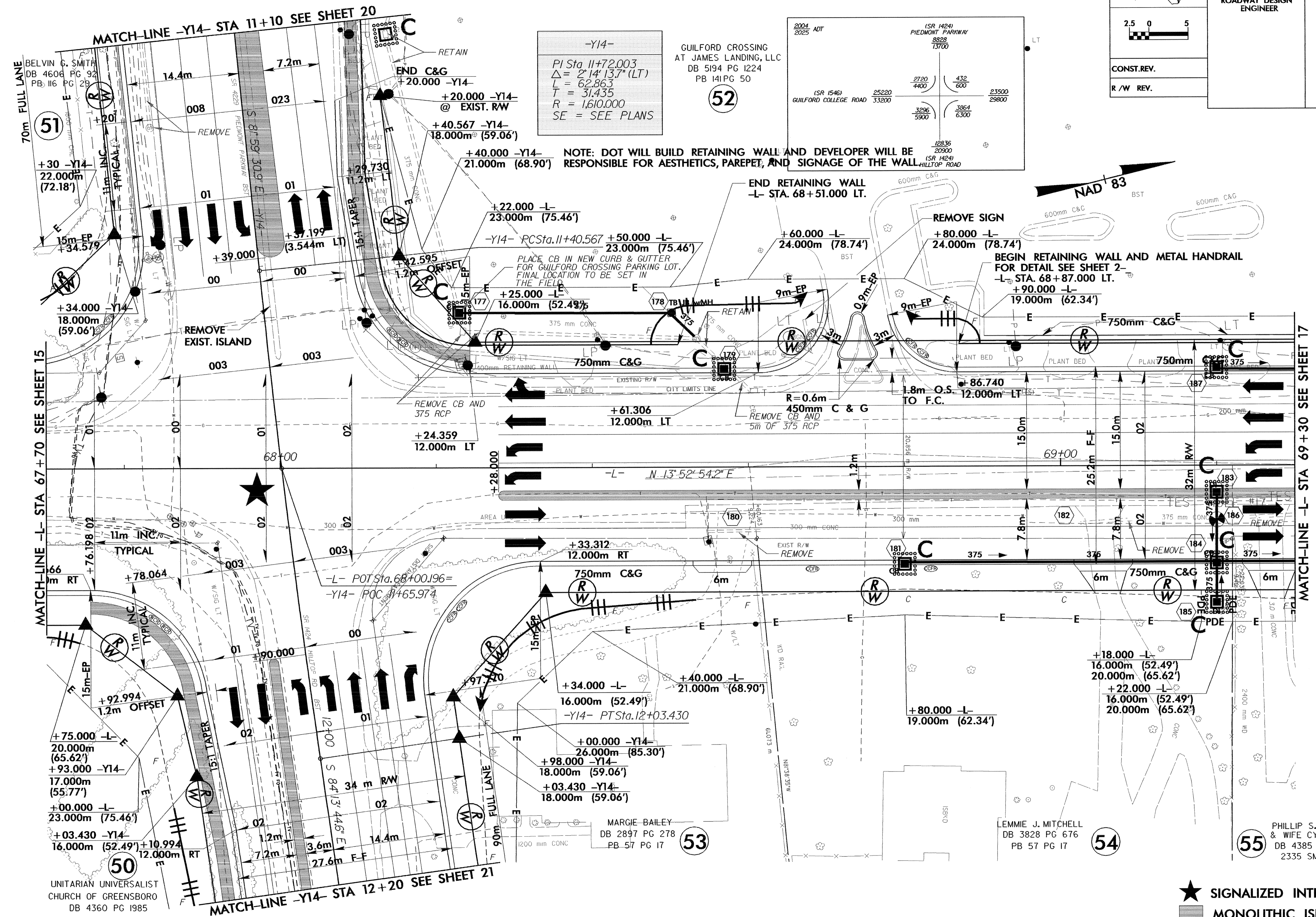




PROJECT REFERENCE NO.	SHEET NO.
U-2913B	EC-35/CONST.16
R/W SHEET NO.	
ROADWAY DESIGN ENGINEER	HYDRAULICS ENGINEER

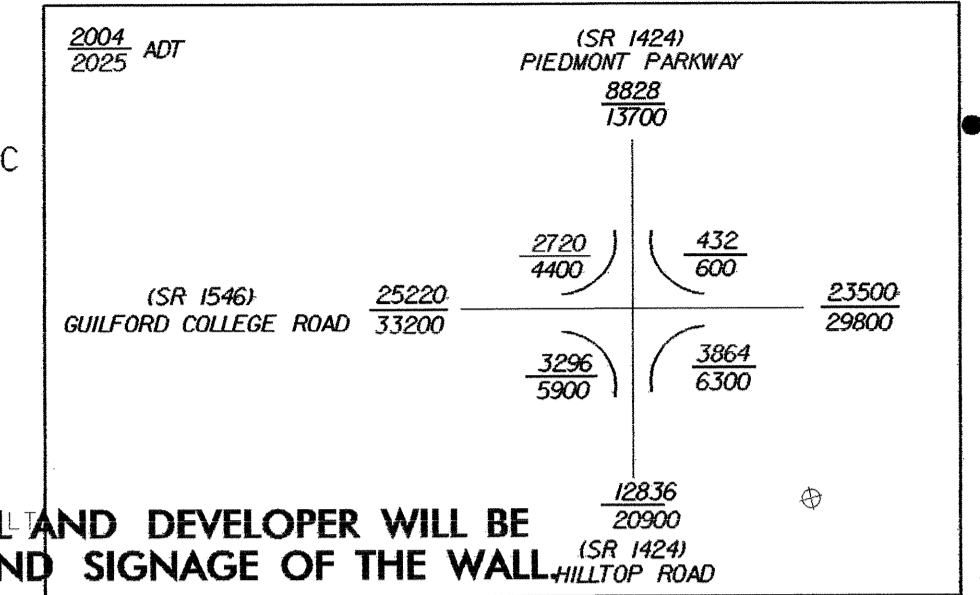


CONST.REV.  
R/W REV.

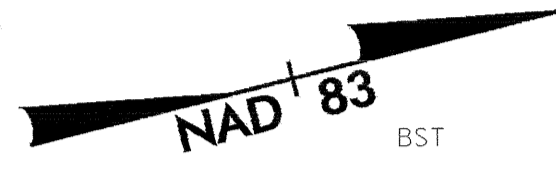


**-Y14-**  
 PI Sta. 11+72.003  
 $\Delta = 2^{\circ}14'13.7''$  (LT)  
 $L = 62.863$   
 $T = 31.435$   
 $R = 1,610.000$   
 SE - SEE PLANS

GUILFORD CROSSING  
 AT JAMES LANDING, LLC  
 DB 5194 PG 1224  
 PB 141PG 50



NOTE: DOT WILL BUILD RETAINING WALL AND DEVELOPER WILL BE RESPONSIBLE FOR AESTHETICS, PAREPET, AND SIGNAGE OF THE WALL.



NOTE: BEGIN 1.5m CONC. SIDEWALK -Y14- STA. 11+79.833 RT.

NOTE: FACE OF RETAINING WALL @ BACK OF BERM

NOTE: SIGNAL IS PART OF HIGH POINT SIGNAL SYSTEM

SEE SHEET 30 FOR -L- PROFILE  
 SEE SHEET 37 FOR -Y14- PROFILE  
 SEE SHEET 40 FOR WALL PROFILES

★ SIGNALIZED INTERSECTION  
 ■ MONOLITHIC ISLAND

UNITARIAN UNIVERSALIST  
 CHURCH OF GREENSBORO  
 DB 4360 PG 1985

MARGIE BAILEY  
 DB 2897 PG 278  
 PB 57 PG 17

LEMMIE J. MITCHELL  
 DB 3828 PG 676  
 PB 57 PG 17

PHILLIP S. STRAUSS  
 & WIFE CYNTHIA A.  
 DB 4385 PG 1395  
 2335 SM (DMD)