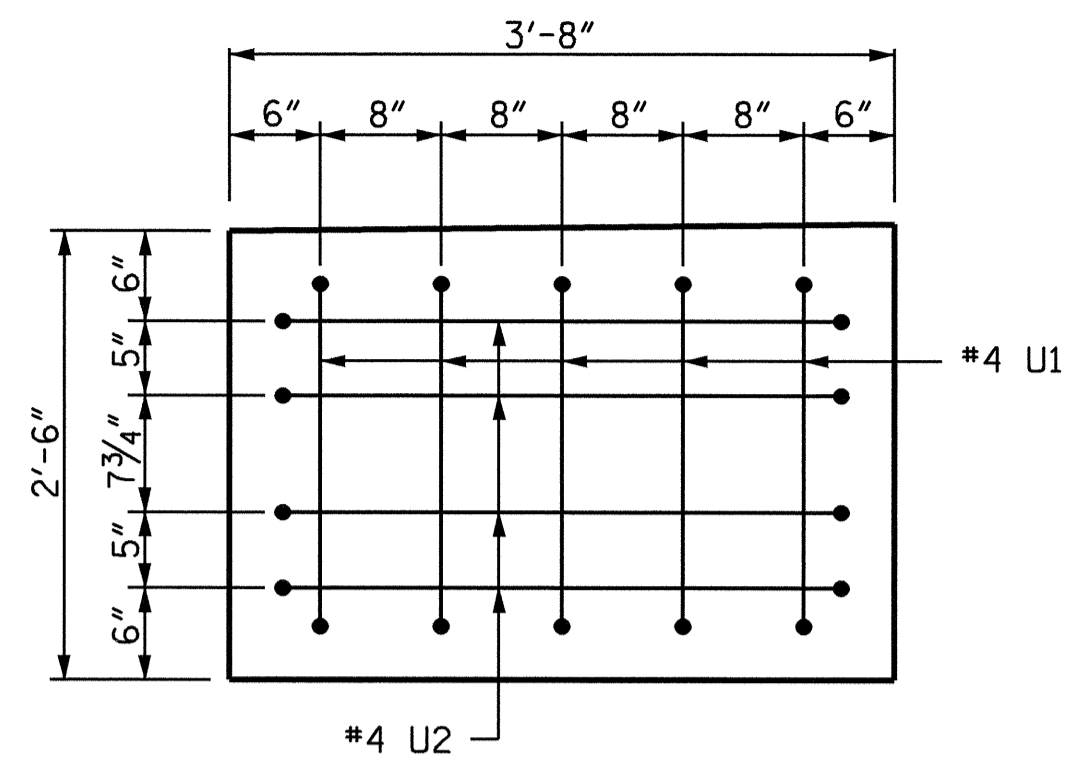
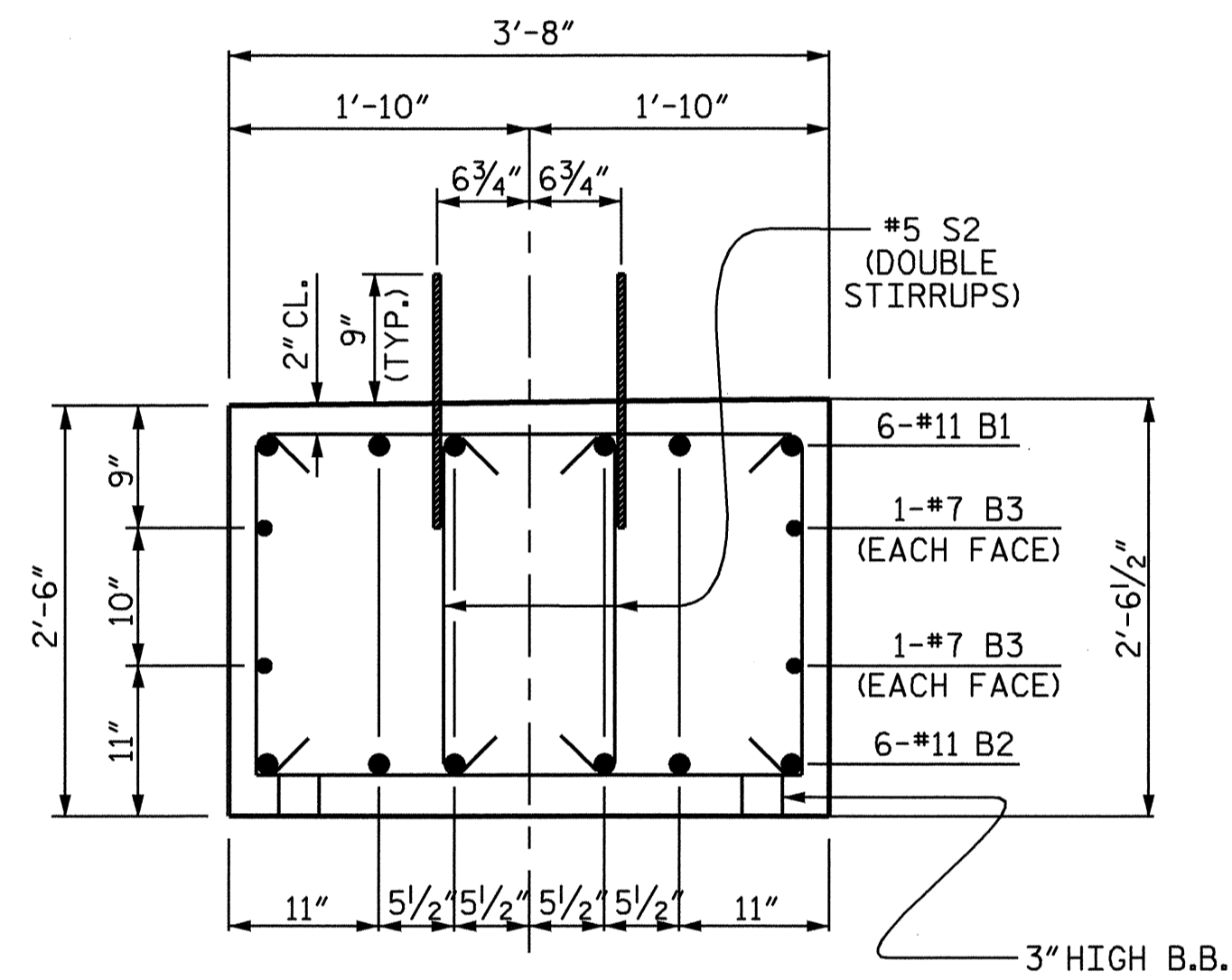


SECTION A-A

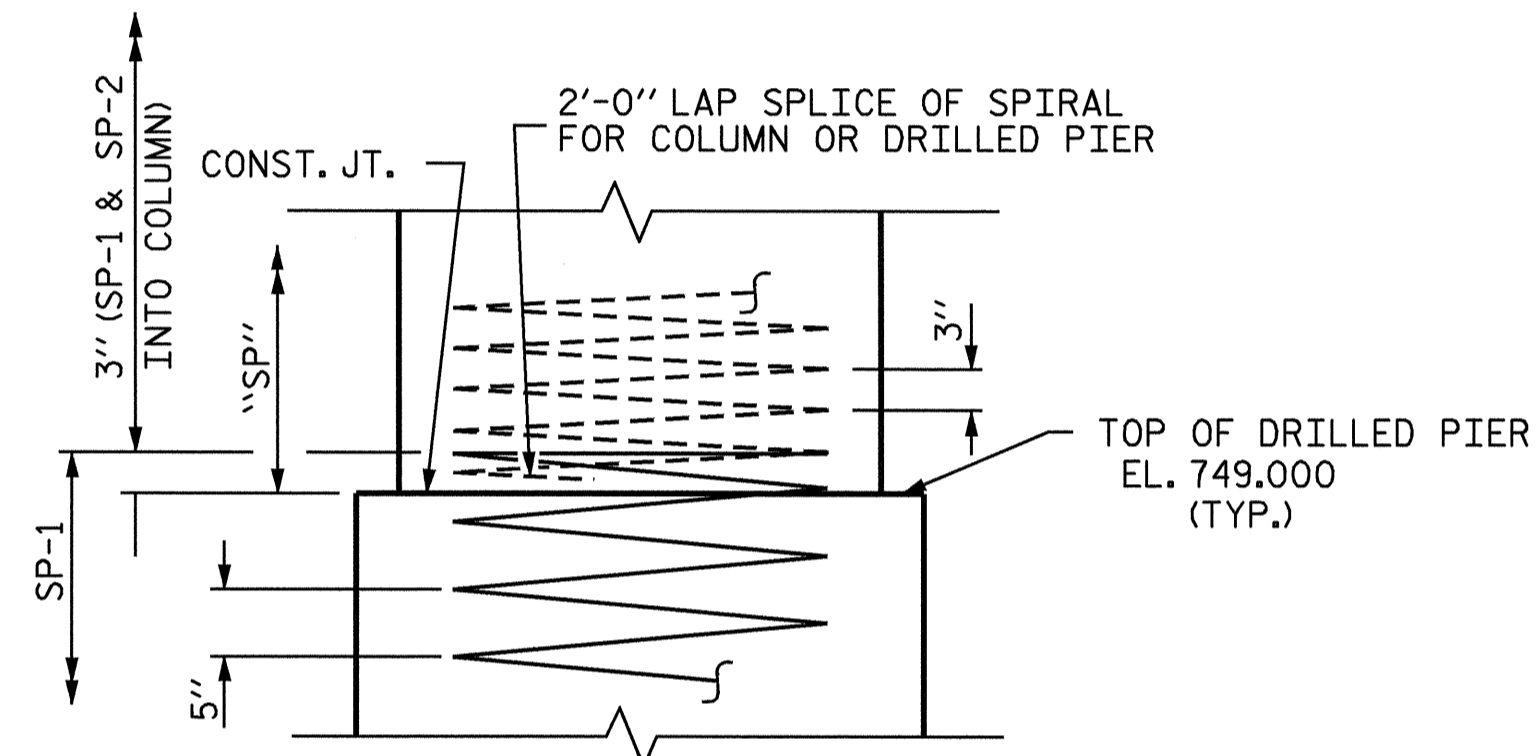


SECTION X-X

(REINFORCING STEEL SAME BOTH ENDS)



SECTION B-B



CONSTRUCTION JOINT DETAIL

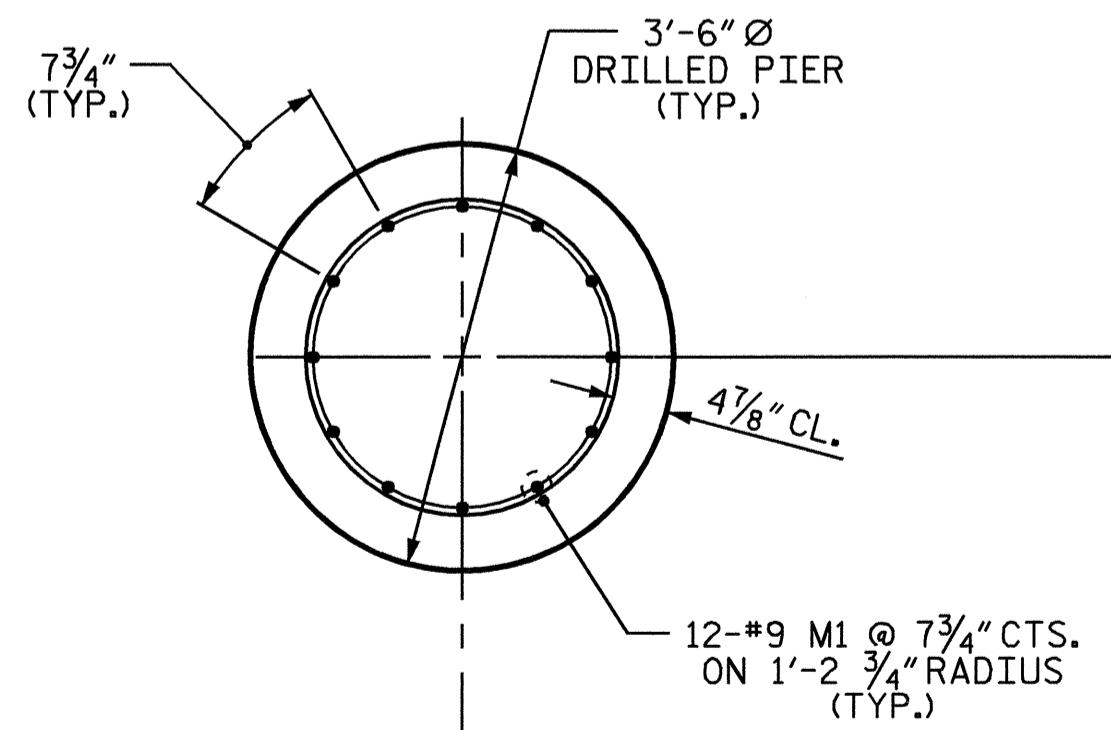
BAR TYPES

ALL BAR DIMENSIONS ARE OUT TO OUT.

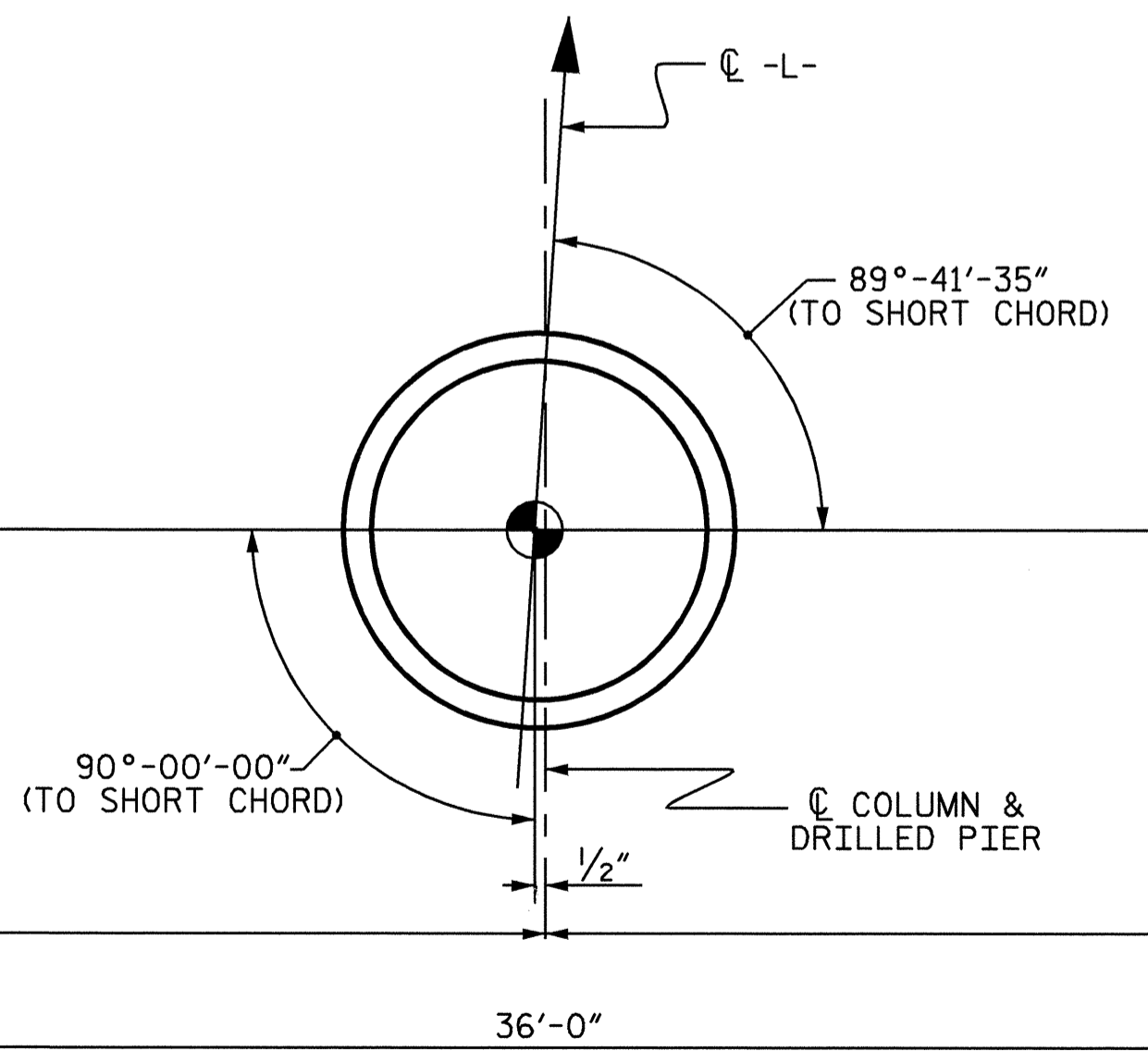
BILL OF MATERIAL					
BENT NO. 2					
BAR	NO.	SIZE	TYPE	LENGTH	WEIGHT
B1	6	#11	1	50'-1"	1597
B2	6	#11	STR	47'-1"	1501
B3	4	#7	STR	47'-1"	385
B4	4	#4	STR	3'-4"	9
M1	12	#10	STR	37'-10"	1954
M2	24	#10	STR	43'-10"	4527
S1	44	#5	2	8'-6"	390
S2	16	#5	2	7'-5"	124
S3	8	#4	2	4'-4"	23
U1	10	#4	3	5'-0"	33
U2	8	#4	3	6'-2"	33
V1	12	#10	4	14'-4"	740
V2	12	#10	4	13'-11"	719
V3	12	#10	4	13'-7"	701
TOTAL REINFORCING STEEL					12736 (LBS)
SPIRAL REINFORCING STEEL (LBS)					
SP-1	1	*	5	590'-9"	616
SP-2	2	*	5	713'-1"	1487
SP-3	1	**	6	387'-1"	259
SP-4	1	**	6	376'-8"	252
SP-5	1	**	6	364'-1"	243
TOTAL =					2857 (LBS.)
CLASS A CONCRETE (C.Y.)					
POUR #2 (COLUMNS) = 8.3 C.Y.					
POUR #3 (CAP) = 16.2 C.Y.					
POUR #4 (LAT. GUIDE) = 0.1 C.Y.					
TOTAL = 24.6 C.Y.					
DRILLED PIERS					
DRILLED PIER CONCRETE (C.Y.)					
POUR #1 (DRILLED PIERS) = 35.3 C.Y.					
3'-6" Ø DRILLED PIERS IN SOIL (LIN. FT.) = 75.0					
3'-6" Ø DRILLED PIERS NOT IN SOIL (LIN. FT.) = 24.0					
SPT TESTING = 1 EA.					
CROSSHOLE SONIC LOGGING = 1 EA.					
CSL TUBES (LIN. FT.) = 426					
PERMANENT STEEL CASING FOR 3'-6" Ø DRILLED PIERS (LIN. FT.) = 27.0					

* THE SP-1 SPIRAL REINFORCING STEEL SHALL BE W31 OR D-31 COLD DRAWN WIRE OR #5 PLAIN OR DEFORMED BAR.

** THE SP-2 SPIRAL REINFORCING STEEL SHALL BE W20 OR D-20 COLD DRAWN WIRE OR #4 PLAIN OR DEFORMED BAR.

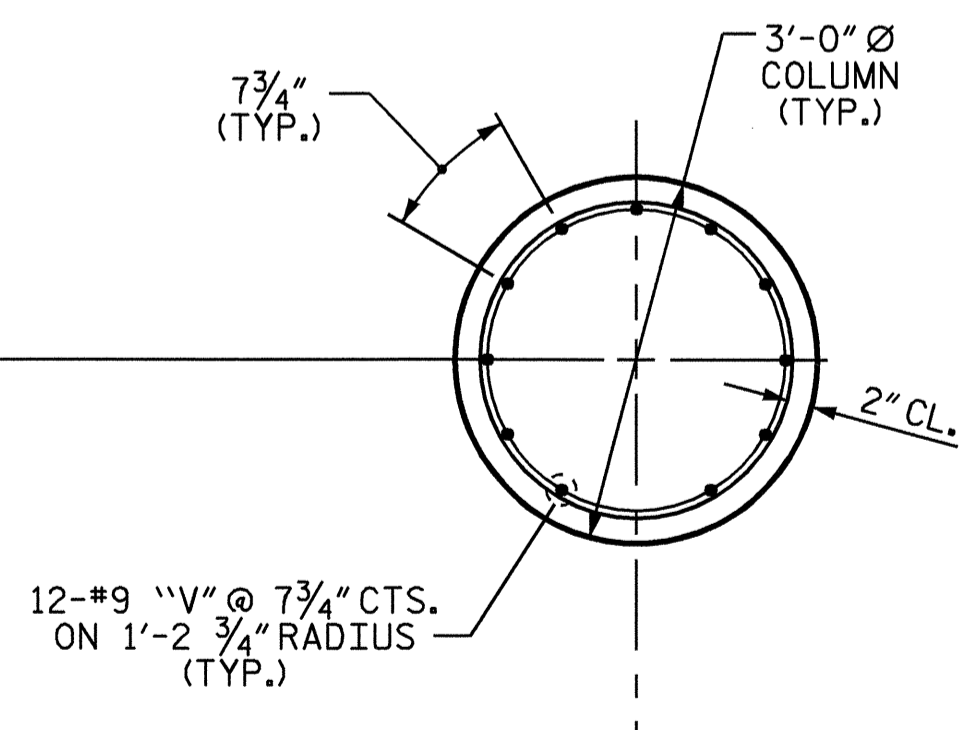


PLAN OF DRILLED PIERS



PLAN OF COLUMNS & DRILLED PIERS

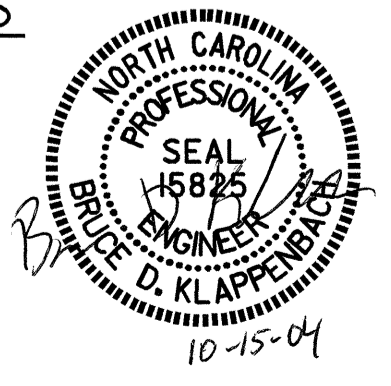
(REINFORCING STEEL AND DIMENSIONS ARE TYPICAL FOR ALL COLUMNS AND DRILLED PIERS)



PLAN OF COLUMNS

PROJECT NO. B-3454
 FORSYTH COUNTY
 STATION: 20+93.00 -L-

SHEET 2 OF 2
 STATE OF NORTH CAROLINA
 DEPARTMENT OF TRANSPORTATION
 RALEIGH
 SUBSTRUCTURE
 BENT #2



REVISIONS						SHEET NO.
NO.	BY:	DATE:	NO.	BY:	DATE:	
1			3			5-19
2			4			TOTAL SHEETS 27

DRAWN BY: J.B. WILSON DATE: 9/29/04
 CHECKED BY: G.M. PATTERSON DATE: 9/04