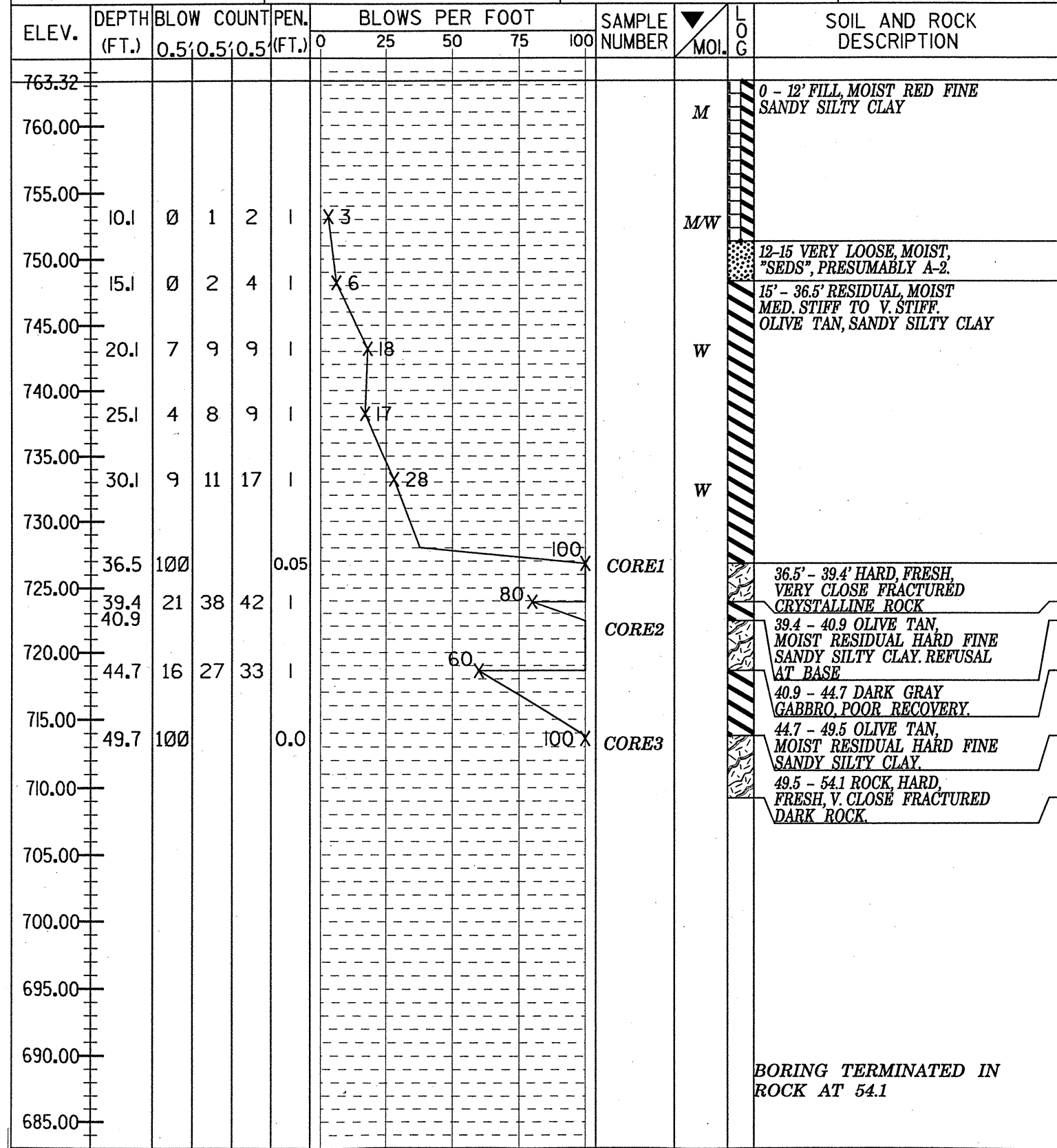


NORTH CAROLINA DEPARTMENT OF TRANSPORTATION
 GEOTECHNICAL UNIT BORING LOG SHEET 1 OF 1

SHEET OF
 NORTH CAROLINA DEPARTMENT OF TRANSPORTATION
 DIVISION OF HIGHWAYS
 GEOTECHNICAL UNIT CORE BORING REPORT

PROJECT NO. 8.2625201	ID. B-3454	COUNTY FORSYTH	GEOLOGIST MURRAY
SITE DESCRIPTION BRIDGE 260 OVER MUDDY CREEK ON SR-1136			GROUND WATER
BORING NO. B1-A	BORING LOCATION 20+65.00	OFFSET -13.00	ALIGNMENT
COLLAR ELEVATION 763.32	NORTHING 877752.7392	EASTING 1601025.8494	0 HR. 24 HR.
TOTAL DEPTH 54.1	DRILL MACHINE CME-550	DRILL METHOD NW CAS/NXWL	HAMMER TYPE AUTOMATIC
START DATE 2/5/03	COMPLETION DATE 2/5/03	SURFACE WATER DEPTH	DEPTH TO ROCK 49.5

PROJECT NO: 8.2625201 PROJECT ID: B-3454 COUNTY: Forsyth GEOLOGIST: C.C. MURRAY
 SITE DESCRIPTION: Bridge 60 over Muddy Creek on SR 1525 DRILLER: J.E. ESTEP
 BORING NO: B1-A BORING LOCATION (STA): 20+65 OFFSET: -13.00
 COLLAR ELEV: 763.32 PERSONNEL: DKB, JEE, CCM CORE SIZE: NXWL
 TOTAL DEPTH: 43.6 DRILL MACHINE: CME-550 DATE STARTED: 2/5/03
 TOTAL RUN: 11.3 DRILL EQUIP: DATE COMPLETED: 2/5/03



ELEV. (FT)	DEPTH (FT)	DRILL RATE (MIN/1.0 FT)	RUN NO.	REC % (FT)	RQD % (FT)	SAMPLE NO.	FIELD CLASSIFICATION AND REMARKS
726.82	36.5		1	100%	65%		36.5' to 39.4', Hard, fresh to slightly weathered medium grained gabbro with mod. close spaced fractures. Very sharp transition at top and bottom to saprolitic clay.
723.92	39.4			0	0		SPT drive, see borelog
722.42	40.9'		2	4.5	0		40.9' -44.7' Single 3" piece of Hard, slightly weathered Medium grained gabbro, as above. Sharp contact below to saprolitic clay.
718.62	44.7'			0	0		SPT drive, see borelog
713.82	49.5'		3	61%	10.4%		49.5' - 54.1' Dark gray hard, fresh to slightly weathered medium grained gabbro with very close spaced fractures. Upper contact is sharp.
709.22	54.1						Boring Terminated at 54.1'
NOTES							

BORING TERMINATED IN ROCK AT 54.1