

6/10/99

04/20/2004 08:47:03 AM R:\01223600A\Plan\2813CUC4.PSU

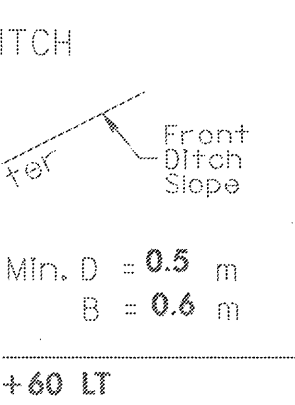
**DATUM DESCRIPTION**

THE LOCALIZED COORDINATE SYSTEM DEVELOPED FOR THIS PROJECT IS BASED ON THE STATE PLANE COORDINATES ESTABLISHED BY NCDOT FOR MONUMENT "R2813C-10" WITH NAD 83 STATE PLANE GRID COORDINATES OF NORTHING: 197,916.503 (m) EASTING: 286,973.960 (m)

THE AVERAGE COMBINED GRID FACTOR USED ON THIS PROJECT (GROUND TO GRID) IS 0.999784950

THE N.C. LAMBERT GRID BEARING LOCALIZED HORIZONTAL GROUND DISTANCE FROM "R2813C-10" TO -L- STATION 35+00.000 IS : S 20° 03' 58.43" E AND 13.634 m

ALL LINEAR DIMENSIONS ARE LOCALIZED HORIZONTAL DISTANCES VERTICAL DATUM USED IS NOVD 29



-L-  
 PI Sta 36+92.290  
 $\Delta = 39^{\circ} 00' 00.9" (RT)$   
 $L = 313.114$   
 $T = 162.896$   
 $R = 460.000$

-RP A-  
 PIs Sta 10+51.544  
 $\theta_s = 5^{\circ} 32' 55.9"$   
 $L_s = 45.720$   
 $LT = 30.495$   
 $ST = 15.254$

-LA-  
 PI Sta 36+96.294  
 $\Delta = 39^{\circ} 00' 00.8" (RT)$   
 $L = 308.175$   
 $T = 160.526$   
 $R = 452.743$   
 $e = 0.06 \text{ m/m}$   
 $RO =$

FOR PROFILE OF -L- SEE SHEET NO. 14

PROJECT REFERENCE NO. **R-2813C** SHEET NO. **UC-4**

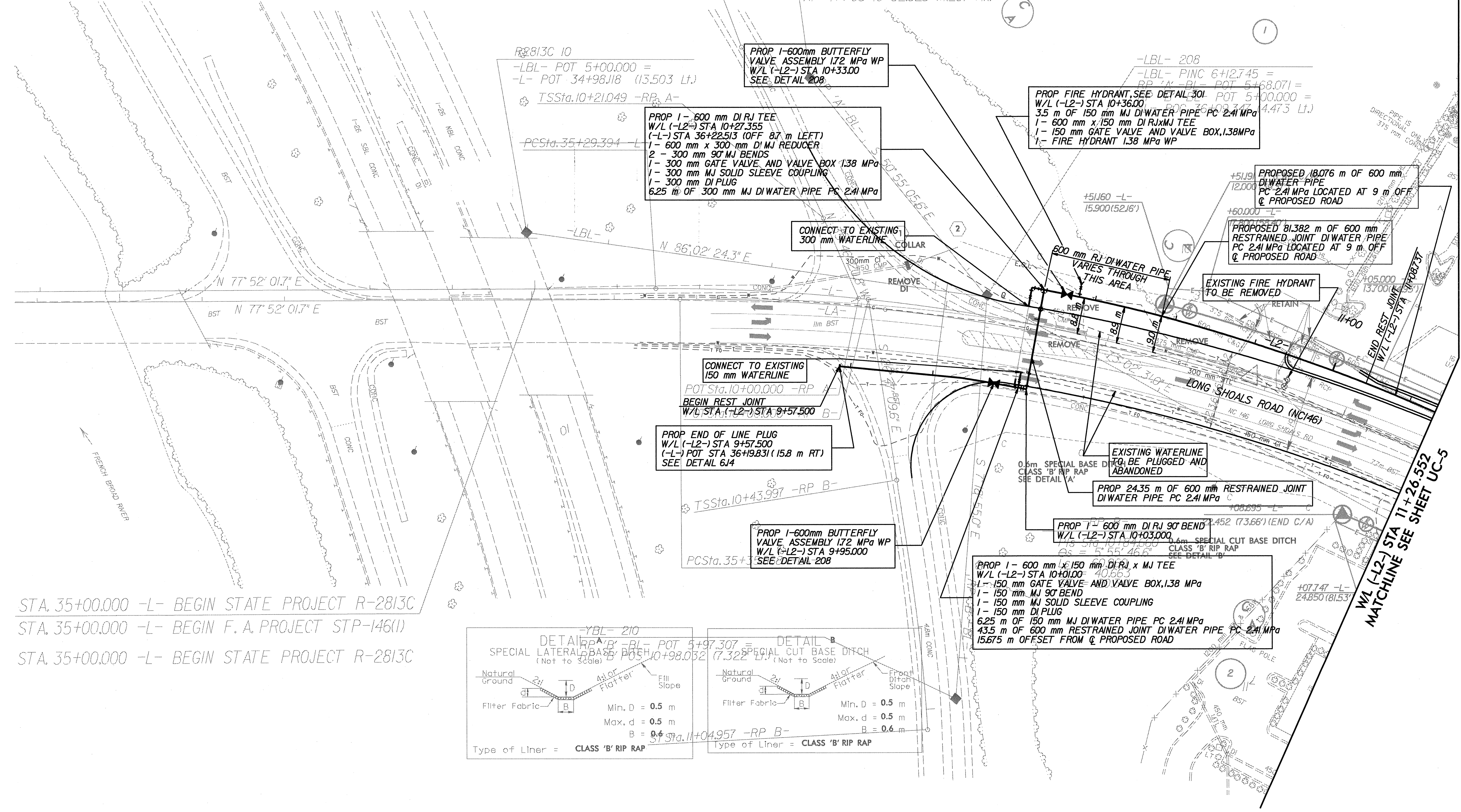
R /W SHEET NO.

CONST. REV.

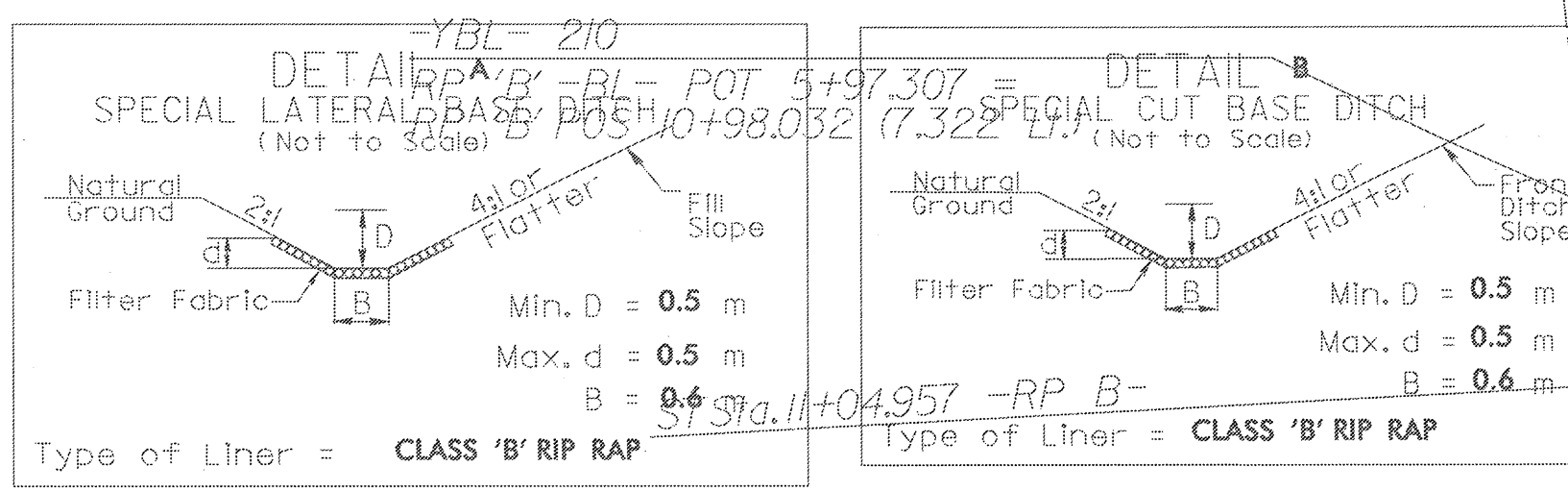
R /W REV.

Kimley-Horn and Associates, Inc. © 2003

**UTILITY CONSTRUCTION**



STA. 35+00.000 -L- BEGIN STATE PROJECT R-2813C  
 STA. 35+00.000 -L- BEGIN F. A. PROJECT STP-146(I)  
 STA. 35+00.000 -L- BEGIN STATE PROJECT R-2813C



SEE SHEET UC-14 FOR (-L2-) PROFILE