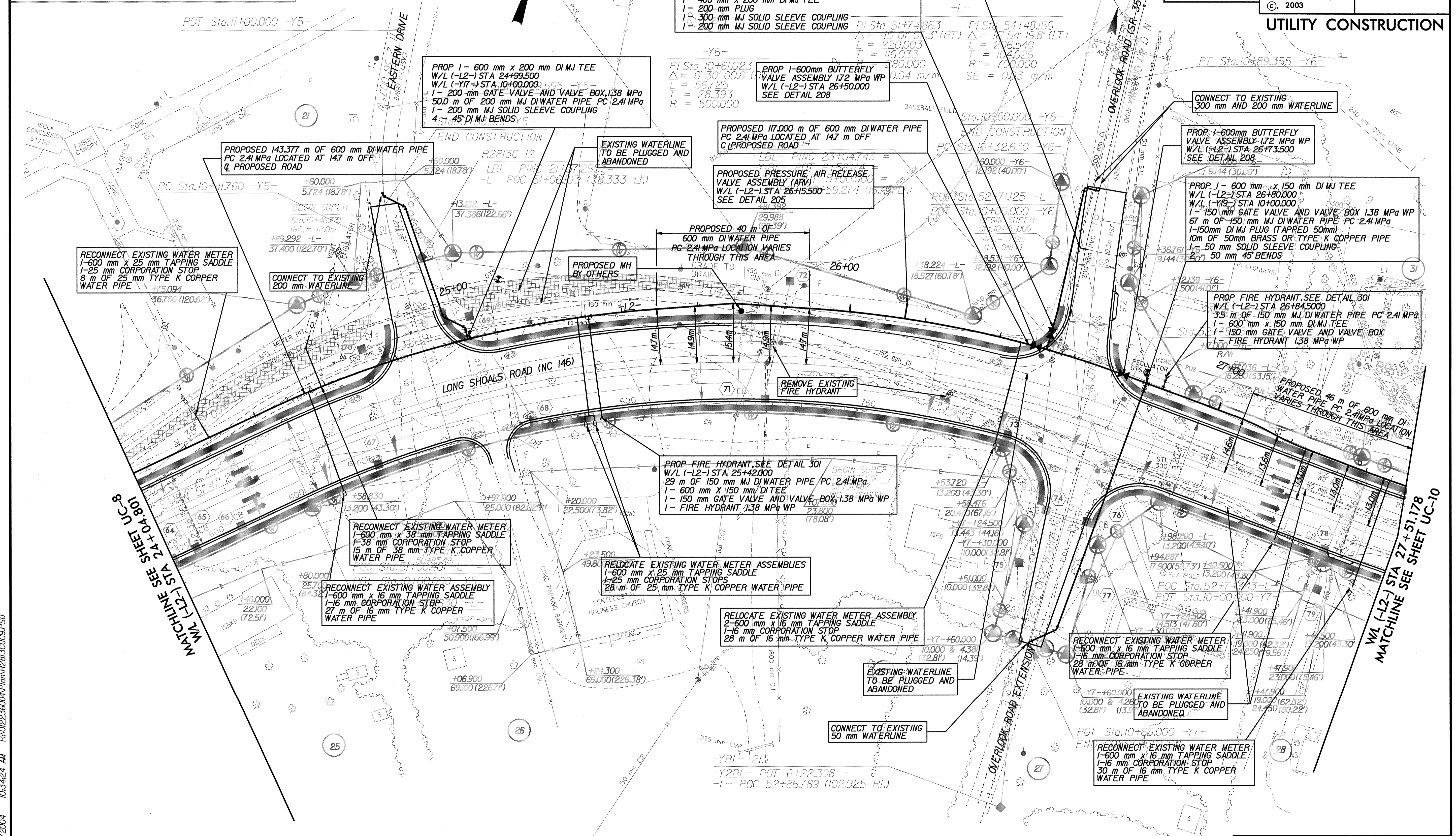


REVISIONS	
R/W REV	CHANGED PARCEL NAMES FOR PARCELS 27, 27A AND 31, REDUCED EASEMENT ON PARCEL 30

PROJECT REFERENCE NO. R-2813C	SHEET NO. UC-9
R/W SHEET NO.	

CONST. REV.
R/W REV.

Kimley-Horn and Associates, Inc.
©, 2003



FOR PROFILE OF -L- SEE SHEETS NO. 18 & 19
 FOR PROFILES OF -Y5- -Y6- & -Y7- SEE SHEET NO. 24
 FOR INTERSECTION DETAIL OF -Y5- SEE SHEET NO. 26
 FOR INTERSECTION DETAILS OF -Y6- & -Y7- SEE SHEET NO. 26

PROP 1- 600 mm x 200 mm DI MJ TEE
 W/L (-L2-) STA 24+99.500
 W/L (-Y7-) STA 10+00.000
 1- 200 mm GATE VALVE AND VALVE BOX, 138 MPa
 50.0 m OF 200 mm MJ DI WATER PIPE PC 2.41 MPa
 1- 200 mm MJ SOLID SLEEVE COUPLING
 4 45° DI MJ BENDS

PROP 1- 600 mm BUTTERFLY VALVE ASSEMBLY 172 MPa WP
 W/L (-L2-) STA 26+50.000
 SEE DETAIL 208

RECONNECT EXISTING WATER METER
 1- 400 mm x 25 mm TAPPING SADDLE
 1- 25 mm CORPORATION STOP
 5 m OF 25 mm TYPE K COPPER WATER PIPE

RECONNECT EXISTING WATER METER
 1- 600 mm x 25 mm TAPPING SADDLE
 1- 25 mm CORPORATION STOP
 8 m OF 25 mm TYPE K COPPER WATER PIPE

CONNECT TO EXISTING 200 mm WATERLINE

PROPOSED 177.000 m OF 600 mm DI WATER PIPE PC 2.41 MPa LOCATED AT 147 m OFF C. PROPOSED ROAD

PROPOSED 40 m OF 600 mm DI WATER PIPE PC 2.41 MPa LOCATION VARIES THROUGH THIS AREA

CONNECT TO EXISTING 300 mm AND 200 mm WATERLINE

PROP 1- 600 mm BUTTERFLY VALVE ASSEMBLY 172 MPa WP
 W/L (-L2-) STA 26+73.500
 SEE DETAIL 208

PROP 1- 600 mm x 150 mm DI MJ TEE
 W/L (-L2-) STA 26+80.000
 W/L (-Y9-) STA 10+00.000
 1- 150 mm GATE VALVE AND VALVE BOX 138 MPa WP
 67 m OF 150 mm MJ DI WATER PIPE PC 2.41 MPa
 1- 150 mm DI MJ PLUG (TAPPED 50mm)
 10m OF 50mm BRASS OR TYPE K COPPER PIPE
 1- 50 mm SOLID SLEEVE COUPLING
 2 45° 50 mm 45° BENDS

PROP FIRE HYDRANT, SEE DETAIL 301
 W/L (-L2-) STA 26+84.5000
 3.5' m OF 150 mm MJ DI WATER PIPE PC 2.41 MPa
 1- 600 mm x 150 mm DI MJ TEE
 1- 150 mm GATE VALVE AND VALVE BOX
 1- FIRE HYDRANT 138 MPa WP

PROP FIRE HYDRANT, SEE DETAIL 301
 W/L (-L2-) STA 25+42.000
 29 m OF 150 mm MJ DI WATER PIPE PC 2.41 MPa
 1- 600 mm x 150 mm DI TEE
 1- 150 mm GATE VALVE AND VALVE BOX 138 MPa WP
 1- FIRE HYDRANT 138 MPa WP

RECONNECT EXISTING WATER METER
 1- 600 mm x 38 mm TAPPING SADDLE
 1- 38 mm CORPORATION STOP
 15 m OF 38 mm TYPE K COPPER WATER PIPE

RECONNECT EXISTING WATER ASSEMBLY
 1- 600 mm x 16 mm TAPPING SADDLE
 1- 16 mm CORPORATION STOP
 27 m OF 16 mm TYPE K COPPER WATER PIPE

RELOCATE EXISTING WATER METER ASSEMBLY
 1- 600 mm x 25 mm TAPPING SADDLE
 1- 25 mm CORPORATION STOP
 28 m OF 25 mm TYPE K COPPER WATER PIPE

RELOCATE EXISTING WATER METER ASSEMBLY
 2- 600 mm x 16 mm TAPPING SADDLE
 1- 16 mm CORPORATION STOP
 28 m OF 16 mm TYPE K COPPER WATER PIPE

RECONNECT EXISTING WATER METER
 1- 600 mm x 16 mm TAPPING SADDLE
 1- 16 mm CORPORATION STOP
 28 m OF 16 mm TYPE K COPPER WATER PIPE

EXISTING WATERLINE TO BE PLUGGED AND ABANDONED

RECONNECT EXISTING WATER METER
 1- 600 mm x 16 mm TAPPING SADDLE
 1- 16 mm CORPORATION STOP
 30 m OF 16 mm TYPE K COPPER WATER PIPE

SEE SHEET UC-16 FOR (-L2-) PROFILE

04/20/2004 10:34:24 AM R:\01223600\A\Plan\2813C\UC9.PSU