

METRIC

CONST. REV. _____
R/W REV. _____

PROJECT REFERENCE NO. <i>R-2813C</i>	SHEET NO. <i>UC-25</i>
R/W SHEET NO. <i>9</i>	
ROADWAY DESIGN ENGINEER	HYDRAULICS ENGINEER

NOTES:

1. CONTRACTOR SHALL COMPLY WITH ALL APPLICABLE NCDOT STANDARDS & PROJECT SPECIAL PROVISIONS FOR NEW SEWER LINE CONSTRUCTION.
2. THE LOCATION AND DEPTH OF ALL UNDERGROUND UTILITIES ARE APPROXIMATE, CONTRACTOR SHALL VERIFY ALL UNDERGROUND UTILITIES WITH NC ONE CALL PRIOR TO CONSTRUCTION.
3. PROPOSED WATER, TELEPHONE, GAS AND ELECTRIC LINES SHALL BE INSTALLED ON THE NORTH SIDE OF THE PROPOSED HIGHWAY. CONTRACTOR SHALL COORDINATE SEWER CONSTRUCTION WITH THESE UTILITIES.
4. CONTRACTOR SHALL LOCATE AND RECONNECT ALL SERVICE LINES TO THE NEW LINE.
5. CONTRACTOR SHALL COMPLY WITH NCDENR EROSION & SEDIMENTATION CONTROL MEASURES.
6. ALL MANHOLES REMOVED, ALL PIPE REMOVED, ANY TEMPORARY CONNECTIONS AND ANY REQUIRED BYPASS PUMPING SHALL BE CONSIDERED INCIDENTAL TO THE NEW SEWER LINE CONSTRUCTION.

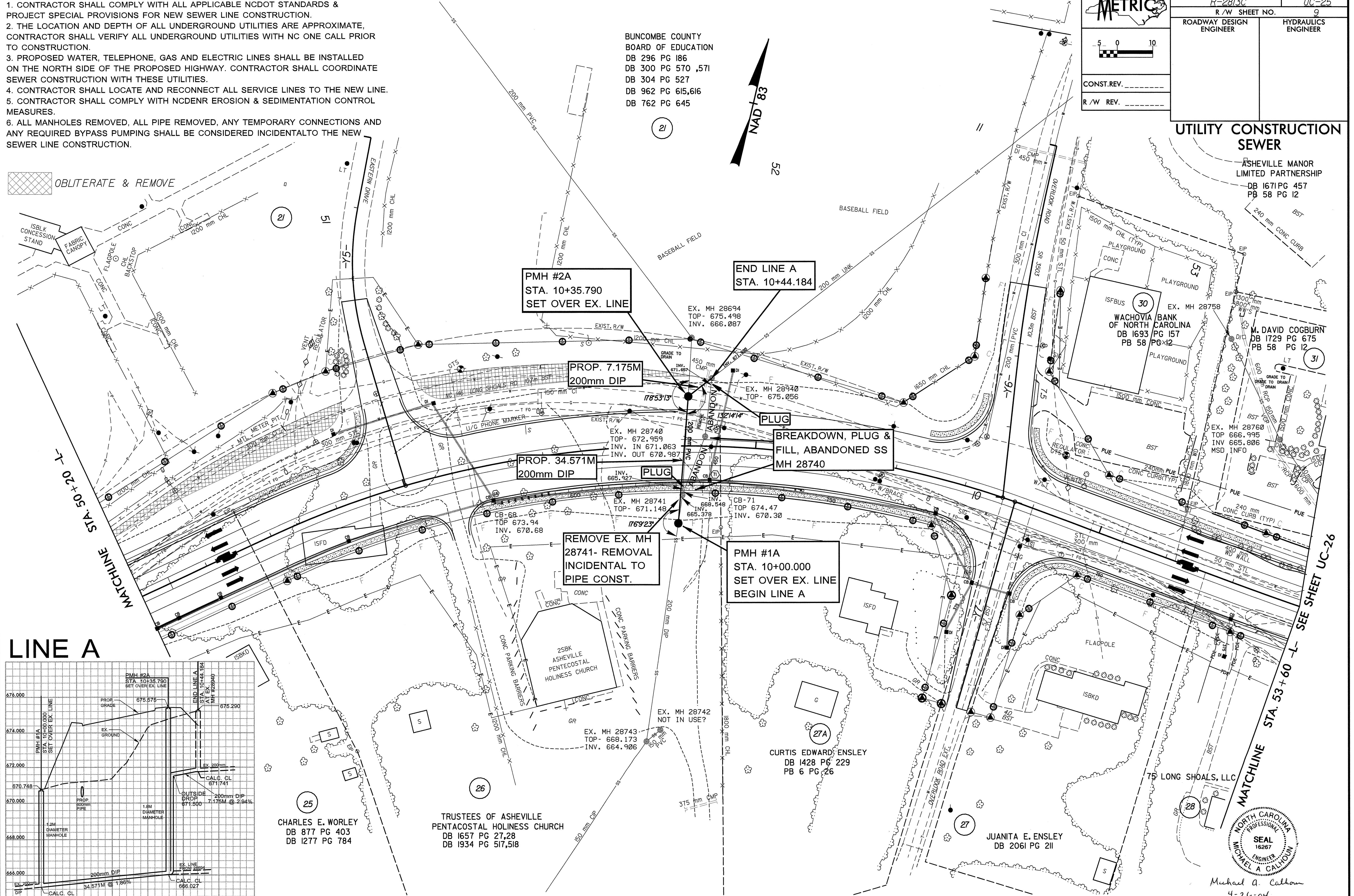
BUNCOMBE COUNTY
BOARD OF EDUCATION
DB 296 PG 186
DB 300 PG 570 ,571
DB 304 PG 527
DB 962 PG 615,616
DB 762 PG 645

UTILITY CONSTRUCTION
SEWER

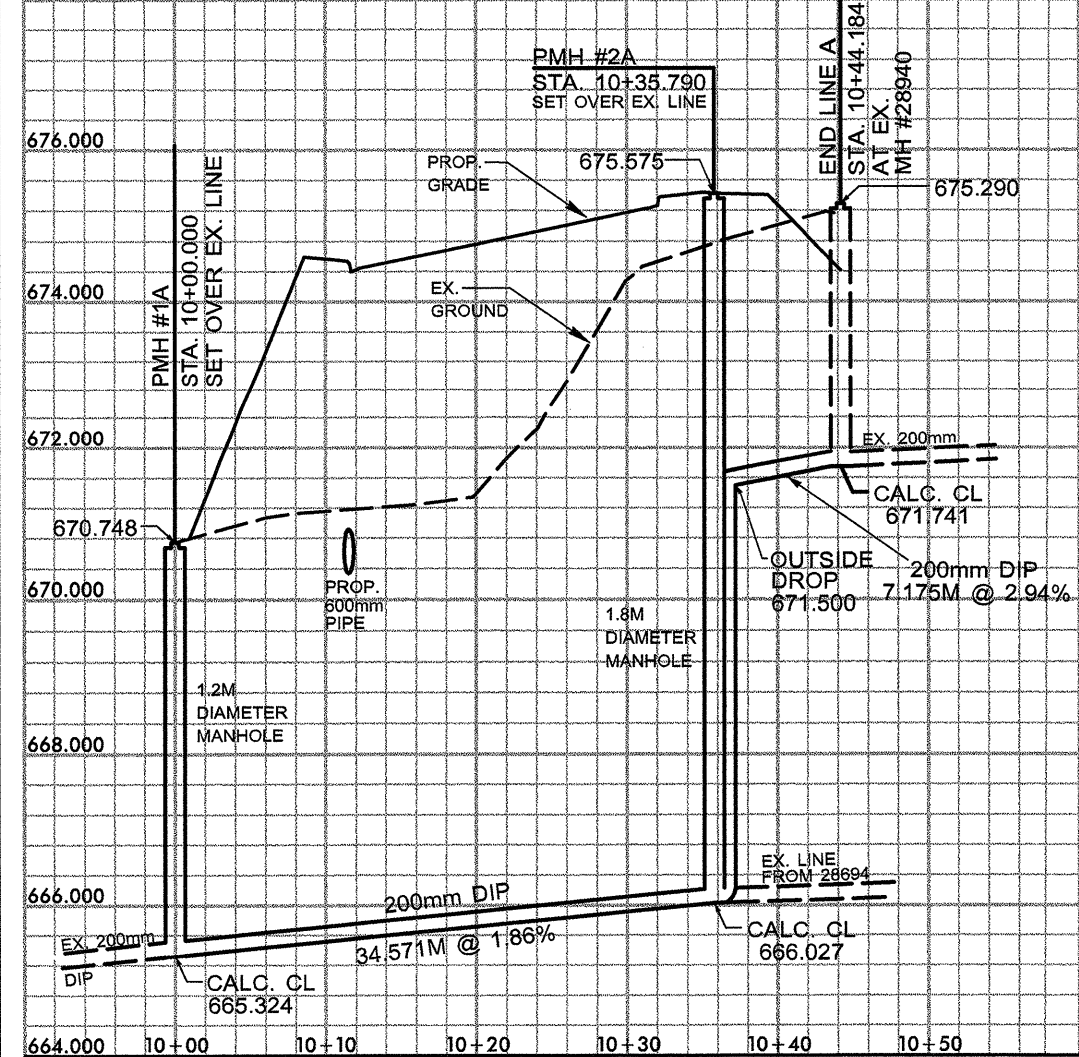
ASHEVILLE MANOR
LIMITED PARTNERSHIP
DB 1671 PG 457
PB 58 PG 12

OBLITERATE & REMOVE

CONTRACT #C200822



LINE A



CHARLES E. WORLEY
DB 877 PG 403
DB 1277 PG 784

TRUSTEES OF ASHEVILLE
PENTECOSTAL HOLINESS CHURCH
DB 1657 PG 27,28
DB 1934 PG 517,518

CURTIS EDWARDS ENSLEY
DB 1428 PG 229
PB 6 PG 26

JUANITA E. ENSLEY
DB 2061 PG 211



Michael A. Callahan
4-26-04

SEE SHEET UC-26