

NOTES:

- CONTRACTOR SHALL COMPLY WITH ALL APPLICABLE NCDOT STANDARDS & PROJECT SPECIAL PROVISIONS FOR NEW SEWER LINE CONSTRUCTION.
- THE LOCATION AND DEPTH OF ALL UNDERGROUND UTILITIES ARE APPROXIMATE, CONTRACTOR SHALL VERIFY ALL UNDERGROUND UTILITIES WITH NC ONE CALL PRIOR TO CONSTRUCTION.
- PROPOSED WATER, TELEPHONE, GAS AND ELECTRIC LINES SHALL BE INSTALLED ON THE NORTH SIDE OF THE PROPOSED HIGHWAY. CONTRACTOR SHALL COORDINATE SEWER CONSTRUCTION WITH THESE UTILITIES.
- CONTRACTOR SHALL LOCATE AND RECONNECT ALL SERVICE LINES TO THE NEW LINE.
- CONTRACTOR SHALL COMPLY WITH NCDENR EROSION & SEDIMENTATION CONTROL MEASURES.
- ALL MANHOLES REMOVED, ALL PIPE REMOVED, ANY TEMPORARY CONNECTIONS AND ANY REQUIRED BYPASS PUMPING SHALL BE CONSIDERED INCIDENTAL TO THE NEW SEWER LINE CONSTRUCTION.

EX. MH 38165
TOP UNKNOWN
INV 661.658
MH LOC. AND
INV CONVERTED
FROM NAD27 MSD INFO

CONTACT HYDRAULICS UNIT
DURING CONSTRUCTION WHEN
DRAINAGE STRUCTURE IS FOUND

CAROLINA POWER & LIGHT COMPANY
DB 840 PG 355
DB 859 PG 567

PMH #2F
STA. 10+43.022
REPLACE EX. MH #28681
END LINE F

CONTRACTOR SHALL FIELD
VERIFY THIS ANGLE
DUE TO ESTIMATED LOCATION
OF EX. MH #38165

PMH #6C
STA. 13+36.944 LINE C=
STA. 10+00.000 LINE F

PMH #7C
STA. 14+49.088

REMOVE EX. SS PIPE &
EX. SS MANHOLES
ALONG PROP. LINES C & F-
REMOVAL INCIDENTAL TO
PIPE CONSTRUCTION

PMH #8C
STA. 15+01.825

PMH #9C
STA. 15+64.638

NANCY MARSH WRIGHT
DB 582 PG 459
DB 584 PG 150
WILL: 84E PG 109I

KAREN RENEE HOLT
LIVING TRUST
DB 2823 PG 832

CAROLINA POWER & LIGHT COMPANY
DB 828 PG 229,225 DB 844 PG 25,855
DB 838 PG 185 DB 846 PG 185
DB 840 PG 37 DB 848 PG 1,397
DB 842 PG 63 DB 849 PG 236,409,53
DB 851 PG 395,396 DB 862 PG 64,478
DB 854 PG 305 DB 855 PG 18
DB 862 PG 25,26,71 DB 863 PG 45
DB 878 PG 402-405 PG 54 PG 14
DB 849 PG 283,284,287,288-296
DB 869 PG 407

METRIC

CONST. REV. _____
R/W REV. _____

PROJECT REFERENCE NO. R-2813C	SHEET NO. UC-27
R/W SHEET NO. II	HYDRAULICS ENGINEER
ROADWAY DESIGN ENGINEER	

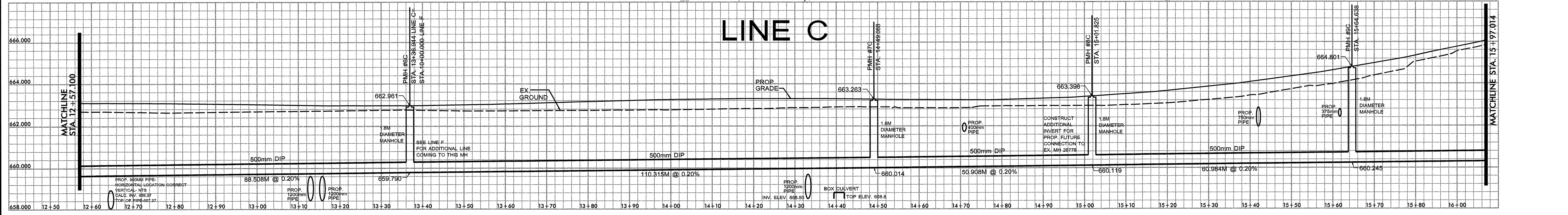
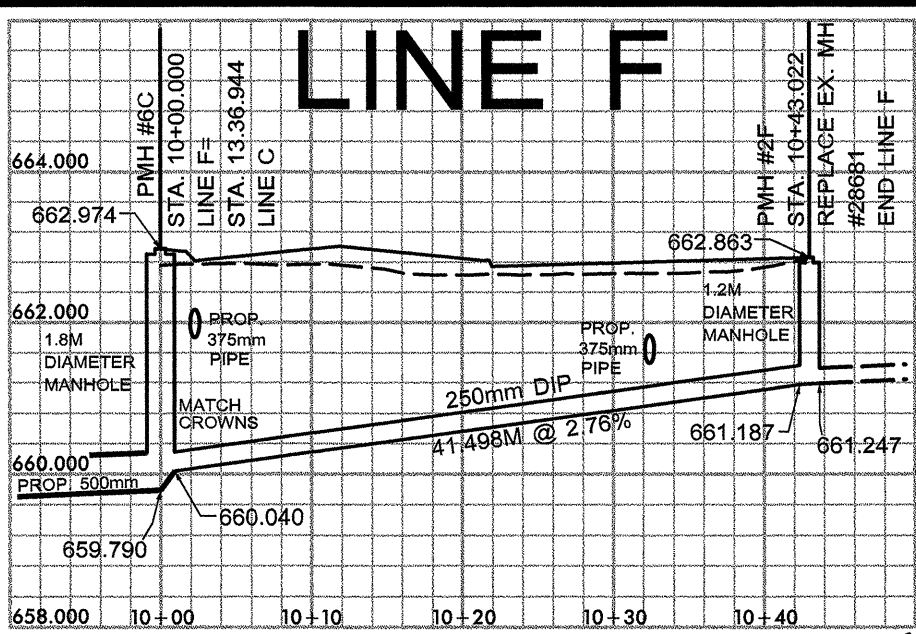
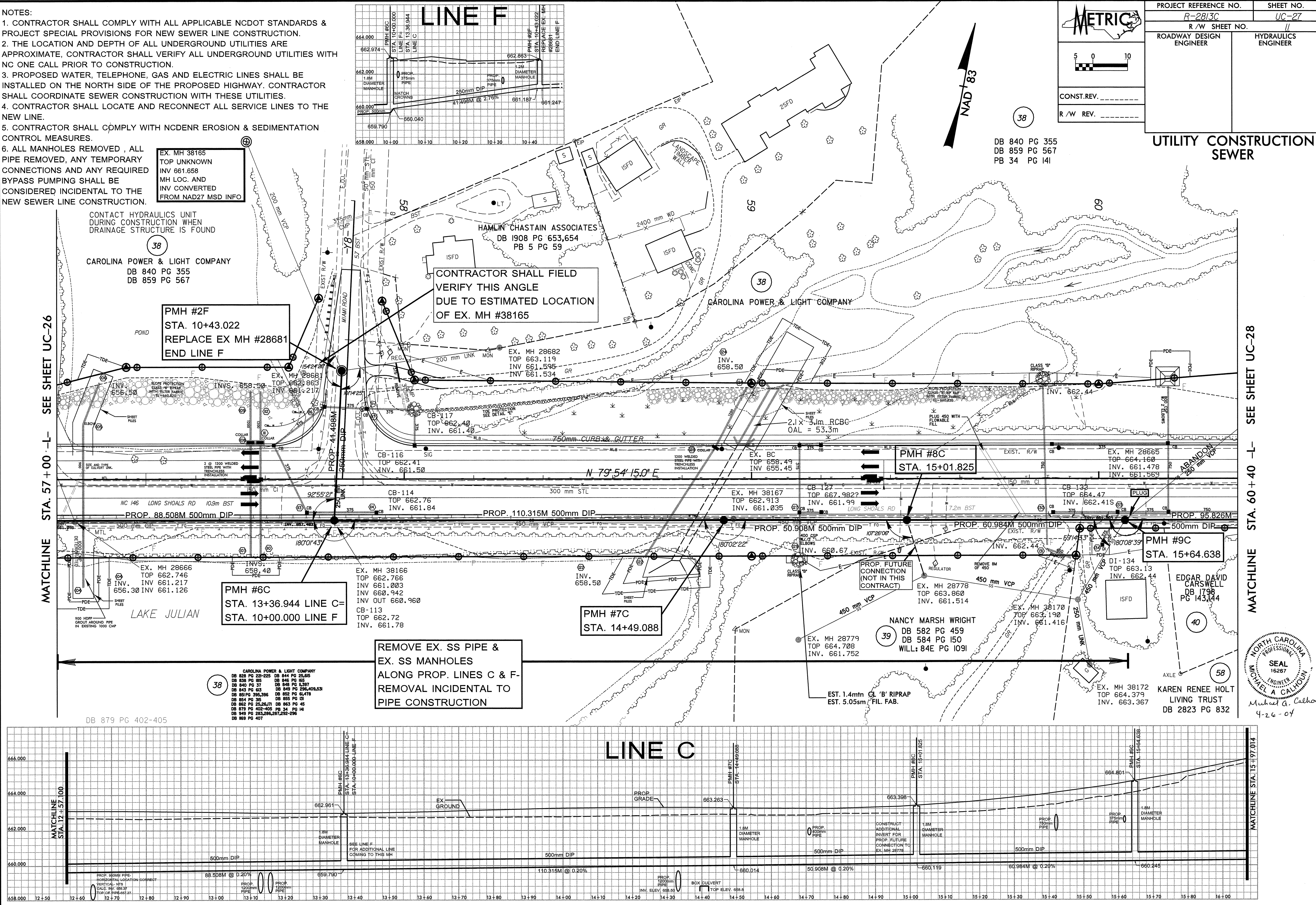
UTILITY CONSTRUCTION
SEWER

DB 840 PG 355
DB 859 PG 567
PB 34 PG 141

CONTRACT #C200822

MATCHLINE STA. 57+00 -L- SEE SHEET UC-26

MATCHLINE STA. 60+40 -L- SEE SHEET UC-28



NORTH CAROLINA PROFESSIONAL SEAL 16287
MICHAEL A. CALHOUN
ENGINEER
Michael A. Calhoun
4-26-04