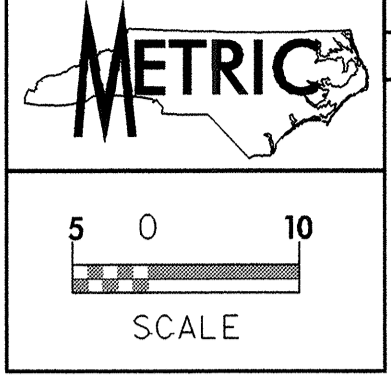


042592

Line's Class  $\frac{1}{8}$ " Poly 0.3m thick with Fiberglass  
4/4/02



PROJECT REFERENCE NO. **R-2813C**  
SHEET NO. **U0-6**  
**UTILITIES BY OTHERS**

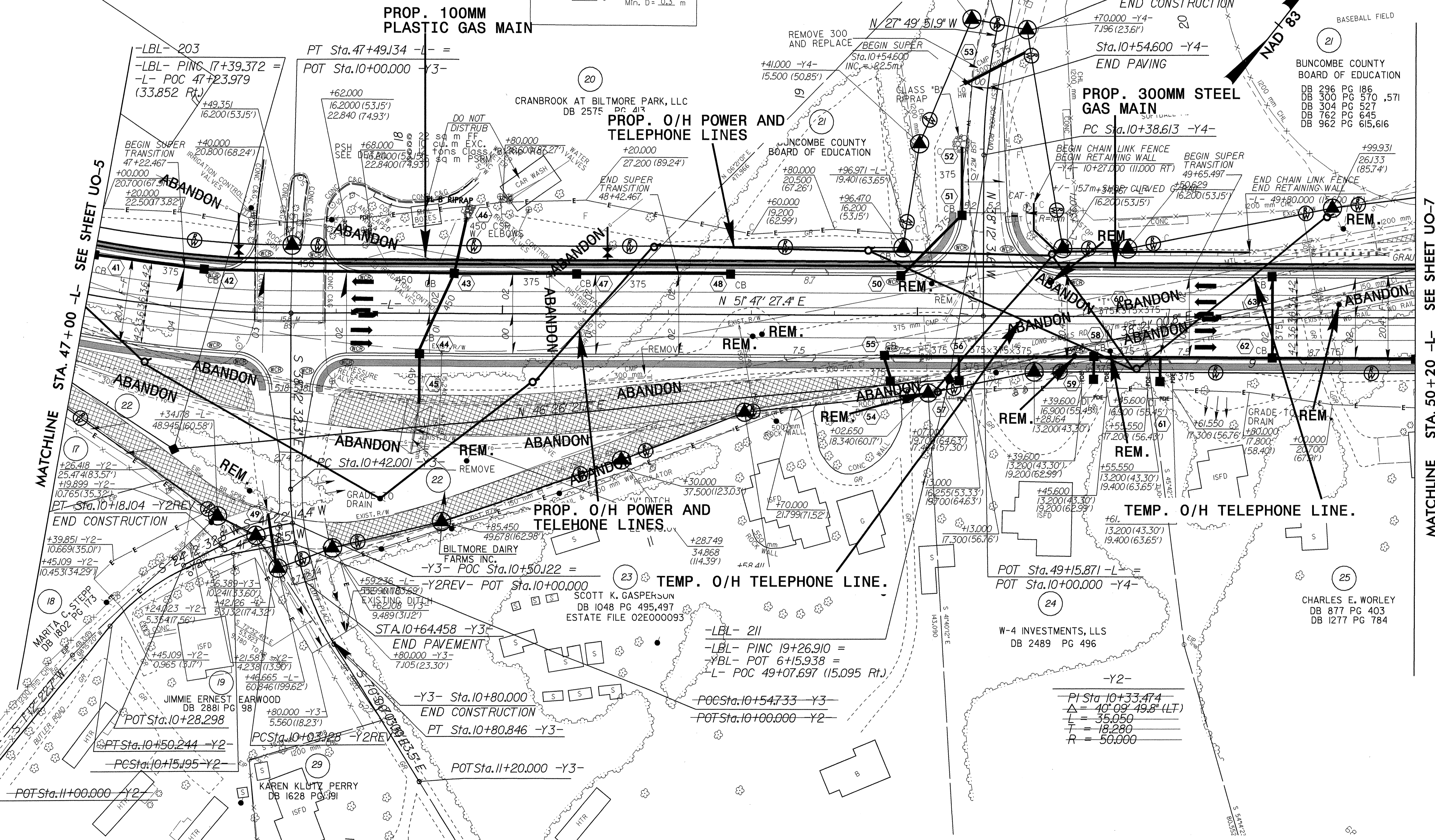
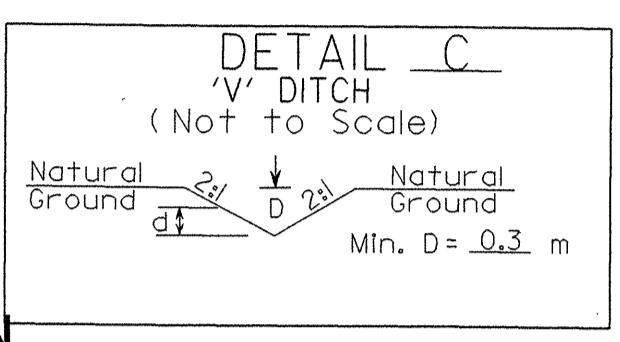
NOTE:  
ALL PROPOSED UTILITY WORK  
SHOWN ON THIS SHEET WILL  
BE DONE BY OTHERS

- L -  
PI Sta 46+75.753  
 $\Delta = 30^\circ 47' 41.0''$  (LT)  
L = 150.491  
T = 77.111  
R = 280.000  
SE = 0.04 m/m

- Y3 -  
PI Sta 10+61.938  
 $\Delta = 31^\circ 47' 41.2''$  (LT)  
L = 38.845  
T = 19.937  
R = 70.000  
SE = 0.04 m/m

- Y2REV -  
PI Sta 10+10.672  
 $\Delta = 17^\circ 09' 41.8''$  (LT)  
L = 14.976  
T = 7.545  
R = 50.000  
SE = 0.04 m/m

FOR PROFILE OF -L- SEE SHEETS NO. 17 & 18  
FOR PROFILES OF -Y2- & -Y3- SEE SHEET NO. 23  
FOR PROFILE OF -Y4- SEE SHEET NO. 24  
FOR INTERSECTION DETAILS OF -Y2- & -Y3- SEE SHEET NO. 2-F  
FOR INTERSECTION DETAIL OF -Y4- SEE SHEET NO. 2-G



-LBL- 203  
-LBL- PING 17+39.372 =  
-L- POC 47+23.979  
(33.852 Rt.)

PT Sta. 47+49.134 -L- =  
POT Sta. 10+00.000 -Y3-

**PROP. 100MM  
PLASTIC GAS MAIN**

**PROP. 0/H POWER AND  
TELEPHONE LINES**

**PROP. 300MM STEEL  
GAS MAIN**

**PROP. 0/H POWER AND  
TELEPHONE LINES**

**TEMP. 0/H TELEPHONE LINE.**

**TEMP. 0/H TELEPHONE LINE.**

-LBL- 211  
-LBL- PINC 19+26.910 =  
-YBL- POT 6+15.938 =  
-L- POC 49+07.697 (15.095 Rt.)

POT Sta. 49+15.871 -L- =  
POT Sta. 10+00.000 -Y4-

-Y2-  
PI Sta 10+33.474  
 $\Delta = 40^\circ 09' 49.8''$  (LT)  
L = 35.050  
T = 18.280  
R = 50.000

MATCHLINE STA. 47+00 -L- SEE SHEET UO-5

MATCHLINE STA. 50+20 -L- SEE SHEET UO-7

BUNCOMBE COUNTY  
BOARD OF EDUCATION  
DB 296 PG 186  
DB 300 PG 570, 571  
DB 304 PG 527  
DB 762 PG 645  
DB 962 PG 615, 616

CHARLES E. WORLEY  
DB 877 PG 403  
DB 1277 PG 784

W-4 INVESTMENTS, LLS  
DB 2489 PG 496

CRANBROOK AT BILTMORE PARK, LLC  
DB 2575

JUNCOMBE COUNTY  
BOARD OF EDUCATION

BILTMORE DAIRY  
FARMS INC.  
-Y3- POC Sta. 10+50.122 =

SCOTT K. GASPERSON  
DB 1048 PG 495, 497  
ESTATE FILE 02E000093

MARITA C. STEPP  
DB 1802 PG 173

JIMMIE ERNEST  
DB 2881 PG 98

KAREN KLUTZ PERRY  
DB 1628 PG 391

PL 27- APR-2004 08:53 R-2813C.U0-6.DWG.LDG.dgn