

042493  
R:\11\27-APR-2004\_08:53\PROJECTS\2813C-RD\2813C-RD\PSH9\_U07.dgn

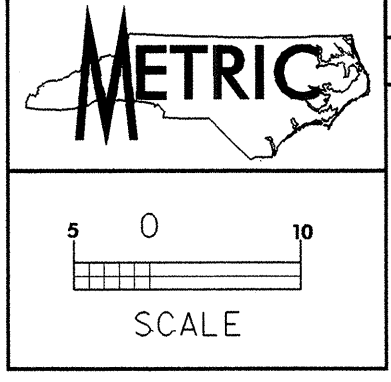
-Y6- SR 3503 OVERLOOK ROAD  
6980  
10100  
XXXX adt (2000)  
XXXX adt (2020)  
6040  
9000 ft  
940  
1100  
19780  
32900  
-L- NC 146  
LONG SHOALS ROAD  
14680  
25000  
POT Sta.11+00.000 -Y5-

-Y5-  
PI Sta. 10+61.038  
 $\Delta = 27^{\circ}05'50.6''$  (RT)  
L = 37.835  
T = 19.278  
R = 80.000

OBLITERATE & REMOVE

BUNCOMBE COUNTY  
BOARD OF EDUCATION  
DB 296 PG 186  
DB 300 PG 570 ,571  
DB 304 PG 527  
DB 962 PG 615,616  
DB 762 PG 645

FOR PROFILE OF -L- SEE SHEETS NO. 18 & 19  
FOR PROFILES OF -Y5- -Y6- & -Y7- SEE SHEET NO. 24  
FOR INTERSECTION DETAIL OF -Y5- SEE SHEET NO. 26  
FOR INTERSECTION DETAILS OF -Y6- & -Y7- SEE SHEET NO. 26



PROJECT REFERENCE NO. R-2813C SHEET NO. U0-7  
UTILITIES BY OTHERS

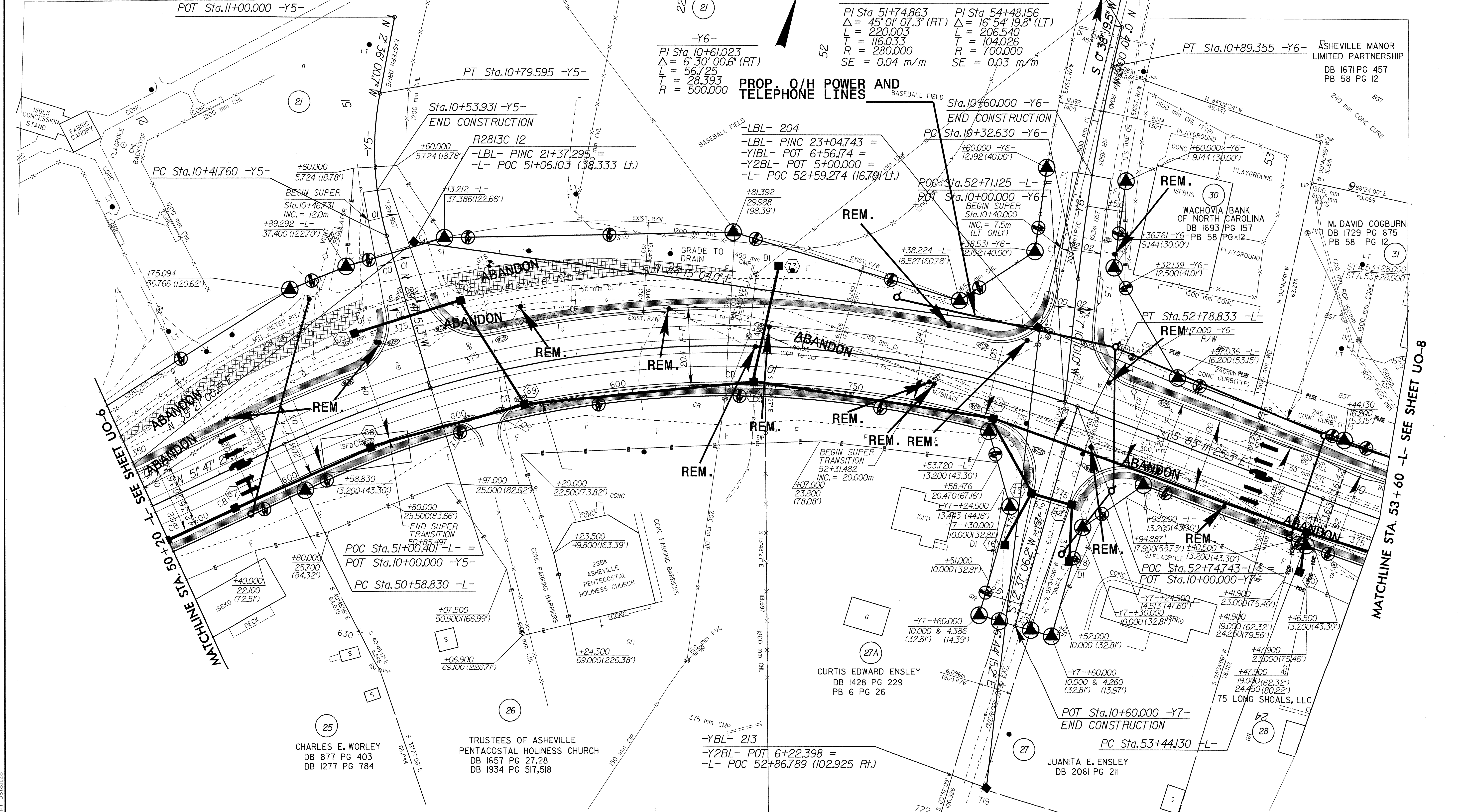
NOTE:  
ALL PROPOSED UTILITY WORK  
SHOWN ON THIS SHEET WILL  
BE DONE BY OTHERS

-Y6-  
PI Sta. 10+61.023  
 $\Delta = 6^{\circ}30'00.6''$  (RT)  
L = 56.725  
T = 28.393  
R = 500.000

-L-  
PI Sta. 51+74.863  
 $\Delta = 45^{\circ}01'07.3''$  (RT)  
L = 220.003  
T = 116.033  
R = 280.000  
SE = 0.04 m/m

-YBL- 214  
-YBL- POT 5+00.000 =  
-L- POC 52+55.620 (172.89' Lt.)  
POT Sta.11+00.000 -Y6-

PROP. O/H POWER AND  
TELEPHONE LINES



MATCHLINE STA. 50+20 -L- SEE SHEET U0-6

MATCHLINE STA. 53+60 -L- SEE SHEET U0-8

CHARLES E. WORLEY  
DB 877 PG 403  
DB 1277 PG 784

TRUSTEES OF ASHEVILLE  
PENTACOSTAL HOLINESS CHURCH  
DB 1657 PG 27,28  
DB 1934 PG 517,518

CURTIS EDWARD ENSLEY  
DB 1428 PG 229  
PB 6 PG 26

JUANITA E. ENSLEY  
DB 2061 PG 211

-YBL- 213  
-Y2BL- POT 6+22.398 =  
-L- POC 52+86.789 (102.925 Rt.)

042493