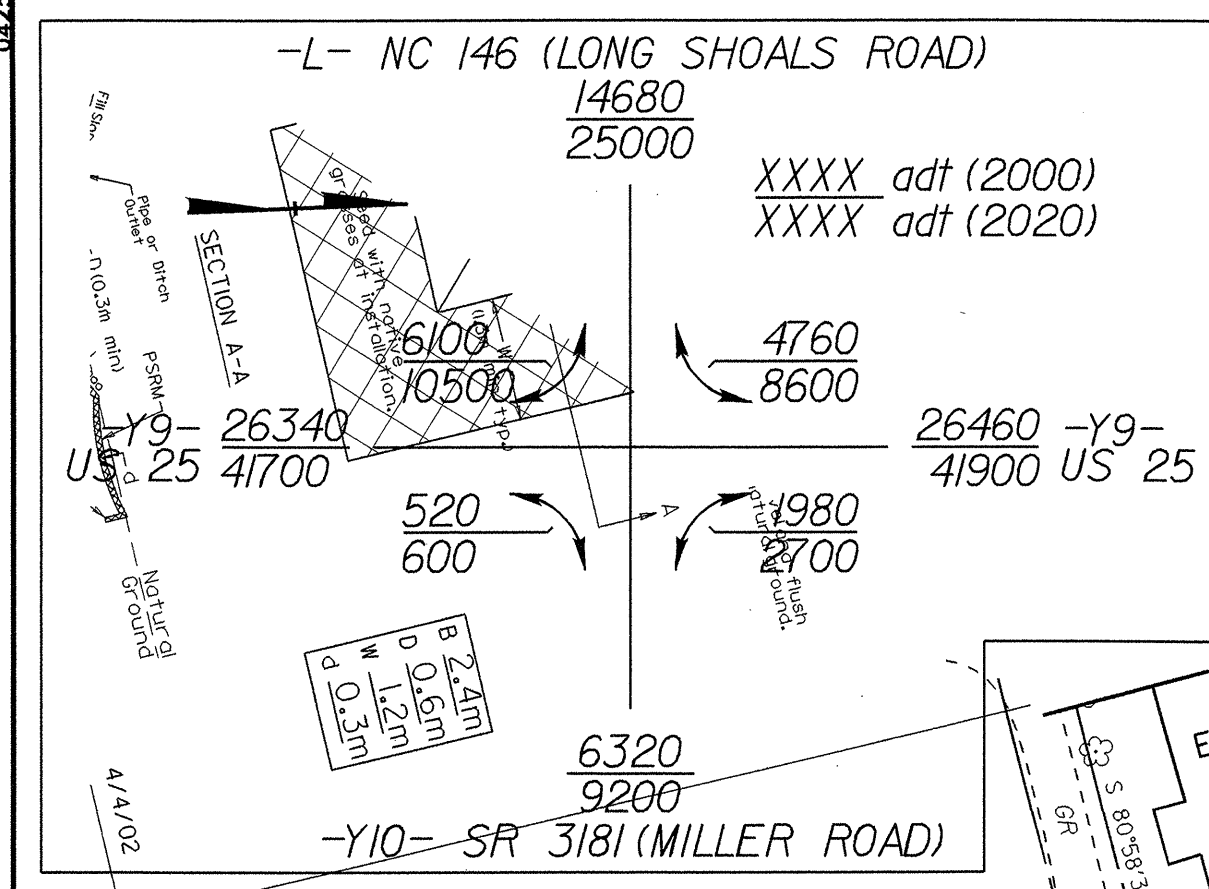
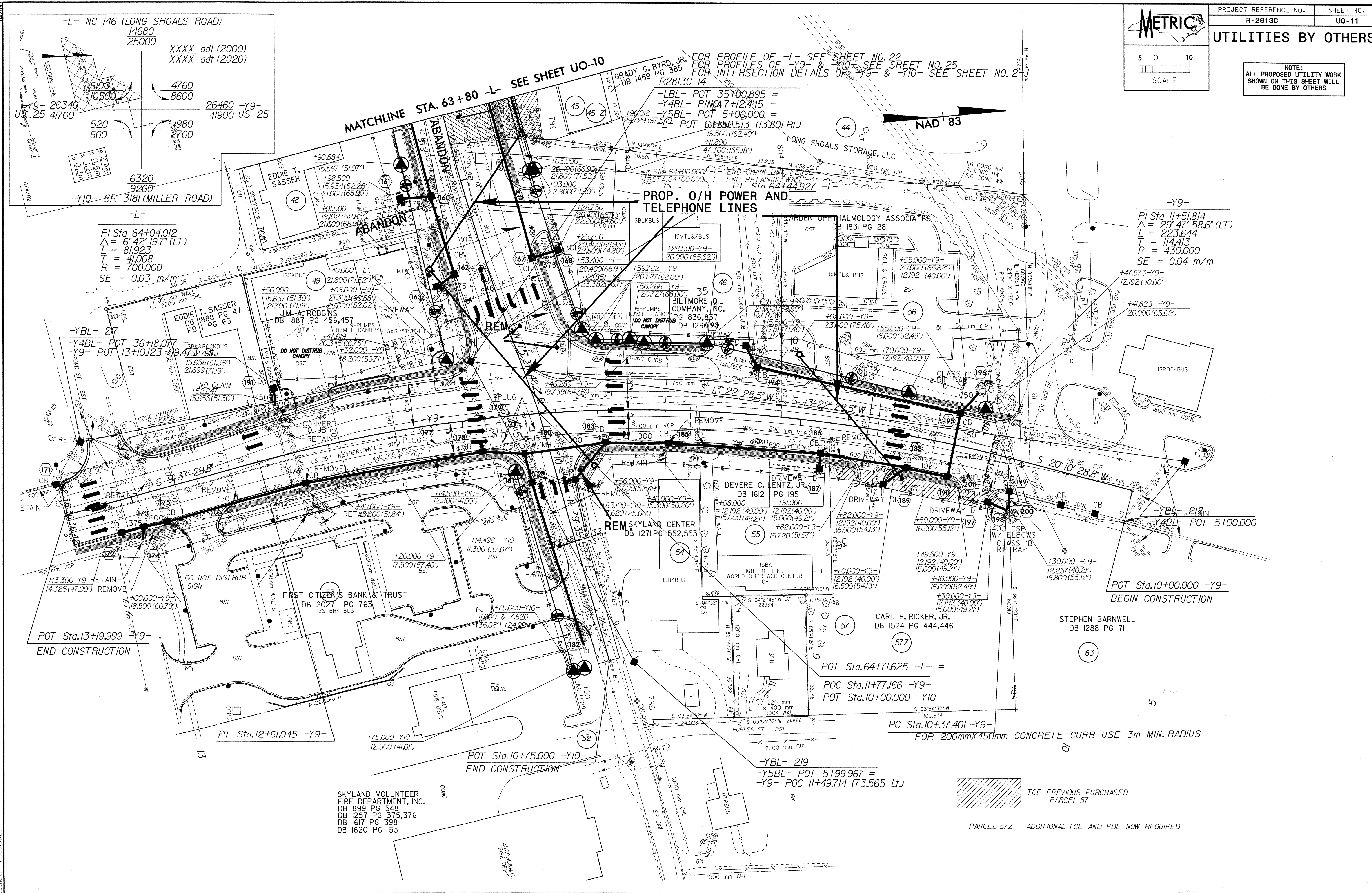


PROJECT REFERENCE NO.	SHEET NO.
R-2813C	UO-11

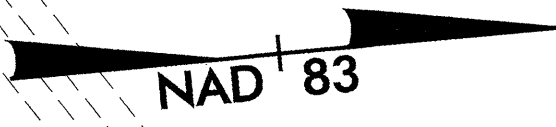
UTILITIES BY OTHERS

NOTE:
ALL PROPOSED UTILITY WORK SHOWN ON THIS SHEET WILL BE DONE BY OTHERS



MATCHLINE STA. 63+80 -L- SEE SHEET UO-10

FOR PROFILE OF -L- SEE SHEET NO. 22
FOR PROFILES OF -Y9- & -Y10- SEE SHEET NO. 25
FOR INTERSECTION DETAILS OF -Y9- & -Y10- SEE SHEET NO. 2



-Y9-
PI Sta. 11+51.814
 $\Delta = 29^{\circ} 47' 58.6''$ (LT)
L = 223.644
T = 114.413
R = 430.000
SE = 0.04 m/m

CARL H. RICKER, JR.
DB 1524 PG 444,446

STEPHEN BARNWELL
DB 1288 PG 711

POT Sta. 64+71.625 -L- =
POC Sta. 11+77.166 -Y9-
POT Sta. 10+00.000 -Y10-

PC Sta. 10+37.401 -Y9-
FOR 200mmx450mm CONCRETE CURB USE 3m MIN. RADIUS

-YBL- 219
-Y5BL- POT 5+99.967 =
-Y9- POC 11+49.714 (73,565 Lt.)

TCE PREVIOUS PURCHASED PARCEL 57
PARCEL 57Z - ADDITIONAL TCE AND PDE NOW REQUIRED

R:\N\1\27-APR-2004 08:54 R-2813C_UO-11.dwg