

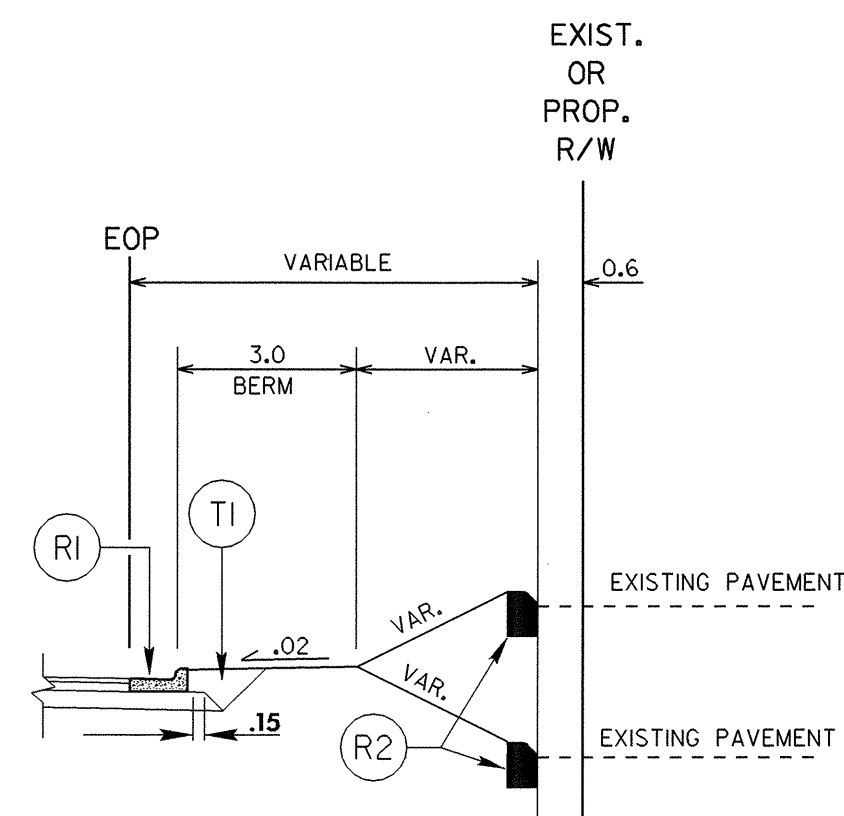
6/16/03



|                                  |                          |
|----------------------------------|--------------------------|
| PROJECT REFERENCE NO.<br>R-2813C | SHEET NO.<br>2           |
| ROADWAY DESIGN ENGINEER          | PAVEMENT DESIGN ENGINEER |
|                                  |                          |

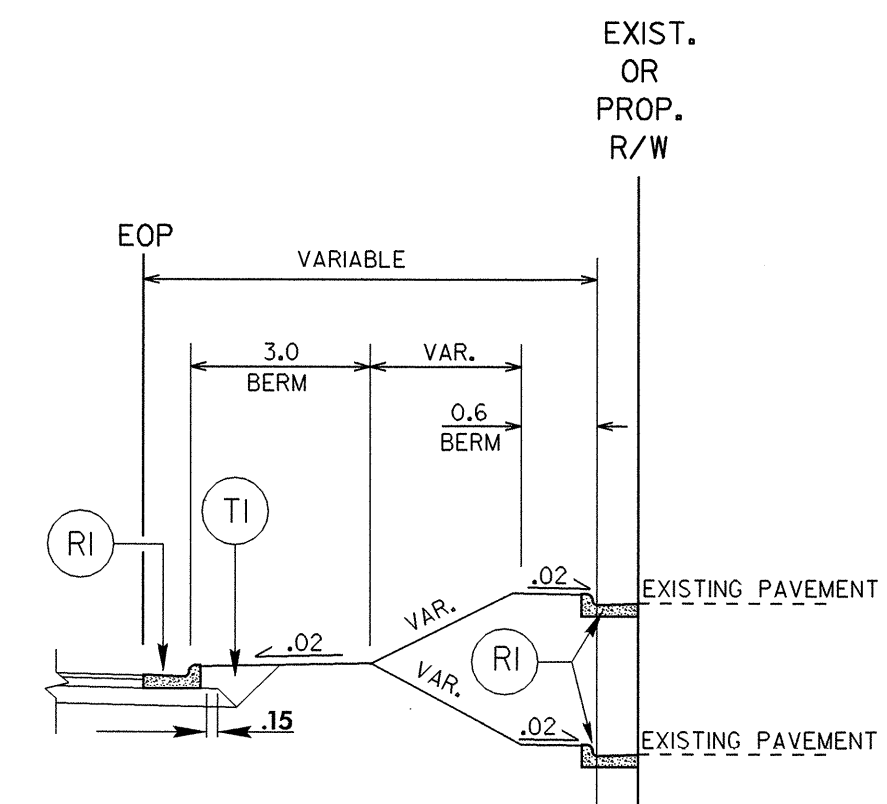
| FINAL PAVEMENT SCHEDULE |  |
|-------------------------|--|
| C1                      | PROP. APPROX. 40 mm ASPHALT CONC. SURFACE COURSE, TYPE S9.5B, AT AN AVERAGE RATE OF 96 kg PER SQ. METER  |
| C2                      | PROP. APPROX. 70 mm ASPHALT CONC. SURFACE COURSE, TYPE S9.5B, AT AN AVERAGE RATE OF 84 kg PER SQ. METER IN EACH OF TWO LAYERS.   |
| C3                      | PROP. VAR. DEPTH ASPHALT CONC. SURFACE COURSE, TYPE S9.5B, AT AN AVERAGE RATE OF 2.4 kg PER SQ. METER PER 1mm DEPTH TO BE PLACED IN LAYERS NOT LESS THAN 25 mm IN DEPTH OR GREATER THAN 50 mm IN DEPTH.    |
| D1                      | PROP. APPROX. 65 mm ASPHALT CONC. INTERMEDIATE COURSE, TYPE I19.0B, AT AN AVERAGE RATE OF 159 kg PER SQ. METER.  |
| D2                      | PROP. APPROX. 110 mm ASPHALT CONC. INTERMEDIATE COURSE, TYPE I19.0B, AT AN AVERAGE RATE OF 270 kg PER SQ. METER.   |
| D3                      | PROP. VAR. DEPTH ASPHALT INTERMEDIATE COURSE, TYPE I19.0B, AT AN AVERAGE RATE OF 2.45 kg PER SQ. METER PER 1mm DEPTH, TO BE PLACED IN LAYERS NOT LESS THAN 55 mm IN DEPTH OR GREATER THAN 110 mm IN DEPTH. |
| E1                      | PROP. APPROX. 110 mm ASPHALT CONC. BASE COURSE, TYPE B25.0B, AT AN AVERAGE RATE OF 270 kg PER SQ. METER.   |
| E2                      | PROP. VAR. DEPTH ASPHALT CONC. BASE COURSE, TYPE B25.0B, AT AN AVERAGE RATE OF 2.45 kg PER SQ. METER PER 1mm DEPTH, TO BE PLACED IN LAYERS NOT LESS THAN 75 mm IN DEPTH OR GREATER THAN 140 mm IN DEPTH.   |
| J1                      | PROP. 250 mm AGGREGATE BASE COURSE.  |
| R1                      | 750 mm CONCRETE CURB & GUTTER.   |
| R2                      | 200 mm x 450 mm CONCRETE CURB.   |
| R3                      | 125mm MONOLITHIC CONCRETE ISLAND   |
| S1                      | 100mm CONCRETE SIDEWALK  |
| T1                      | EARTH MATERIAL.  |
| U1                      | EXISTING PAVEMENT.   |
| W1                      | VARIABLE DEPTH ASPHALT PAVEMENT, (SEE WEDGING DETAIL).   |

NOTE: PAVEMENT EDGE SLOPES ARE 1:1 UNLESS SHOWN OTHERWISE.



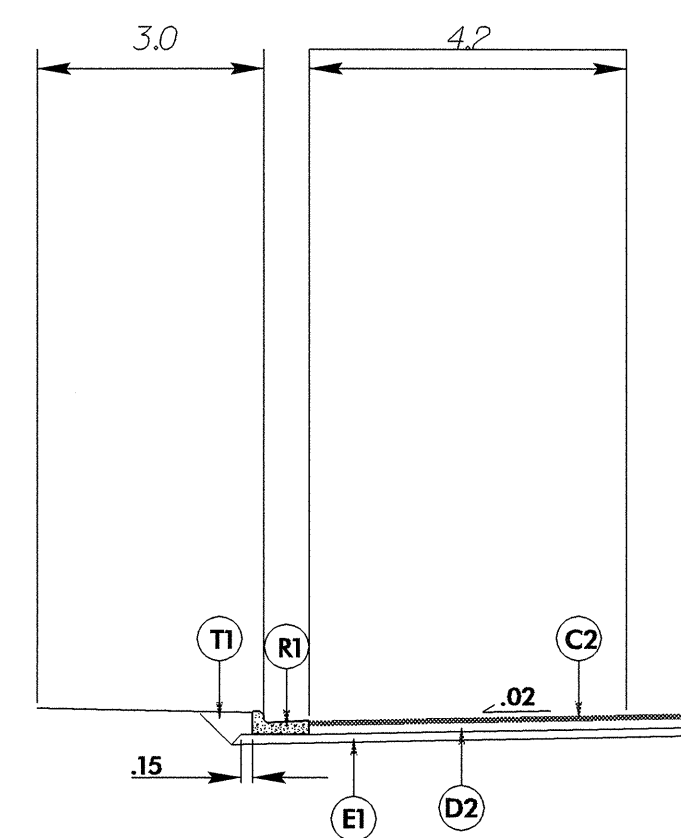
DETAIL OF 200mm X 450mm CONCRETE CURB FOR CHANNELIZATION

TO BE USED IN CONJUNCTION WITH TYPICAL SECTION NOS. 2 AND 3



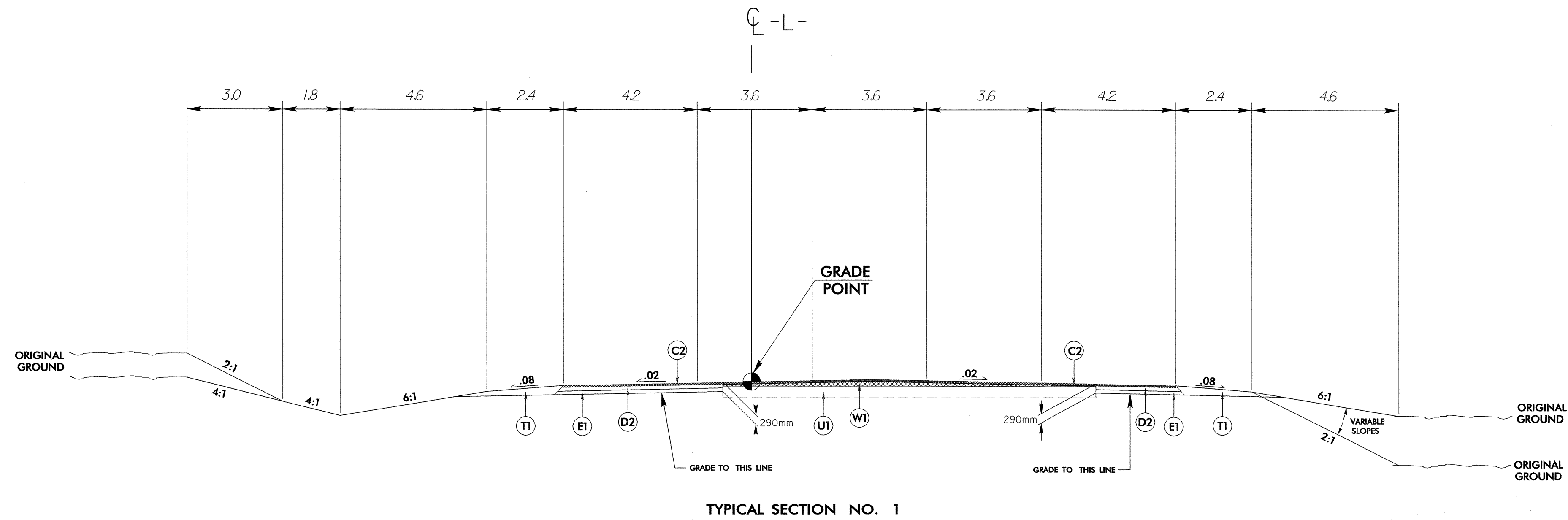
DETAIL OF 750mm CONCRETE CURB FOR CHANNELIZATION

TO BE USED IN CONJUNCTION WITH TYPICAL SECTION NO. 1 FROM -L- LT. STA. 36+99.893 TO STA. 37+46.893



DETAIL 'A'

USE DETAIL 'C' IN CONJUNCTION WITH TYPICAL SECTION NO. 1 FROM -L- LT. STA. 36+85.072 TO STA. 37+97.751



TYPICAL SECTION NO. 1

USE TYPICAL SECTION NO. 1  
-L- FROM STA. 36+00.000 TO STA. 37+93.383

01-APR-2004 14:52 C:\RDY-TYP.dgn wasm:th